

CONSUMER PRICE INDEX: JUNE 2006

ALL ITEMS INDEX

The Composite Consumer Price Index stood at 154.4 in June 2006. This represented a marginal decline of 0.2 percent below 154.7 observed in May 2006. The decrease in the index was caused mainly by decrease in the prices of some food items, kerosene, solid fuels and spare parts. The Urban All Items index rose by 1.2 percent while the corresponding Rural index fell by 0.9 percent over the period.

The year on year average Consumer Price level as at June 2006 rose by 8.5 percent. This was lower than that observed in May 2006. The corresponding urban and rural indices rose by 8.5 percent each over the period.

The percentage change in the average Composite CPI for the twelve-month period ending June 2006 over the average of the CPI for the previous twelve-month period was 15.5. This was lower than that recorded by making a similar comparison in May 2006.

FOOD INDEX

The Composite Food Index went up by 0.8 percent in June 2006. The rise in the index was caused by slight increase in the prices of yam tuber, gari, milk & milk products and sugar. The level of the composite food index was higher than the corresponding level a year ago by 6.2 percent. The average annual rate of rise of the index was 18.0 percent for the twelve-month period ending June 2006.

ALL ITEMS LESS FARM PRODUCE

The "All Items Less Farm Produce" index which excludes the prices of agricultural produce fell by 2.4 percent in June 2006 when compared with May 2006 figure. In the twelve-month to June 2006, the index rose by 13.6 percent while the average annual rate of rise of the index was 11.0 percent for the twelve-month period ending June 2006.

QUARTERLY CPI CHANGE

The All items index rose by 2.1 percent in the Second Quarter of 2006. This is less than 4.6 increase observed in the First Quarter of 2006.

Table 1 Composite Consumer Price Index (Base May 2003 = 100)

	All Items Index				All Items less Farm Produce				Food			
	Monthly change (%)	Month-on change (%)	Year-on change (%)	12-Month average change (%)	Monthly change (%)	Month-on change (%)	Year-on change (%)	12-Month average change (%)	Monthly change (%)	Month-on change (%)	Year-on change (%)	12-Month average change (%)
Weights	1000.0				409.5				637.6			
2003 Jan	97.3	2.2	10.6	12.3	97.7	1.0	16.1	13.4	98.0	1.6	7.5	11.6
Feb	95.9	-1.5	7.3	11.4	96.4	-1.3	14.2	14.3	96.1	-2.0	3.5	9.7
Mar	94.8	-1.1	5.9	10.5	97.6	1.3	15.4	15.0	93.5	-2.7	0.1	7.9
Apr	99.1	4.5	8.3	10.1	100.0	2.5	16.9	15.6	98.3	5.2	3.3	6.9
May	100.0	0.9	8.7	10.0	100.0	-0.0	17.6	16.3	100.0	1.7	3.3	6.3
June	105.2	5.2	14.0	10.1	106.2	6.2	22.2	16.6	104.1	4.1	6.2	6.0
Jul	109.5	4.1	12.9	10.0	121.2	14.1	41.2	19.0	104.3	0.2	0.1	4.7
Aug	108.1	-1.3	12.4	10.0	115.7	-4.5	30.9	20.5	102.4	-1.9	0.9	3.9
Sep	113.4	4.9	18.4	10.7	122.4	5.8	36.3	22.2	106.2	3.7	6.2	4.0
Oct	114.4	0.8	23.6	12.3	128.0	4.6	40.7	24.6	105.9	-0.2	13.2	5.0
Nov	115.9	1.4	21.3	13.0	129.4	1.0	35.7	26.0	107.4	1.4	12.4	5.4
Dec	117.9	1.7	23.8	14.0	130.3	0.8	34.8	27.2	111.3	3.7	15.4	6.0
2004 Jan	119.1	1.0	22.4	15.0	134.8	3.4	38.0	29.0	109.7	-1.5	11.9	6.3
Feb	119.7	0.5	24.8	16.5	136.1	0.9	41.1	31.2	110.0	0.3	14.5	7.2
Mar	116.1	-3.0	22.5	17.8	129.5	-4.8	32.6	32.6	108.0	-1.8	15.6	8.5
Apr	116.4	0.3	17.5	18.5	122.6	-5.4	22.5	32.9	112.5	4.1	14.4	9.4
May	119.8	2.9	19.8	19.4	123.4	0.7	23.4	33.2	118.1	4.9	18.1	10.6
June	120.0	0.2	14.1	19.4	121.8	-1.3	14.7	32.3	119.3	1.0	14.5	11.3
July	121.2	1.0	10.7	19.1	128.2	5.3	5.8	29.0	117.1	-1.8	12.2	12.4
Aug	122.2	0.8	13.0	19.1	126.2	-1.6	9.1	26.9	119.1	1.7	16.3	13.7
Sep	123.8	1.3	9.1	18.2	126.8	0.5	3.6	23.9	121.6	2.1	14.6	14.4
Oct	126.6	2.3	10.7	17.1	132.4	4.4	3.4	20.7	122.2	0.5	15.4	14.6
Nov	127.6	0.8	10.0	16.1	133.5	0.9	3.2	17.9	123.6	1.1	15.1	14.8
Dec	129.7	1.7	10.0	15.0	138.0	3.4	5.9	15.5	124.8	1.0	12.1	14.5
2005 Jan	130.8	0.9	9.8	14.0	137.4	-0.4	2.0	12.6	126.2	1.2	15.1	14.8
Feb	132.8	1.5	10.9	12.9	135.5	-1.4	-0.4	9.4	130.6	3.5	18.7	15.2
Mar	135.0	1.7	16.3	12.5	134.2	-0.9	3.6	7.3	135.1	3.4	25.0	16.0
Apr	137.3	1.7	17.9	12.6	139.5	3.9	13.8	6.8	135.3	0.2	20.3	16.5
May	139.9	1.9	16.8	12.5	143.9	3.2	16.6	6.5	136.6	1.0	15.7	16.3
June	142.3	1.7	18.6	12.9	141.5	-1.6	16.2	6.7	140.8	3.0	18.0	16.6
Jul	152.9	7.4	26.1	14.2	142.0	0.3	10.7	7.1	158.8	12.8	35.7	18.6
Aug	156.7	2.5	28.2	15.5	141.5	-0.4	12.1	7.4	164.9	3.8	38.5	20.5
Sep	153.9	-1.8	24.3	16.8	145.3	2.7	14.6	8.3	157.4	-4.5	29.5	21.8
Oct	150.2	-2.4	18.6	17.4	144.9	-0.3	9.4	8.8	152.2	-3.3	24.6	22.5
Nov	146.9	-2.2	15.1	17.8	142.6	-1.5	6.8	9.1	147.9	-2.8	19.7	22.9
Dec	144.7	-1.5	11.6	17.9	141.3	-0.9	2.4	8.8	144.1	-2.5	15.5	23.1
2006 Jan	144.9	0.1	10.7	17.9	143.3	1.4	4.3	9.0	144.8	0.5	14.7	22.9
Feb	147.2	1.6	10.8	17.8	150.5	5.0	11.1	10.0	144.3	-0.3	10.5	22.1
Mar	151.3	2.8	12.0	17.4	156.1	3.7	16.3	11.1	147.6	2.3	9.3	20.7
Apr	154.6	2.2	12.6	16.9	162.7	4.2	16.6	11.3	148.3	0.5	9.6	19.8
May	154.7	0.1	10.5	16.4	164.8	1.3	14.5	11.2	148.4	0.1	8.6	19.1
June	154.4	-0.2	8.5	15.5	160.8	-2.4	13.6	11.0	149.6	0.8	6.2	18.0

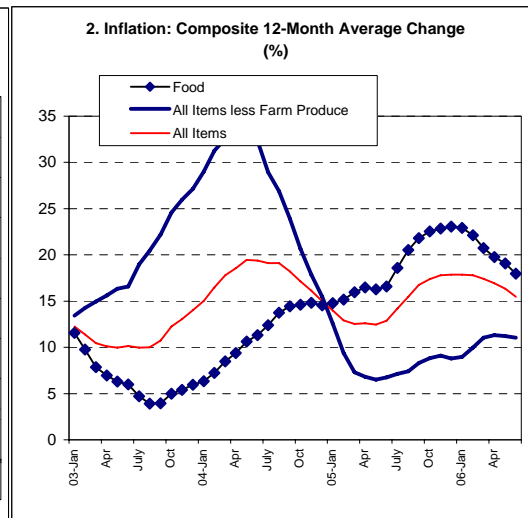
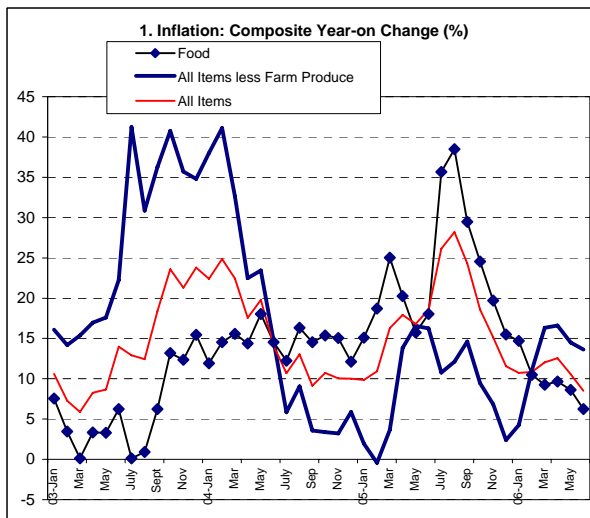


Table 2 Composite Consumer Price Index (Base May 2003 = 100)

	All Items	All Items less Farm Produce.	All Items less Farm Produce, and Energy	Food	Food & Non Alcoholic Bev.	Alcoholic Beverage, Tobacco and Kola	Clothing and Footwear	Housing Water, Electricity, Gas and Other Fuel	Furnishings & Household Equipment Maintenance.	Health.	Transport	Communication	Recreation & Culture.	Education	Restaurant & Hotels	Miscellaneous Goods & Services	Month-on (%)	Year-on (%)	12-month average (%)	
Weights	1000	409.53	335.89	637.6	644.1	20.6	32.1	181.0	38.2	13.6	42.4	1.1	8.9	2.1	12.9	3.0				
2003	Jan	97.3	97.7	96.9	98.0	98.0	93.8	100.8	98.3	105.3	118.1	77.6	101.2	89.6	132.8	99.0	98.9	2.2	10.6	12.3
	Feb	95.9	96.4	97.0	96.1	96.9	91.8	96.4	96.0	98.5	102.4	81.8	96.7	92.4	120.0	94.8	91.7	-1.5	7.3	11.4
	Mar	94.8	97.6	100.0	93.5	94.0	99.5	100.3	94.0	100.3	113.3	82.9	89.7	92.8	90.6	104.7	133.6	-1.1	5.9	10.5
	Apr	99.1	100.0	101.0	98.3	98.5	96.6	101.8	99.8	102.3	110.3	94.2	97.6	98.6	89.8	102.3	103.5	4.5	8.3	10.1
	May	100.0	100.0	100.0	100.0	100.0	100.0	100.0	100.0	100.0	100.0	100.0	100.0	100.0	100.0	100.0	100.0	0.9	8.7	10.0
	Jun	105.19	106.18	103.2	104.1	104.1	100.6	103.1	110.2	103.9	107.6	100.6	98.8	105.2	106.8	106.8	106.0	5.2	14.0	10.1
	Jul	109.51	121.2	106.9	104.3	104.3	104.1	104.1	128.7	107.6	126.5	102.1	102.8	105.2	103.6	119.9	101.5	4.1	12.9	10.0
	Aug	108.12	115.7	108.9	102.35	102.3	105.23	108.33	123.68	106.1	109.14	102.54	101.3	103.8	132.8	112.53	104.7	-1.3	12.4	10.0
	Sep	113.4	122.4	114.3	106.2	106.1	105.3	120.1	138.2	108.4	125.3	108.7	100.9	111.0	144.6	119.6	114.4	4.9	18.4	10.7
	Oct	114.4	128.0	116.2	105.9	106.2	107.9	128.8	138.7	111.4	122.0	115.7	104.8	145.9	118.0	112.7	107.2	0.8	23.6	12.3
	Nov	115.9	129.4	120.8	107.4	107.5	107.3	128.9	137.9	115.4	128.9	120.2	106.9	147.8	138.4	110.9	128.8	1.4	21.3	13.0
	Dec	117.9	130.3	125.1	111.3	111.5	106.1	133.5	137.1	113.1	134.9	115.4	104.3	148.6	147.0	112.7	142.4	1.7	23.8	14.0
2004	Jan	119.1	134.8	122.4	109.7	109.9	107.9	136.2	139.4	109.8	126.5	125.1	104.5	149.4	157.0	119.1	138.1	1.0	22.4	15.0
	Feb	119.7	136.06	122.62	110.02	110.26	109.32	138.53	141.96	109.32	151.27	120.76	104.6	145.3	141.86	118.54	146.4	0.5	24.8	16.5
	Mar	116.12	129.52	127.44	108.04	108.28	109.22	135.67	136.13	113.17	150.5	128.92	104.7	148	144.72	118.21	140	-3.0	22.5	17.8
	Apr	116.4	122.6	116.6	112.5	112.7	108.6	107.9	132.1	107.8	124.0	124.5	104.7	113.4	131.1	114.2	122.4	0.3	17.5	18.5
	May	119.8	123.4	117.5	118.1	118.2	111.5	108.4	127.4	109.0	119.2	117.4	117.6	114.4	133.4	112.0	122.3	2.9	19.8	19.4
	June	120.0	121.8	118.2	119.3	119.2	110.6	109.1	131.8	110.0	111.6	118.3	125.0	114.6	128.7	118.0	118.2	0.2	14.1	19.4
	July	121.2	128.2	118.4	117.1	117.2	109.1	112.1	138.4	116.7	117.1	117.0	180.3	111.2	121.7	117.1	126.1	1.0	10.7	19.1
	Aug	122.2	126.2	121.3	119.1	119.1	121.5	114.6	138.1	115.1	117.6	120.5	214.1	115.4	127.4	114.1	122.9	0.8	13.0	19.1
	Sep	123.8	126.8	121.8	121.6	121.7	113.7	113.7	142.9	113.5	114.0	115.5	233.1	114.9	133.8	119.1	125.6	1.3	9.1	18.2
	Oct	126.6	132.4	123.6	122.2	122.3	119.9	114.8	151.8	116.7	117.1	115.7	240.9	116.0	133.7	118.6	130.2	2.3	10.7	17.1
	Nov	127.6	133.5	126.4	123.6	123.6	115.5	118.2	156.1	115.4	117.2	117.5	241.0	114.7	142.6	120.8	127.8	0.8	10.0	16.1
	Dec	129.7	138.0	122.9	124.8	124.8	114.3	111.4	156.4	114.8	111.3	115.5	241.2	118.7	126.8	124.1	132.8	1.7	10.0	15.0
2005	Jan	130.8	137.4	123.9	126.2	126.2	117.8	115.8	159.0	115.6	118.7	117.0	232.0	119.3	140.2	128.6	130.2	0.9	9.8	14.0
	Feb	132.8	135.5	126.5	130.6	130.6	116.0	117.4	149.5	119.2	117.6	118.1	244.2	115.6	137.8	129.9	132.6	1.5	10.9	12.9
	Mar	135.0	134.2	128.3	135.1	134.9	118.5	117.7	153.1	120.6	118.4	113.8	237.4	117.1	134.7	132.2	130.1	1.7	16.3	12.5
	Apr	137.3	139.5	133.2	135.3	135.2	118.8	119.0	159.8	121.0	123.4	123.2	239.3	119.3	142.4	137.0	135.4	1.7	17.9	12.6
	May	139.9	143.9	135.4	136.6	136.5	122.5	120.1	163.9	127.0	126.8	124.2	239.3	121.9	147.9	135.6	131.8	1.9	16.8	12.5
	Jun	142.3	141.5	139.2	140.8	140.7	119.8	122.9	157.7	126.2	123.8	129.2	243.9	122.8	149.4	139.9	139.1	1.7	18.6	12.9
	Jul	152.9	142.0	138.4	158.8	158.4	122.8	123.2	159.8	130.9	127.2	132.4	243.7	116.4	142.5	133.1	135.0	7.4	26.1	14.2
	Aug	156.7	141.5	137.2	164.9	164.4	123.1	121.8	156.2	133.5	127.1	128.3	238.1	118.6	146.8	137.3	138.2	2.5	28.2	15.5
	Sep	153.9	145.3	139.7	157.4	157.2	126.5	116.6	160.2	127.2	129.3	125.7	222.8	122.8	150.9	134.4	142.8	-1.8	24.3	16.8
	Oct	150.2	144.9	140.1	152.2	152.0	126.1	120.3	162.1	129.7	127.8	133.7	214.6	120.4	146.5	140.2	136.0	-2.4	18.6	17.4
	Nov	146.9	142.6	136.1	147.9	147.7	126.4	120.8	156.9	127.5	133.5	129.7	225.7	117.6	141.7	139.0	145.5	-2.2	15.1	17.8
	Dec	144.7	141.3	134.1	144.1	143.8	128.9	113.0	158.1	129.7	138.5	129.9	222.0	119.6	152.1	122.0	144.1	-1.5	11.6	17.9
2006	Jan	144.9	143.3	138.4	144.8	144.6	132.7	115.4	157.4	128.7	137.4	141.2	194.6	123.3	155.6	122.0	146.1	0.1	10.7	17.9
	Feb	147.2	150.5	141.5	144.3	144.2	130.0	121.7	178.2	130.7	147.5	131.3	224.4	114.2	143.4	124.8	138.7	1.6	10.8	17.8
	Mar	151.3	156.1	143.5	147.6	147.5	129.7	119.3	186.3	129.7	148.1	134.4	224.9	115.4	143.1	131.0	127.4	2.8	12.0	17.4
	Apr	154.6	162.7	148.5	148.3	148.1	130.6	124.1	191.3	131.0	142.0	136.9	223.3	117.6	135.7	128.3	132.6	2.2	12.6	16.9
	May	154.7	164.8	153.7	148.4	148.4	132.7	120.9	187.8	130.8	129.2	140.7	217.2	117.0	140.9	126.7	134.4	0.1	10.5	16.4
	June	154.4	160.8	158.7	149.6	149.4	132.9	124.5	192.8	133.4	130.1	140.1	220.0	120.7	142.1	129.1	144.2	-0.2	8.5	15.5

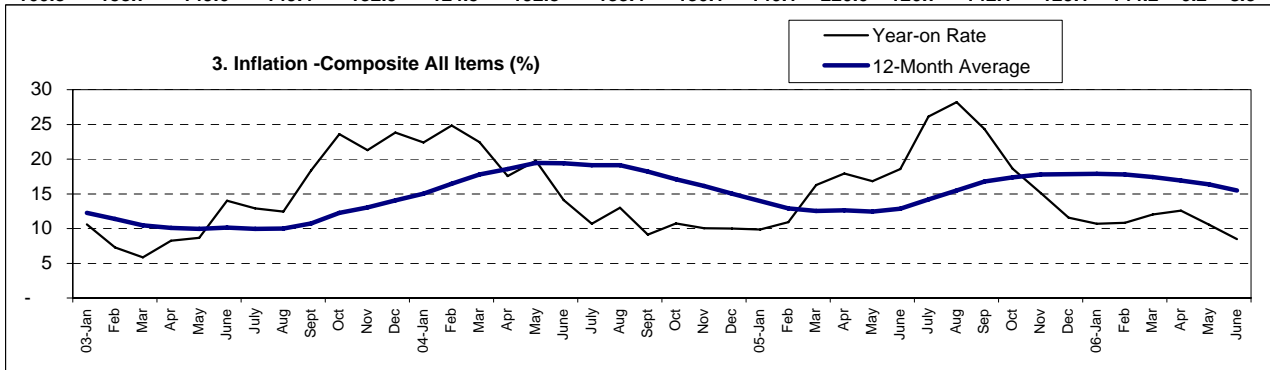


Table 2A Old Series Composite Consumer Price Index (Base September 1985 = 100)

		All Items	All Items less Farm Produce	Food	Drinks, Tobacco and Kola	Clothing and Footwear	Accommodation, Fuel and Lighting	Household Goods	Medical care and Health Exp.	Transport	Recreation, Ent., Educ. and Cult. Services	Other Services	Month-on (%)	Year-on (%)	12-month average (%)
<i>Weights</i>		1000.0	362.3	690.9	47.4	46.9	118.7	35.8	11.0	23.5	13.7	12.1			
2003	Jan	5046.2	5861.6	4630.3	5683.3	3384.0	7942.0	4490.4	4272.8	5181.8	6292.9	8053.6	2.2	10.6	12.3
	Feb	4971.0	5786.9	4538.4	6190.6	3237.2	7748.9	4201.2	3705.3	5461.5	6489.3	7466.3	-1.5	7.3	11.4
	Mar	4916.4	5859.5	4416.1	5924.5	3367.0	7594.8	4277.7	4100.9	5530.6	6517.5	10874.6	-1.1	5.9	10.5
	Apr	5136.3	6003.4	4646.4	5807.1	3417.3	8055.6	4362.0	3989.9	6285.8	6926.4	8421.6	4.5	8.3	10.1
	May	5184.9	6000.9	4724.6	5856.5	3356.7	8075.5	4263.3	3618.9	6673.5	7023.4	8140.0	0.9	8.7	10.0
	Jun	5454.5	6372.9	4918.3	5891.6	3460.8	8899.2	4429.5	3893.9	6713.5	7388.6	8628.4	5.2	14.0	10.1
	Jul	5677.4	7273.1	4927.7	6096.6	3494.3	10393.2	4587.3	4577.9	6813.6	7388.6	8262.1	4.1	12.9	10.0
	Aug	5604.8	6943.0	4835.6	6162.8	3636.3	9987.8	4523.3	3948.2	6840.3	7288.9	8522.6	-1.3	12.4	10.0
	Sep	5879.6	7345.1	5017.5	6166.9	4031.4	11160.3	4621.4	4534.5	7254.1	7796.0	9312.2	4.9	18.4	10.7
	Oct	5926.3	7681.1	5004.7	6366.0	4322.8	11203.1	4748.9	4415.1	7721.2	10244.3	8726.1	0.8	23.5	12.2
	Nov	6009.2	7765.1	5074.2	6284.0	4326.8	11136.1	4919.8	4664.8	8021.5	10380.6	10484.4	1.4	21.2	13.0
	Dec	6112.9	7819.2	5258.4	6213.7	4481.2	11071.5	4821.8	4881.9	7701.2	10436.8	11591.4	1.7	23.8	14.0
2004	Jan	6175.2	8089.2	5182.8	6319.2	4571.8	11257.2	4681.1	4577.9	8348.5	10493.0	11241.4	1.0	22.4	15.0
	Feb	6206.3	8167.2	5198.0	6402.3	4649.0	11467.2	4659.8	5475.4	8061.6	10205.0	11241.4	0.5	24.8	16.5
	Mar	6020.6	7771.1	5104.4	6396.5	4555.0	10990.7	4826.0	5446.5	8602.1	10396.8	11396.0	-3.0	22.5	17.8
	Apr	6037.2	7357.1	5315.1	6360.2	3621.9	10667.7	4595.8	4487.4	8308.5	7964.5	9963.4	0.3	17.5	18.5
	May	6211.5	7405.1	5579.7	6530.0	3638.7	10288.2	4647.0	4313.7	7834.7	8034.8	9955.3	2.9	19.8	19.4
	June	6221.8	7309.1	5636.4	6477.3	3662.2	10643.5	4689.6	4038.7	7894.7	8048.8	9621.5	0.2	14.1	19.4
	July	6284.0	7693.1	5532.5	6389.4	3762.9	11176.5	4975.2	4237.7	7454.3	7810.0	10264.6	1.0	10.7	19.1
	Aug	6335.9	7573.1	5627.0	7115.6	3846.8	11152.3	4907.0	4255.8	8041.5	8105.0	10004.1	0.8	13.0	19.1
	Sep	6418.8	7609.1	5745.1	6658.8	3816.6	11539.9	4838.8	4125.6	7707.9	8069.9	10223.9	1.3	9.2	18.2
	Oct	6564.0	7945.2	5773.4	7021.9	3853.5	12258.6	4975.2	4237.7	7721.2	8147.2	10598.3	2.3	10.8	17.1
	Nov	6615.9	8011.2	5837.2	6764.8	3967.6	12605.8	4919.8	4241.4	7841.3	8053.0	10403.0	0.8	10.1	16.2
	Dec	6729.9	8281.2	5895.3	6691.6	3739.4	12630.1	4894.2	4027.8	7707.9	8334.7	10810.0	1.7	10.1	15.0
2005	Jan	6783.9	8245.2	5962.4	6904.8	3893.8	12832.0	4928.4	4295.6	7794.6	8378.9	10590.2	0.8	9.9	14.0
	Feb	6885.0	8130.0	6169.8	6790.6	3941.8	12075.3	5079.7	4255.1	7878.0	8119.8	10793.7	1.5	10.9	12.9
	Mar	6999.5	8053.2	6382.9	6940.0	3950.8	12363.6	5141.5	4284.8	7594.4	8224.4	10590.2	1.7	16.3	12.5
	Apr	7118.8	8371.2	6392.3	6957.5	3994.5	12904.6	5158.6	4465.7	8221.7	8378.9	11021.6	1.7	17.9	12.6
	May	7253.6	8635.3	6453.7	7174.2	4031.4	13235.7	5414.4	4588.8	8288.4	8561.5	10728.6	1.9	16.8	12.5
	Jun	7378.0	8491.3	6652.2	7016.1	4125.4	12735.0	5380.3	4480.2	8622.1	8624.7	11322.8	1.7	18.6	12.9
	Jul	7927.6	8521.3	7502.6	7191.8	4135.5	12904.6	5580.6	4603.3	8835.7	8175.2	10989.0	7.4	26.2	14.2
	Aug	8124.7	8491.3	7790.8	7209.4	4088.5	12613.9	5691.5	4599.6	8555.4	8329.8	11249.5	2.5	28.2	15.5
	Sep	7979.5	8719.3	7436.5	7408.5	3913.9	12936.9	5422.9	4679.3	8388.6	8624.7	11624.0	-1.8	24.3	16.8
	Oct	7787.6	8695.3	7190.8	7385.0	4038.1	13090.4	5529.5	4625.0	8922.4	8456.2	11070.4	-2.4	18.6	17.4
	Nov	7616.5	8557.3	6987.6	7402.6	4054.9	12670.4	5435.7	4831.2	8655.5	8259.5	11843.7	-2.2	15.1	17.8
	Dec	7502.5	8479.3	6808.1	7549.0	3793.1	12767.3	5529.5	5012.2	8668.8	8400.0	11729.8	-1.5	11.5	17.9
2006	Jan	7512.8	8599.3	6841.2	7771.6	3873.6	12710.8	5486.8	4972.4	9422.9	8659.9	11892.6	0.1	10.7	17.9
	Feb	7631.1	9061.3	6817.5	7613.5	4085.1	14390.5	5572.1	5337.9	8762.3	8020.7	11290.2	1.6	10.8	17.8
	Mar	7842.6	9369.8	6972.0	7595.9	4005.9	15047.1	5530.8	5358.5	8967.8	8105.0	10370.4	2.8	12.0	17.4
	Apr	8015.8	9763.4	7006.5	7648.6	4165.7	15448.4	5586.2	5138.9	9136.0	8259.5	10793.7	2.2	12.6	16.9
	May	8021.0	9889.5	7011.2	7771.6	4058.3	15165.8	5576.4	4675.6	9389.6	8217.4	10940.2	0.1	10.6	16.4
	Jun	8005.4	9649.4	7067.9	7783.3	4179.1	15569.5	5687.2	4708.2	9349.5	8477.3	11737.9	-0.2	8.5	15.5

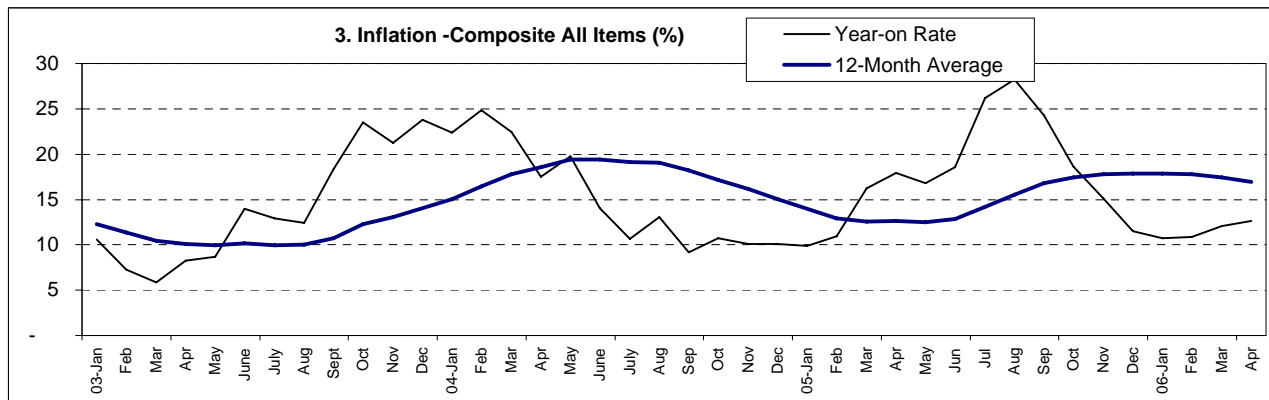


Table 3 Urban Consumer Price Index (Base May 2003 = 100)

	All Items	All Items less Farm Produce	All Items less Farm Produce and Energy	Food	Food & Non Alcoholic Bev.	Alcoholic Beverage, Tobacco and Kola	Clothing and Footwear	Housing Water, Electricity, Gas and Other Fuel	Furnishings & Household Equipment Maintenance	Health	Transport	Communication	Recreation & Culture	Education	Restaurant & Hotels	Miscellaneous Goods & Services	Month-on (%)	Year-on (%)	12-month average (%)	
Weights	1000	425.6	335.9	626.5	634.5	13.1	36.2	172.8	44.6	8.7	50.3	1.5	13.3	3.3	18.8	2.9				
2003	Jan	96.5	94.6	96.5	100.5	100.4	106.8	117.1	91.8	123.4	133.9	78.5	100.7	80.0	81.5	81.3	94.0	2.0	9.2	11.5
	Feb	95.0	91.4	91.9	99.4	99.4	99.1	104.6	92.1	95.3	89.7	80.0	96.7	86.7	52.6	79.7	81.3	-1.6	7.3	10.8
	Mar	94.1	90.5	92.1	98.0	98.2	101.2	96.9	88.0	95.0	122.7	75.9	84.9	87.9	111.4	97.1	117.4	-0.9	5.0	10.0
	Apr	98.3	96.2	98.6	100.7	100.2	97.2	104.7	93.0	102.0	107.4	89.2	98.8	98.5	91.5	85.5	119.0	4.4	9.0	9.8
	May	100.0	100.0	100.0	100.0	100.0	100.0	100.0	100.0	100.0	100.0	100.0	100.0	100.0	100.0	100.0	100.0	1.7	10.0	9.7
	Jun	106.2	106.4	106.1	107.6	105.9	99.9	99.1	113.1	101.8	97.8	100.2	98.2	102.5	108.0	112.2	103.1	6.2	14.8	9.9
	Jul	113.2	117.1	109.3	107.7	107.6	107.3	107.1	132.8	105.6	131.4	103.8	98.2	100.2	115.5	105.1	101.0	6.6	19.1	10.2
	Aug	112.5	118.3	112.3	105.8	105.8	103.8	111.2	126.5	108.9	101.7	101.9	98.6	100.3	111.6	103.0	100.0	-0.6	22.8	11.2
	Sep	117.2	126.8	119.7	106.8	106.8	107.5	119.5	143.2	106.3	108.9	106.5	97.6	106.1	119.2	109.1	101.9	4.2	22.5	12.5
	Oct	116.2	126.4	116.5	108.2	108.1	109.2	147.2	139.7	120.3	110.9	115.5	101.1	99.4	118.5	113.5	103.1	-0.9	25.0	14.0
	Nov	119.8	129.3	118.2	112.2	112.1	110.7	143.7	142.3	127.3	110.9	125.2	105.4	102.2	139.0	101.0	114.3	3.1	27.9	15.5
	Dec	117.5	130.3	125.0	110.1	110.0	107.1	148.4	139.0	122.1	117.0	117.7	99.6	99.9	161.3	102.2	122.5	-1.9	24.2	16.6
2004	Jan	119.2	130.3	122.6	111.7	111.6	107.8	158.9	137.4	114.8	115.5	130.4	100.5	100.9	163.1	116.9	119.0	1.5	23.5	17.7
	Feb	120.0	130.9	123.0	112.5	112.4	109.1	165.0	136.9	117.4	174.8	125.4	100.4	99.3	170.9	111.9	119.6	0.7	26.4	19.3
	Mar	123.4	135.0	125.8	115.6	115.4	109.8	161.2	142.1	118.2	175.4	136.4	100.5	100.4	166.8	108.8	121.1	2.8	31.1	21.4
	Apr	121.8	127.7	118.7	118.1	117.9	111.1	104.9	137.8	112.1	116.9	129.1	100.6	106.1	154.7	126.4	118.8	-1.3	23.9	22.6
	May	122.8	122.5	116.4	124.0	123.7	113.4	105.7	126.9	116.4	110.8	121.4	108.1	110.2	166.5	103.9	121.6	0.8	22.8	23.7
	June	123.9	128.3	117.6	121.4	121.2	112.6	109.6	138.8	115.5	106.9	123.0	115.8	111.1	166.06	121	122.17	0.9	16.7	23.7
	July	123.8	128.0	118.4	120.2	120.0	107.8	113.1	144.8	120.4	109.6	111.3	153.4	107.5	154.29	116.3	125.78	-0.1	9.3	22.7
	Aug	126.25	128.5	119.42	124.12	123.9	123.87	114.4	142.2	119.3	115.59	113.7	236.0	117.3	157.0	114.6	131.34	2.0	12.2	21.7
	Sep	127.5	132.0	121.2	123.5	123.4	116.9	111.9	151.5	119.8	115.7	110.2	247.3	111.5	152.7	125.1	134.3	1.0	8.8	20.4
	Oct	130.3	136.7	123.5	125.3	125.1	118.5	114.2	159.9	118.3	115.4	111.0	245.4	110.1	157.0	126.8	133.9	2.2	12.2	19.3
	Nov	133.5	142.4	126.4	127.0	126.8	118.7	120.1	168.5	123.1	114.1	112.8	244.9	108.6	163.5	127.7	131.3	2.5	11.5	17.9
	Dec	131.3	137.8	122.4	126.5	126.3	115.5	113.0	159.1	115.5	112.6	115.0	245.5	120.7	162.8	132.7	141.1	-1.7	11.8	16.9
2005	Jan	135.9	142.0	125.7	131.4	131.2	117.3	119.2	164.9	121.4	116.9	114.8	245.5	112.9	155.9	140.5	138.8	3.5	14.0	16.1
	Feb	137.3	136.7	126.5	137.0	136.7	117.5	121.9	151.4	125.3	113.1	119.7	251.7	112.3	150.4	143.4	132.2	1.0	14.4	15.3
	Mar	139.8	141.3	128.2	137.8	137.5	120.7	119.8	161.0	127.6	111.7	118.3	241.8	113.5	153.2	146.6	129.5	1.8	13.3	14.0
	Apr	141.9	144.2	133.2	139.4	139.1	121.7	124.8	163.6	130.6	122.4	118.6	241.8	121.2	156.3	153.1	132.5	1.5	16.5	13.5
	May	146.9	147.5	135.4	145.3	144.9	124.5	126.7	169.3	131.5	134.9	119.4	241.8	119.0	170.1	148.9	134.8	3.5	19.6	13.4
	Jun	151.0	147.0	138.8	151.8	151.4	122.2	131.8	164.4	129.9	126.4	132.3	258.3	122.0	171.7	156.1	146.9	2.8	21.9	13.9
	Jul	155.3	146.2	138.3	159.1	158.6	120.7	130.9	163.4	131.0	131.9	134.7	244.1	119.8	169.2	145.6	147.1	2.8	25.5	15.2
	Aug	157.1	142.1	136.5	164.7	164.2	126.1	128.5	155.1	132.6	131.6	128.3	242.0	122.2	181.2	147.7	145.8	1.2	24.4	16.3
	Sep	156.2	143.8	139.3	162.8	162.2	131.0	121.9	158.8	137.4	135.2	129.2	241.8	119.8	187.3	133.2	147.6	-0.6	22.5	17.4
	Oct	153.9	145.6	138.5	157.8	157.2	132.9	123.5	161.7	138.4	134.0	130.9	241.8	120.3	186.4	139.0	146.3	-1.5	18.1	17.9
	Nov	153.5	142.9	134.5	159.8	159.3	130.0	118.8	154.6	129.6	139.6	132.1	241.8	116.8	186.1	135.6	143.0	-0.3	14.9	18.1
	Dec	155.5	142.7	133.4	162.9	162.4	133.5	120.7	155.4	132.3	141.0	129.7	241.8	124.7	182.5	124.3	156.0	1.3	18.4	18.6
2006	Jan	153.1	146.0	137.9	157.6	157.1	136.8	117.7	157.0	134.2	138.0	139.9	241.8	126.1	184.4	124.8	150.2	-1.6	12.6	18.5
	Feb	158.6	159.0	140.9	156.9	156.4	132.9	122.5	190.5	134.3	145.7	130.3	241.8	115.1	178.3	131.0	138.2	3.6	15.5	18.5
	Mar	160.4	164.8	143.1	156.3	155.8	135.1	124.2	200.9	139.1	142.4	132.1	241.8	115.1	179.4	131.9	136.2	1.2	14.8	18.6
	Apr	161.6	165.9	148.2	158.0	157.5	136.0	127.9	199.3	142.4	141.3	134.7	241.8	115.7	184.1	128.2	142.4	0.7	13.9	18.3
	May	161.9	166.5	153.0	159.1	158.6	136.9	129.5	197.0	143.9	134.2	135.0	241.8	112.5	193.1	122.8	144.2	0.2	10.2	17.5
	Jun	163.9	170.7	157.9	159.4	159.0	137.3	132.2	204.9	144.6	135.1	137.5	241.8	118.9	181.5	123.5	144.0	1.2	8.5	16.3

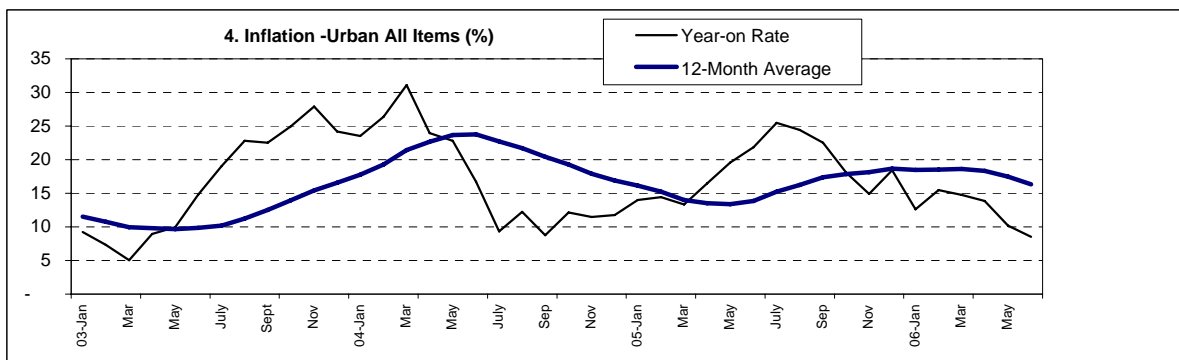
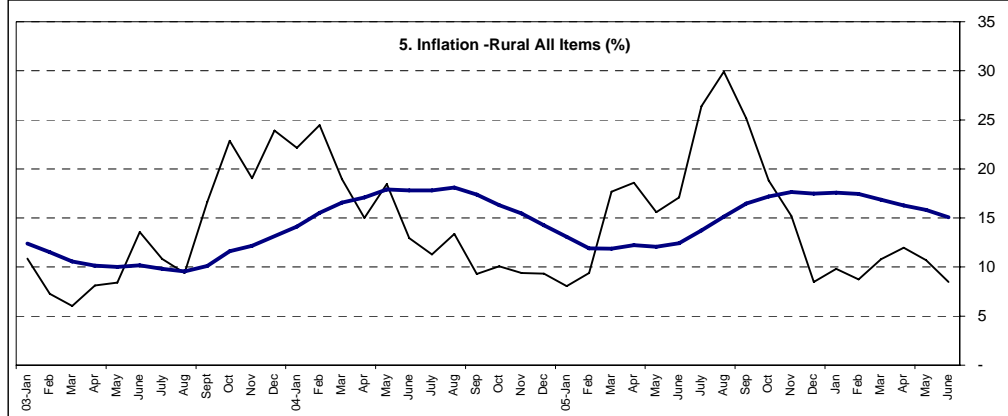


Table 4 Rural Consumer Price Index (Base MAY 2003 = 100)

	All Items	All Items less Farm Produce.	All Items less Farm Produce, and Energy	Food	Food & Non Alcoholic Bev.	Alcoholic Beverage, Tobacco and Kola	Clothing and Footwear	Housing Water, Electricity, Gas and Other Fuel	Household Equipment Maintenance.	Health.	Transport	Communication	Recreation & Culture.	Education	Restaurant & Hotels	Miscellaneous Goods & Services	Month-on (%)	Year-on (%)	12-month average (%)
Weights	1000.0	402.6	335.9	640.1	648.3	23.9	30.4	184.5	35.5	15.7	39.0	0.9	7.1	1.6	10.3	3.0			
2003	Jan 97.5	98.6	97.2	97.5	97.6	90.6	97.5	99.7	102.0	113.1	76.6	101.7	94.9	175.7	111.8	100.1	2.3	10.9	12.4
	Feb 96.1	97.8	98.7	95.4	96.5	90.1	94.8	96.7	99.1	106.4	84.0	96.7	95.5	176.3	105.7	94.2	-1.5	7.3	11.5
	Mar 95.0	99.5	102.5	92.6	93.2	99.1	101.0	95.3	101.3	110.4	91.4	93.7	95.5	73.2	110.2	137.5	-1.1	6.0	10.6
	Apr 99.2	101.1	101.8	97.9	98.1	96.5	101.2	101.1	102.4	111.1	100.3	96.6	98.7	88.4	114.4	99.7	4.5	8.1	10.1
	May 100.0	100.0	100.0	100.0	100.0	100.0	100.0	100.0	100.0	100.0	100.0	100.0	100.0	100.0	100.0	100.0	0.8	8.4	10.0
	June 104.8	106.1	101.9	103.5	103.5	101.2	107.4	107.2	105.1	115.4	101.3	99.2	107.0	106.0	103.2	108.2	4.8	13.6	10.2
	July 107.9	122.9	105.8	103.3	103.3	100.5	100.9	124.5	108.8	122.5	99.0	106.5	108.5	95.6	129.8	101.9	3.0	10.8	9.8
	Aug 106.2	114.5	107.5	101.3	101.2	106.8	105.3	120.8	104.5	115.0	103.6	103.5	106.1	146.9	118.9	108.2	-1.6	9.4	9.6
	Sep 111.8	120.5	111.9	105.9	105.8	102.8	120.8	133.1	109.7	138.3	112.7	103.5	114.3	161.5	126.6	123.7	5.2	16.6	10.1
	Oct 113.6	128.8	116.2	105.2	105.6	106.4	109.4	137.7	106.1	130.7	116.1	107.9	176.7	117.7	112.2	110.3	1.6	22.9	11.6
	Nov 114.3	129.4	122.0	105.8	106.1	103.6	113.4	133.4	108.3	143.1	111.3	108.2	178.1	138.0	117.5	139.5	0.6	19.1	12.2
	Dec 118.1	130.3	125.2	111.7	112.0	105.0	117.9	135.1	107.7	149.1	111.2	108.1	180.9	137.6	119.6	157.1	3.3	23.9	13.2
2004	Jan 119.1	136.7	122.4	109.0	109.3	108.1	112.3	141.5	106.8	135.2	115.8	107.7	181.7	153.0	120.6	152.3	0.9	22.1	14.1
	Feb 119.6	138.3	122.5	109.2	109.6	109.6	110.8	147.2	104.5	132.7	112.4	107.9	175.8	122.5	123.0	166.2	0.4	24.5	15.5
	Mar 113.0	127.1	128.2	105.6	106.0	108.6	108.9	130.0	110.2	130.8	115.6	108.1	179.7	130.1	124.5	154.1	-5.5	19.0	16.6
	Apr 114.1	120.4	115.7	110.7	111.1	106.0	111.0	126.3	105.2	129.6	116.2	108.0	182.2	115.4	106.0	125.1	1.0	15.0	17.1
	May 118.5	123.8	118.0	116.2	116.4	109.5	111.1	128.0	104.6	125.8	110.2	125.3	117.2	111.4	117.4	122.8	3.8	18.5	17.9
	June 118.3	119.0	118.5	118.6	118.59	108.33	108.5	124.5	106.7	115.28	109.9	132.33	117.0	103.82	116.07	115.18	-0.1	13.0	17.8
	July 120.1	128.3	118.4	116.1	116.3	110.5	111.1	131.9	114.5	123.1	127.3	201.8	113.7	100.1	117.7	126.3	1.5	11.3	17.8
	Aug 120.4	125.2	122.1	117.5	117.6	119.0	114.9	133.9	112.6	119.2	132.5	196.6	114.2	107.7	113.7	116.6	0.3	13.4	18.1
	Sep 122.2	124.5	122.1	121.0	121.1	110.3	115.5	134.1	109.7	112.7	124.8	221.6	117.2	121.3	115.0	119.2	1.4	9.3	17.4
	Oct 125.0	130.5	123.7	121.2	121.4	121.4	115.5	143.4	115.8	118.4	124.1	237.3	119.9	118.2	113.1	127.5	2.3	10.1	16.3
	Nov 125.0	129.7	126.5	122.5	122.6	112.0	116.3	143.4	110.9	119.6	125.9	237.9	118.7	128.8	116.2	125.3	0.0	9.4	15.4
	Dec 129.1	138.1	123.1	124.2	124.4	112.9	109.7	153.7	114.4	110.3	116.6	237.8	117.3	102.8	118.4	126.6	3.3	9.3	14.2
2005	Jan 128.7	135.4	123.1	124.6	124.7	118.4	112.3	152.9	112.2	120.2	120.9	221.2	123.5	129.7	120.6	123.7	-0.3	8.0	13.1
	Feb 130.8	135.0	126.5	128.6	128.7	114.2	112.8	147.6	115.5	121.1	115.1	238.2	117.8	129.4	120.9	132.9	1.7	9.4	11.9
	Mar 132.9	131.2	128.3	134.2	134.1	116.1	115.5	145.0	116.4	123.8	105.8	233.9	119.5	122.3	122.6	130.5	1.6	17.7	11.9
	Apr 135.3	137.5	133.2	134.0	134.0	115.7	113.0	155.9	115.3	124.1	131.4	237.3	118.0	133.1	126.3	137.5	1.8	18.6	12.2
	May 136.9	142.4	135.5	133.9	133.9	120.4	113.3	158.4	124.3	120.4	132.7	237.3	123.9	133.1	126.8	129.7	1.2	15.6	12.1
	Jun 138.5	139.2	139.4	137.3	137.3	117.3	113.5	150.9	124.0	121.8	123.7	232.3	123.4	134.6	129.2	133.4	1.2	17.1	12.4
	Jul 151.8	140.2	138.4	158.7	158.4	125.2	115.2	156.1	130.9	123.4	128.1	243.4	114.1	124.7	124.8	126.0	9.6	26.4	13.7
	Aug 156.5	141.2	137.4	165.0	164.4	119.9	114.8	157.3	134.1	123.6	128.5	235.0	116.1	123.9	130.4	132.6	3.1	29.9	15.1
	Sep 152.9	145.9	139.9	155.7	155.6	121.5	111.0	161.7	121.1	124.7	119.6	207.5	124.8	126.8	135.3	139.2	-2.3	25.1	16.5
	Oct 148.6	144.6	140.8	150.5	150.3	118.5	117.1	162.5	124.6	123.0	138.7	192.7	120.6	120.0	141.0	128.4	-2.8	18.8	17.2
	Nov 144.0	142.5	136.8	144.1	144.0	122.5	122.8	159.3	126.2	128.8	125.3	212.7	118.1	112.2	141.3	147.3	-3.1	15.2	17.6
	Dec 140.0	140.7	134.4	138.2	137.9	123.7	104.9	161.0	128.2	136.5	130.2	206.1	116.1	131.9	120.4	135.2	-2.8	8.5	17.5
2006	Jan 141.3	142.1	138.6	140.7	140.7	128.1	112.9	157.9	125.4	136.8	143.4	156.8	121.4	136.5	120.1	143.1	0.9	9.8	17.6
	Feb 142.3	146.8	141.8	140.3	140.4	126.8	120.8	165.4	128.5	148.9	133.1	210.4	113.6	120.1	120.8	139.1	0.7	8.7	17.5
	Mar 147.3	152.4	143.7	144.8	144.9	123.8	114.3	171.3	124.1	152.5	138.5	211.3	115.6	119.0	130.5	120.9	3.5	10.8	16.9
	Apr 151.6	161.2	148.6	145.3	145.1	124.7	120.0	183.1	124.2	142.6	140.7	208.4	118.9	103.6	128.3	125.4	2.9	12.0	16.3
	May 151.6	164.0	154.0	145.0	145.1	128.0	111.9	178.3	122.9	125.3	150.8	197.4	120.0	106.3	129.3	127.2	0.0	10.7	15.8
	Jun 150.3	156.6	159.0	146.4	146.3	127.9	116.5	180.3	126.7	126.1	144.8	202.4	121.9	116.0	132.8	144.4	-0.9	8.5	15.1



**Table 5 Combined Urban And Rural State Consumer Price Index
(Base Period: May 2003 = 100)**

State	Jun-05		May-06		Jun-06	
	Food	All Items	Food	All Items	Food	All Items
Abia	130.2	137.7	144.4	158.5	146.5	161.5
Abuja	172.2	169.0	166.4	161.6	165.7	167.8
Adamawa	151.9	146.6	172.1	170.9	168.2	206.8
Akwa Ibom	135.5	138.6	162.0	163.4	163.3	160.8
Anambra	140.1	140.0	161.7	156.8	161.3	157.8
Bauchi	191.7	178.9	139.5	171.7	166.6	166.1
Bayelsa	122.6	133.3	136.7	141.0	139.4	140.4
Benue	131.5	132.2	115.3	124.0	160.1	169.7
Borno	152.0	149.6	139.6	144.7	150.5	153.1
Cross River	152.0	160.1	176.6	190.4	161.5	191.0
Delta	146.8	143.3	157.9	166.0	149.9	160.1
Ebonyi	128.1	127.2	135.4	136.3	141.9	140.5
Edo	153.4	155.6	175.2	168.3	159.6	163.7
Ekiti	137.1	129.2	141.9	147.9	139.6	146.7
Enugu	110.1	129.1	132.7	143.7	130.0	145.1
Gombe	156.8	155.7	145.9	180.5	141.7	153.8
Imo	126.6	130.7	153.4	155.0	164.7	163.8
Jigawa	185.7	161.5	138.4	143.4	178.3	156.1
Kaduna	145.1	139.0	125.6	135.7	135.7	138.8
Kano	141.6	144.0	130.9	138.6	142.9	149.0
Katsina	182.7	163.8	153.1	158.2	168.1	160.4
Kebbi	138.8	135.2	153.8	166.8	157.2	151.6
Kogi	116.0	123.5	143.1	156.3	138.7	145.6
Kwara	121.6	123.9	129.4	129.7	124.8	130.7
Lagos	141.1	154.1	156.0	168.3	157.0	170.1
Nassarawa	146.8	148.9	157.7	160.6	148.8	152.6
Niger	165.6	153.9	144.4	143.7	155.6	149.7
Ogun	128.1	131.8	142.3	147.0	137.4	143.3
Ondo	144.1	148.3	156.3	151.8	140.3	150.4
Osun	136.8	137.2	156.1	156.7	149.7	153.4
Oyo	120.7	125.7	157.8	150.8	156.7	151.2
Plateau	141.5	142.9	171.6	164.1	181.2	170.6
Rivers	138.2	140.7	159.8	151.2	136.3	149.5
Sokoto	147.5	147.9	137.8	146.1	139.6	164.8
Taraba	149.0	141.2	150.4	145.6	145.5	142.2
Yobe	184.5	168.2	142.8	152.0	154.7	160.6
Zamfara	147.0	156.4	150.0	163.3	149.0	162.3

Note: Indices may not be used for inter-state price comparison because market baskets differ from state to state

Table 5 Composite CPI Component Contribution To Overall Change

June-06

Code	Weights	Month-on		Year-on		12-Month Average	
		Change %	Contribution	Change %	Contribution	Change %	Contribution
All Items	1000.0	-0.2	-0.2	8.5	8.5	15.5	15.5
All Items less Farm Produce.	409.5	-2.4	-1.0	13.6	5.5	11.0	4.7
All Items less Farm Produce & Energy	335.9	3.3	1.1	14.0	4.6	12.3	4.0
Food	637.6	0.8	0.5	6.2	3.9	18.0	11.2
Food & Non Alcoholic Beverages	644.1	0.7	0.4	6.2	3.9	17.8	11.2
Alcoholic Beverage, Tobacco & Kola	20.6	0.1	0.0	10.9	0.2	9.6	0.2
Clothing & Footwear	32.1	3.0	0.1	1.3	0.0	3.1	0.1
Housing Water, Electricity, Gas & Other Fuel	181.0	2.7	0.6	22.2	4.5	12.1	2.5
Furnishings & Household Equipment & Maintenance	38.2	2.0	0.1	5.7	0.2	9.9	0.3
Health	13.6	0.7	0.0	5.0	0.1	13.7	0.2
Transport	42.4	-0.4	0.0	8.4	0.3	12.4	0.5
Communication	1.1	1.3	0.0	-9.8	0.0	-4.1	0.0
Recreation & Culture	8.9	3.2	0.0	-1.7	0.0	1.2	0.0
Education	2.1	0.8	0.0	-4.9	0.0	6.2	0.0
Restaurant & Hotels	12.9	1.9	0.0	-7.7	-0.1	3.4	0.0
Miscellaneous Goods & Services	3.0	7.3	0.0	3.6	0.0	6.4	0.0

CPI Composite: Contribution: Month-on Change

Data Columns

	<i>Weights</i>	May-06	Jun-06	% Change	Contrib (% p)
All Items	1000.0	154.69	154.39	-0.19	-0.19
All Items less Farm Produce.	409.5	164.78	160.82	-2.40	-1.05
All Items less Farm Produce & Energy	335.9	153.67	158.69	3.27	1.09
Food	637.6	148.42	149.56	0.77	0.47
Food & Non Alcoholic Beverages	644.1	148.37	149.36	0.67	0.41
Alcoholic Beverage, Tobacco & Kola	20.6	132.68	132.86	0.14	0.00
Clothing & Footwear	32.1	120.92	124.51	2.97	0.07
Housing Water, Electricity. Gas & Other Fuel	181.0	187.77	192.77	2.66	0.59
Furnishings & Household Equipment & Maintanance.	38.2	130.78	133.37	1.98	0.06
Health.	13.6	129.22	130.06	0.65	0.01
Transport	42.4	140.71	140.11	-0.43	-0.02
Communication	1.1	217.20	219.95	1.27	0.00
Recreation & Culture.	8.9	116.98	120.69	3.17	0.02
Education	2.1	140.94	142.12	0.84	0.00
Restaurant & Hotels	12.9	126.69	129.11	1.91	0.02
Miscellaneous Goods & Sevices	3.0	134.44	144.20	7.26	0.02
Discrepancy					-1.39

CPI Composite: Contribution: Year-on Change

	<i>Weights</i>	Data Columns		<i>% Change</i>	<i>Contrib (% p)</i>
		Jun-05	Jun-06		
All Items	1000.0	142.3	154.39	8.49	8.49
All Items less Farm Produce.	409.5	141.5	160.82	13.62	5.55
All Items less Farm Produce & Energy	335.9	139.2	158.69	13.99	4.60
Food	637.6	140.8	149.56	6.24	3.94
Food & Non Alcoholic Beverages	644.1	140.7	149.36	6.18	3.93
Alcoholic Beverage, Tobacco & Kola	20.6	119.8	132.86	10.88	0.19
Clothing & Footwear	32.1	122.9	124.51	1.34	0.04
Housing Water, Electricity, Gas & Other Fuel	181.0	157.7	192.77	22.22	4.46
Furnishings & Household Equipment & Maintenance.	38.2	126.2	133.37	5.66	0.19
Health.	13.6	123.8	130.06	5.05	0.06
Transport	42.4	129.2	140.11	8.43	0.32
Communication	1.1	243.9	219.95	-9.80	-0.02
Recreation & Culture.	8.9	122.8	120.69	-1.72	-0.01
Education	2.1	149.4	142.12	-4.87	-0.01
Restaurant & Hotels	12.9	139.9	129.11	-7.72	-0.10
Miscellaneous Goods & Services	3.0	139.1	144.20	3.64	0.01

CPI Composite: Contribution: 12 Month average-on Change

Data Columns

	<i>Weights</i>	Jun-05	Jun-06	% Change	Contrib (% p)
All Items	1000.0	130.78	151.01	15.47	15.47
All Items less Farm Produce.	409.5	134.75	149.64	11.05	4.66
All Items less Farm Produce & Energy	335.9	126.89	142.49	12.29	4.01
Food	637.6	127.74	150.70	17.98	11.19
Food & Non Alcoholic Beverages	644.1	127.74	150.47	17.79	11.20
Alcoholic Beverage, Tobacco & Kola	20.6	117.29	128.51	9.57	0.18
Clothing & Footwear	32.1	116.49	120.12	3.12	0.09
Housing Water, Electricity. Gas & Other Fuel	181.0	152.23	170.59	12.06	2.54
Furnishings & Household Equipment & Mainta	38.2	118.48	130.24	9.92	0.34
Health.	13.6	118.58	134.80	13.68	0.17
Transport	42.4	118.90	133.68	12.43	0.48
Communication	1.1	232.23	222.60	-4.14	-0.01
Recreation & Culture.	8.9	117.25	118.63	1.18	0.01
Education	2.1	136.67	145.12	6.18	0.01
Restaurant & Hotels	12.9	126.38	130.66	3.39	0.04
Miscellaneous Goods & Sevices	3.0	130.38	138.75	6.42	0.02