

NO. 446

21st May, 2008

CONSUMER PRICE INDEX: APRIL 2008

ALL ITEMS INDEX

The Composite Consumer Price Index went up by 1.6 percent to 174.3 points in April 2008. This was compared to 171.6 observed in March 2008. The rise in the index was caused mainly by increase in the price of some food items, household goods, kerosene and some building materials. The Urban All items index rose by 1.7 percent while the corresponding Rural index rose by 1.5 percent over the period when compared with their preceding months.

The year on year average Consumer Price level as at April 2008 rose by 8.2 percent. This was higher than 7.8 observed in March 2008. The corresponding urban and rural indices rose by 11.1 and 6.7 percent respectively over the period.

The percentage change in the average Composite CPI for the twelve-month period ending April 2008 over the average of the CPI for the previous twelve-month period was 6.1. This was slightly higher than what was recorded by making similar comparison in March 2008.

The corresponding urban and rural indices rose by 11.0 and 3.7 percent respectively.

FOOD INDEX

The Composite Food Index rose by 1.5 percent in April 2008. The rise in the index was caused by sharp increase in the prices of rice and some other staple foods, fruits, cooking oils and some non-alcoholic beverages. The level of the composite food index was higher than the corresponding level a year ago by 13.1 percent. The average annual rate of rise of the index was 5.1 percent for the twelve-month period ending April 2008.

ALL ITEMS LESS FARM PRODUCE

The "All Items Less Farm Produce" index which excludes the prices of agricultural produce was 173.5 in April 2008. The index was up by 1.5 percent when compared with March 2008 figure.

In the twelve-month to April 2008, the index rose by 1.2 percent while the average annual rate of rise of the index was 6.4 percent for the twelve-month period ending April 2008.

Table 1 Composite Consumer Price Index (Base May 2003 = 100)

| | All Items Index | | | | All Items less Farm Produce | | | | Food | | | |
|----------------|-----------------|---------------------|--------------------|-----------------------------|-----------------------------|---------------------|--------------------|-----------------------------|--------------|---------------------|--------------------|-----------------------------|
| | Monthly | Month-on change (%) | Year-on change (%) | 12-Month average change (%) | Monthly | Month-on change (%) | Year-on change (%) | 12-Month average change (%) | Monthly | Month-on change (%) | Year-on change (%) | 12-Month average change (%) |
| Weights | 1000.0 | | | | 409.5 | | | | 637.6 | | | |
| 2004 Jan | 119.1 | 1.0 | 22.4 | 15.0 | 134.8 | 3.4 | 38.0 | 29.0 | 109.7 | -1.5 | 11.9 | 6.3 |
| Feb | 119.7 | 0.5 | 24.8 | 16.5 | 136.1 | 0.9 | 41.1 | 31.2 | 110.0 | 0.3 | 14.5 | 7.2 |
| Mar | 116.1 | -3.0 | 22.5 | 17.8 | 129.5 | -4.8 | 32.6 | 32.6 | 108.0 | -1.8 | 15.6 | 8.5 |
| Apr | 116.4 | 0.3 | 17.5 | 18.5 | 122.6 | -5.4 | 22.5 | 32.9 | 112.5 | 4.1 | 14.4 | 9.4 |
| May | 119.8 | 2.9 | 19.8 | 19.4 | 123.4 | 0.7 | 23.4 | 33.2 | 118.1 | 4.9 | 18.1 | 10.6 |
| June | 120.0 | 0.2 | 14.1 | 19.4 | 121.8 | -1.3 | 14.7 | 32.3 | 119.3 | 1.0 | 14.5 | 11.3 |
| July | 121.2 | 1.0 | 10.7 | 19.1 | 128.2 | 5.3 | 5.8 | 29.0 | 117.1 | -1.8 | 12.2 | 12.4 |
| Aug | 122.2 | 0.8 | 13.0 | 19.1 | 126.2 | -1.6 | 9.1 | 26.9 | 119.1 | 1.7 | 16.3 | 13.7 |
| Sep | 123.8 | 1.3 | 9.1 | 18.2 | 126.8 | 0.5 | 3.6 | 23.9 | 121.6 | 2.1 | 14.6 | 14.4 |
| Oct | 126.6 | 2.3 | 10.7 | 17.1 | 132.4 | 4.4 | 3.4 | 20.7 | 122.2 | 0.5 | 15.4 | 14.6 |
| Nov | 127.6 | 0.8 | 10.0 | 16.1 | 133.5 | 0.9 | 3.2 | 17.9 | 123.6 | 1.1 | 15.1 | 14.8 |
| Dec | 129.7 | 1.7 | 10.0 | 15.0 | 138.0 | 3.4 | 5.9 | 15.5 | 124.8 | 1.0 | 12.1 | 14.5 |
| 2005 Jan | 130.8 | 0.9 | 9.8 | 14.0 | 137.4 | -0.4 | 2.0 | 12.6 | 126.2 | 1.2 | 15.1 | 14.8 |
| Feb | 132.8 | 1.5 | 10.9 | 12.9 | 135.5 | -1.4 | -0.4 | 9.4 | 130.6 | 3.5 | 18.7 | 15.2 |
| Mar | 135.0 | 1.7 | 16.3 | 12.5 | 134.2 | -0.9 | 3.6 | 7.3 | 135.1 | 3.4 | 25.0 | 16.0 |
| Apr | 137.3 | 1.7 | 17.9 | 12.6 | 139.5 | 3.9 | 13.8 | 6.8 | 135.3 | 0.2 | 20.3 | 16.5 |
| May | 139.9 | 1.9 | 16.8 | 12.5 | 143.9 | 3.2 | 16.6 | 6.5 | 136.6 | 1.0 | 15.7 | 16.3 |
| Jun | 142.3 | 1.7 | 18.6 | 12.9 | 141.5 | -1.6 | 16.2 | 6.7 | 140.8 | 3.0 | 18.0 | 16.6 |
| Jul | 152.9 | 7.4 | 26.1 | 14.2 | 142.0 | 0.3 | 10.7 | 7.1 | 158.8 | 12.8 | 35.7 | 18.6 |
| Aug | 156.7 | 2.5 | 28.2 | 15.5 | 141.5 | -0.4 | 12.1 | 7.4 | 164.9 | 3.8 | 38.5 | 20.5 |
| Sep | 153.9 | -1.8 | 24.3 | 16.8 | 145.3 | 2.7 | 14.6 | 8.3 | 157.4 | -4.5 | 29.5 | 21.8 |
| Oct | 150.2 | -2.4 | 18.6 | 17.4 | 144.9 | -0.3 | 9.4 | 8.8 | 152.2 | -3.3 | 24.6 | 22.5 |
| Nov | 146.9 | -2.2 | 15.1 | 17.8 | 142.6 | -1.5 | 6.8 | 9.1 | 147.9 | -2.8 | 19.7 | 22.9 |
| Dec | 144.7 | -1.5 | 11.6 | 17.9 | 141.3 | -0.9 | 2.4 | 8.8 | 144.1 | -2.5 | 15.5 | 23.1 |
| 2006 Jan | 144.9 | 0.1 | 10.7 | 17.9 | 143.3 | 1.4 | 4.3 | 9.0 | 144.8 | 0.5 | 14.7 | 22.9 |
| Feb | 147.2 | 1.6 | 10.8 | 17.8 | 150.5 | 5.0 | 11.1 | 10.0 | 144.3 | -0.3 | 10.5 | 22.1 |
| Mar | 151.3 | 2.8 | 12.0 | 17.4 | 156.1 | 3.7 | 16.3 | 11.1 | 147.6 | 2.3 | 9.3 | 20.7 |
| Apr | 154.6 | 2.2 | 12.6 | 16.9 | 162.7 | 4.2 | 16.6 | 11.3 | 148.3 | 0.5 | 9.6 | 19.8 |
| May | 154.7 | 0.1 | 10.5 | 16.4 | 164.8 | 1.3 | 14.5 | 11.2 | 148.4 | 0.1 | 8.6 | 19.1 |
| Jun | 154.4 | -0.2 | 8.5 | 15.5 | 160.8 | -2.4 | 13.6 | 11.0 | 149.6 | 0.8 | 6.2 | 18.0 |
| Jul | 157.5 | 2.0 | 3.0 | 13.5 | 161.3 | 0.3 | 13.6 | 11.3 | 153.0 | 2.3 | -3.7 | 14.5 |
| Aug | 162.5 | 3.2 | 3.7 | 11.4 | 161.9 | 0.4 | 14.5 | 11.5 | 161.2 | 5.3 | -2.3 | 11.0 |
| Sep | 163.5 | 0.6 | 6.3 | 10.0 | 160.7 | -0.8 | 10.6 | 11.2 | 164.1 | 1.8 | 4.3 | 9.0 |
| Oct | 159.4 | -2.5 | 6.1 | 9.0 | 157.9 | -1.7 | 9.0 | 11.1 | 159.4 | -2.9 | 4.7 | 7.5 |
| Nov | 158.3 | -0.7 | 7.8 | 8.5 | 159.9 | 1.3 | 12.1 | 11.6 | 155.9 | -2.2 | 5.4 | 6.4 |
| Dec | 157.1 | -0.8 | 8.5 | 8.2 | 165.7 | 3.6 | 17.3 | 12.8 | 149.7 | -4.0 | 3.9 | 5.6 |
| 2007 Jan | 156.4 | -0.4 | 8.0 | 8.0 | 171.0 | 3.2 | 19.3 | 14.0 | 144.6 | -3.4 | -0.1 | 4.4 |
| Feb | 157.6 | 0.8 | 7.1 | 7.7 | 167.1 | -2.3 | 11.0 | 14.0 | 149.1 | 3.1 | 3.3 | 3.9 |
| Mar | 159.2 | 1.0 | 5.2 | 7.2 | 170.0 | 1.7 | 8.9 | 13.4 | 150.1 | 0.7 | 1.7 | 3.3 |
| Apr | 161.1 | 1.2 | 4.2 | 6.5 | 171.4 | 0.8 | 5.4 | 12.4 | 151.4 | 0.9 | 2.1 | 2.7 |
| May | 161.9 | 0.5 | 4.6 | 6.0 | 172.4 | 0.6 | 4.6 | 11.5 | 151.9 | 0.4 | 2.4 | 2.2 |
| Jun | 164.3 | 1.5 | 6.4 | 5.9 | 176.3 | 2.3 | 9.6 | 11.1 | 154.4 | 1.6 | 3.2 | 2.0 |
| Jul | 165.1 | 0.5 | 4.8 | 6.0 | 177.3 | 0.6 | 9.9 | 10.8 | 154.7 | 0.2 | 1.1 | 2.4 |
| Aug | 169.4 | 2.6 | 4.2 | 6.1 | 180.1 | 1.6 | 11.2 | 10.6 | 159.3 | 3.0 | -1.2 | 2.5 |
| Sep | 170.2 | 0.5 | 4.1 | 5.9 | 177.5 | -1.5 | 10.5 | 10.6 | 162.8 | 2.2 | -0.8 | 2.1 |
| Oct | 166.7 | -2.1 | 4.6 | 5.7 | 174.8 | -1.5 | 10.7 | 10.7 | 159.3 | -2.2 | -0.1 | 1.7 |
| Nov | 166.5 | -0.1 | 5.2 | 5.5 | 171.7 | -1.8 | 7.4 | 10.3 | 160.8 | 1.0 | 3.2 | 1.5 |
| Dec | 167.4 | 0.6 | 6.6 | 5.4 | 171.7 | 0.0 | 3.6 | 9.2 | 162.0 | 0.7 | 8.2 | 1.9 |
| 2008 Jan | 169.8 | 1.4 | 8.6 | 5.5 | 175.4 | 2.1 | 2.5 | 7.9 | 162.9 | 0.5 | 12.6 | 2.9 |
| Feb | 170.3 | 0.3 | 8.0 | 5.5 | 177.8 | 1.4 | 6.4 | 7.5 | 162.1 | -0.5 | 8.7 | 3.3 |
| Mar | 171.6 | 0.8 | 7.8 | 5.8 | 170.9 | -3.9 | 0.5 | 6.8 | 168.7 | 4.1 | 12.4 | 4.2 |
| Apr | 174.3 | 1.6 | 8.2 | 6.1 | 173.5 | 1.5 | 1.2 | 6.4 | 171.3 | 1.5 | 13.1 | 5.1 |

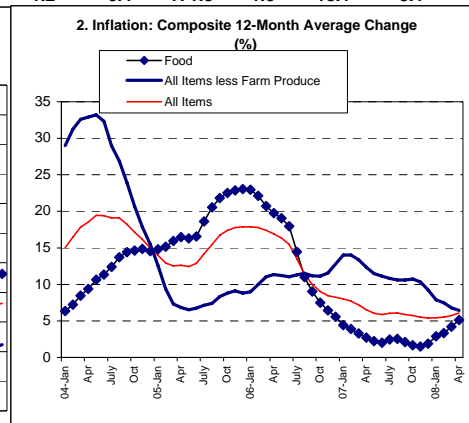
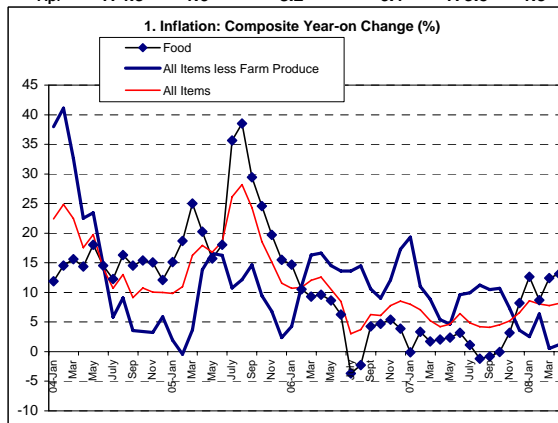


Table 2 Composite Consumer Price Index (Base May 2003 = 100)

| | | All Items | All Items less Farm Produce. | All Items less Farm Produce and Energy | Food | Food & Non-Alcoholic Bev. | Alcoholic Beverage, Tobacco and Kola | Clothing and Footwear | Housing, Water, Electricity, Gas and Other Fuel | Furnishings & Household Equipment Maintenance. | Health. | Transport | Communication | Recreation & Culture. | Education | Restaurant & Hotels | Miscellaneous Goods & Services | Month-on (%) | Year-on (%) | 12-month average (%) |
|------|---------|-----------|------------------------------|--|-------|---------------------------|--------------------------------------|-----------------------|---|--|---------|-----------|---------------|-----------------------|-----------|---------------------|--------------------------------|--------------|-------------|----------------------|
| | Weights | 1000 | 409.53 | 335.89 | 637.6 | 644.1 | 20.6 | 32.1 | 181.0 | 38.2 | 13.6 | 42.4 | 1.1 | 8.9 | 2.1 | 12.9 | 3.0 | | | |
| 2004 | Jan | 119.1 | 134.8 | 122.4 | 109.7 | 109.9 | 107.9 | 136.2 | 139.4 | 109.8 | 126.5 | 125.1 | 104.5 | 149.4 | 157.0 | 119.1 | 138.1 | 1.0 | 22.4 | 15.0 |
| | Feb | 119.7 | 136.1 | 122.6 | 110.0 | 110.3 | 109.3 | 138.5 | 142.0 | 109.3 | 151.3 | 120.8 | 104.6 | 145.3 | 141.9 | 118.5 | 146.4 | 0.5 | 24.8 | 16.5 |
| | Mar | 116.1 | 129.5 | 127.4 | 108.0 | 108.3 | 109.2 | 135.7 | 136.1 | 113.2 | 150.5 | 128.9 | 104.7 | 148.0 | 144.7 | 118.2 | 140.0 | -3.0 | 22.5 | 17.8 |
| | Apr | 116.4 | 122.6 | 116.6 | 112.5 | 112.7 | 108.6 | 107.9 | 132.1 | 107.8 | 124.0 | 124.5 | 104.7 | 113.4 | 131.1 | 114.2 | 122.4 | 0.3 | 17.5 | 18.5 |
| | May | 119.8 | 123.4 | 117.5 | 118.1 | 118.2 | 111.5 | 108.4 | 127.4 | 109.0 | 119.2 | 117.4 | 117.6 | 114.4 | 133.4 | 112.0 | 122.3 | 1.9 | 19.8 | 19.4 |
| | June | 120.0 | 121.8 | 118.2 | 119.3 | 119.2 | 110.6 | 109.1 | 131.8 | 110.0 | 111.6 | 118.3 | 125.0 | 114.6 | 128.7 | 118.0 | 118.2 | 0.2 | 14.1 | 19.4 |
| | July | 121.2 | 128.2 | 118.4 | 117.1 | 117.2 | 109.1 | 112.1 | 138.4 | 116.7 | 117.1 | 117.0 | 180.3 | 111.2 | 121.7 | 117.1 | 126.1 | 1.0 | 10.7 | 19.1 |
| | Aug | 122.2 | 126.2 | 121.3 | 119.1 | 119.1 | 121.5 | 114.6 | 138.1 | 115.1 | 117.6 | 120.5 | 214.1 | 115.4 | 127.4 | 114.1 | 122.9 | 0.8 | 13.0 | 19.1 |
| | Sep | 123.8 | 126.8 | 121.8 | 121.6 | 121.7 | 113.7 | 113.7 | 142.9 | 113.5 | 114.0 | 115.5 | 233.1 | 114.9 | 133.8 | 119.1 | 125.6 | 1.3 | 9.1 | 18.2 |
| | Oct | 126.6 | 132.4 | 123.6 | 122.2 | 122.3 | 119.9 | 114.8 | 151.8 | 116.7 | 117.1 | 115.7 | 240.9 | 116.0 | 133.7 | 118.6 | 130.2 | 2.3 | 10.7 | 17.1 |
| | Nov | 127.6 | 133.5 | 126.4 | 123.6 | 123.6 | 115.5 | 118.2 | 156.1 | 115.4 | 117.2 | 117.5 | 241.0 | 114.7 | 142.6 | 120.8 | 127.8 | 0.8 | 10.0 | 16.1 |
| | Dec | 129.7 | 138.0 | 122.9 | 124.8 | 124.8 | 114.3 | 111.4 | 156.4 | 114.8 | 111.3 | 115.5 | 241.2 | 118.7 | 126.8 | 124.1 | 132.8 | 1.7 | 10.0 | 15.0 |
| 2005 | Jan | 130.8 | 137.4 | 123.9 | 126.2 | 126.2 | 117.8 | 115.8 | 159.0 | 115.6 | 118.7 | 117.0 | 232.0 | 119.3 | 140.2 | 128.6 | 130.2 | 0.9 | 9.8 | 14.0 |
| | Feb | 132.8 | 135.5 | 126.5 | 130.6 | 130.6 | 116.0 | 117.4 | 149.5 | 119.2 | 117.6 | 118.1 | 244.2 | 115.6 | 137.8 | 129.9 | 132.6 | 1.5 | 10.9 | 12.9 |
| | Mar | 135.0 | 134.2 | 128.3 | 135.1 | 134.9 | 118.5 | 117.7 | 153.1 | 120.6 | 118.4 | 113.8 | 237.4 | 117.1 | 134.7 | 132.2 | 130.1 | 1.7 | 16.3 | 12.5 |
| | Apr | 137.3 | 139.5 | 133.2 | 135.3 | 135.2 | 118.8 | 119.0 | 159.8 | 121.0 | 123.4 | 123.2 | 239.3 | 119.3 | 142.4 | 137.0 | 135.4 | 1.7 | 17.9 | 12.6 |
| | May | 139.9 | 143.9 | 135.4 | 136.6 | 136.5 | 122.5 | 120.1 | 163.9 | 127.0 | 126.8 | 124.2 | 239.3 | 121.9 | 147.9 | 135.6 | 131.8 | 1.9 | 16.8 | 12.5 |
| | Jun | 142.3 | 141.5 | 139.2 | 140.8 | 140.7 | 119.8 | 122.9 | 157.7 | 126.2 | 123.8 | 129.2 | 243.9 | 122.8 | 149.4 | 139.9 | 139.1 | 1.7 | 18.6 | 12.9 |
| | Jul | 152.9 | 142.0 | 138.4 | 158.8 | 158.4 | 122.8 | 123.2 | 159.8 | 130.9 | 127.2 | 132.4 | 243.7 | 116.4 | 142.5 | 133.1 | 135.0 | 7.4 | 26.1 | 14.2 |
| | Aug | 156.7 | 141.5 | 137.2 | 164.9 | 164.4 | 123.1 | 121.8 | 156.2 | 133.5 | 127.1 | 128.3 | 238.1 | 118.6 | 146.8 | 137.3 | 138.2 | 2.5 | 28.2 | 15.5 |
| | Sep | 153.9 | 145.3 | 139.7 | 157.4 | 157.2 | 126.5 | 116.6 | 160.2 | 127.2 | 129.3 | 125.7 | 222.8 | 122.8 | 150.9 | 134.4 | 142.8 | -1.8 | 24.3 | 16.8 |
| | Oct | 150.2 | 144.9 | 140.1 | 152.2 | 152.0 | 126.1 | 120.3 | 162.1 | 129.7 | 127.8 | 133.7 | 214.6 | 120.4 | 146.5 | 140.2 | 136.0 | -2.4 | 18.6 | 17.4 |
| | Nov | 146.9 | 142.6 | 136.1 | 147.9 | 147.7 | 126.4 | 120.8 | 156.9 | 127.5 | 133.5 | 129.7 | 225.7 | 117.6 | 141.7 | 139.0 | 145.5 | -2.2 | 15.1 | 17.8 |
| | Dec | 144.7 | 141.3 | 134.1 | 144.1 | 143.8 | 128.9 | 113.0 | 158.1 | 129.7 | 138.5 | 129.9 | 222.0 | 119.6 | 152.1 | 122.0 | 144.1 | -1.5 | 11.6 | 17.9 |
| 2006 | Jan | 144.9 | 143.3 | 138.4 | 144.8 | 144.6 | 132.7 | 115.4 | 157.4 | 128.7 | 137.4 | 141.2 | 194.6 | 123.3 | 155.6 | 122.0 | 146.1 | 0.1 | 10.7 | 17.9 |
| | Feb | 147.2 | 150.5 | 141.5 | 144.3 | 144.2 | 130.0 | 121.7 | 178.2 | 130.7 | 147.5 | 131.3 | 224.4 | 114.2 | 143.4 | 124.8 | 138.7 | 1.6 | 10.8 | 17.8 |
| | Mar | 151.3 | 156.1 | 143.5 | 147.6 | 147.5 | 129.7 | 119.3 | 186.3 | 129.7 | 148.1 | 134.4 | 224.9 | 115.4 | 143.1 | 131.0 | 127.4 | 2.8 | 12.0 | 17.4 |
| | Apr | 154.6 | 162.7 | 148.5 | 148.3 | 148.1 | 130.6 | 124.1 | 191.3 | 131.0 | 142.0 | 136.9 | 223.3 | 117.6 | 135.7 | 128.3 | 132.6 | 2.2 | 12.6 | 16.9 |
| | May | 154.7 | 164.8 | 153.7 | 148.4 | 148.4 | 132.7 | 120.9 | 187.8 | 130.8 | 129.2 | 140.7 | 217.2 | 117.0 | 140.9 | 126.7 | 134.4 | 0.1 | 10.5 | 16.4 |
| | Jun | 154.4 | 160.8 | 158.7 | 149.6 | 149.4 | 132.9 | 124.5 | 192.8 | 133.4 | 130.1 | 140.1 | 220.0 | 120.7 | 142.1 | 129.1 | 144.2 | -0.2 | 8.5 | 15.5 |
| | Jul | 157.5 | 161.3 | 159.4 | 153.0 | 152.7 | 139.5 | 132.3 | 188.4 | 131.1 | 122.4 | 138.5 | 224.0 | 131.3 | 141.2 | 145.8 | 138.9 | 2.0 | 3.0 | 13.5 |
| | Aug | 162.5 | 161.9 | 153.5 | 161.2 | 161.0 | 143.6 | 132.2 | 188.8 | 133.0 | 141.4 | 140.8 | 223.8 | 133.9 | 154.4 | 152.7 | 150.1 | 3.2 | 3.7 | 11.4 |
| | Sep | 163.5 | 160.7 | 155.1 | 164.1 | 163.7 | 146.9 | 134.4 | 188.5 | 135.2 | 144.2 | 148.4 | 225.1 | 138.2 | 165.0 | 154.6 | 145.2 | 0.6 | 6.3 | 10.0 |
| | Oct | 159.4 | 157.9 | 158.4 | 159.4 | 159.1 | 144.3 | 142.5 | 184.7 | 132.6 | 151.5 | 148.8 | 223.0 | 159.0 | 171.5 | 173.4 | 144.6 | -2.5 | 6.1 | 9.0 |
| | Nov | 158.3 | 159.9 | 161.0 | 155.9 | 155.8 | 149.9 | 138.8 | 185.2 | 137.1 | 150.7 | 151.1 | 226.7 | 148.2 | 163.6 | 167.8 | 151.0 | -0.7 | 7.8 | 8.5 |
| | Dec | 157.1 | 165.7 | 164.4 | 149.7 | 149.5 | 152.0 | 146.0 | 187.0 | 143.0 | 152.2 | 160.8 | 223.8 | 141.8 | 154.8 | 183.7 | 153.1 | -0.8 | 8.5 | 8.2 |
| 2007 | Jan | 156.4 | 171.0 | 156.6 | 144.6 | 144.7 | 155.7 | 139.9 | 192.1 | 142.1 | 148.7 | 168.4 | 226.1 | 142.9 | 166.3 | 176.4 | 158.9 | -0.4 | 8.0 | 8.0 |
| | Feb | 157.6 | 167.1 | 154.2 | 149.1 | 149.2 | 157.2 | 141.6 | 187.4 | 137.7 | 146.7 | 171.9 | 228.8 | 140.6 | 166.3 | 185.5 | 137.9 | 0.8 | 7.1 | 7.7 |
| | Mar | 159.2 | 170.0 | 158.2 | 150.1 | 150.2 | 163.5 | 141.0 | 197.0 | 146.0 | 142.2 | 161.4 | 222.0 | 135.6 | 169.2 | 177.9 | 165.7 | 1.0 | 5.2 | 7.2 |
| | Apr | 161.1 | 171.4 | 158.1 | 151.4 | 151.7 | 158.4 | 144.0 | 198.9 | 145.1 | 137.9 | 161.9 | 224.7 | 135.9 | 173.0 | 181.8 | 169.6 | 1.2 | 4.2 | 6.5 |
| | May | 161.9 | 172.4 | 157.9 | 151.9 | 152.1 | 157.7 | 138.3 | 203.9 | 148.7 | 133.7 | 172.8 | 226.0 | 138.8 | 168.1 | 187.3 | 166.0 | 0.5 | 4.6 | 6.0 |
| | Jun | 164.3 | 176.3 | 158.2 | 154.4 | 154.5 | 157.1 | 135.3 | 207.0 | 142.3 | 135.9 | 178.6 | 223.6 | 144.5 | 167.9 | 205.4 | 152.1 | 1.5 | 6.4 | 5.9 |
| | Jul | 165.1 | 177.3 | 158.8 | 154.7 | 155.0 | 155.9 | 138.7 | 211.8 | 144.6 | 134.9 | 170.1 | 224.0 | 144.4 | 177.7 | 210.2 | 154.2 | 0.5 | 4.8 | 6.0 |
| | Aug | 169.4 | 180.1 | 162.1 | 159.3 | 159.5 | 161.3 | 138.9 | 215.4 | 146.7 | 149.6 | 171.0 | 224.5 | 145.6 | 174.7 | 203.3 | 156.6 | 2.6 | 4.2 | 6.1 |
| | Sep | 170.2 | 177.5 | 160.8 | 162.8 | 163.0 | 162.2 | 139.9 | 212.2 | 145.6 | 143.2 | 175.2 | 214.4 | 143.2 | 163.0 | 200.9 | 162.3 | 0.5 | 4.1 | 5.9 |
| | Oct | 166.7 | 174.8 | 157.0 | 159.3 | 159.5 | 158.4 | 143.4 | 207.6 | 147.1 | 151.3 | 167.7 | 193.4 | 144.5 | 183.8 | 211.3 | 156.1 | -2.1 | 4.6 | 5.7 |
| | Nov | 166.5 | 171.7 | 154.0 | 160.8 | 161.2 | 157.9 | 142.7 | 201.9 | 150.8 | 143.5 | 171.4 | 224.7 | 144.6 | 186.2 | 214.7 | 149.9 | -0.1 | 5.2 | 5.5 |
| | Dec | 167.4 | 171.7 | 153.7 | 162.0 | 162.4 | 157.1 | 142.8 | 202.8 | 146.9 | 142.3 | 172.1 | 225.1 | 141.3 | 180.0 | 220.4 | 153.7 | 0.6 | 6.6 | 5.4 |
| 2008 | Jan | 169.8 | 175.4 | 158.8 | 162.9 | 163.2 | 161.0 | 142.5 | 205.1 | 147.7 | 141.7 | 165.9 | 197.7 | 145.3 | 182.6 | 213.3 | 156.2 | 1.4 | 8.6 | 5.5 |
| | Feb | 170.3 | 177.8 | 164.1 | 162.1 | 162.4 | 159.4 | 142.9 | 206.6 | 148.2 | 140.8 | 169.4 | 197.2 | 142.4 | 183.0 | 217.5 | 155.7 | 0.3 | 8.0 | 5.5 |
| | Mar | 171.6 | 170.9 | 156.1 | 168.7 | 168.9 | 163.4 | 140.5 | 201.8 | 152.0 | 145.4 | 161.8 | 194.8 | 144.4 | 181.5 | 220.9 | 151.0 | 0.8 | 7.8 | 5.8 |
| | Apr | 174.3 | 173.5 | 160.4 | 171.3 | 171.5 | 162.7 | 147.6 | 204.5 | 154.1 | 151.1 | 169.9 | 223.5 | 143.8 | 178.7 | 229.6 | 153.2 | 1.6 | 8.2 | 6.1 |

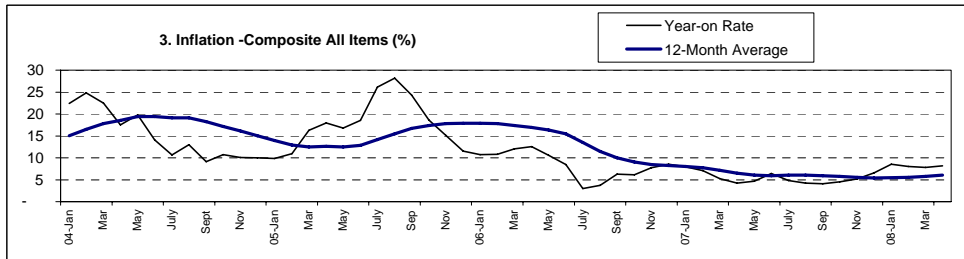


Table 2A Old Series Composite Consumer Price Index (Base September 1985 = 100)

| | All Items | All Items less Farm Produce | Food | Drinks, Tobacco and Kola | Clothing and Footwear | Accommodation, Fuel and Lighting | Household Goods | Medical care and Health Exp. | Transport | Recreation, Ent., Educ. and Cult. Services | Other Services | Month-on (%) | Year-on (%) | 12-month average (%) |
|----------------|-----------|-----------------------------|--------|--------------------------|-----------------------|----------------------------------|-----------------|------------------------------|-----------|--|----------------|--------------|-------------|----------------------|
| <i>Weights</i> | 1000.0 | 362.3 | 690.9 | 47.4 | 46.9 | 118.7 | 35.8 | 11.0 | 23.5 | 13.7 | 12.1 | | | |
| 2004 Jan | 6175.2 | 8089.2 | 5182.8 | 6319.2 | 4571.8 | 11257.2 | 4681.1 | 4577.9 | 8348.5 | 10493.0 | 11241.4 | 1.0 | 22.4 | 15.0 |
| Feb | 6206.3 | 8167.2 | 5198.0 | 6402.3 | 4649.0 | 11467.2 | 4659.8 | 5475.4 | 8061.6 | 10205.0 | 11241.4 | 0.5 | 24.8 | 16.5 |
| Mar | 6020.6 | 7771.1 | 5104.4 | 6396.5 | 4555.0 | 10990.7 | 4826.0 | 5446.5 | 8602.1 | 10396.8 | 11396.0 | -3.0 | 22.5 | 17.8 |
| Apr | 6037.2 | 7357.1 | 5315.1 | 6360.2 | 3621.9 | 10667.7 | 4595.8 | 4487.4 | 8308.5 | 7964.5 | 9963.4 | 0.3 | 17.5 | 18.5 |
| May | 6211.5 | 7405.1 | 5579.7 | 6530.0 | 3638.7 | 10288.2 | 4647.0 | 4313.7 | 7834.7 | 8034.8 | 9955.3 | 2.9 | 19.8 | 19.4 |
| June | 6221.8 | 7309.1 | 5636.4 | 6477.3 | 3662.2 | 10643.5 | 4689.6 | 4038.7 | 7894.7 | 8048.8 | 9621.5 | 0.2 | 14.1 | 19.4 |
| July | 6284.0 | 7693.1 | 5532.5 | 6389.4 | 3762.9 | 11176.5 | 4975.2 | 4237.7 | 7454.3 | 7810.0 | 10264.6 | 1.0 | 10.7 | 19.1 |
| Aug | 6335.9 | 7573.1 | 5627.0 | 7115.6 | 3846.8 | 11152.3 | 4907.0 | 4255.8 | 8041.5 | 8105.0 | 10004.1 | 0.8 | 13.0 | 19.1 |
| Sep | 6418.8 | 7609.1 | 5745.1 | 6658.8 | 3816.6 | 11539.9 | 4838.8 | 4125.6 | 7707.9 | 8069.9 | 10223.9 | 1.3 | 9.2 | 18.2 |
| Oct | 6564.0 | 7945.2 | 5773.4 | 7021.9 | 3853.5 | 12258.6 | 4975.2 | 4237.7 | 7721.2 | 8147.2 | 10598.3 | 2.3 | 10.8 | 17.1 |
| Nov | 6615.9 | 8011.2 | 5837.2 | 6764.8 | 3967.6 | 12605.8 | 4919.8 | 4241.4 | 7841.3 | 8053.0 | 10403.0 | 0.8 | 10.1 | 16.2 |
| Dec | 6729.9 | 8281.2 | 5895.3 | 6691.6 | 3739.4 | 12630.1 | 4894.2 | 4027.8 | 7707.9 | 8334.7 | 10810.0 | 1.7 | 10.1 | 15.0 |
| 2005 Jan | 6783.9 | 8245.2 | 5962.4 | 6904.8 | 3893.8 | 12832.0 | 4928.4 | 4295.6 | 7794.6 | 8378.9 | 10590.2 | 0.8 | 9.9 | 14.0 |
| Feb | 6885.0 | 8130.0 | 6169.8 | 6790.6 | 3941.8 | 12075.3 | 5079.7 | 4255.1 | 7878.0 | 8119.8 | 10793.7 | 1.5 | 10.9 | 12.9 |
| Mar | 6999.5 | 8053.2 | 6382.9 | 6940.0 | 3950.8 | 12363.6 | 5141.5 | 4284.8 | 7594.4 | 8224.4 | 10590.2 | 1.7 | 16.3 | 12.5 |
| Apr | 7118.8 | 8371.2 | 6392.3 | 6957.5 | 3994.5 | 12904.6 | 5158.6 | 4465.7 | 8221.7 | 8378.9 | 11021.6 | 1.7 | 17.9 | 12.6 |
| May | 7253.6 | 8635.3 | 6453.7 | 7174.2 | 4031.4 | 13235.7 | 5414.4 | 4588.8 | 8288.4 | 8561.5 | 10728.6 | 1.9 | 16.8 | 12.5 |
| Jun | 7378.0 | 8491.3 | 6652.2 | 7016.1 | 4125.4 | 12735.0 | 5380.3 | 4480.2 | 8622.1 | 8624.7 | 11322.8 | 1.7 | 18.6 | 12.9 |
| Jul | 7927.6 | 8521.3 | 7502.6 | 7191.8 | 4135.5 | 12904.6 | 5580.6 | 4603.3 | 8835.7 | 8175.2 | 10989.0 | 7.4 | 26.2 | 14.2 |
| Aug | 8124.7 | 8491.3 | 7790.8 | 7209.4 | 4088.5 | 12613.9 | 5691.5 | 4599.6 | 8555.4 | 8329.8 | 11249.5 | 2.5 | 28.2 | 15.5 |
| Sep | 7979.5 | 8719.3 | 7436.5 | 7408.5 | 3913.9 | 12936.9 | 5422.9 | 4679.3 | 8388.6 | 8624.7 | 11624.0 | -1.8 | 24.3 | 16.8 |
| Oct | 7787.6 | 8695.3 | 7190.8 | 7385.0 | 4038.1 | 13090.4 | 5529.5 | 4625.0 | 8922.4 | 8456.2 | 11070.4 | -2.4 | 18.6 | 17.4 |
| Nov | 7616.5 | 8557.3 | 6987.6 | 7402.6 | 4054.9 | 12670.4 | 5435.7 | 4831.2 | 8655.5 | 8259.5 | 11843.7 | -2.2 | 15.1 | 17.8 |
| Dec | 7502.5 | 8479.3 | 6808.1 | 7549.0 | 3793.1 | 12767.3 | 5529.5 | 5012.2 | 8668.8 | 8400.0 | 11729.8 | -1.5 | 11.5 | 17.9 |
| 2006 Jan | 7512.8 | 8599.3 | 6841.2 | 7771.6 | 3873.6 | 12710.8 | 5486.8 | 4972.4 | 9422.9 | 8659.9 | 11892.6 | 0.1 | 10.7 | 17.9 |
| Feb | 7631.1 | 9061.3 | 6817.5 | 7613.5 | 4085.1 | 14390.5 | 5572.1 | 5337.9 | 8762.3 | 8020.7 | 11290.2 | 1.6 | 10.8 | 17.8 |
| Mar | 7842.6 | 9369.8 | 6972.0 | 7595.9 | 4005.9 | 15047.1 | 5530.8 | 5358.5 | 8967.8 | 8105.0 | 10370.4 | 2.8 | 12.0 | 17.4 |
| Apr | 8015.8 | 9763.4 | 7006.5 | 7648.6 | 4165.7 | 15448.4 | 5586.2 | 5138.9 | 9136.0 | 8259.5 | 10793.7 | 2.2 | 12.6 | 16.9 |
| May | 8021.0 | 9889.5 | 7011.2 | 7771.6 | 4058.3 | 15165.8 | 5576.4 | 4675.6 | 9389.6 | 8217.4 | 10940.2 | 0.1 | 10.6 | 16.4 |
| Jun | 8005.4 | 9649.4 | 7067.9 | 7783.3 | 4179.1 | 15569.5 | 5687.2 | 4708.2 | 9349.5 | 8477.3 | 11737.9 | -0.2 | 8.5 | 15.5 |
| Jul | 8166.1 | 9679.4 | 7228.6 | 8169.8 | 4440.9 | 14972.0 | 5589.2 | 4429.5 | 9242.8 | 9221.7 | 11306.5 | 2.0 | 3.0 | 13.5 |
| Aug | 8425.4 | 9715.4 | 7616.0 | 8409.9 | 4437.6 | 15246.5 | 5670.2 | 5117.1 | 9396.2 | 9404.3 | 12218.2 | 3.2 | 3.7 | 11.4 |
| Sep | 8477.2 | 9643.4 | 7753.0 | 8603.2 | 4511.4 | 15222.3 | 5764.0 | 5218.5 | 9903.4 | 9706.4 | 11819.3 | 0.6 | 6.2 | 10.0 |
| Oct | 8264.7 | 9475.4 | 7530.9 | 8450.9 | 4783.3 | 14915.4 | 5653.1 | 5482.6 | 9930.1 | 11167.2 | 11770.5 | -2.5 | 6.1 | 9.0 |
| Nov | 8207.6 | 9595.4 | 7365.6 | 8778.9 | 4659.1 | 14955.8 | 5845.0 | 5453.7 | 10083.6 | 10408.7 | 12291.4 | -0.7 | 7.8 | 8.5 |
| Dec | 8145.4 | 9943.5 | 7072.7 | 8901.9 | 4900.8 | 15101.2 | 6096.5 | 5508.0 | 10730.9 | 9959.2 | 12462.4 | -0.8 | 8.6 | 8.2 |
| 2007 Jan | 8109.1 | 10261.5 | 6831.7 | 8474.4 | 4696.0 | 15513.0 | 6058.1 | 5381.3 | 11238.1 | 10036.5 | 12934.5 | -0.4 | 7.9 | 8.0 |
| Feb | 8171.3 | 10027.5 | 7044.3 | 8737.9 | 4753.1 | 15133.5 | 5870.5 | 5308.9 | 11471.7 | 9874.9 | 11225.1 | 0.8 | 7.1 | 7.7 |
| Mar | 8254.3 | 10201.5 | 7091.6 | 8796.5 | 4732.9 | 15908.7 | 6224.4 | 5146.1 | 10771.0 | 9523.7 | 13488.0 | 1.0 | 5.2 | 7.2 |
| Apr | 8352.8 | 10285.5 | 7153.0 | 8884.3 | 4833.6 | 16062.1 | 6186.0 | 4990.5 | 10804.3 | 9544.8 | 13805.5 | 1.2 | 4.2 | 6.5 |
| May | 8394.3 | 10345.5 | 7176.6 | 8907.7 | 4642.3 | 16465.9 | 6339.5 | 4838.5 | 11531.8 | 9748.5 | 13512.4 | 0.5 | 4.7 | 6.0 |
| Jun | 8518.7 | 10579.6 | 7294.7 | 9200.6 | 4541.6 | 16716.3 | 6066.6 | 4918.1 | 11918.8 | 10148.8 | 12381.0 | 1.5 | 6.4 | 5.9 |
| Jul | 8560.2 | 10639.6 | 7308.9 | 9130.3 | 4655.7 | 17103.9 | 6164.7 | 4881.9 | 11351.6 | 10141.8 | 12551.9 | 0.5 | 4.8 | 6.0 |
| Aug | 8783.1 | 10807.6 | 7526.2 | 9446.5 | 4662.5 | 17394.6 | 6254.2 | 5413.9 | 11411.6 | 10226.1 | 12747.3 | 2.6 | 4.2 | 6.1 |
| Sep | 8824.6 | 10651.6 | 7691.6 | 9499.2 | 4696.0 | 17136.2 | 6207.3 | 5182.3 | 11691.9 | 10057.5 | 13211.3 | 0.5 | 4.1 | 5.9 |
| Oct | 8643.1 | 10489.6 | 7526.2 | 9276.7 | 4813.5 | 16764.7 | 6271.3 | 5475.4 | 11191.4 | 10148.8 | 12706.6 | -2.1 | 4.6 | 5.7 |
| Nov | 8632.8 | 10303.5 | 7597.1 | 9247.4 | 4790.0 | 16304.4 | 6429.0 | 5193.1 | 11438.3 | 10155.9 | 12201.9 | -0.1 | 5.2 | 5.5 |
| Dec | 8679.4 | 10297.5 | 7655.7 | 9200.6 | 4793.4 | 16377.1 | 6262.8 | 5150.8 | 11485.7 | 9923.4 | 12507.2 | 0.5 | 6.6 | 5.4 |
| 2008 Jan | 8803.9 | 10522.6 | 7695.8 | 9431.3 | 4782.3 | 16563.6 | 6297.7 | 5126.9 | 11073.3 | 10202.2 | 12716.4 | 1.4 | 8.6 | 5.5 |
| Feb | 8829.8 | 10669.6 | 7658.5 | 9340.5 | 4796.7 | 16684.0 | 6318.2 | 5095.4 | 11304.9 | 10001.3 | 12674.0 | 0.3 | 8.1 | 5.5 |
| Mar | 8897.2 | 10255.5 | 7970.3 | 9569.5 | 4716.2 | 16296.3 | 6480.2 | 5261.9 | 10797.7 | 10141.8 | 12291.4 | 0.8 | 7.8 | 5.8 |
| Apr | 9037.2 | 10435.5 | 8093.2 | 9528.5 | 4954.5 | 16514.4 | 6569.7 | 5468.2 | 11338.2 | 10099.7 | 12470.5 | 1.6 | 8.2 | 6.1 |

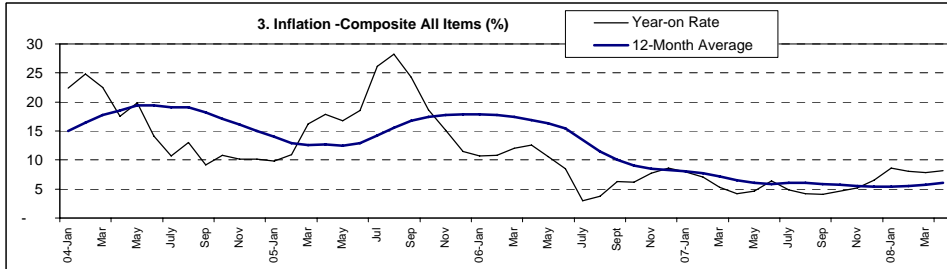


Table 3 Urban Consumer Price Index (Base May 2003 = 100)

| | All Items | All Items less Farm Produce | All Items less Farm Produce and Energy | Food | Food & Non Alcoholic Bev. | Alcoholic Beverage, Tobacco and Kola | Clothing and Footwear | Housing Water, Electricity, Gas and Other Fuel | Furnishings & Household Equipment Maintenance | Health | Transport | Communication | Recreation & Culture | Education | Restaurant & Hotels | Miscellaneous Goods & Services | Month-on (%) | Year-on (%) | 12-month average (%) | |
|----------------|-----------|-----------------------------|--|--------|---------------------------|--------------------------------------|-----------------------|--|---|--------|-----------|---------------|----------------------|-----------|---------------------|--------------------------------|--------------|-------------|----------------------|------|
| Weights | 1000 | 425.6 | 335.9 | 626.5 | 634.5 | 13.1 | 36.2 | 172.8 | 44.6 | 8.7 | 50.3 | 1.5 | 13.3 | 3.3 | 18.8 | 2.9 | | | | |
| 2004 | Jan | 119.2 | 130.3 | 122.6 | 111.7 | 111.6 | 107.8 | 158.9 | 137.4 | 114.8 | 115.5 | 130.4 | 100.5 | 100.9 | 163.1 | 116.9 | 119.0 | 1.5 | 23.5 | 17.7 |
| | Feb | 120.0 | 130.9 | 123.0 | 112.5 | 112.4 | 109.1 | 165.0 | 136.9 | 117.4 | 174.8 | 125.4 | 100.4 | 99.3 | 170.9 | 111.9 | 119.6 | 0.7 | 26.4 | 19.3 |
| | Mar | 123.4 | 135.0 | 125.8 | 115.6 | 115.4 | 109.8 | 161.2 | 142.1 | 118.2 | 175.4 | 136.4 | 100.5 | 100.4 | 166.8 | 108.8 | 121.1 | 2.8 | 31.1 | 21.4 |
| | Apr | 121.8 | 127.7 | 118.7 | 118.1 | 117.9 | 111.1 | 104.9 | 137.8 | 112.1 | 116.9 | 129.1 | 100.6 | 106.1 | 154.7 | 126.4 | 118.8 | -1.3 | 23.9 | 22.6 |
| | May | 122.8 | 122.5 | 116.4 | 124.0 | 123.7 | 113.4 | 105.7 | 126.9 | 116.4 | 110.8 | 121.4 | 108.1 | 110.2 | 166.5 | 103.9 | 121.6 | 0.8 | 22.8 | 23.7 |
| | June | 123.9 | 128.3 | 117.6 | 121.4 | 121.2 | 112.6 | 109.6 | 138.8 | 115.5 | 106.9 | 123.0 | 115.8 | 111.1 | 166.1 | 121.0 | 122.2 | 0.9 | 16.7 | 23.7 |
| | July | 123.8 | 128.0 | 118.4 | 120.2 | 120.0 | 107.8 | 113.1 | 144.8 | 120.4 | 109.6 | 111.3 | 153.4 | 107.5 | 154.3 | 116.3 | 125.8 | -0.1 | 9.3 | 22.7 |
| | Aug | 126.3 | 128.5 | 119.4 | 124.1 | 123.9 | 123.9 | 114.4 | 142.2 | 119.3 | 115.6 | 113.7 | 236.0 | 117.3 | 157.0 | 114.6 | 131.3 | 2.0 | 12.2 | 21.7 |
| | Sep | 127.5 | 132.0 | 121.2 | 123.5 | 123.4 | 116.9 | 111.9 | 151.5 | 119.8 | 115.7 | 110.2 | 247.3 | 111.5 | 152.7 | 125.1 | 134.3 | 1.0 | 8.8 | 20.4 |
| | Oct | 130.3 | 136.7 | 123.5 | 125.3 | 125.1 | 118.5 | 114.2 | 159.9 | 118.3 | 115.4 | 111.0 | 245.4 | 110.1 | 157.0 | 126.8 | 133.9 | 2.2 | 12.2 | 19.3 |
| | Nov | 133.5 | 142.4 | 126.4 | 127.0 | 126.8 | 118.7 | 120.1 | 168.5 | 123.1 | 114.1 | 112.8 | 244.9 | 108.6 | 163.5 | 127.7 | 131.3 | 2.5 | 11.5 | 17.9 |
| | Dec | 131.3 | 137.8 | 122.4 | 126.5 | 126.3 | 115.5 | 113.0 | 159.1 | 115.5 | 112.6 | 115.0 | 245.5 | 120.7 | 162.8 | 132.7 | 141.1 | -1.7 | 11.8 | 16.9 |
| 2005 | Jan | 135.9 | 142.0 | 125.7 | 131.4 | 131.2 | 117.3 | 119.2 | 164.9 | 121.4 | 116.9 | 114.8 | 245.5 | 112.9 | 155.9 | 140.5 | 138.8 | 3.5 | 14.0 | 16.1 |
| | Feb | 137.3 | 136.7 | 126.5 | 137.0 | 136.7 | 117.5 | 121.9 | 151.4 | 125.3 | 113.1 | 119.7 | 251.7 | 112.3 | 150.4 | 143.4 | 132.2 | 1.0 | 14.4 | 15.3 |
| | Mar | 139.8 | 141.3 | 128.2 | 137.8 | 137.5 | 120.7 | 119.8 | 161.0 | 127.6 | 111.7 | 118.3 | 241.8 | 113.5 | 153.2 | 146.6 | 129.5 | 1.8 | 13.3 | 14.0 |
| | Apr | 141.9 | 144.2 | 133.2 | 139.4 | 139.1 | 121.7 | 124.8 | 163.6 | 130.6 | 122.4 | 118.6 | 241.8 | 121.2 | 156.3 | 153.1 | 132.5 | 1.5 | 16.5 | 13.5 |
| | May | 146.9 | 147.5 | 135.4 | 145.3 | 144.9 | 124.5 | 126.7 | 169.3 | 131.5 | 134.9 | 119.4 | 241.8 | 119.0 | 170.1 | 148.9 | 134.8 | 3.5 | 19.6 | 13.4 |
| | Jun | 151.0 | 147.0 | 138.8 | 151.8 | 151.4 | 122.2 | 131.8 | 164.4 | 129.9 | 126.4 | 132.3 | 258.3 | 122.0 | 171.7 | 156.1 | 146.9 | 2.8 | 21.9 | 13.9 |
| | Jul | 155.3 | 146.2 | 138.3 | 159.1 | 158.6 | 120.7 | 130.9 | 163.4 | 131.0 | 131.9 | 134.7 | 244.1 | 119.8 | 169.2 | 145.6 | 147.1 | 2.8 | 25.5 | 15.2 |
| | Aug | 157.1 | 142.1 | 136.5 | 164.7 | 164.2 | 126.1 | 128.5 | 155.1 | 132.6 | 131.6 | 128.3 | 242.0 | 122.2 | 181.2 | 147.7 | 145.8 | 1.2 | 24.4 | 16.3 |
| | Sep | 156.2 | 143.8 | 139.3 | 162.8 | 162.2 | 131.0 | 121.9 | 158.8 | 137.4 | 135.2 | 129.2 | 241.8 | 119.8 | 187.3 | 133.2 | 147.6 | -0.6 | 22.5 | 17.4 |
| | Oct | 153.9 | 145.6 | 138.5 | 157.8 | 157.2 | 132.9 | 123.5 | 161.7 | 138.4 | 134.0 | 130.9 | 241.8 | 120.3 | 186.4 | 139.0 | 146.3 | -1.5 | 18.1 | 17.9 |
| | Nov | 153.5 | 142.9 | 134.5 | 159.8 | 159.3 | 130.0 | 118.8 | 154.6 | 129.6 | 139.6 | 132.1 | 241.8 | 116.8 | 186.1 | 135.6 | 143.0 | -0.3 | 14.9 | 18.1 |
| | Dec | 155.5 | 142.7 | 133.4 | 162.9 | 162.4 | 133.5 | 120.7 | 155.4 | 132.3 | 141.0 | 129.7 | 241.8 | 124.7 | 182.5 | 124.3 | 156.0 | 1.3 | 18.4 | 18.6 |
| 2006 | Jan | 153.1 | 146.0 | 137.9 | 157.6 | 157.1 | 136.8 | 117.7 | 157.0 | 134.2 | 138.0 | 139.9 | 241.8 | 126.1 | 184.4 | 124.8 | 150.2 | -1.6 | 12.6 | 18.5 |
| | Feb | 158.6 | 159.0 | 140.9 | 156.9 | 156.4 | 132.9 | 122.5 | 190.5 | 134.3 | 145.7 | 130.3 | 241.8 | 115.1 | 178.3 | 131.0 | 138.2 | 3.6 | 15.5 | 18.5 |
| | Mar | 160.4 | 164.8 | 143.1 | 156.3 | 155.8 | 135.1 | 124.2 | 200.9 | 139.1 | 142.4 | 132.1 | 241.8 | 115.1 | 179.4 | 131.9 | 136.2 | 1.2 | 14.8 | 18.6 |
| | Apr | 161.6 | 165.9 | 148.2 | 158.0 | 157.5 | 136.0 | 127.9 | 199.3 | 142.4 | 141.3 | 134.7 | 241.8 | 115.7 | 184.1 | 128.2 | 142.4 | 0.7 | 13.9 | 18.3 |
| | May | 161.9 | 166.5 | 153.0 | 159.1 | 158.6 | 136.9 | 129.5 | 197.0 | 143.9 | 134.2 | 135.0 | 241.8 | 112.5 | 193.1 | 122.8 | 144.2 | 0.2 | 10.2 | 17.5 |
| | Jun | 163.9 | 170.7 | 157.9 | 159.4 | 159.0 | 137.3 | 132.2 | 204.9 | 144.6 | 135.1 | 137.5 | 241.8 | 118.9 | 181.5 | 123.5 | 144.0 | 1.2 | 8.5 | 16.3 |
| | Jul | 166.3 | 164.7 | 152.7 | 165.0 | 164.5 | 146.2 | 137.9 | 192.6 | 140.6 | 125.5 | 134.9 | 241.8 | 148.4 | 189.6 | 163.0 | 148.8 | 1.5 | 7.1 | 14.8 |
| | Aug | 171.2 | 168.8 | 153.2 | 170.5 | 169.9 | 154.7 | 138.2 | 195.1 | 146.0 | 132.3 | 139.1 | 241.8 | 153.8 | 207.7 | 177.3 | 149.3 | 2.9 | 9.0 | 13.5 |
| | Sep | 171.2 | 171.9 | 154.8 | 168.0 | 167.5 | 152.6 | 147.2 | 198.8 | 148.7 | 138.7 | 143.3 | 241.8 | 165.4 | 212.0 | 184.4 | 148.2 | 0.0 | 9.6 | 12.5 |
| | Oct | 171.7 | 175.0 | 157.9 | 166.8 | 166.4 | 152.3 | 150.5 | 203.4 | 147.7 | 146.6 | 148.0 | 241.8 | 166.4 | 197.9 | 181.5 | 153.6 | 0.3 | 11.5 | 12.0 |
| | Nov | 170.8 | 176.4 | 160.1 | 164.3 | 164.0 | 160.1 | 147.9 | 204.6 | 148.5 | 155.8 | 151.8 | 248.5 | 165.4 | 201.1 | 189.2 | 158.5 | -0.5 | 11.3 | 11.7 |
| | Dec | 171.6 | 176.0 | 163.2 | 166.4 | 166.0 | 162.5 | 151.5 | 198.5 | 151.2 | 159.0 | 159.3 | 238.8 | 153.2 | 205.7 | 195.7 | 164.0 | 0.4 | 10.3 | 11.1 |
| 2007 | Jan | 171.3 | 178.2 | 164.2 | 164.6 | 164.3 | 172.1 | 149.5 | 201.0 | 150.1 | 154.3 | 168.1 | 241.9 | 148.5 | 221.4 | 197.8 | 159.5 | -0.1 | 11.9 | 11.0 |
| | Feb | 173.1 | 178.2 | 165.3 | 167.8 | 167.5 | 172.7 | 151.2 | 199.4 | 149.8 | 151.5 | 167.5 | 240.0 | 143.7 | 229.5 | 197.3 | 154.3 | 1.1 | 9.2 | 10.5 |
| | Mar | 178.4 | 183.0 | 171.0 | 172.6 | 172.2 | 168.8 | 151.3 | 213.9 | 153.5 | 149.7 | 159.0 | 241.4 | 140.7 | 218.4 | 189.2 | 188.7 | 3.1 | 11.2 | 10.3 |
| | Apr | 179.7 | 183.2 | 171.0 | 174.5 | 174.0 | 170.7 | 151.2 | 214.4 | 156.3 | 145.0 | 157.6 | 241.8 | 142.7 | 238.7 | 194.0 | 189.4 | 0.7 | 11.2 | 10.1 |
| | May | 182.0 | 190.8 | 176.8 | 173.3 | 173.1 | 174.2 | 142.5 | 227.1 | 158.2 | 134.9 | 176.8 | 241.9 | 141.9 | 236.7 | 181.2 | 179.1 | 1.3 | 12.4 | 10.3 |
| | Jun | 183.5 | 190.1 | 174.4 | 175.6 | 175.4 | 173.2 | 141.5 | 223.0 | 161.9 | 143.6 | 174.2 | 241.8 | 148.6 | 235.7 | 211.6 | 167.9 | 0.8 | 12.0 | 10.6 |
| | Jul | 184.0 | 194.6 | 177.2 | 173.6 | 173.3 | 171.4 | 144.2 | 231.9 | 164.2 | 145.4 | 173.8 | 241.8 | 151.5 | 253.8 | 213.0 | 168.3 | 0.3 | 10.7 | 10.9 |
| | Aug | 188.4 | 197.1 | 180.2 | 178.8 | 178.5 | 178.2 | 147.2 | 235.2 | 168.1 | 149.9 | 173.1 | 242.6 | 151.6 | 253.4 | 218.9 | 171.4 | 2.4 | 10.1 | 11.0 |
| | Sep | 186.9 | 196.32 | 180.23 | 176.9 | 176.62 | 177.55 | 146.24 | 233.01 | 166.3 | 152.05 | 176.3 | 241.8 | 150.9 | 243.18 | 221.7 | 173.35 | -0.8 | 9.1 | 10.9 |
| | Oct | 186.1 | 196.5 | 184.9 | 175.8 | 175.5 | 176.6 | 149.2 | 230.0 | 169.3 | 160.4 | 179.4 | 241.8 | 148.7 | 265.1 | 224.2 | 177.1 | -0.4 | 8.4 | 10.6 |
| | Nov | 188.6 | 198.5 | 186.7 | 178.7 | 178.4 | 177.5 | 154.3 | 230.9 | 170.8 | 162.4 | 180.9 | 241.8 | 149.4 | 262.1 | 231.1 | 179.9 | 1.3 | 10.4 | 10.6 |
| | Dec | 191.4 | 201.3 | 188.7 | 181.4 | 181.2 | 178.8 | 157.6 | 234.3 | 172.7 | 162.5 | 184.6 | 247.5 | 151.8 | 255.9 | 230.7 | 179.8 | 1.5 | 11.6 | 10.7 |
| 2008 | Jan | 193.1 | 199.5 | 190.0 | 185.8 | 185.6 | 179.9 | 153.7 | 233.0 | 172.3 | 162.4 | 173.7 | 247.6 | 152.3 | 265.4 | 232.7 | 179.9 | 0.9 | 12.7 | 10.7 |
| | Feb | 195.9 | 201.8 | 191.6 | 188.9 | 188.6 | 181.2 | 156.0 | 236.6 | 173.2 | 164.0 | 173.1 | 247.6 | 153.6 | 257.4 | 232.8 | 181.7 | 1.4 | 13.1 | 11.1 |
| | Mar | 196.3 | 202.4 | 192.5 | 189.4 | 189.1 | 182.9 | 154.8 | 235.5 | 173.3 | 168.1 | 172.3 | 247.6 | 152.6 | 254.3 | 245.5 | 183.6 | 0.2 | 10.1 | 11.0 |
| | Apr | 199.6 | 205.3 | 195.6 | 193.0 | 192.7 | 186.7 | 156.6 | 239.0 | 175.6 | 173.7 | 173.2 | 247.7 | 155.3 | 253.1 | 246.7 | 186.2 | 1.7 | 11.1 | 11.0 |

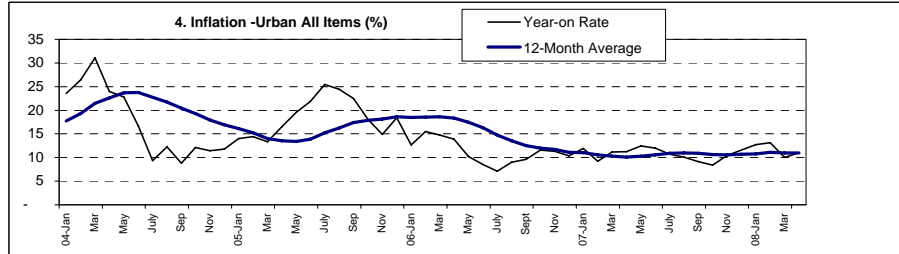


Table 4 Rural Consumer Price Index (Base MAY 2003 = 100)

| | All Items | All Items less Farm Produce | All Items less Farm Produce and Energy | Food | Food & Non-Alcoholic Bev. | Alcoholic Beverage, Tobacco and Kola | Clothing and Footwear | Electricity, Gas and Other Fuel | Housing, Water, and Telephone | Health | Household Equipment and Maintenance | Furnishings & Household Equipment | Transport | Communication | Recreation & Culture | Education | Restaurant & Hotels | Miscellaneous Goods & Services | Month-on (%) | Year-on (%) | 12-month average (%) |
|----------------|------------|-----------------------------|--|-------|---------------------------|--------------------------------------|-----------------------|---------------------------------|-------------------------------|--------|-------------------------------------|-----------------------------------|-----------|---------------|----------------------|-----------|---------------------|--------------------------------|--------------|-------------|----------------------|
| Weights | 1000.0 | 402.6 | 335.9 | 640.1 | 648.3 | 23.9 | 30.4 | 184.5 | 35.5 | 15.7 | 39.0 | 0.9 | 7.1 | 1.6 | 10.3 | 3.0 | | | | | |
| 2004 | Jan 119.1 | 136.7 | 122.4 | 109.0 | 109.3 | 108.1 | 112.3 | 141.5 | 106.8 | 135.2 | 115.8 | 107.7 | 181.7 | 153.0 | 120.6 | 152.3 | 0.9 | 22.1 | 14.1 | | |
| | Feb 119.6 | 138.3 | 122.5 | 109.2 | 109.6 | 109.6 | 110.8 | 147.2 | 104.5 | 132.7 | 112.4 | 107.9 | 175.8 | 122.5 | 123.0 | 166.2 | 0.4 | 24.5 | 15.5 | | |
| | Mar 113.0 | 127.1 | 128.2 | 105.6 | 106.0 | 108.6 | 108.9 | 130.0 | 110.2 | 130.8 | 115.6 | 108.1 | 179.7 | 130.1 | 124.5 | 154.1 | -5.5 | 19.0 | 16.6 | | |
| | Apr 114.1 | 120.4 | 115.7 | 110.7 | 111.1 | 106.0 | 111.0 | 126.3 | 105.2 | 129.6 | 116.2 | 108.0 | 118.2 | 115.4 | 106.0 | 125.1 | 1.0 | 15.0 | 17.1 | | |
| | May 118.5 | 123.8 | 118.0 | 116.2 | 116.4 | 109.5 | 111.1 | 128.0 | 104.6 | 125.8 | 110.2 | 125.3 | 117.2 | 111.4 | 117.4 | 122.8 | 3.8 | 18.5 | 17.9 | | |
| | June 118.3 | 119.0 | 118.5 | 118.6 | 118.6 | 108.3 | 108.5 | 124.5 | 106.7 | 115.3 | 109.9 | 132.3 | 117.0 | 103.8 | 116.1 | 115.2 | -0.1 | 13.0 | 17.8 | | |
| | July 120.1 | 128.3 | 118.4 | 116.1 | 116.3 | 110.5 | 111.1 | 131.9 | 114.5 | 123.1 | 127.3 | 201.8 | 113.7 | 100.1 | 117.7 | 126.3 | 1.5 | 11.3 | 17.8 | | |
| | Aug 120.4 | 125.2 | 122.1 | 117.5 | 117.6 | 119.0 | 114.9 | 133.9 | 112.6 | 119.2 | 132.5 | 196.6 | 114.2 | 107.7 | 113.7 | 116.6 | 0.3 | 13.4 | 18.1 | | |
| | Sep 122.2 | 124.5 | 122.1 | 121.0 | 121.1 | 110.3 | 115.5 | 134.1 | 109.7 | 112.7 | 124.8 | 221.6 | 117.2 | 121.3 | 115.0 | 119.2 | 1.4 | 9.3 | 17.4 | | |
| | Oct 125.0 | 130.5 | 123.7 | 121.2 | 121.4 | 121.4 | 115.5 | 143.4 | 115.8 | 118.4 | 124.1 | 237.3 | 119.9 | 118.2 | 113.1 | 127.5 | 2.3 | 10.1 | 16.3 | | |
| | Nov 125.0 | 129.7 | 126.5 | 122.5 | 122.6 | 112.0 | 116.3 | 143.4 | 110.9 | 119.6 | 125.9 | 237.9 | 118.7 | 128.8 | 116.2 | 125.3 | 0.0 | 9.4 | 15.4 | | |
| | Dec 129.1 | 138.1 | 123.1 | 124.2 | 124.4 | 112.9 | 109.7 | 153.7 | 114.4 | 110.3 | 116.6 | 237.8 | 117.3 | 102.8 | 118.4 | 126.6 | 3.3 | 9.3 | 14.2 | | |
| 2005 | Jan 128.7 | 135.4 | 123.1 | 124.6 | 124.7 | 118.4 | 112.3 | 152.9 | 112.2 | 120.2 | 120.9 | 221.2 | 123.5 | 129.7 | 120.6 | 123.7 | -0.3 | 8.0 | 13.1 | | |
| | Feb 130.8 | 135.0 | 126.5 | 128.6 | 128.7 | 114.2 | 112.8 | 147.6 | 115.5 | 121.1 | 115.1 | 238.2 | 117.8 | 129.4 | 120.9 | 132.9 | 1.7 | 9.4 | 11.9 | | |
| | Mar 132.9 | 131.2 | 128.3 | 134.2 | 134.1 | 116.1 | 115.5 | 145.0 | 116.4 | 123.8 | 105.8 | 233.9 | 119.5 | 122.3 | 122.6 | 130.5 | 1.6 | 17.7 | 11.9 | | |
| | Apr 135.3 | 137.5 | 133.2 | 134.0 | 134.0 | 115.7 | 113.0 | 155.9 | 115.3 | 124.1 | 131.4 | 237.3 | 118.0 | 133.1 | 126.3 | 137.5 | 1.8 | 18.6 | 12.2 | | |
| | May 136.9 | 142.4 | 135.5 | 133.9 | 133.9 | 120.4 | 113.3 | 158.4 | 124.3 | 120.4 | 132.7 | 237.3 | 123.9 | 133.1 | 126.8 | 129.7 | 1.2 | 15.6 | 12.1 | | |
| | Jun 138.5 | 139.2 | 139.4 | 137.3 | 137.3 | 117.3 | 113.5 | 150.9 | 124.0 | 121.8 | 123.7 | 232.3 | 123.4 | 134.6 | 129.2 | 133.4 | 1.2 | 17.1 | 12.4 | | |
| | Jul 151.8 | 140.2 | 138.4 | 158.7 | 158.4 | 125.2 | 115.2 | 156.1 | 130.9 | 123.4 | 128.1 | 243.4 | 114.1 | 124.7 | 124.8 | 126.0 | 9.6 | 26.4 | 13.7 | | |
| | Aug 156.5 | 141.2 | 137.4 | 165.0 | 164.4 | 119.9 | 114.8 | 157.3 | 134.1 | 123.6 | 128.5 | 235.0 | 116.1 | 123.9 | 130.4 | 132.6 | 3.1 | 29.9 | 15.1 | | |
| | Sep 152.9 | 145.9 | 139.9 | 155.7 | 155.6 | 121.5 | 111.0 | 161.7 | 121.1 | 124.7 | 119.6 | 207.5 | 124.8 | 126.8 | 135.3 | 139.2 | -2.3 | 25.1 | 16.5 | | |
| | Oct 148.6 | 144.6 | 140.8 | 150.5 | 150.3 | 118.5 | 117.1 | 162.5 | 124.6 | 123.0 | 138.7 | 192.7 | 120.6 | 120.0 | 141.0 | 128.4 | -2.8 | 18.8 | 17.2 | | |
| | Nov 144.0 | 142.5 | 136.8 | 144.1 | 144.0 | 122.5 | 122.8 | 159.3 | 126.2 | 128.8 | 125.3 | 212.7 | 118.1 | 112.2 | 141.3 | 147.3 | -3.1 | 15.2 | 17.6 | | |
| | Dec 140.0 | 140.7 | 134.4 | 138.2 | 137.9 | 123.7 | 104.9 | 161.0 | 128.2 | 136.5 | 130.2 | 206.1 | 116.1 | 131.9 | 120.4 | 135.2 | -2.8 | 8.5 | 17.5 | | |
| 2006 | Jan 141.3 | 142.1 | 138.6 | 140.7 | 140.7 | 128.1 | 112.9 | 157.9 | 125.4 | 136.8 | 143.4 | 156.8 | 121.4 | 136.5 | 120.1 | 143.1 | 0.9 | 9.8 | 17.6 | | |
| | Feb 142.3 | 146.8 | 141.8 | 140.3 | 140.4 | 126.8 | 120.8 | 165.4 | 128.5 | 148.9 | 133.1 | 210.4 | 113.6 | 120.1 | 120.8 | 139.1 | 0.7 | 8.7 | 17.5 | | |
| | Mar 147.3 | 152.4 | 143.7 | 144.8 | 144.9 | 123.8 | 114.3 | 171.3 | 124.1 | 152.5 | 138.5 | 211.3 | 115.6 | 119.0 | 130.5 | 120.9 | 3.5 | 10.8 | 16.9 | | |
| | Apr 151.6 | 161.2 | 148.6 | 145.3 | 145.1 | 124.7 | 120.0 | 183.1 | 124.2 | 142.6 | 140.7 | 208.4 | 118.9 | 103.6 | 128.3 | 125.4 | 2.9 | 12.0 | 16.3 | | |
| | May 151.6 | 164.0 | 154.0 | 145.0 | 145.1 | 128.0 | 111.9 | 178.3 | 122.9 | 125.3 | 150.8 | 197.4 | 120.0 | 106.3 | 129.3 | 127.2 | 0.0 | 10.7 | 15.8 | | |
| | Jun 150.3 | 156.6 | 159.0 | 146.4 | 146.3 | 127.9 | 116.5 | 180.3 | 126.7 | 126.1 | 144.8 | 202.4 | 121.9 | 116.0 | 132.8 | 144.4 | -0.9 | 8.5 | 15.1 | | |
| | Jul 153.6 | 159.8 | 162.3 | 149.1 | 149.0 | 132.1 | 126.5 | 184.0 | 125.5 | 120.0 | 145.0 | 209.6 | 119.8 | 109.0 | 134.4 | 131.6 | 2.2 | 1.2 | 12.9 | | |
| | Aug 158.8 | 159.0 | 153.6 | 158.2 | 158.1 | 131.3 | 126.0 | 182.3 | 125.3 | 148.7 | 143.6 | 209.3 | 120.7 | 119.0 | 136.4 | 150.6 | 3.3 | 1.5 | 10.5 | | |
| | Sep 160.1 | 155.8 | 155.2 | 162.9 | 162.5 | 140.7 | 121.1 | 177.9 | 127.1 | 148.5 | 157.6 | 211.7 | 120.2 | 133.7 | 134.8 | 143.1 | 0.9 | 4.7 | 8.9 | | |
| | Oct 154.1 | 150.5 | 158.6 | 157.0 | 156.8 | 135.6 | 134.1 | 165.5 | 123.5 | 155.3 | 150.4 | 207.9 | 154.1 | 154.0 | 168.0 | 137.9 | -3.8 | 3.7 | 7.7 | | |
| | Nov 152.9 | 152.8 | 161.4 | 153.2 | 153.2 | 138.7 | 129.3 | 165.3 | 130.3 | 146.6 | 149.8 | 209.2 | 136.8 | 138.7 | 153.6 | 145.4 | -0.8 | 6.1 | 7.0 | | |
| | Dec 150.8 | 161.3 | 165.0 | 144.4 | 144.3 | 140.5 | 140.4 | 175.1 | 138.2 | 146.8 | 163.5 | 211.7 | 134.2 | 121.0 | 175.7 | 145.0 | -1.3 | 7.7 | 6.9 | | |
| 2007 | Jan 149.9 | 167.9 | 153.4 | 138.2 | 138.4 | 137.7 | 129.8 | 182.9 | 137.3 | 144.3 | 169.0 | 213.5 | 139.2 | 129.6 | 162.2 | 158.5 | -0.6 | 6.1 | 6.6 | | |
| | Feb 150.9 | 162.3 | 149.4 | 143.2 | 143.4 | 140.2 | 131.6 | 175.1 | 130.4 | 143.0 | 179.9 | 219.8 | 138.5 | 124.3 | 177.7 | 125.8 | 0.7 | 6.1 | 6.4 | | |
| | Mar 150.9 | 164.4 | 152.7 | 142.9 | 143.1 | 157.7 | 130.3 | 179.5 | 141.5 | 136.3 | 165.8 | 206.4 | 132.2 | 136.6 | 170.5 | 148.6 | 0.0 | 2.5 | 5.8 | | |
| | Apr 153.0 | 166.3 | 152.5 | 144.1 | 144.6 | 144.8 | 136.5 | 183.1 | 138.4 | 132.3 | 169.7 | 210.9 | 131.3 | 129.3 | 173.7 | 155.0 | 1.4 | 1.0 | 4.9 | | |
| | May 153.2 | 164.5 | 149.7 | 145.1 | 145.5 | 139.5 | 133.9 | 180.1 | 143.1 | 132.7 | 165.7 | 213.2 | 136.7 | 122.5 | 191.4 | 156.3 | 0.1 | 1.0 | 4.1 | | |
| | Jun 156.0 | 170.4 | 151.2 | 147.6 | 147.9 | 139.4 | 128.8 | 190.4 | 130.5 | 129.9 | 186.5 | 209.0 | 141.8 | 122.8 | 201.3 | 140.4 | 1.9 | 3.8 | 3.7 | | |
| | Jul 156.9 | 169.9 | 150.8 | 148.7 | 149.1 | 138.8 | 133.0 | 191.2 | 132.8 | 126.6 | 163.5 | 209.6 | 139.7 | 127.1 | 208.3 | 143.7 | 0.5 | 2.1 | 3.8 | | |
| | Aug 161.1 | 172.8 | 154.3 | 153.0 | 153.4 | 142.8 | 130.2 | 195.1 | 133.8 | 149.4 | 167.2 | 210.0 | 141.6 | 122.3 | 193.0 | 145.6 | 2.7 | 1.5 | 3.8 | | |
| | Sep 163.0 | 169.4 | 152.4 | 158.4 | 158.7 | 145.3 | 133.3 | 190.8 | 133.3 | 136.1 | 173.0 | 192.3 | 138.2 | 109.6 | 187.1 | 154.1 | 1.2 | 1.8 | 3.5 | | |
| | Oct 158.2 | 165.4 | 144.9 | 154.0 | 154.4 | 138.4 | 137.3 | 184.6 | 133.8 | 144.2 | 147.0 | 154.4 | 141.7 | 129.8 | 202.7 | 140.4 | -2.9 | 2.7 | 3.4 | | |
| | Nov 156.9 | 160.0 | 139.9 | 155.2 | 155.7 | 136.4 | 130.4 | 172.1 | 138.8 | 128.5 | 154.5 | 211.0 | 141.5 | 135.7 | 203.9 | 127.6 | -0.9 | 2.6 | 3.2 | | |
| | Dec 157.0 | 158.9 | 138.6 | 155.9 | 156.4 | 133.4 | 127.2 | 170.3 | 131.5 | 126.4 | 149.9 | 207.0 | 134.3 | 129.5 | 213.6 | 134.3 | 0.1 | 4.1 | 2.9 | | |
| 2008 | Jan 159.7 | 164.9 | 145.3 | 155.6 | 156.0 | 140.4 | 130.7 | 176.4 | 133.0 | 125.3 | 152.0 | 157.7 | 140.6 | 127.6 | 200.4 | 138.6 | 1.7 | 6.5 | 2.9 | | |
| | Feb 159.2 | 167.4 | 152.2 | 153.5 | 154.0 | 135.6 | 129.2 | 175.8 | 133.3 | 122.5 | 162.8 | 156.7 | 135.0 | 133.6 | 207.3 | 136.4 | -0.3 | 5.5 | 2.9 | | |
| | Mar 160.9 | 157.3 | 140.3 | 162.2 | 162.5 | 142.0 | 125.5 | 167.1 | 139.2 | 127.5 | 143.0 | 152.4 | 138.9 | 133.2 | 204.6 | 126.9 | 1.1 | 6.6 | 3.2 | | |
| | Apr 163.3 | 159.7 | 145.2 | 164.4 | 164.8 | 136.4 | 138.1 | 168.9 | 141.1 | 133.2 | 164.0 | 204.0 | 136.2 | 129.2 | 218.2</ | | | | | | |

**Table 5 Combined Urban And Rural State Consumer Price Index
(Base Period: May 2003 = 100)**

| State | Apr-07 | | Mar-08 | | Apr-08 | |
|-------------|--------|-----------|--------|-----------|--------|-----------|
| | Food | All Items | Food | All Items | Food | All Items |
| Abia | 157.4 | 176.8 | 194.0 | 193.2 | 167.0 | 178.2 |
| Abuja | 149.0 | 157.1 | 177.6 | 176.4 | 182.1 | 181.7 |
| Adamawa | 176.3 | 191.7 | 179.7 | 194.4 | 173.9 | 190.3 |
| Akwa Ibom | 210.0 | 201.8 | 187.2 | 178.9 | 192.9 | 180.8 |
| Anambra | 159.4 | 168.6 | 181.2 | 179.0 | 176.3 | 182.4 |
| Bauchi | 132.3 | 140.0 | 170.2 | 173.0 | 198.3 | 189.0 |
| Bayelsa | 203.7 | 197.8 | 180.2 | 175.1 | 171.2 | 177.1 |
| Benue | 167.1 | 163.4 | 161.8 | 161.7 | 146.4 | 151.4 |
| Borno | 136.8 | 148.2 | 163.4 | 168.7 | 169.9 | 169.4 |
| Cross River | 171.3 | 203.6 | 176.2 | 200.3 | 187.4 | 207.8 |
| Delta | 186.5 | 190.5 | 180.7 | 174.9 | 167.2 | 166.6 |
| Ebonyi | 144.7 | 144.9 | 169.1 | 168.4 | 169.4 | 166.3 |
| Edo | 161.9 | 167.8 | 165.8 | 172.3 | 179.4 | 183.2 |
| Ekiti | 144.5 | 149.2 | 149.1 | 168.1 | 159.2 | 163.6 |
| Enugu | 124.6 | 143.7 | 175.3 | 173.4 | 175.9 | 180.3 |
| Gombe | 118.9 | 139.1 | 175.8 | 175.7 | 207.9 | 197.7 |
| Imo | 179.8 | 175.9 | 190.4 | 187.3 | 196.5 | 195.1 |
| Jigawa | 129.4 | 147.7 | 177.1 | 173.3 | 188.0 | 183.1 |
| Kaduna | 130.6 | 143.3 | 145.1 | 150.4 | 157.6 | 164.1 |
| Kano | 119.7 | 141.5 | 171.7 | 182.9 | 170.5 | 187.0 |
| Katsina | 140.2 | 158.4 | 178.2 | 177.7 | 182.7 | 182.9 |
| Kebbi | 139.3 | 153.1 | 187.1 | 184.7 | 180.7 | 178.1 |
| Kogi | 140.4 | 151.5 | 153.3 | 164.2 | 141.6 | 158.5 |
| Kwara | 136.8 | 138.0 | 156.2 | 159.6 | 163.1 | 167.6 |
| Lagos | 167.5 | 181.9 | 180.2 | 203.3 | 174.0 | 198.6 |
| Nassarawa | 157.1 | 165.6 | 173.9 | 177.7 | 190.6 | 191.5 |
| Niger | 142.4 | 143.7 | 183.6 | 173.5 | 182.7 | 174.2 |
| Ogun | 152.6 | 153.8 | 160.6 | 164.1 | 155.1 | 168.0 |
| Ondo | 161.2 | 163.4 | 175.5 | 187.1 | 176.3 | 194.8 |
| Osun | 181.4 | 179.0 | 169.7 | 178.0 | 176.7 | 180.6 |
| Oyo | 182.1 | 177.9 | 158.1 | 161.7 | 165.8 | 167.6 |
| Plateau | 152.9 | 158.5 | 200.0 | 200.6 | 204.2 | 207.1 |
| Rivers | 170.7 | 168.6 | 166.6 | 165.9 | 165.3 | 166.7 |
| Sokoto | 126.1 | 148.2 | 148.2 | 176.1 | 157.7 | 188.4 |
| Taraba | 140.5 | 149.3 | 173.9 | 178.2 | 177.7 | 173.0 |
| Yobe | 159.3 | 170.2 | 174.3 | 167.2 | 182.1 | 174.2 |
| Zamfara | 137.2 | 163.1 | 163.9 | 184.8 | 174.2 | 189.4 |

Note: Indices may not be used for inter-state price comparison because market baskets differ from state to state

Table 5 Composite CPI Component Contribution To Overall Change

April-08

| Code | Weights | Month-on | | Year-on | | 12-Month Average | |
|---|---------|----------|--------------|----------|--------------|------------------|--------------|
| | | Change % | Contribution | Change % | Contribution | Change % | Contribution |
| All Items | 1000.0 | 1.6 | 1.6 | 8.2 | 8.2 | 6.1 | 6.1 |
| All Items less Farm Produce. | 409.5 | 1.5 | 0.6 | 1.2 | 0.5 | 6.4 | 2.7 |
| All Items less Farm Produce & Energy | 335.9 | 2.8 | 0.8 | 1.4 | 0.5 | 0.5 | 0.2 |
| Food | 637.6 | 1.5 | 1.0 | 13.1 | 7.9 | 5.1 | 3.1 |
| Food & Non Alcoholic Beverages | 644.1 | 1.5 | 1.0 | 13.1 | 7.9 | 5.3 | 3.3 |
| Alcoholic Beverage, Tobacco & Kola | 20.6 | -0.4 | 0.0 | 2.7 | 0.1 | 7.7 | 0.1 |
| Clothing & Footwear | 32.1 | 5.0 | 0.1 | 2.5 | 0.1 | 3.4 | 0.1 |
| Housing Water, Electricity, Gas & Other Fuel | 181.0 | 1.3 | 0.3 | 2.8 | 0.6 | 8.9 | 1.9 |
| Furnishings & Household Equipment & Maintenance | 38.2 | 1.4 | 0.0 | 6.2 | 0.2 | 7.7 | 0.3 |
| Health | 13.6 | 3.9 | 0.0 | 9.6 | 0.1 | 1.0 | 0.0 |
| Transport | 42.4 | 5.0 | 0.2 | 4.9 | 0.2 | 11.6 | 0.5 |
| Communication | 1.1 | 14.7 | 0.0 | -0.5 | 0.0 | -4.3 | 0.0 |
| Recreation & Culture | 8.9 | -0.4 | 0.0 | 5.8 | 0.0 | 4.7 | 0.0 |
| Education | 2.1 | -1.6 | 0.0 | 3.3 | 0.0 | 11.5 | 0.0 |
| Restaurant & Hotels | 12.9 | 3.9 | 0.1 | 26.3 | 0.4 | 29.6 | 0.4 |
| Miscellaneous Goods & Services | 3.0 | 1.4 | 0.0 | -9.7 | 0.0 | 4.1 | 0.0 |

CPI Composite: Contribution: Month-on Change

Data Columns

| | <i>Weights</i> | Mar-08 | Apr-08 | % Change | Contrib (% p) |
|--|----------------|--------|--------|----------|---------------|
| All Items | 1000.0 | 171.58 | 174.26 | 1.56 | 1.56 |
| All Items less Farm Produce. | 409.5 | 170.91 | 173.45 | 1.49 | 0.61 |
| All Items less Farm Produce & Energy | 335.9 | 156.05 | 160.39 | 2.78 | 0.85 |
| Food | 637.6 | 168.73 | 171.30 | 1.52 | 0.96 |
| Food & Non Alcoholic Beverages | 644.1 | 168.93 | 171.53 | 1.54 | 0.98 |
| Alcoholic Beverage, Tobacco & Kola | 20.6 | 163.39 | 162.73 | -0.40 | -0.01 |
| Clothing & Footwear | 32.1 | 140.51 | 147.56 | 5.02 | 0.13 |
| Housing Water, Electricity. Gas & Other Fuel | 181.0 | 201.81 | 204.47 | 1.32 | 0.28 |
| Furnishings & Household Equipment & Maintanance. | 38.2 | 151.96 | 154.05 | 1.38 | 0.05 |
| Health. | 13.6 | 145.42 | 151.10 | 3.91 | 0.05 |
| Transport | 42.4 | 161.80 | 169.90 | 5.01 | 0.20 |
| Communication | 1.1 | 194.80 | 223.45 | 14.71 | 0.02 |
| Recreation & Culture. | 8.9 | 144.35 | 143.81 | -0.37 | 0.00 |
| Education | 2.1 | 181.50 | 178.68 | -1.55 | 0.00 |
| Restaurant & Hotels | 12.9 | 220.93 | 229.56 | 3.91 | 0.06 |
| Miscellaneous Goods & Sevices | 3.0 | 151.01 | 153.16 | 1.42 | 0.00 |
| Discrepancy | | | | | -0.19 |

CPI Composite: Contribution: Year-on Change

| | <i>Weights</i> | Data Columns | | % Change | Contrib (% p) |
|--|----------------|---------------------|--------|----------|---------------|
| | | Apr-07 | Apr-08 | | |
| All Items | 1000.0 | 161.1 | 174.26 | 8.17 | 8.17 |
| All Items less Farm Produce. | 409.5 | 171.4 | 173.45 | 1.19 | 0.52 |
| All Items less Farm Produce & Energy | 335.9 | 158.1 | 160.39 | 1.44 | 0.47 |
| Food | 637.6 | 151.4 | 171.30 | 13.13 | 7.87 |
| Food & Non Alcoholic Beverages | 644.1 | 151.7 | 171.53 | 13.08 | 7.93 |
| Alcoholic Beverage, Tobacco & Kola | 20.6 | 158.4 | 162.73 | 2.75 | 0.06 |
| Clothing & Footwear | 32.1 | 144.0 | 147.56 | 2.47 | 0.07 |
| Housing Water, Electricity, Gas & Other Fuel | 181.0 | 198.9 | 204.47 | 2.78 | 0.62 |
| Furnishings & Household Equipment & Maintenance. | 38.2 | 145.1 | 154.05 | 6.18 | 0.21 |
| Health. | 13.6 | 137.9 | 151.10 | 9.58 | 0.11 |
| Transport | 42.4 | 161.9 | 169.90 | 4.92 | 0.21 |
| Communication | 1.1 | 224.7 | 223.45 | -0.55 | 0.00 |
| Recreation & Culture. | 8.9 | 135.9 | 143.81 | 5.84 | 0.04 |
| Education | 2.1 | 173.0 | 178.68 | 3.30 | 0.01 |
| Restaurant & Hotels | 12.9 | 181.8 | 229.56 | 26.26 | 0.38 |
| Miscellaneous Goods & Services | 3.0 | 169.6 | 153.16 | -9.70 | -0.03 |

CPI Composite: Contribution: 12 Month average-on Change

Data Columns

| | <i>Weights</i> | Apr-07 | Apr-08 | % Change | Contrib (% p) |
|--|----------------|--------|--------|----------|---------------|
| All Items | 1000.0 | 158.46 | 168.10 | 6.08 | 6.08 |
| All Items less Farm Produce. | 409.5 | 164.38 | 174.94 | 6.43 | 2.73 |
| All Items less Farm Produce & Energy | 335.9 | 157.61 | 158.48 | 0.55 | 0.18 |
| Food | 637.6 | 153.04 | 160.85 | 5.10 | 3.14 |
| Food & Non Alcoholic Beverages | 644.1 | 152.94 | 161.10 | 5.33 | 3.32 |
| Alcoholic Beverage, Tobacco & Kola | 20.6 | 148.04 | 159.51 | 7.75 | 0.15 |
| Clothing & Footwear | 32.1 | 136.52 | 141.12 | 3.37 | 0.09 |
| Housing Water, Electricity. Gas & Other Fuel | 181.0 | 189.87 | 206.73 | 8.88 | 1.93 |
| Furnishings & Household Equipment & Maintanance. | 38.2 | 137.26 | 147.89 | 7.75 | 0.26 |
| Health. | 13.6 | 141.43 | 142.79 | 0.96 | 0.01 |
| Transport | 42.4 | 152.75 | 170.50 | 11.62 | 0.47 |
| Communication | 1.1 | 223.76 | 214.06 | -4.33 | -0.01 |
| Recreation & Culture. | 8.9 | 137.09 | 143.57 | 4.73 | 0.04 |
| Education | 2.1 | 159.02 | 177.25 | 11.47 | 0.02 |
| Restaurant & Hotels | 12.9 | 162.95 | 211.24 | 29.63 | 0.39 |
| Miscellaneous Goods & Sevices | 3.0 | 149.47 | 155.57 | 4.08 | 0.01 |