

NO. 443

15th March, 2008

CONSUMER PRICE INDEX: FEBRUARY 2008

ALL ITEMS INDEX

The Composite Consumer Price Index increased by 0.3 percent to 170.38 points in February 2008. This was compared to 169.8 observed in January 2008. The rise in the index was caused mainly by increase in the price of some food items, cement, roofing sheets, kerosene and gas. The Urban All items index rose by 1.4 percent while the corresponding Rural index fell by 0.3 percent over the period when compared with their preceding months.

The year on year average Consumer Price level as at February 2008 rose by 8.0 percent. This was lower than 8.6 observed in January 2008. The corresponding urban and rural indices rose by 13.1 and 5.5 percent respectively over the period.

The percentage change in the average Composite CPI for the twelve-month period ending February 2008 over the average of the CPI for the previous twelve-month period was 5.5. This was the same as what was recorded by making similar comparison in January 2008.

The corresponding urban and rural indices rose by 11.1 and 2.9 percent respectively.

FOOD INDEX

The Composite Food Index declined by 0.5 percent in February 2008. The fall in the index was caused by decrease in the prices of some staple foods, sea food, and vegetables. The level of the composite food index was higher than the corresponding level a year ago by 8.7 percent. The average annual rate of rise of the index was 3.3 percent for the twelve-month period ending February 2008.

ALL ITEMS LESS FARM PRODUCE

The "All Items Less Farm Produce" index which excludes the prices of agricultural produce was 177.8 in February 2008. The index was up by 1.4 percent when compared with January 2008 figure.

In the twelve-month to February 2008, the index rose by 6.4 percent while the average annual rate of rise of the index was 7.5 percent for the twelve-month period ending February 2008.

Table 1 Composite Consumer Price Index (Base May 2003 = 100)

	All Items Index				All Items less Farm Produce				Food			
	Monthly change (%)	Month-on change (%)	Year-on change (%)	12-Month average change (%)	Monthly change (%)	Month-on change (%)	Year-on change (%)	12-Month average change (%)	Monthly change (%)	Month-on change (%)	Year-on change (%)	12-Month average change (%)
Weights	1000.0				409.5				637.6			
2004 Jan	119.1	1.0	22.4	15.0	134.8	3.4	38.0	29.0	109.7	-1.5	11.9	6.3
Feb	119.7	0.5	24.8	16.5	136.1	0.9	41.1	31.2	110.0	0.3	14.5	7.2
Mar	116.1	-3.0	22.5	17.8	129.5	-4.8	32.6	32.6	108.0	-1.8	15.6	8.5
Apr	116.4	0.3	17.5	18.5	122.6	-5.4	22.5	32.9	112.5	4.1	14.4	9.4
May	119.8	2.9	19.8	19.4	123.4	0.7	23.4	33.2	118.1	4.9	18.1	10.6
June	120.0	0.2	14.1	19.4	121.8	-1.3	14.7	32.3	119.3	1.0	14.5	11.3
July	121.2	1.0	10.7	19.1	128.2	5.3	5.8	29.0	117.1	-1.8	12.2	12.4
Aug	122.2	0.8	13.0	19.1	126.2	-1.6	9.1	26.9	119.1	1.7	16.3	13.7
Sep	123.8	1.3	9.1	18.2	126.8	0.5	3.6	23.9	121.6	2.1	14.6	14.4
Oct	126.6	2.3	10.7	17.1	132.4	4.4	3.4	20.7	122.2	0.5	15.4	14.6
Nov	127.6	0.8	10.0	16.1	133.5	0.9	3.2	17.9	123.6	1.1	15.1	14.8
Dec	129.7	1.7	10.0	15.0	138.0	3.4	5.9	15.5	124.8	1.0	12.1	14.5
2005 Jan	130.8	0.9	9.8	14.0	137.4	-0.4	2.0	12.6	126.2	1.2	15.1	14.8
Feb	132.8	1.5	10.9	12.9	135.5	-1.4	-0.4	9.4	130.6	3.5	18.7	15.2
Mar	135.0	1.7	16.3	12.5	134.2	-0.9	3.6	7.3	135.1	3.4	25.0	16.0
Apr	137.3	1.7	17.9	12.6	139.5	3.9	13.8	6.8	135.3	0.2	20.3	16.5
May	139.9	1.9	16.8	12.5	143.9	3.2	16.6	6.5	136.6	1.0	15.7	16.3
Jun	142.3	1.7	18.6	12.9	141.5	-1.6	16.2	6.7	140.8	3.0	18.0	16.6
Jul	152.9	7.4	26.1	14.2	142.0	0.3	10.7	7.1	158.8	12.8	35.7	18.6
Aug	156.7	2.5	28.2	15.5	141.5	-0.4	12.1	7.4	164.9	3.8	38.5	20.5
Sep	153.9	-1.8	24.3	16.8	145.3	2.7	14.6	8.3	157.4	-4.5	29.5	21.8
Oct	150.2	-2.4	18.6	17.4	144.9	-0.3	9.4	8.8	152.2	-3.3	24.6	22.5
Nov	146.9	-2.2	15.1	17.8	142.6	-1.5	6.8	9.1	147.9	-2.8	19.7	22.9
Dec	144.7	-1.5	11.6	17.9	141.3	-0.9	2.4	8.8	144.1	-2.5	15.5	23.1
2006 Jan	144.9	0.1	10.7	17.9	143.3	1.4	4.3	9.0	144.8	0.5	14.7	22.9
Feb	147.2	1.6	10.8	17.8	150.5	5.0	11.1	10.0	144.3	-0.3	10.5	22.1
Mar	151.3	2.8	12.0	17.4	156.1	3.7	16.3	11.1	147.6	2.3	9.3	20.7
Apr	154.6	2.2	12.6	16.9	162.7	4.2	16.6	11.3	148.3	0.5	9.6	19.8
May	154.7	0.1	10.5	16.4	164.8	1.3	14.5	11.2	148.4	0.1	8.6	19.1
Jun	154.4	-0.2	8.5	15.5	160.8	-2.4	13.6	11.0	149.6	0.8	6.2	18.0
Jul	157.5	2.0	3.0	13.5	161.3	0.3	13.6	11.3	153.0	2.3	-3.7	14.5
Aug	162.5	3.2	3.7	11.4	161.9	0.4	14.5	11.5	161.2	5.3	-2.3	11.0
Sep	163.5	0.6	6.3	10.0	160.7	-0.8	10.6	11.2	164.1	1.8	4.3	9.0
Oct	159.4	-2.5	6.1	9.0	157.9	-1.7	9.0	11.1	159.4	-2.9	4.7	7.5
Nov	158.3	-0.7	7.8	8.5	159.9	1.3	12.1	11.6	155.9	-2.2	5.4	6.4
Dec	157.1	-0.8	8.5	8.2	165.7	3.6	17.3	12.8	149.7	-4.0	3.9	5.6
2007 Jan	156.4	-0.4	8.0	8.0	171.0	3.2	19.3	14.0	144.6	-3.4	-0.1	4.4
Feb	157.6	0.8	7.1	7.7	167.1	-2.3	11.0	14.0	149.1	3.1	3.3	3.9
Mar	159.2	1.0	5.2	7.2	170.0	1.7	8.9	13.4	150.1	0.7	1.7	3.3
Apr	161.1	1.2	4.2	6.5	171.4	0.8	5.4	12.4	151.4	0.9	2.1	2.7
May	161.9	0.5	4.6	6.0	172.4	0.6	4.6	11.5	151.9	0.4	2.4	2.2
Jun	164.3	1.5	6.4	5.9	176.3	2.3	9.6	11.1	154.4	1.6	3.2	2.0
Jul	165.1	0.5	4.8	6.0	177.3	0.6	9.9	10.8	154.7	0.2	1.1	2.4
Aug	169.4	2.6	4.2	6.1	180.1	1.6	11.2	10.6	159.3	3.0	-1.2	2.5
Sep	170.2	0.5	4.1	5.9	177.5	-1.5	10.5	10.6	162.8	2.2	-0.8	2.1
Oct	166.7	-2.1	4.6	5.7	174.8	-1.5	10.7	10.7	159.3	-2.2	-0.1	1.7
Nov	166.5	-0.1	5.2	5.5	171.7	-1.8	7.4	10.3	160.8	1.0	3.2	1.5
Dec	167.4	0.6	6.6	5.4	171.7	0.0	3.6	9.2	162.0	0.7	8.2	1.9
2008 Jan	169.8	1.4	8.6	5.5	175.4	2.1	2.5	7.9	162.9	0.5	12.6	2.9
Feb	170.3	0.3	8.0	5.5	177.8	1.4	6.4	7.5	162.1	-0.5	8.7	3.3

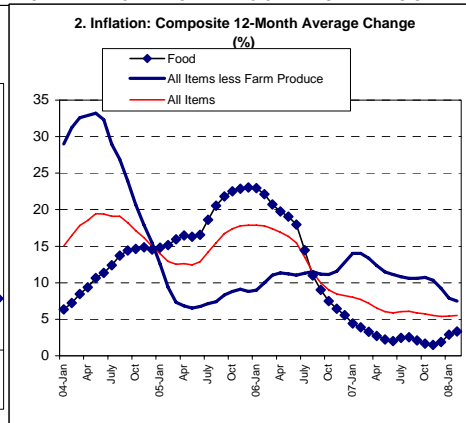
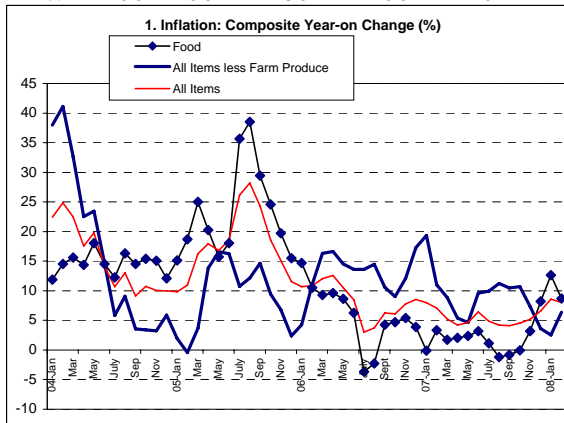


Table 2 Composite Consumer Price Index (Base May 2003 = 100)

		All Items	All Items less Farm Produce.	All Items less Farm Produce and Energy	Food	Food & Non Alcoholic Bev.	Alcoholic Beverage, Tobacco and Kola	Clothing and Footwear	Housing, Water, Electricity, Gas and Other Fuel	Furnishings & Household Equipment Maintenance.	Health.	Transport	Communication	Recreation & Culture.	Education	Restaurant & Hotels	Miscellaneous Goods & Services	Month-on (%)	Year-on (%)	12-month average (%)
	Weights	1000	409.53	335.89	637.6	644.1	20.6	32.1	181.0	38.2	13.6	42.4	1.1	8.9	2.1	12.9	3.0			
2004	Jan	119.1	134.8	122.4	109.7	109.9	107.9	136.2	139.4	109.8	126.5	125.1	104.5	149.4	157.0	119.1	138.1	1.0	22.4	15.0
	Feb	119.7	136.1	122.6	110.0	110.3	109.3	138.5	142.0	109.3	151.3	120.8	104.6	145.3	141.9	118.5	146.4	0.5	24.8	16.5
	Mar	116.1	129.5	127.4	108.0	108.3	109.2	135.7	136.1	113.2	150.5	128.9	104.7	148.0	144.7	118.2	140.0	-3.0	22.5	17.8
	Apr	116.4	122.6	116.6	112.5	112.7	108.6	107.9	132.1	107.8	124.0	124.5	104.7	113.4	131.1	114.2	122.4	0.3	17.5	18.5
	May	119.8	123.4	117.5	118.1	118.2	111.5	108.4	127.4	109.0	119.2	117.4	117.6	114.4	133.4	112.0	122.3	2.9	19.8	19.4
	June	120.0	121.8	118.2	119.3	119.2	110.6	109.1	131.8	110.0	111.6	118.3	125.0	114.6	128.7	118.0	118.2	0.2	14.1	19.4
	July	121.2	128.2	118.4	117.1	117.2	109.1	112.1	138.4	116.7	117.1	117.0	180.3	111.2	121.7	117.1	126.1	1.0	10.7	19.1
	Aug	122.2	126.2	121.3	119.1	119.1	121.5	114.6	138.1	115.1	117.6	120.5	214.1	115.4	127.4	114.1	122.9	0.8	13.0	19.1
	Sep	123.8	126.8	121.8	121.6	121.7	113.7	113.7	142.9	113.5	114.0	115.5	233.1	114.9	133.8	119.1	125.6	1.3	9.1	18.2
	Oct	126.6	132.4	123.6	122.2	122.3	119.9	114.8	151.8	116.7	117.1	115.7	240.9	116.0	133.7	118.6	130.2	2.3	10.7	17.1
	Nov	127.6	133.5	126.4	123.6	123.6	115.5	118.2	156.1	115.4	117.2	117.5	241.0	114.7	142.6	120.8	127.8	0.8	10.0	16.1
	Dec	129.7	138.0	122.9	124.8	124.8	114.3	111.4	156.4	114.8	111.3	115.5	241.2	118.7	126.8	124.1	132.8	1.7	10.0	15.0
2005	Jan	130.8	137.4	123.9	126.2	126.2	117.8	115.8	159.0	115.6	118.7	117.0	232.0	119.3	140.2	128.6	130.2	0.9	9.8	14.0
	Feb	132.8	135.5	126.5	130.6	130.6	116.0	117.4	149.5	119.2	117.6	118.1	244.2	115.6	137.8	129.9	132.6	1.5	10.9	12.9
	Mar	135.0	134.2	128.3	135.1	134.9	118.5	117.7	153.1	120.6	118.4	113.8	237.4	117.1	134.7	132.2	130.1	1.7	16.3	12.5
	Apr	137.3	139.5	133.2	135.3	135.2	118.8	119.0	159.8	121.0	123.4	123.2	239.3	119.3	142.4	137.0	135.4	1.7	17.9	12.6
	May	139.9	143.9	135.4	136.6	136.5	122.5	120.1	163.9	127.0	126.8	124.2	239.3	121.9	147.9	135.6	131.8	1.9	16.8	12.5
	Jun	142.3	141.5	139.2	140.8	140.7	119.8	122.9	157.7	126.2	123.8	129.2	243.9	122.8	149.4	139.9	139.1	1.7	18.6	12.9
	Jul	152.9	142.0	138.4	158.8	158.4	122.8	123.2	159.8	130.9	127.2	132.4	243.7	116.4	142.5	133.1	135.0	7.4	26.1	14.2
	Aug	156.7	141.5	137.2	164.9	164.4	123.1	121.8	156.2	133.5	127.1	128.3	238.1	118.6	146.8	137.3	138.2	2.5	28.2	15.5
	Sep	153.9	145.3	139.7	157.4	157.2	126.5	116.6	160.2	127.2	129.3	125.7	222.8	122.8	150.9	134.4	142.8	-1.8	24.3	16.8
	Oct	150.2	144.9	140.1	152.2	152.0	126.1	120.3	162.1	129.7	127.8	133.7	214.6	120.4	146.5	140.2	136.0	-2.4	18.6	17.4
	Nov	146.9	142.6	136.1	147.9	147.7	126.4	120.8	156.9	127.5	133.5	129.7	225.7	117.6	141.7	139.0	145.5	-2.2	15.1	17.8
	Dec	144.7	141.3	134.1	144.1	143.8	128.9	113.0	158.1	129.7	138.5	129.9	222.0	119.6	152.1	122.0	144.1	-1.5	11.6	17.9
2006	Jan	144.9	143.3	138.4	144.8	144.6	132.7	115.4	157.4	128.7	137.4	141.2	194.6	123.3	155.6	122.0	146.1	0.1	10.7	17.9
	Feb	147.2	150.5	141.5	144.3	144.2	130.0	121.7	178.2	130.7	147.5	131.3	224.4	114.2	143.4	124.8	138.7	1.6	10.8	17.8
	Mar	151.3	156.1	143.5	147.6	147.5	129.7	119.3	186.3	129.7	148.1	134.4	224.9	115.4	143.1	131.0	127.4	2.8	12.0	17.4
	Apr	154.6	162.7	148.5	148.3	148.1	130.6	124.1	191.3	131.0	142.0	136.9	223.3	117.6	135.7	128.3	132.6	2.2	12.6	16.9
	May	154.7	164.8	153.7	148.4	148.4	132.7	120.9	187.8	130.8	129.2	140.7	217.2	117.0	140.9	126.7	134.4	0.1	10.5	16.4
	Jun	154.4	160.8	158.7	149.6	149.4	132.9	124.5	192.8	133.4	130.1	140.1	220.0	120.7	142.1	129.1	144.2	-0.2	8.5	15.5
	Jul	157.5	161.3	159.4	153.0	152.7	139.5	132.3	188.4	131.1	122.4	138.5	224.0	131.3	141.2	145.8	138.9	2.0	3.0	13.5
	Aug	162.5	161.9	153.5	161.2	161.0	143.6	132.2	188.8	133.0	141.4	140.8	223.8	133.9	154.4	152.7	150.1	3.2	3.7	11.4
	Sep	163.5	160.7	155.1	164.1	163.7	146.9	134.4	188.5	135.2	144.2	148.4	225.1	138.2	165.0	154.6	145.2	0.6	6.3	10.0
	Oct	159.4	157.9	158.4	159.4	159.1	144.3	142.5	184.7	132.6	151.5	148.8	223.0	159.0	171.5	173.4	144.6	-2.5	6.1	9.0
	Nov	158.3	159.9	161.0	155.9	155.8	149.9	138.8	185.2	137.1	150.7	151.1	226.7	148.2	163.6	167.8	151.0	-0.7	7.8	8.5
	Dec	157.1	165.7	164.4	149.7	149.5	152.0	146.0	187.0	143.0	152.2	160.8	223.8	141.8	154.8	183.7	153.1	-0.8	8.5	8.2
2007	Jan	156.4	171.0	156.6	144.6	144.7	155.7	139.9	192.1	142.1	148.7	168.4	226.1	142.9	166.3	176.4	158.9	-0.4	8.0	8.0
	Feb	157.6	167.1	154.2	149.1	149.2	157.2	141.6	187.4	137.7	146.7	171.9	228.8	140.6	166.3	185.5	137.9	0.8	7.1	7.7
	Mar	159.2	170.0	158.2	150.1	150.2	163.5	141.0	197.0	146.0	142.2	161.4	222.0	135.6	169.2	177.9	165.7	1.0	5.2	7.2
	Apr	161.1	171.4	158.1	151.4	151.7	158.4	144.0	198.9	145.1	137.9	161.9	224.7	135.9	173.0	181.8	169.6	1.2	4.2	6.5
	May	161.9	172.4	157.9	151.9	152.1	157.7	138.3	203.9	148.7	133.7	172.8	226.0	138.8	168.1	187.3	166.0	0.5	4.6	6.0
	Jun	164.3	176.3	158.2	154.4	154.5	157.1	135.3	207.0	142.3	135.9	178.6	223.6	144.5	167.9	205.4	152.1	1.5	6.4	5.9
	Jul	165.1	177.3	158.8	154.7	155.0	155.9	138.7	211.8	144.6	134.9	170.1	224.0	144.4	177.7	210.2	154.2	0.5	4.8	6.0
	Aug	169.4	180.1	162.1	159.3	159.5	161.3	138.9	215.4	146.7	149.6	171.0	224.5	145.6	174.7	203.3	156.6	2.6	4.2	6.1
	Sep	170.2	177.5	160.8	162.8	163.0	162.2	139.9	212.2	145.6	143.2	175.2	214.4	143.2	163.0	200.9	162.3	0.5	4.1	5.9
	Oct	166.7	174.8	157.0	159.3	159.5	158.4	143.4	207.6	147.1	151.3	167.7	193.4	144.5	183.8	211.3	156.1	-2.1	4.6	5.7
	Nov	166.5	171.7	154.0	160.8	161.2	157.9	142.7	201.9	150.8	143.5	171.4	224.7	144.6	186.2	214.7	149.9	-0.1	5.2	5.5
	Dec	167.4	171.7	153.7	162.0	162.4	157.1	142.8	202.8	146.9	142.3	172.1	225.1	141.3	180.0	220.4	153.7	0.6	6.6	5.4
2008	Jan	169.8	175.4	158.8	162.9	163.2	161.0	142.5	205.1	147.7	141.7	165.9	197.7	145.3	182.6	213.3	156.2	1.4	8.6	5.5
	Feb	170.3	177.8	164.1	162.1	162.4	159.4	142.9	206.6	148.2	140.8	169.4	197.2	142.4	183.0	217.5	155.7	0.3	8.0	5.5

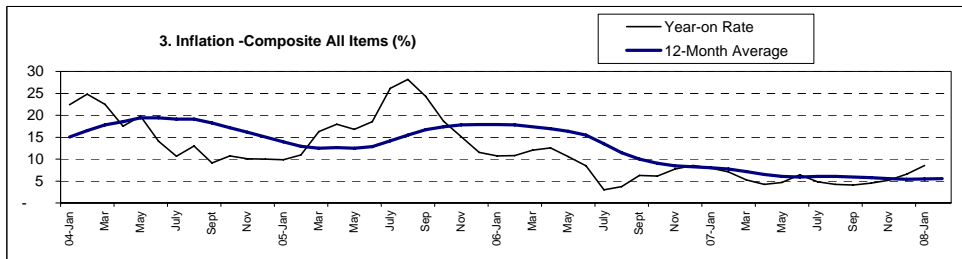


Table 2A Old Series Composite Consumer Price Index (Base September 1985 = 100)

	All Items	All Items less Farm Produce	Food	Drinks, Tobacco and Kola	Clothing and Footwear	Accommodation, Fuel and Lighting	Household Goods	Medical care and Health Exp.	Transport	Recreation, Ent., Educ. and Cult. Services	Other Services	Month-on (%)	Year-on (%)	12-month average (%)
<i>Weights</i>	1000.0	362.3	690.9	47.4	46.9	118.7	35.8	11.0	23.5	13.7	12.1			
2004 Jan	6175.2	8089.2	5182.8	6319.2	4571.8	11257.2	4681.1	4577.9	8348.5	10493.0	11241.4	1.0	22.4	15.0
Feb	6206.3	8167.2	5198.0	6402.3	4649.0	11467.2	4659.8	5475.4	8061.6	10205.0	11241.4	0.5	24.8	16.5
Mar	6020.6	7771.1	5104.4	6396.5	4555.0	10990.7	4826.0	5446.5	8602.1	10396.8	11396.0	-3.0	22.5	17.8
Apr	6037.2	7357.1	5315.1	6360.2	3621.9	10667.7	4595.8	4487.4	8308.5	7964.5	9963.4	0.3	17.5	18.5
May	6211.5	7405.1	5579.7	6530.0	3638.7	10288.2	4647.0	4313.7	7834.7	8034.8	9955.3	2.9	19.8	19.4
June	6221.8	7309.1	5636.4	6477.3	3662.2	10643.5	4689.6	4038.7	7894.7	8048.8	9621.5	0.2	14.1	19.4
July	6284.0	7693.1	5532.5	6389.4	3762.9	11176.5	4975.2	4237.7	7454.3	7810.0	10264.6	1.0	10.7	19.1
Aug	6335.9	7573.1	5627.0	7115.6	3846.8	11152.3	4907.0	4255.8	8041.5	8105.0	10004.1	0.8	13.0	19.1
Sep	6418.8	7609.1	5745.1	6658.8	3816.6	11539.9	4838.8	4125.6	7707.9	8069.9	10223.9	1.3	9.2	18.2
Oct	6564.0	7945.2	5773.4	7021.9	3853.5	12258.6	4975.2	4237.7	7721.2	8147.2	10598.3	2.3	10.8	17.1
Nov	6615.9	8011.2	5837.2	6764.8	3967.6	12605.8	4919.8	4241.4	7841.3	8053.0	10403.0	0.8	10.1	16.2
Dec	6729.9	8281.2	5895.3	6691.6	3739.4	12630.1	4894.2	4027.8	7707.9	8334.7	10810.0	1.7	10.1	15.0
2005 Jan	6783.9	8245.2	5962.4	6904.8	3893.8	12832.0	4928.4	4295.6	7794.6	8378.9	10590.2	0.8	9.9	14.0
Feb	6885.0	8130.0	6169.8	6790.6	3941.8	12075.3	5079.7	4255.1	7878.0	8119.8	10793.7	1.5	10.9	12.9
Mar	6999.5	8053.2	6382.9	6940.0	3950.8	12363.6	5141.5	4284.8	7594.4	8224.4	10590.2	1.7	16.3	12.5
Apr	7118.8	8371.2	6392.3	6957.5	3994.5	12904.6	5158.6	4465.7	8221.7	8378.9	11021.6	1.7	17.9	12.6
May	7253.6	8635.3	6453.7	7174.2	4031.4	13235.7	5414.4	4588.8	8288.4	8561.5	10728.6	1.9	16.8	12.5
Jun	7378.0	8491.3	6652.2	7016.1	4125.4	12735.0	5380.3	4480.2	8622.1	8624.7	11322.8	1.7	18.6	12.9
Jul	7927.6	8521.3	7502.6	7191.8	4135.5	12904.6	5580.6	4603.3	8835.7	8175.2	10989.0	7.4	26.2	14.2
Aug	8124.7	8491.3	7790.8	7209.4	4088.5	12613.9	5691.5	4599.6	8555.4	8329.8	11249.5	2.5	28.2	15.5
Sep	7979.5	8719.3	7436.5	7408.5	3913.9	12936.9	5422.9	4679.3	8388.6	8624.7	11624.0	-1.8	24.3	16.8
Oct	7787.6	8695.3	7190.8	7385.0	4038.1	13090.4	5529.5	4625.0	8922.4	8456.2	11070.4	-2.4	18.6	17.4
Nov	7616.5	8557.3	6987.6	7402.6	4054.9	12670.4	5435.7	4831.2	8655.5	8259.5	11843.7	-2.2	15.1	17.8
Dec	7502.5	8479.3	6808.1	7549.0	3793.1	12767.3	5529.5	5012.2	8668.8	8400.0	11729.8	-1.5	11.5	17.9
2006 Jan	7512.8	8599.3	6841.2	7771.6	3873.6	12710.8	5486.8	4972.4	9422.9	8659.9	11892.6	0.1	10.7	17.9
Feb	7631.1	9061.3	6817.5	7613.5	4085.1	14390.5	5572.1	5337.9	8762.3	8020.7	11290.2	1.6	10.8	17.8
Mar	7842.6	9369.8	6972.0	7595.9	4005.9	15047.1	5530.8	5358.5	8967.8	8105.0	10370.4	2.8	12.0	17.4
Apr	8015.8	9763.4	7006.5	7648.6	4165.7	15448.4	5586.2	5138.9	9136.0	8259.5	10793.7	2.2	12.6	16.9
May	8021.0	9889.5	7011.2	7771.6	4058.3	15165.8	5576.4	4675.6	9389.6	8217.4	10940.2	0.1	10.6	16.4
Jun	8005.4	9649.4	7067.9	7783.3	4179.1	15569.5	5687.2	4708.2	9349.5	8477.3	11737.9	-0.2	8.5	15.5
Jul	8166.1	9679.4	7228.6	8169.8	4440.9	14972.0	5589.2	4429.5	9242.8	9221.7	11306.5	2.0	3.0	13.5
Aug	8425.4	9715.4	7616.0	8409.9	4437.6	15246.5	5670.2	5117.1	9396.2	9404.3	12218.2	3.2	3.7	11.4
Sep	8477.2	9643.4	7753.0	8603.2	4511.4	15222.3	5764.0	5218.5	9903.4	9706.4	11819.3	0.6	6.2	10.0
Oct	8264.7	9475.4	7530.9	8450.9	4783.3	14915.4	5653.1	5482.6	9930.1	11167.2	11770.5	-2.5	6.1	9.0
Nov	8207.6	9595.4	7365.6	8778.9	4659.1	14955.8	5845.0	5453.7	10083.6	10408.7	12291.4	-0.7	7.8	8.5
Dec	8145.4	9943.5	7072.7	8901.9	4900.8	15101.2	6096.5	5508.0	10730.9	9959.2	12462.4	-0.8	8.6	8.2
2007 Jan	8109.1	10261.5	6831.7	8474.4	4696.0	15513.0	6058.1	5381.3	11238.1	10036.5	12934.5	-0.4	7.9	8.0
Feb	8171.3	10027.5	7044.3	8737.9	4753.1	15133.5	5870.5	5308.9	11471.7	9874.9	11225.1	0.8	7.1	7.7
Mar	8254.3	10201.5	7091.6	8796.5	4732.9	15908.7	6224.4	5146.1	10771.0	9523.7	13488.0	1.0	5.2	7.2
Apr	8352.8	10285.5	7153.0	8884.3	4833.6	16062.1	6186.0	4990.5	10804.3	9544.8	13805.5	1.2	4.2	6.5
May	8394.3	10345.5	7176.6	8907.7	4642.3	16465.9	6339.5	4838.5	11531.8	9748.5	13512.4	0.5	4.7	6.0
Jun	8518.7	10579.6	7294.7	9200.6	4541.6	16716.3	6066.6	4918.1	11918.8	10148.8	12381.0	1.5	6.4	5.9
Jul	8560.2	10639.6	7308.9	9130.3	4655.7	17103.9	6164.7	4881.9	11351.6	10141.8	12551.9	0.5	4.8	6.0
Aug	8783.1	10807.6	7526.2	9446.5	4662.5	17394.6	6254.2	5413.9	11411.6	10226.1	12747.3	2.6	4.2	6.1
Sep	8824.6	10651.6	7691.6	9499.2	4696.0	17136.2	6207.3	5182.3	11691.9	10057.5	13211.3	0.5	4.1	5.9
Oct	8643.1	10489.6	7526.2	9276.7	4813.5	16764.7	6271.3	5475.4	11191.4	10148.8	12706.6	-2.1	4.6	5.7
Nov	8632.8	10303.5	7597.1	9247.4	4790.0	16304.4	6429.0	5193.1	11438.3	10155.9	12201.9	-0.1	5.2	5.5
Dec	8679.4	10297.5	7655.7	9200.6	4793.4	16377.1	6262.8	5150.8	11485.7	9923.4	12507.2	0.5	6.6	5.4
2008 Jan	8803.9	10522.6	7695.8	9431.3	4782.3	16563.6	6297.7	5126.9	11073.3	10202.2	12716.4	1.4	8.6	5.5
Feb	8829.8	10669.6	7658.5	9340.5	4796.7	16684.0	6318.2	5095.4	11304.9	10001.3	12674.0	0.3	8.1	5.5

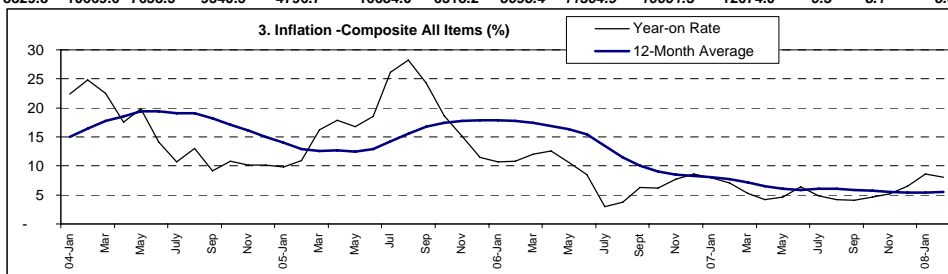


Table 3 Urban Consumer Price Index (Base May 2003 = 100)

	All Items	All Items less Farm Produce	All Items less Farm Produce and Energy	Food	Food & Non Alcoholic Bev.	Alcoholic Beverage, Tobacco and Kola	Clothing and Footwear	Housing Water, Electricity, Gas and Other Fuel	Furnishings & Household Equipment Maintenance	Health	Transport	Communication	Recreation & Culture	Education	Restaurant & Hotels	Miscellaneous Goods & Services	Month-on (%)	Year-on (%)	12-month average (%)	
Weights	1000	425.6	335.9	626.5	634.5	13.1	36.2	172.8	44.6	8.7	50.3	1.5	13.3	3.3	18.8	2.9				
2004	Jan	119.2	130.3	122.6	111.7	111.6	107.8	158.9	137.4	114.8	115.5	130.4	100.5	100.9	163.1	116.9	119.0	1.5	23.5	17.7
	Feb	120.0	130.9	123.0	112.5	112.4	109.1	165.0	136.9	117.4	174.8	125.4	100.4	99.3	170.9	111.9	119.6	0.7	26.4	19.3
	Mar	123.4	135.0	125.8	115.6	115.4	109.8	161.2	142.1	118.2	175.4	136.4	100.5	100.4	166.8	108.8	121.1	2.8	31.1	21.4
	Apr	121.8	127.7	118.7	118.1	117.9	111.1	104.9	137.8	112.1	116.9	129.1	100.6	106.1	154.7	126.4	118.8	-1.3	23.9	22.6
	May	122.8	122.5	116.4	124.0	123.7	113.4	105.7	126.9	116.4	110.8	121.4	108.1	110.2	166.5	103.9	121.6	0.8	22.8	23.7
	June	123.9	128.3	117.6	121.4	121.2	112.6	109.6	138.8	115.5	106.9	123.0	115.8	111.1	166.1	121.0	122.2	0.9	16.7	23.7
	July	123.8	128.0	118.4	120.2	120.0	107.8	113.1	144.8	120.4	109.6	111.3	153.4	107.5	154.3	116.3	125.8	-0.1	9.3	22.7
	Aug	126.3	128.5	119.4	124.1	123.9	123.9	114.4	142.2	119.3	115.6	113.7	236.0	117.3	157.0	114.6	131.3	2.0	12.2	21.7
	Sep	127.5	132.0	121.2	123.5	123.4	116.9	111.9	151.5	119.8	115.7	110.2	247.3	111.5	152.7	125.1	134.3	1.0	8.8	20.4
	Oct	130.3	136.7	123.5	125.3	125.1	118.5	114.2	159.9	118.3	115.4	111.0	245.4	110.1	157.0	126.8	133.9	2.2	12.2	19.3
	Nov	133.5	142.4	126.4	127.0	126.8	118.7	120.1	168.5	123.1	114.1	112.8	244.9	108.6	163.5	127.7	131.3	2.5	11.5	17.9
	Dec	131.3	137.8	122.4	126.5	126.3	115.5	113.0	159.1	115.5	112.6	115.0	245.5	120.7	162.8	132.7	141.1	-1.7	11.8	16.9
2005	Jan	135.9	142.0	125.7	131.4	131.2	117.3	119.2	164.9	121.4	116.9	114.8	245.5	112.9	155.9	140.5	138.8	3.5	14.0	16.1
	Feb	137.3	136.7	126.5	137.0	136.7	117.5	121.9	151.4	125.3	113.1	119.7	251.7	112.3	150.4	143.4	132.2	1.0	14.4	15.3
	Mar	139.8	141.3	128.2	137.8	137.5	120.7	119.8	161.0	127.6	111.7	118.3	241.8	113.5	153.2	146.6	129.5	1.8	13.3	14.0
	Apr	141.9	144.2	133.2	139.4	139.1	121.7	124.8	163.6	130.6	122.4	118.6	241.8	121.2	156.3	153.1	132.5	1.5	16.5	13.5
	May	146.9	147.5	135.4	145.3	144.9	124.5	126.7	169.3	131.5	134.9	119.4	241.8	119.0	170.1	148.9	134.8	3.5	19.6	13.4
	Jun	151.0	147.0	138.8	151.8	151.4	122.2	131.8	164.4	129.9	126.4	132.3	258.3	122.0	171.7	156.1	146.9	2.8	21.9	13.9
	Jul	155.3	146.2	138.3	159.1	158.6	120.7	130.9	163.4	131.0	131.9	134.7	244.1	119.8	169.2	145.6	147.1	2.8	25.5	15.2
	Aug	157.1	142.1	136.5	164.7	164.2	126.1	128.5	155.1	132.6	131.6	128.3	242.0	122.2	181.2	147.7	145.8	1.2	24.4	16.3
	Sep	156.2	143.8	139.3	162.8	162.2	131.0	121.9	158.8	137.4	135.2	129.2	241.8	119.8	187.3	133.2	147.6	-0.6	22.5	17.4
	Oct	153.9	145.6	138.5	157.8	157.2	132.9	123.5	161.7	138.4	134.0	130.9	241.8	120.3	186.4	139.0	146.3	-1.5	18.1	17.9
	Nov	153.5	142.9	134.5	159.8	159.3	130.0	118.8	154.6	129.6	139.6	132.1	241.8	116.8	186.1	135.6	143.0	-0.3	14.9	18.1
	Dec	155.5	142.7	133.4	162.9	162.4	133.5	120.7	155.4	132.3	141.0	129.7	241.8	124.7	182.5	124.3	156.0	1.3	18.4	18.6
2006	Jan	153.1	146.0	137.9	157.6	157.1	136.8	117.7	157.0	134.2	138.0	139.9	241.8	126.1	184.4	124.8	150.2	-1.6	12.6	18.5
	Feb	158.6	159.0	140.9	156.9	156.4	132.9	122.5	190.5	134.3	145.7	130.3	241.8	115.1	178.3	131.0	138.2	3.6	15.5	18.5
	Mar	160.4	164.8	143.1	156.3	155.8	135.1	124.2	200.9	139.1	142.4	132.1	241.8	115.1	179.4	131.9	136.2	1.2	14.8	18.6
	Apr	161.6	165.9	148.2	158.0	157.5	136.0	127.9	199.3	142.4	141.3	134.7	241.8	115.7	184.1	128.2	142.4	0.7	13.9	18.3
	May	161.9	166.5	153.0	159.1	158.6	136.9	129.5	197.0	143.9	134.2	135.0	241.8	112.5	193.1	122.8	144.2	0.2	10.2	17.5
	Jun	163.9	170.7	157.9	159.4	159.0	137.3	132.2	204.9	144.6	135.1	137.5	241.8	118.9	181.5	123.5	144.0	1.2	8.5	16.3
	Jul	166.3	164.7	152.7	165.0	164.5	146.2	137.9	192.6	140.6	125.5	134.9	241.8	148.4	189.6	163.0	148.8	1.5	7.1	14.8
	Aug	171.2	168.8	153.2	170.5	169.9	154.7	138.2	195.1	146.0	132.3	139.1	241.8	153.8	207.7	177.3	149.3	2.9	9.0	13.5
	Sep	171.2	171.9	154.8	168.0	167.5	152.6	147.2	198.8	148.7	138.7	143.3	241.8	165.4	212.0	184.4	148.2	0.0	9.6	12.5
	Oct	171.7	175.0	157.9	166.8	166.4	152.3	150.5	203.4	147.7	146.6	148.0	241.8	166.4	197.9	181.5	153.6	0.3	11.5	12.0
	Nov	170.8	176.4	160.1	164.3	164.0	160.1	147.9	204.6	148.5	155.8	151.8	248.5	165.4	201.1	189.2	158.5	-0.5	11.3	11.7
	Dec	171.6	176.0	163.2	166.4	166.0	162.5	151.5	198.5	151.2	159.0	159.3	238.8	153.2	205.7	195.7	164.0	0.4	10.3	11.1
2007	Jan	171.3	178.2	164.2	164.6	164.3	172.1	149.5	201.0	150.1	154.3	168.1	241.9	148.5	221.4	197.8	159.5	-0.1	11.9	11.0
	Feb	173.1	178.2	165.3	167.8	167.5	172.7	151.2	199.4	149.8	151.5	167.5	240.0	143.7	229.5	197.3	154.3	1.1	9.2	10.5
	Mar	178.4	183.0	171.0	172.6	172.2	168.8	151.3	213.9	153.5	149.7	159.0	241.4	140.7	218.4	189.2	188.7	3.1	11.2	10.3
	Apr	179.7	183.2	171.0	174.5	174.0	170.7	151.2	214.4	156.3	145.0	157.6	241.8	142.7	238.7	194.0	189.4	0.7	11.2	10.1
	May	182.0	190.8	176.8	173.3	173.1	174.2	142.5	227.1	158.2	134.9	176.8	241.9	141.9	236.7	181.2	179.1	1.3	12.4	10.3
	Jun	183.5	190.1	174.4	175.6	175.4	173.2	141.5	223.0	161.9	143.6	174.2	241.8	148.6	235.7	211.6	167.9	0.8	12.0	10.6
	Jul	184.0	194.6	177.2	173.6	173.3	171.4	144.2	231.9	164.2	145.4	173.8	241.8	151.5	253.8	213.0	168.3	0.3	10.7	10.9
	Aug	188.4	197.1	180.2	178.8	178.5	178.2	147.2	235.2	168.1	149.9	173.1	242.6	151.6	253.4	218.9	171.4	2.4	10.1	11.0
	Sep	186.9	196.32	180.23	176.9	176.62	177.55	146.24	233.01	166.3	152.05	176.3	241.8	150.9	243.18	221.7	173.35	-0.8	9.1	10.9
	Oct	186.1	196.5	184.9	175.8	175.5	176.6	149.2	230.0	169.3	160.4	179.4	241.8	148.7	265.1	224.2	177.1	-0.4	8.4	10.6
	Nov	188.6	198.5	186.7	178.7	178.4	177.5	154.3	230.9	170.8	162.4	180.9	241.8	149.4	262.1	231.1	179.9	1.3	10.4	10.6
	Dec	191.4	201.3	188.7	181.4	181.2	178.8	157.6	234.3	172.7	162.5	184.6	247.5	151.8	255.9	230.7	179.8	1.5	11.6	10.7
2008	Jan	193.1	199.5	190.0	185.8	185.6	179.9	153.7	233.0	172.3	162.4	173.7	247.6	152.3	265.4	232.7	179.9	0.9	12.7	10.7
	Feb	195.9	201.8	191.6	188.9	188.6	181.2	156.0	236.6	173.2	164.0	173.1	247.6	153.6	257.4	232.8	181.7	1.4	13.1	11.1

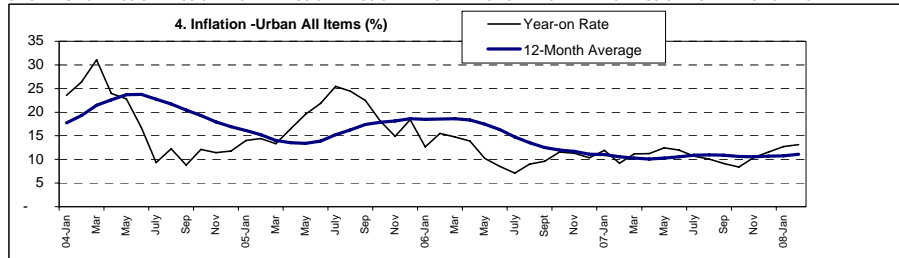
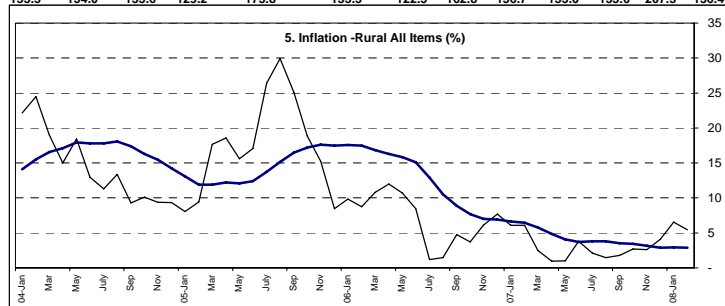


Table 4 Rural Consumer Price Index (Base MAY 2003 = 100)

	All Items	All Items less Farm Produce	All Items less Farm Produce and Energy	Food	Food & Non-Alcoholic Bev.	Alcoholic Beverage, Tobacco and Kola	Clothing and Footwear	Housing, Water, Electricity, Gas and Other Fuel	Health	Transport	Communication	Recreation & Culture	Education	Restaurant & Hotels	Miscellaneous Goods & Services	Month-on (%)	Year-on (%)	12-month average (%)	
Weights	1000.0	402.6	335.9	640.1	648.3	23.9	30.4	184.5	35.5	15.7	39.0	0.9	7.1	1.6	10.3	3.0			
2004																			
Jan	119.1	136.7	122.4	109.0	109.3	108.1	112.3	141.5	106.8	135.2	115.8	107.7	181.7	153.0	120.6	152.3	0.9	22.1	14.1
Feb	119.6	138.3	122.5	109.2	109.6	109.6	110.8	147.2	104.5	132.7	112.4	107.9	175.8	122.5	123.0	166.2	0.4	24.5	15.5
Mar	113.0	127.1	128.2	105.6	106.0	108.6	108.9	130.0	110.2	130.8	115.6	108.1	179.7	130.1	124.5	154.1	-5.5	19.0	16.6
Apr	114.1	120.4	115.7	110.7	111.1	106.0	111.0	126.3	105.2	129.6	116.2	108.0	118.2	115.4	106.0	125.1	1.0	15.0	17.1
May	118.5	123.8	118.0	116.2	116.4	109.5	111.1	128.0	104.6	125.8	110.2	125.3	117.2	111.4	117.4	122.8	3.8	18.5	17.9
June	118.3	119.0	118.5	118.6	118.6	108.3	108.5	124.5	106.7	115.3	109.9	132.3	117.0	103.8	116.1	115.2	-0.1	13.0	17.8
July	120.1	128.3	118.4	116.1	116.3	110.5	111.1	131.9	114.5	123.1	127.3	201.8	113.7	100.1	117.7	126.3	1.5	11.3	17.8
Aug	120.4	125.2	122.1	117.5	117.6	119.0	114.9	133.9	112.6	119.2	132.5	196.6	114.2	107.7	113.7	116.6	0.3	13.4	18.1
Sep	122.2	124.5	122.1	121.0	121.1	110.3	115.5	134.1	109.7	112.7	124.8	221.6	117.2	121.3	115.0	119.2	1.4	9.3	17.4
Oct	125.0	130.5	123.7	121.2	121.4	121.4	115.5	143.4	115.8	118.4	124.1	237.3	119.9	118.2	113.1	127.5	2.3	10.1	16.3
Nov	125.0	129.7	126.5	122.5	122.6	112.0	116.3	143.4	110.9	119.6	125.9	237.9	118.7	128.8	116.2	125.3	0.0	9.4	15.4
Dec	129.1	138.1	123.1	124.2	124.4	112.9	109.7	153.7	114.4	110.3	116.6	237.8	117.3	102.8	118.4	126.6	3.3	9.3	14.2
2005																			
Jan	128.7	135.4	123.1	124.6	124.7	118.4	112.3	152.9	112.2	120.2	120.9	221.2	123.5	129.7	120.6	123.7	-0.3	8.0	13.1
Feb	130.8	135.0	126.5	128.6	128.7	114.2	112.8	147.6	115.5	121.1	115.1	238.2	117.8	129.4	120.9	132.9	1.7	9.4	11.9
Mar	132.9	131.2	128.3	134.2	134.1	116.1	115.5	145.0	116.4	123.8	105.8	233.9	119.5	122.3	122.6	130.5	1.6	17.7	11.9
Apr	135.3	137.5	133.2	134.0	134.0	115.7	113.0	155.9	115.3	124.1	131.4	237.3	118.0	133.1	126.3	137.5	1.8	18.6	12.2
May	136.9	142.4	135.5	133.9	133.9	120.4	113.3	158.4	124.3	120.4	132.7	237.3	123.9	133.1	126.8	129.7	1.2	15.6	12.1
Jun	138.5	139.2	139.4	137.3	137.3	117.3	113.5	150.9	124.0	121.8	123.7	232.3	123.4	134.6	129.2	133.4	1.2	17.1	12.4
Jul	151.8	140.2	138.4	158.7	158.4	125.2	115.2	156.1	130.9	123.4	128.1	243.4	114.1	124.7	124.8	126.0	9.6	26.4	13.7
Aug	156.5	141.2	137.4	165.0	164.4	119.9	114.8	157.3	134.1	123.6	128.5	235.0	116.1	123.9	130.4	132.6	3.1	29.9	15.1
Sep	152.9	145.9	139.9	155.7	155.6	121.5	111.0	161.7	121.1	124.7	119.6	207.5	124.8	126.8	135.3	139.2	-2.3	25.1	16.5
Oct	148.6	144.6	140.8	150.5	150.3	118.5	117.1	162.5	124.6	123.0	138.7	192.7	120.6	120.0	141.0	128.4	-2.8	18.8	17.2
Nov	144.0	142.5	136.8	144.1	144.0	122.5	122.8	159.3	126.2	128.8	125.3	212.7	118.1	112.2	141.3	147.3	-3.1	15.2	17.6
Dec	140.0	140.7	134.4	138.2	137.9	123.7	104.9	161.0	128.2	136.5	130.2	206.1	116.1	131.9	120.4	135.2	-2.8	8.5	17.5
2006																			
Jan	141.3	142.1	138.6	140.7	140.7	128.1	112.9	157.9	125.4	136.8	143.4	156.8	121.4	136.5	120.1	143.1	0.9	9.8	17.6
Feb	142.3	146.8	141.8	140.3	140.4	126.8	120.8	165.4	128.5	148.9	133.1	210.4	113.6	120.1	120.8	139.1	0.7	8.7	17.5
Mar	147.3	152.4	143.7	144.8	144.9	123.8	114.3	171.3	124.1	152.5	138.5	211.3	115.6	119.0	130.5	120.9	3.5	10.8	16.9
Apr	151.6	161.2	148.6	145.3	145.1	124.7	120.0	183.1	124.2	142.6	140.7	208.4	118.9	103.6	128.3	125.4	2.9	12.0	16.3
May	151.6	164.0	154.0	145.0	145.1	128.0	111.9	178.3	122.9	125.3	150.8	197.4	120.0	106.3	129.3	127.2	0.0	10.7	15.8
Jun	150.3	156.6	159.0	146.4	146.3	127.9	116.5	180.3	126.7	126.1	144.8	202.4	121.9	116.0	132.8	144.4	-0.9	8.5	15.1
Jul	153.6	159.8	162.3	149.1	149.0	132.1	126.5	184.0	125.5	120.0	145.0	209.6	119.8	109.0	134.4	131.6	2.2	1.2	12.9
Aug	158.8	159.0	153.6	158.2	158.1	131.3	126.0	182.3	125.3	148.7	143.6	209.3	120.7	119.0	136.4	150.6	3.3	1.5	10.5
Sep	160.1	155.8	155.2	162.9	162.5	140.7	121.1	177.9	127.1	148.5	157.6	211.7	120.2	133.7	134.8	143.1	0.9	4.7	8.9
Oct	154.1	150.5	158.6	157.0	156.8	135.6	134.1	165.5	123.5	155.3	150.4	207.9	154.1	154.0	168.0	137.9	-3.8	3.7	7.7
Nov	152.9	152.8	161.4	153.2	153.2	138.7	129.3	165.3	130.3	146.6	149.8	209.2	136.8	138.7	153.6	145.4	-0.8	6.1	7.0
Dec	150.8	161.3	165.0	144.4	144.3	140.5	140.4	175.1	138.2	146.8	163.5	211.7	134.2	121.0	175.7	145.0	-1.3	7.7	6.9
2007																			
Jan	149.9	167.9	153.4	138.2	138.4	137.7	129.8	182.9	137.3	144.3	169.0	213.5	139.2	129.6	162.2	158.5	-0.6	6.1	6.6
Feb	150.9	162.3	149.4	143.2	143.4	140.2	131.6	175.1	130.4	143.0	179.9	219.8	138.5	124.3	177.7	125.8	0.7	6.1	6.4
Mar	150.9	164.4	152.7	142.9	143.1	157.7	130.3	179.5	141.5	136.3	165.8	206.4	132.2	136.6	170.5	148.6	0.0	2.5	5.8
Apr	153.0	166.3	152.5	144.1	144.6	144.8	136.5	183.1	138.4	132.3	169.7	210.9	131.3	129.3	173.7	155.0	1.4	1.0	4.9
May	153.2	164.5	149.7	145.1	145.5	139.5	133.9	180.1	143.1	132.7	165.7	213.2	136.7	122.5	191.4	156.3	0.1	1.0	4.1
Jun	156.0	170.4	151.2	147.6	147.9	139.4	128.8	190.4	130.5	129.9	186.5	209.0	141.8	122.8	201.3	140.4	1.9	3.8	3.7
Jul	156.9	169.9	150.8	148.7	149.1	138.8	133.0	191.2	132.8	126.6	163.5	209.6	139.7	127.1	208.3	143.7	0.5	2.1	3.8
Aug	161.1	172.8	154.3	153.0	153.4	142.8	130.2	195.1	133.8	149.4	167.2	210.0	141.6	122.3	193.0	145.6	2.7	1.5	3.8
Sep	163.0	169.4	152.4	158.4	158.7	145.3	133.3	190.8	133.3	136.1	173.0	192.3	138.2	109.6	187.1	154.1	1.2	1.8	3.5
Oct	158.2	165.4	144.9	154.0	154.4	138.4	137.3	184.6	133.8	144.2	147.0	154.4	141.7	129.8	202.7	140.4	-2.9	2.7	3.4
Nov	156.9	160.0	139.9	155.2	155.7	136.4	130.4	172.1	138.8	128.5	154.5	211.0	141.5	135.7	203.9	127.6	-0.9	2.6	3.2
Dec	157.0	158.9	138.6	155.9	156.4	133.4	127.2	170.3	131.5	126.4	149.9	207.0	134.3	129.5	213.6	134.3	0.1	4.1	2.9
2008																			
Jan	159.7	164.9	145.3	155.6	156.0	140.4	130.7	176.4	133.0	125.3	152.0	157.7	140.6	127.6	200.4	138.6	1.7	6.5	2.9
Feb	159.2	167.4	152.2	153.5	154.0	135.6	129.2	175.8	133.3	122.5	162.8	156.7	135.0	133.6	207.3	136.4	-0.3	5.5	2.9



**Table 5 Combined Urban And Rural State Consumer Price Index
(Base Period: May 2003 = 100)**

State	Feb-07		Jan-08		Feb-08	
	Food	All Items	Food	All Items	Food	All Items
Abia	159.0	170.4	159.2	177.6	158.7	166.9
Abuja	167.9	175.7	182.2	173.1	186.2	178.3
Adamawa	158.1	168.9	179.9	193.9	169.9	187.1
Akwa Ibom	175.5	173.5	181.9	173.5	169.6	165.0
Anambra	153.0	161.9	175.9	180.7	167.1	175.4
Bauchi	122.8	138.6	166.8	166.6	165.3	167.8
Bayelsa	145.1	152.8	172.5	175.2	181.3	181.0
Benue	169.8	164.8	142.4	148.3	128.1	137.1
Borno	156.5	156.3	156.5	159.1	153.4	160.8
Cross River	195.7	207.0	188.3	205.2	171.9	207.3
Delta	155.1	170.5	170.1	168.2	162.5	161.4
Ebonyi	165.8	160.4	158.0	159.2	169.2	169.5
Edo	162.8	167.4	159.8	166.2	159.3	167.7
Ekiti	151.9	146.5	161.0	166.6	153.0	165.1
Enugu	159.9	175.7	235.2	210.4	172.9	178.7
Gombe	106.3	126.7	160.5	197.9	168.0	202.2
Imo	200.3	191.8	180.3	180.2	171.3	177.2
Jigawa	142.0	155.3	169.8	168.0	182.9	190.0
Kaduna	123.6	139.4	149.2	157.9	153.9	166.1
Kano	133.9	154.5	153.7	191.2	170.6	207.1
Katsina	146.0	160.1	164.5	165.5	173.2	180.4
Kebbi	151.9	154.2	158.6	176.7	177.7	176.9
Kogi	157.4	162.3	170.2	173.2	159.7	167.6
Kwara	142.7	144.0	131.5	139.9	154.3	156.1
Lagos	167.5	175.4	176.7	195.9	178.3	198.3
Nassarawa	141.2	151.1	194.4	191.5	182.9	184.7
Niger	150.9	153.1	160.2	154.0	152.7	145.7
Ogun	148.6	151.8	141.5	148.0	153.0	157.5
Ondo	171.0	164.7	186.2	184.0	181.3	185.9
Osun	155.7	162.8	166.0	167.0	181.0	180.1
Oyo	189.3	179.3	166.6	176.7	169.3	170.8
Plateau	149.4	159.5	190.2	192.4	191.4	193.6
Rivers	165.4	161.9	166.4	161.0	166.2	163.8
Sokoto	130.7	156.9	151.2	176.3	143.9	176.6
Taraba	134.7	137.0	151.0	146.8	141.4	149.8
Yobe	140.2	151.1	155.5	158.9	169.0	161.6
Zamfara	128.9	155.4	158.1	186.6	168.4	186.6

Note: Indices may not be used for inter-state price comparison because market baskets differ from state to state

Table 5 Composite CPI Component Contribution To Overall Change

February-08

Code	Weights	Month-on		Year-on		12-Month Average	
		Change %	Contribution	Change %	Contribution	Change %	Contribution
All Items	1000.0	0.3	0.3	8.0	8.0	5.5	5.5
All Items less Farm Produce.	409.5	1.4	0.6	6.4	2.8	7.5	3.2
All Items less Farm Produce & Energy	335.9	3.3	1.0	6.4	2.1	1.9	0.6
Food	637.6	-0.5	-0.3	8.7	5.2	3.3	2.1
Food & Non Alcoholic Beverages	644.1	-0.5	-0.3	8.8	5.4	3.6	2.2
Alcoholic Beverage, Tobacco & Kola	20.6	-1.0	0.0	1.4	0.0	11.4	0.2
Clothing & Footwear	32.1	0.3	0.0	0.9	0.0	5.9	0.2
Housing Water, Electricity, Gas & Other Fuel	181.0	0.7	0.2	10.3	2.2	9.3	2.0
Furnishings & Household Equipment & Maintenance	38.2	0.3	0.0	7.7	0.3	8.8	0.3
Health	13.6	-0.6	0.0	-4.0	-0.1	-0.6	0.0
Transport	42.4	2.1	0.1	-1.4	-0.1	14.4	0.6
Communication	1.1	-0.3	0.0	-13.8	0.0	-3.3	0.0
Recreation & Culture	8.9	-2.0	0.0	1.3	0.0	6.2	0.0
Education	2.1	0.2	0.0	10.1	0.0	14.3	0.0
Restaurant & Hotels	12.9	2.0	0.0	17.2	0.3	31.8	0.4
Miscellaneous Goods & Services	3.0	-0.3	0.0	12.9	0.0	10.5	0.0

CPI Composite: Contribution: Month-on Change

Data Columns

	<i>Weights</i>	Jan-08	Feb-08	% Change	Contrib (% p)
All Items	1000.0	169.80	170.25	0.27	0.27
All Items less Farm Produce.	409.5	175.35	177.77	1.38	0.58
All Items less Farm Produce & Energy	335.9	158.84	164.07	3.29	1.03
Food	637.6	162.89	162.07	-0.50	-0.31
Food & Non Alcoholic Beverages	644.1	163.16	162.37	-0.48	-0.30
Alcoholic Beverage, Tobacco & Kola	20.6	161.04	159.43	-1.00	-0.02
Clothing & Footwear	32.1	142.47	142.90	0.30	0.01
Housing Water, Electricity. Gas & Other Fuel	181.0	205.11	206.61	0.73	0.16
Furnishings & Household Equipment & Maintanance.	38.2	147.72	148.21	0.33	0.01
Health.	13.6	141.67	140.83	-0.59	-0.01
Transport	42.4	165.93	169.43	2.11	0.09
Communication	1.1	197.74	197.17	-0.29	0.00
Recreation & Culture.	8.9	145.26	142.42	-1.96	-0.01
Education	2.1	182.61	183.03	0.23	0.00
Restaurant & Hotels	12.9	213.30	217.51	1.97	0.03
Miscellaneous Goods & Sevices	3.0	156.22	155.72	-0.32	0.00
Discrepancy					0.31

CPI Composite: Contribution: Year-on Change

	<i>Weights</i>	Data Columns		% Change	Contrib (% p)
		Feb-07	Feb-08		
All Items	1000.0	157.6	170.25	8.05	8.05
All Items less Farm Produce.	409.5	167.1	177.77	6.36	2.76
All Items less Farm Produce & Energy	335.9	154.2	164.07	6.41	2.11
Food	637.6	149.1	162.07	8.68	5.24
Food & Non Alcoholic Beverages	644.1	149.2	162.37	8.82	5.38
Alcoholic Beverage, Tobacco & Kola	20.6	157.2	159.43	1.42	0.03
Clothing & Footwear	32.1	141.6	142.90	0.90	0.03
Housing Water, Electricity, Gas & Other Fuel	181.0	187.4	206.61	10.26	2.21
Furnishings & Household Equipment & Maintenance.	38.2	137.7	148.21	7.67	0.26
Health.	13.6	146.7	140.83	-4.02	-0.05
Transport	42.4	171.9	169.43	-1.44	-0.07
Communication	1.1	228.8	197.17	-13.81	-0.02
Recreation & Culture.	8.9	140.6	142.42	1.31	0.01
Education	2.1	166.3	183.03	10.09	0.02
Restaurant & Hotels	12.9	185.5	217.51	17.24	0.26
Miscellaneous Goods & Services	3.0	137.9	155.72	12.91	0.03

CPI Composite: Contribution: 12 Month average-on Change

Data Columns

	<i>Weights</i>	Feb-07	Feb-08	% Change	Contrib (% p)
All Items	1000.0	157.26	165.98	5.54	5.54
All Items less Farm Produce.	409.5	162.49	174.70	7.51	3.18
All Items less Farm Produce & Energy	335.9	155.58	158.47	1.85	0.62
Food	637.6	152.57	157.64	3.32	2.05
Food & Non Alcoholic Beverages	644.1	152.42	157.88	3.58	2.23
Alcoholic Beverage, Tobacco & Kola	20.6	142.91	159.15	11.37	0.21
Clothing & Footwear	32.1	133.05	140.86	5.87	0.16
Housing Water, Electricity. Gas & Other Fuel	181.0	188.34	205.86	9.30	2.02
Furnishings & Household Equipment & Maintanance.	38.2	134.73	146.64	8.85	0.29
Health.	13.6	142.26	141.42	-0.59	-0.01
Transport	42.4	148.40	169.80	14.42	0.58
Communication	1.1	223.88	216.43	-3.33	-0.01
Recreation & Culture.	8.9	133.88	142.18	6.20	0.05
Education	2.1	153.74	175.75	14.32	0.03
Restaurant & Hotels	12.9	154.58	203.68	31.76	0.40
Miscellaneous Goods & Sevices	3.0	143.20	158.17	10.45	0.03