



NATIONAL BUREAU OF STATISTICS

Consumer Price Index

January 2022

(BASE PERIOD NOVEMBER 2009 = 100)



Report Date: February 2022

Data Source: National Bureau of Statistics (NBS)

CONTENT

Brief Methodology	3
All Item Index	7
Food Index	12
All Items Less Farm Produce	14
State Profile	15
Appendix	18
Contact	23

BRIEF METHODOLOGY

The CPI measures the average change over time in prices of goods and services consumed by people for day-to-day living. The construction of the CPI combines economic theory, sampling and other statistical techniques using data from other surveys to produce a weighted measure of average price changes in the Nigerian economy. The weighting occurs to capture the importance of the selected commodities in the entire index. The production of the CPI requires skills of economists, statisticians, computer scientists, data collectors and others.

Key in the construction of the price index is the selection of the market basket of goods and services. Every month, 10,534 informants spread across the country provide price data for the computation of the CPI. The market items currently comprise of 740 goods and services regularly priced. The first stage in the calculation of the CPI is the collection of prices on each item (740 goods and services) from outlets in each sector (rural or urban) for each state. Prices are then averaged for each item per sector across the state. The next step is to use the average price to calculate the basic index for each commodity: The current year price of each commodity is compared with a base year's price to obtain a relative price.

Next, we use the Laspeyres formula to compute an aggregated index for each class (which has a multitude of commodities which have similar consumption purposes): Here the sum of the product of weights (obtained from the expenditure survey) and relative prices for each item is divided by the sum of the weight of the items in that class, and the result multiplied by 100 gives the required index number. This index number is still classified according to the urban or rural classification sector for each of the 36 states and the FCT. This yields 85 classes then 48 groups which are then reclassified into 12 Divisions to derive:

1. The Country Composite Index
2. The Urban National Index
3. The Rural National Index
4. The Combined Urban and Rural State Composite Index

The survey methodology generates 3774 all items indices for all states and the FCT.

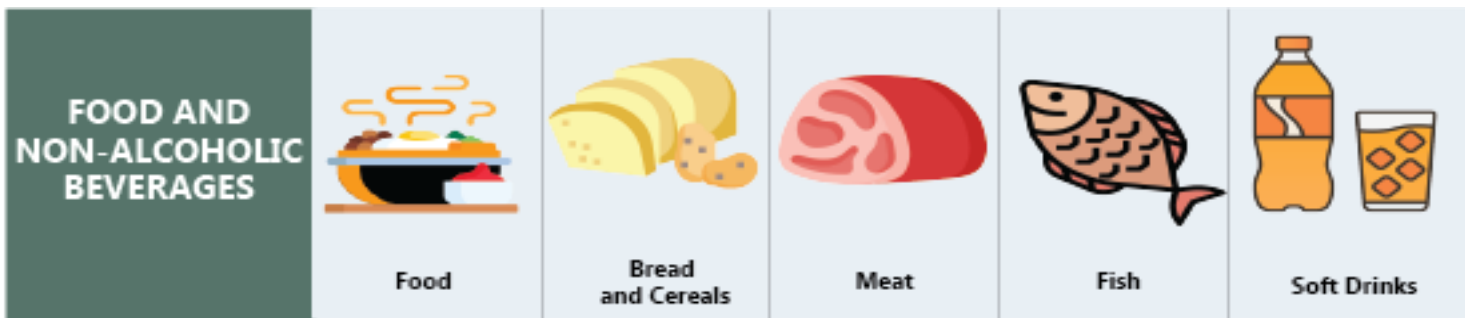
This edition of the Statistical News contains the revised Consumer Price Index (CPI) based on Nigeria Living Standard Survey (NLSS) 2003/2004. The consumption expenditure data were re-valued to November 2009, which is the base period for the revised CPI.

The May 2003 and September 1985 based indices are being continued using factors derived from the new CPI. These indices will yield the same price change for any commodity group contained in all the series.

A new sub index – Imported Food Index- is available in the revised CPI.

Note: The urban and rural indices were weighted with the ratio of their populations to the national i.e., 0.455 and 0.545 respectively to compute the composite indices at the 12 Classification of Individual Consumption by Purpose (COICOP) functions and all items levels. This may cause variance between a recalculated all items index using the weights and All Items index published, because the weights were computed only from consumption expenditure survey result. The following breakdown highlights a non-exhaustive list of the components of the current CPI:

The following breakdown highlights a non-exhaustive list of the components of the current CPI:



HOUSING, WATER, ELECTRICITY AND GAS



Actual and imputed rentals for housing



Water supply



Liquid fuel



Electricity



Gas

FURNISHINGS, HOUSEHOLD EQUIPMENT



Furniture and furnishings



Household textiles



Repair of household appliances



Carpets and other floor coverings



Non-durable household goods

HEALTH



Pharmaceutical products



Medical services



Dental services



Hospital services



Paramedical services

TRANSPORT



Motor cars



Motor cycles



Passenger transport by air



Passenger transport by road



Passenger transport by sea and inland waterways

COMMUNICATION



Postal services



Telephone and telefax equipment



Telephone and telefax services

RECREATION AND CULTURE



Photographic development



Musical instrument



Recreational and sporting services



Games of chance



Audio-visual, photographic and information processing equipment

EDUCATION



Books & stationery

RESTAURANTS AND HOTELS



Accommodation services



Catering services

MISCELLANEOUS GOODS AND SERVICES



Hairdressing salons and personal grooming establishments



Jewellery, clocks and watches



Appliances, articles and products for personal care



Insurance



Other services

ALL ITEMS INDEX

The consumer price index, (CPI) which measures inflation increased to 15.60 percent (year-on-year) in January 2022. This is 0.87 percent points lower than the rate recorded in January 2021 (16.47) percent. This shows that headline inflation rate slowed down in January when compared to the same month in the previous year. Increases were recorded in all COICOP divisions that yielded the Headline index.

On month-on-month basis, the Headline index increased to 1.47 percent in January 2022, this is 0.34 percent points lower than 1.82 percent recorded in December 2021.

The percentage change in the average composite CPI for the twelve-month period ending January 2022 over the average of the CPI for the previous twelve-month period was 16.87 percent, showing 0.08 percent point from 16.95 percent recorded in December 2021.

The urban inflation rate increased to 16.17 percent year-on-year in January 2022 from 17.03 percent recorded in January 2021, while rural inflation rate increased to 15.06 percent in January 2022 from 15.92 percent in January 2021.

On a month-on-month basis, the urban index rose to 1.53 percent in January 2022, down by 0.34 percent points from 1.87 percent the rate recorded in December 2021. The rural index also rose to 1.42 percent in January 2022, down by 0.35 percent points from 1.77 percent the rate recorded in December 2021.

The corresponding twelve-month year-on-year average percentage change for the urban index is 17.44 percent in January 2022. This is lower than 17.52 percent reported in December 2021, while the corresponding rural inflation rate in January 2022 is 16.31 percent compared to 16.40 percent recorded in December 2021.



NATIONAL BUREAU OF STATISTICS

HEADLINE CPI IN JANUARY 2022 ROSE BY

15.60%

YEAR-ON-YEAR

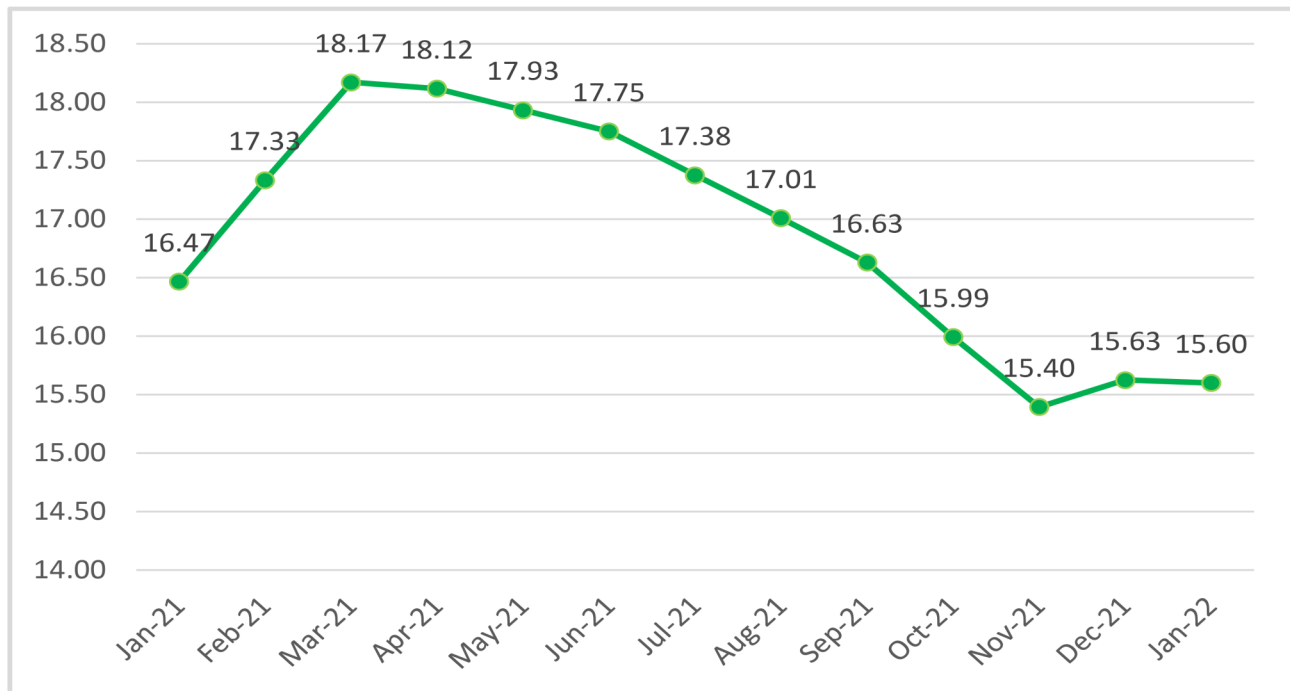
(FROM 16.47% IN JANUARY 2021)

1.47%

MONTH-ON-MONTH

(FROM 1.82% IN DECEMBER 2021)

CPI (%) HEADLINE 12-MONTH SERIES



The CPI (Consumer Price Index) measures the average change over time in prices of goods and services consumed by people for day-to-day living i.e it measures the inflation rate



NATIONAL BUREAU OF STATISTICS

URBAN

16.17%

YEAR-ON-YEAR

(FROM 17.03% IN JANUARY 2021)

1.53%

MONTH-ON-MONTH

(FROM 1.87% IN DECEMBER 2021)



URBAN AND RURAL INDEX IN JANUARY 2022



RURAL

15.06%

YEAR-ON-YEAR

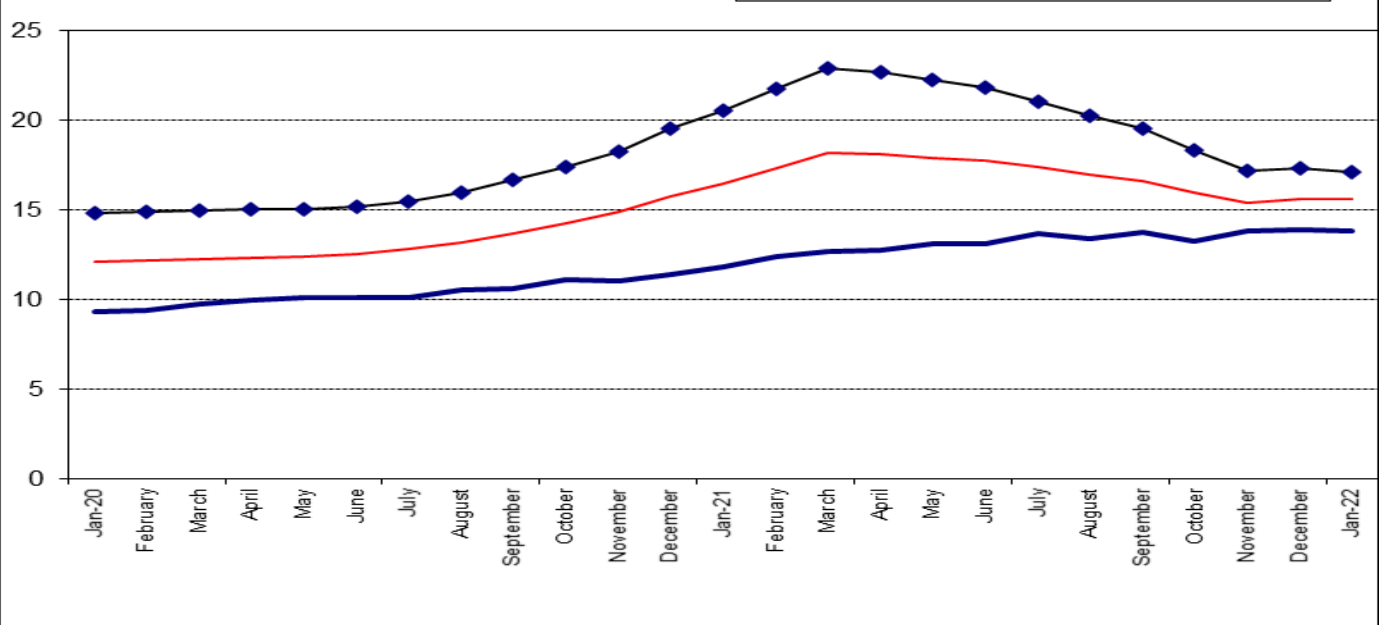
(FROM 15.92% IN JANUARY 2021)

1.42%

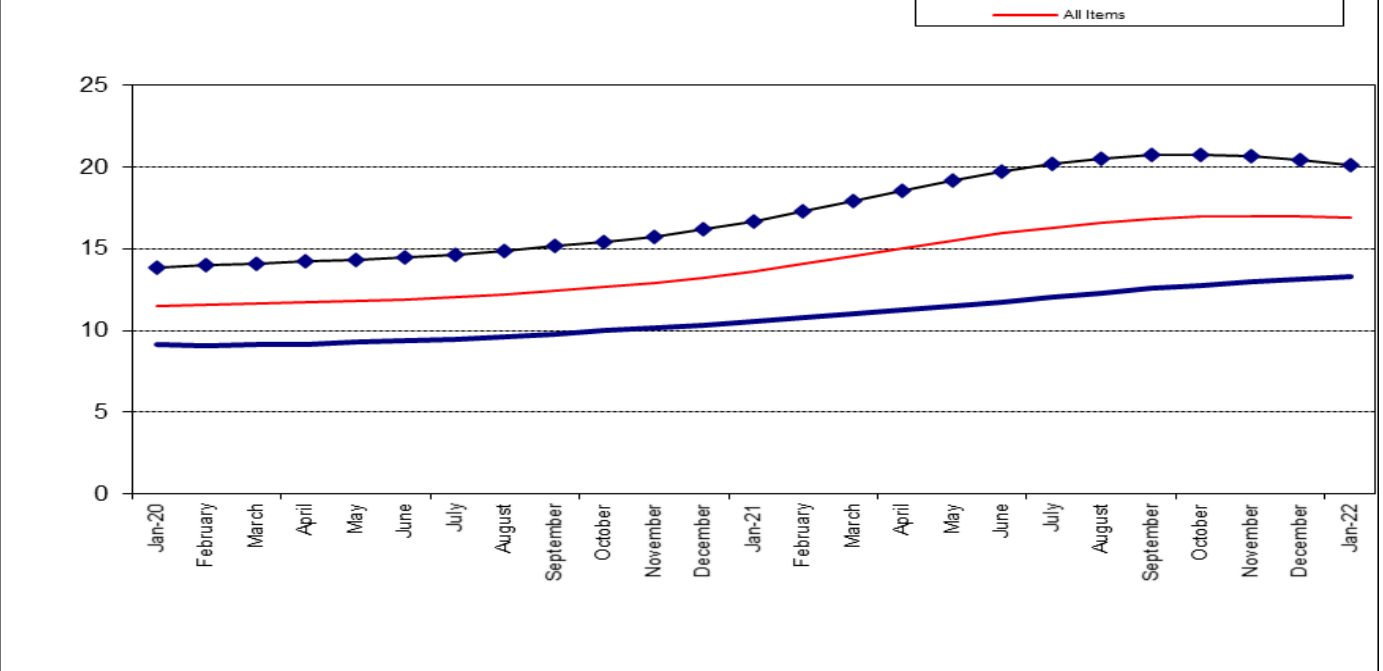
MONTH-ON-MONTH

(FROM 1.77% IN DECEMBER 2021)

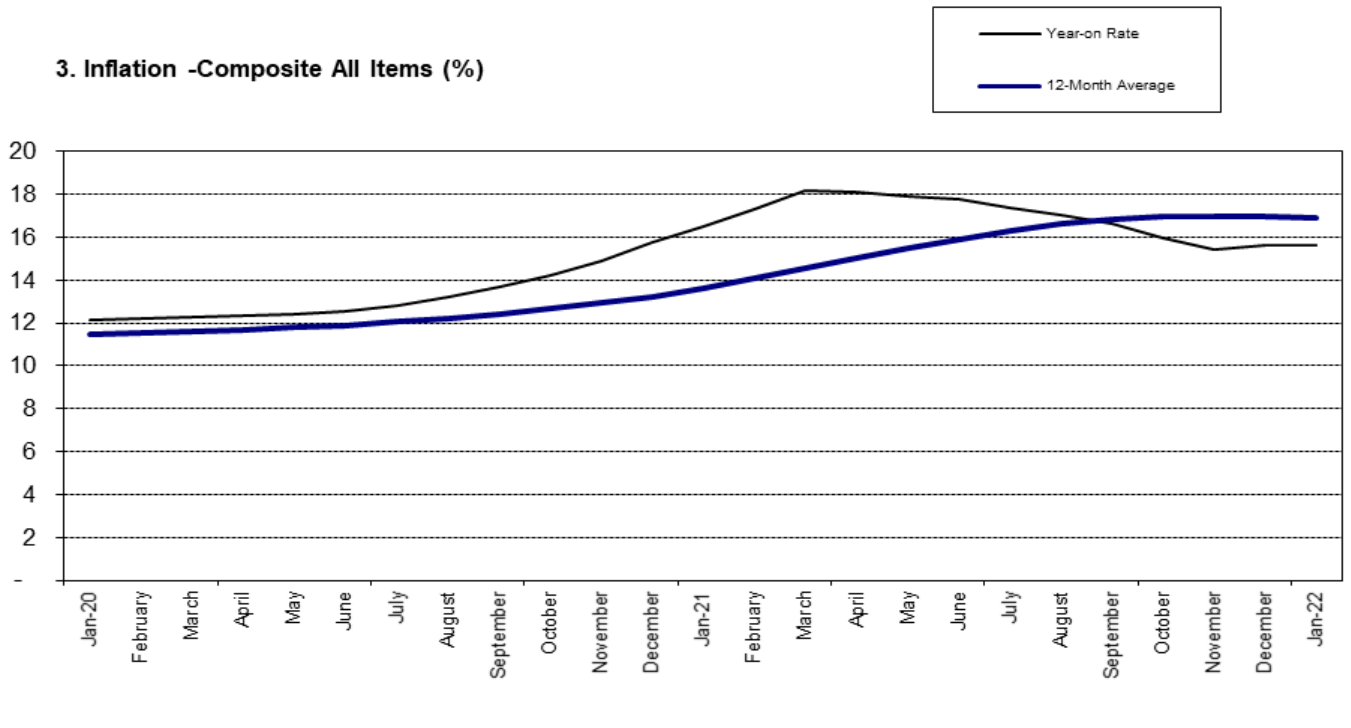
1. Inflation: Composite Year-on Change (%)



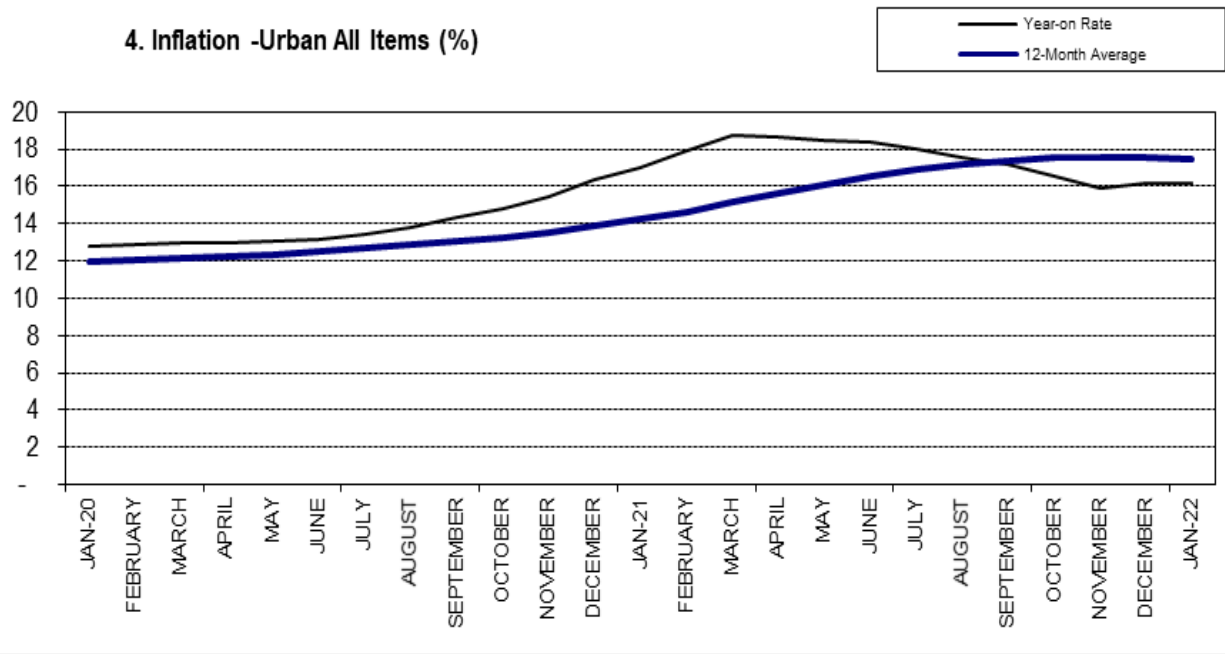
2. Inflation: Composite 12-Month Average Change (%)



3. Inflation -Composite All Items (%)



4. Inflation -Urban All Items (%)

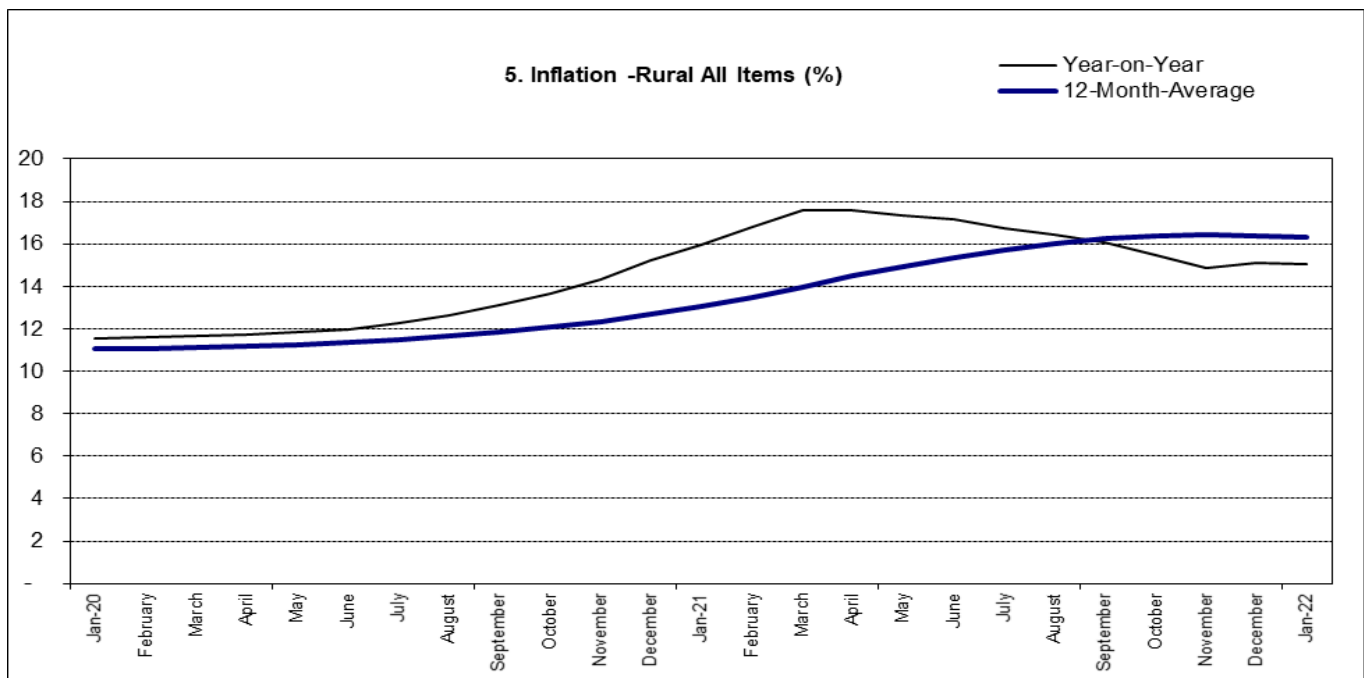


FOOD INDEX

The composite food index rose by 17.13 percent in January 2022 compared to 20.57 percent in January 2021. This rise in the food index was caused by increases in prices of Bread and cereals, Food product n.e.c, Potatoes, yam and other tuber, Soft drinks, Oils and fats and fruit.

On month-on-month basis, the food sub-index increased to 1.62 percent in January 2022, down by 0.57 percent points from 2.19 percent recorded in December 2021.

The average annual rate of change of the Food sub-index for the twelve-month period ending January 2022 over the previous twelve-month average was 20.09 percent, 0.31 percent points from the average annual rate of change recorded in December 2021 (20.40) percent.





NATIONAL BUREAU OF STATISTICS

FOOD SUB-INDEX IN JANUARY 2022 ROSE BY

17.13%

YEAR-ON-YEAR
(FROM 20.57% IN JANUARY 2021)

1.62%

MONTH-ON-MONTH
(FROM 2.19% IN DECEMBER 2021)

CORE SUB-INDEX IN JANUARY 2022 ROSE BY

13.87%

YEAR-ON-YEAR
(FROM 11.85% IN JANUARY 2021)

1.25%

MONTH-ON-MONTH
(FROM 1.12% IN DECEMBER 2021)

ALL ITEMS LESS FARM PRODUCE

The “All items less farm produce” or Core inflation, which excludes the prices of volatile agricultural produce stood at 13.87 percent in January 2022, up by 2.02 percent when compared to 11.85 percent, the rate recorded in January 2021.

On month-on-month basis, the core sub-index increased by 1.25 percent in January 2022. This was down by 0.13 percent when compared with 1.12 percent recorded in December 2021.

The highest increases were recorded in prices of Electricity, Liquid fuel, Wine, Tobacco, Spirit, Solid fuels, Cleaning, repair and hire of clothing, Shoes and other foot wear, Other services in respect of personal transport equipment, Other services n.e.c and pharmaceutical products.

The average 12-month annual rate of change of the index was 13.33 percent for the twelve-month period ending January 2022; this is 0.17 percent points higher than 13.16 percent recorded in December 2021.

STATE PROFILES

In analysing price movements under this section, note that the CPI is weighted by consumption expenditure patterns which differ across states. Accordingly, the weight assigned to a particular food or non-food item may differ from state to state making inter-state comparisons of consumption basket inadvisable and potentially misleading.

All Items Inflation

In January 2022, all items inflation on year-on-year basis was highest in Abuja (18.59%), Kogi (18.28%) and Bauchi (17.61%), while Kwara (12.94%), Niger (14.10%) and Oyo (14.19%) recorded the lowest rise.

On month on month basis however, January 2022, recorded the highest increases in Jigawa (2.45%), Kogi (2.34%) and Zamfara (2.32%), while Taraba (0.53%), Abia (0.69%) and Ondo (0.75%) recorded the lowest rise.

Food Inflation

The food inflation on a year-on-year basis was highest in Kogi (22.61%), Enugu (19.84%) and Akwa-Ibom (19.67%), while Sokoto (14.18%), Bauchi (14.63%) and Kaduna (15.01%) recorded the lowest rise in January 2022.

On month-on month-basis, the food inflation was highest in Borno (2.87%), Zamfara (2.62%) and Kogi (2.53%), while Abia (0.29%), Taraba (0.57%) and Ondo (0.58%) recorded the lowest rise in January 2022.

ALL ITEMS INFLATION

YEAR-ON-YEAR

HIGHEST RISE IN

FCT	▶	18.59%
KOGI	▶	18.28%
BAUCHI	▶	17.61%

SLOWEST RISE IN

KWARA	▶	12.94%
NIGER	▶	14.10%
OYO	▶	14.19%

MONTH-ON-MONTH

HIGHEST RISE IN

JIGAWA	▶	2.45%
KOGI	▶	2.34%
ZAMFARA	▶	2.32%

SLOWEST RISE IN

TARABA	▶	0.53%
ABIA	▶	0.69%
ONDO	▶	0.75%

FOOD INFLATION

YEAR-ON-YEAR

HIGHEST RISE IN

KOGI	▶	22.61%
ENUGU	▶	19.84%
AKWA IBOM	▶	19.67%

SLOWEST RISE IN

SOKOTO	▶	14.18%
BAUCHI	▶	14.63%
KADUNA	▶	15.01%

MONTH-ON-MONTH

HIGHEST RISE IN

BORNO	▶	2.87%
ZAMFARA	▶	2.62%
KOGI	▶	2.53%

SLOWEST RISE IN

ABIA	▶	0.29%
TARABA	▶	0.57%
ONDO	▶	0.58%

APPENDIX

Table 1 Composite Consumer Price Index (Base November 2009 = 100)

		All Items Index				All Items less Farm Produce				Food				
		Monthly	Month-on change (%)	Year-on change (%)	12-Month average change (%)	Monthly	Month-on change (%)	Year-on change (%)	12-Month average change (%)	Monthly	12-Month Average	Month-on change (%)	Year-on change (%)	12-Month average change (%)
2021	January	361.2	1.49	16.47	13.62	316.5	1.26	11.85	10.52	413.8	375.7	1.83	20.57	16.66
	February	366.8	1.54	17.33	14.05	320.3	1.21	12.38	10.77	421.6	382.0	1.89	21.79	17.25
	March	372.5	1.56	18.17	14.55	323.7	1.06	12.67	11.01	429.7	388.7	1.90	22.95	17.93
	April	376.1	0.97	18.12	15.04	326.9	0.99	12.74	11.25	433.9	395.3	0.99	22.72	18.58
	May	379.9	1.01	17.93	15.50	331.0	1.24	13.15	11.50	438.5	402.0	1.05	22.28	19.18
	June	384.0	1.06	17.75	15.93	333.6	0.81	13.09	11.75	443.4	408.6	1.11	21.83	19.72
	July	387.5	0.93	17.38	16.30	338.0	1.31	13.72	12.05	447.2	415.1	0.86	21.03	20.16
	August	391.5	1.02	17.01	16.60	340.6	0.77	13.41	12.29	451.9	421.5	1.06	20.30	20.50
	September	396.0	1.15	16.63	16.83	344.8	1.24	13.74	12.55	457.6	427.7	1.26	19.57	20.71
	October	399.9	0.98	15.99	16.96	347.6	0.80	13.24	12.73	461.8	433.7	0.91	18.34	20.75
	November	404.2	1.08	15.40	16.98	352.0	1.26	13.85	12.96	466.7	439.4	1.07	17.21	20.62
	December	411.5	1.82	15.63	16.95	355.9	1.12	13.87	13.16	477.0	445.3	2.19	17.37	20.40
2022	January	417.6	1.47	15.60	16.87	360.4	1.25	13.87	13.33	484.7	451.2	1.62	17.13	20.09

Table 2 Composite Consumer Price Index (Base November 2009 = 100)

	All Items	All Items less Farm Produce.	All Items less Farm Produce and Energy	Imported Food	Food	Food & Non-Alcoholic Bev.	Alcoholic Beverage, Tobacco and Kola	Clothing and Footwear	Housing, Water, Electricity, Gas and Other Fuel	Furnishings & Household Equipment Maintenance.	Health.	Transport	Communication	Recreation & Culture.	Education	Restaurants & Hotels	Miscellaneous Goods & Services	Month-on (%)	Year-on (%)	12-month average (%)
Weight	1000.0	513.10	405.55	132.88	507.06	518.00	10.87	76.50	167.34	50.30	30.04	65.08	6.80	6.87	39.44	12.12	16.63			
2021 January	361.2	316.5	309.0	394.2	413.8	411.0	268.0	328.1	323.9	291.0	285.9	319.4	181.1	238.2	288.7	250.9	289.4	1.5	16.47	13.6
February	366.8	320.3	312.8	399.4	421.6	418.7	271.0	331.9	326.8	294.2	289.7	323.5	182.6	240.6	291.6	253.3	292.6	1.5	17.33	14.1
March	372.5	323.7	316.1	404.8	429.7	426.7	274.1	335.7	329.8	297.5	293.6	327.6	184.1	243.1	294.5	255.8	295.9	1.6	18.17	14.6
April	376.1	326.9	319.5	410.1	433.9	430.9	277.0	339.6	332.1	300.9	296.9	331.2	185.7	245.7	297.2	258.3	299.1	1.0	18.12	15.0
May	379.9	331.0	323.7	415.5	438.5	435.4	279.7	343.5	334.4	304.3	300.2	334.8	187.2	248.3	299.9	260.9	302.4	1.0	17.93	15.5
June	384.0	333.6	326.4	421.1	443.4	440.3	282.6	347.6	336.9	307.8	303.6	338.5	188.8	251.0	302.9	263.6	305.7	1.1	17.75	15.9
July	387.5	338.0	331.1	426.7	447.2	444.1	285.3	351.8	339.7	311.3	307.0	342.3	190.4	253.6	306.0	266.3	309.0	0.9	17.38	16.3
August	391.5	340.6	333.4	432.5	451.9	448.8	287.8	355.7	342.5	314.5	310.1	346.0	192.0	256.2	309.1	269.0	312.2	1.0	17.01	16.6
September	396.0	344.8	337.8	438.4	457.6	454.4	290.7	359.7	345.4	317.9	313.3	349.8	193.6	258.7	312.3	271.8	315.5	1.1	16.63	16.8
October	399.9	347.6	340.5	444.3	461.8	458.5	293.8	364.0	348.7	321.8	316.9	354.2	195.2	261.3	315.7	274.7	318.9	1.0	15.99	17.0
November	404.2	352.0	344.7	450.4	466.7	463.4	296.9	368.2	352.1	325.6	320.4	358.5	196.8	264.2	319.1	277.9	322.8	1.1	15.40	17.0
December	411.5	355.9	348.4	456.5	477.0	473.5	301.3	373.3	356.7	329.6	324.3	363.0	198.5	267.6	322.9	281.1	326.8	1.8	15.63	17.0
2022 January	417.6	360.4	352.7	462.8	484.7	481.2	305.7	378.6	361.0	333.6	328.3	367.6	200.2	271.1	326.8	284.5	330.9	1.5	15.60	16.9

Table 3 Urban Consumer Price Index (Base November 2009 = 100)

	All Items	All Items less Farm Produce.	All Items less Farm Produce and Energy	Imported Food	Food	Food & Non-Alcoholic Bev.	Alcoholic Beverage, Tobacco and Kola	Clothing and Footwear	Housing, Water, Electricity, Gas and Other Fuel	Furnishings & Household Equipment Maintenance.	Health.	Transport	Communication	Recreation & Culture.	Education	Restaurants & Hotels	Miscellaneous Goods & Services	Month-on (%)	Year-on (%)	12-month average (%)
Weights	1000.00	552.64	418.67	155.45	476.88	490.59	11.19	65.50	191.51	49.81	27.40	74.54	10.14	7.14	40.05	14.49	17.65			
2021	370.4	323.3	314.2	402.4	425.1	421.3	265.9	340.2	340.2	297.6	295.5	346.3	183.0	249.6	295.0	262.8	301.9	1.52	17.03	14.23
January	376.3	326.6	317.4	407.8	433.5	429.6	269.1	344.6	343.2	301.1	299.7	351.0	184.6	252.3	298.1	265.5	305.4	1.58	17.92	14.66
February	382.3	330.7	321.4	413.3	442.2	438.2	272.5	348.9	346.2	304.8	303.9	355.7	186.3	255.1	301.2	268.1	309.0	1.60	18.76	15.15
March	386.1	333.6	324.4	418.8	446.7	442.6	275.4	353.0	348.7	308.4	307.5	359.8	188.0	257.9	304.0	270.8	312.5	0.99	18.68	15.63
April	390.1	338.4	329.6	424.4	451.6	447.5	278.2	357.3	351.2	311.9	311.1	363.8	189.6	260.7	306.9	273.7	316.0	1.04	18.51	16.09
May	394.4	341.8	333.0	430.1	456.9	452.7	281.1	361.9	353.8	315.7	314.7	368.0	191.4	263.7	310.2	276.7	319.6	1.09	18.35	16.51
June	398.2	346.3	337.8	435.9	461.2	456.9	284.0	366.4	356.7	319.4	318.5	372.3	193.1	266.7	313.5	279.6	323.3	0.98	18.01	16.89
July	402.5	349.7	341.1	441.8	466.3	462.0	286.7	370.8	359.7	323.1	321.8	376.6	194.8	269.6	316.9	282.6	326.8	1.06	17.59	17.19
August	407.3	354.2	345.9	447.9	472.6	468.2	289.7	375.1	362.7	326.8	325.2	381.2	196.5	272.4	320.4	285.7	330.5	1.21	17.19	17.41
September	411.5	358.4	350.3	454.0	477.0	472.6	293.0	379.9	366.0	331.0	329.1	386.3	198.3	275.3	324.1	289.0	334.3	1.02	16.52	17.53
October	416.1	362.4	354.0	460.2	482.4	477.9	296.3	384.4	369.5	335.1	332.9	391.2	200.0	278.6	327.8	292.6	338.8	1.12	15.92	17.55
November	423.8	366.8	358.1	466.5	493.7	489.0	300.9	389.9	374.1	339.3	337.0	396.4	201.8	282.3	331.8	296.1	343.2	1.87	16.17	17.52
December	430.3	371.1	362.1	473.0	502.3	497.5	305.6	395.4	378.4	343.7	341.2	401.6	203.7	286.1	336.0	299.8	347.9	1.53	16.17	17.44
2022																				

Table 4 Rural Consumer Price Index (Base November 2009 = 100)																					
	All Items	All Items less Farm Produce.	All Items less Farm Produce and Energy	Imported Food	Food	Food & Non-Alcoholic Bev.	Alcoholic Beverage, Tobacco and Kola	Clothing and Footwear	Housing, Water, Electricity, Gas and Other Fuel	Furnishings & Household Equipment Maintenance.	Health.	Transport	Communication	Recreation & Culture.	Education	Restaurants & Hotels	Miscellaneous Goods & Services	Month-on (%)	Year-on (%)	12-month average (%)	
Weights	1000.00	480.09	394.61	114.03	532.25	540.89	10.61	85.68	147.16	50.72	32.25	57.19	4.01	6.65	38.93	10.14	15.78				
2021 January	353.4	310.8	304.6	387.4	404.9	402.8	271.0	316.9	308.3	286.3	278.1	289.8	177.6	228.3	283.4	241.1	279.0	1.46	15.92	13.04	
February	358.7	315.0	309.0	392.4	412.2	410.0	273.8	320.3	311.2	289.3	281.7	293.2	179.0	230.5	286.1	243.3	282.0	1.50	16.77	13.48	
March	364.2	317.9	311.6	397.6	419.7	417.4	276.7	323.7	314.2	292.3	285.3	296.8	180.4	232.8	288.9	245.5	285.0	1.52	17.60	13.99	
April	367.7	321.3	315.4	402.8	423.7	421.5	279.5	327.3	316.3	295.5	288.4	299.8	181.8	235.2	291.5	247.9	288.0	0.95	17.57	14.48	
May	371.3	324.7	318.8	408.1	428.0	425.7	282.2	330.9	318.5	298.7	291.5	303.0	183.3	237.6	294.1	250.3	291.0	0.98	17.36	14.94	
June	375.1	326.8	320.9	413.5	432.6	430.3	284.9	334.6	320.8	302.0	294.6	306.2	184.7	239.9	296.9	252.8	294.1	1.02	17.16	15.36	
July	378.3	331.1	325.5	419.0	436.0	433.7	287.5	338.5	323.6	305.4	297.8	309.4	186.2	242.3	299.7	255.3	297.2	0.87	16.75	15.73	
August	382.1	333.1	327.0	424.7	440.4	438.1	289.9	342.1	326.3	308.2	300.7	312.5	187.7	244.6	302.6	257.7	300.2	0.99	16.43	16.03	
September	386.3	337.1	331.0	430.4	445.6	443.2	292.7	345.7	329.2	311.4	303.7	315.8	189.1	246.9	305.6	260.2	303.1	1.10	16.08	16.26	
October	389.9	338.6	332.4	436.3	449.5	447.1	295.7	349.6	332.3	315.0	307.0	319.6	190.6	249.3	308.7	262.9	306.2	0.95	15.48	16.39	
November	394.0	343.3	337.0	442.2	454.1	451.7	298.5	353.5	335.7	318.6	310.4	323.3	192.1	251.8	311.9	265.7	309.6	1.04	14.89	16.42	
December	401.0	346.8	340.3	448.2	463.6	461.0	302.8	358.3	340.3	322.3	314.0	327.1	193.7	254.9	315.5	268.7	313.2	1.77	15.11	16.40	
January 2022	406.7	351.5	344.9	454.3	470.6	468.0	307.1	363.3	344.6	326.1	317.8	331.1	195.3	258.2	319.2	271.9	316.9	1.42	15.06	16.31	

Table 5 Combined Urban And Rural State Consumer Price Index (Base Period: November 2009 = 100)

State	Jan-21		Dec-21		Jan-22		MoM		YoY	
	Food	All Items	Food	All Items	Food	All Items	Food	All Items	Food	All Items
Abia	407.4	357.6	475.0	414.3	476.4	417.2	0.29	0.69	16.93	16.64
Abuja	404.8	346.0	471.2	404.7	479.2	410.3	1.71	1.39	18.39	18.59
Adamawa	409.3	350.5	467.7	397.3	472.2	400.8	0.96	0.87	15.37	14.34
Akwa Ibom	407.7	355.9	477.8	410.5	487.9	417.8	2.12	1.78	19.67	17.39
Anambra	414.7	370.7	472.4	419.6	477.0	424.9	0.98	1.26	15.02	14.63
Bauchi	370.7	411.7	419.6	477.7	424.9	484.2	1.26	1.35	14.63	17.61
Bayelsa	414.3	365.5	482.4	418.2	489.8	423.3	1.54	1.23	18.22	15.83
Benue	417.8	359.1	481.8	408.2	493.4	417.3	2.41	2.22	18.10	16.21
Borno	412.4	345.9	467.2	391.4	480.6	399.8	2.87	2.15	16.54	15.58
Cross River	421.9	330.2	493.5	380.1	497.4	388.2	0.79	2.13	17.88	17.56
Delta	420.3	342.0	480.8	388.8	489.3	394.9	1.75	1.56	16.42	15.46
Ebonyi	421.8	374.3	493.9	427.4	504.3	433.2	2.11	1.34	19.57	15.73
Edo	416.1	368.2	478.7	421.9	487.0	428.5	1.74	1.55	17.05	16.37
Ekiti	414.0	336.1	482.2	384.9	489.8	390.3	1.57	1.41	18.31	16.14
Enugu	414.6	340.5	492.5	391.8	496.8	396.5	0.88	1.21	19.84	16.44
Gombe	406.5	362.1	476.7	418.2	484.7	424.8	1.69	1.58	19.23	17.33
Imo	408.6	328.6	472.8	373.7	484.1	378.4	2.41	1.26	18.49	15.17
Jigawa	401.5	362.8	463.2	414.2	474.5	424.4	2.45	2.45	18.17	16.96
Kaduna	416.8	373.5	471.6	423.3	479.3	428.6	1.64	1.25	15.01	14.74
Kano	419.5	375.6	480.3	426.0	486.2	430.1	1.23	0.96	15.90	14.52
Katsina	398.0	331.0	456.2	374.1	465.5	380.8	2.04	1.80	16.97	15.04
Kebbi	416.5	383.7	482.1	440.3	488.8	446.9	1.39	1.49	17.37	16.47
Kogi	438.7	395.7	524.7	457.4	537.9	468.1	2.53	2.34	22.61	18.28
Kwara	429.3	431.4	499.4	481.0	511.3	487.2	2.38	1.30	19.09	12.94
Lagos	424.3	377.4	491.3	427.6	500.4	434.2	1.86	1.55	17.95	15.05
Nassarawa	412.7	369.0	471.5	418.6	478.5	424.1	1.50	1.30	15.95	14.92
Niger	414.3	374.3	472.7	423.2	476.9	427.1	0.90	0.90	15.12	14.10
Ogun	426.1	388.4	488.5	440.9	497.1	446.9	1.75	1.35	16.65	15.05
Ondo	411.4	367.7	485.6	425.8	488.5	429.0	0.58	0.75	18.73	16.66
Osun	414.4	361.4	480.0	413.3	485.1	416.8	1.08	0.86	17.06	15.34
Oyo	428.5	388.2	486.6	437.0	494.2	443.3	1.55	1.44	15.33	14.19
Plateau	417.2	373.9	479.1	426.0	488.5	433.1	1.97	1.67	17.10	15.83
Rivers	421.8	364.0	480.9	412.8	488.6	418.0	1.61	1.24	15.83	14.82
Sokoto	427.9	372.4	482.0	419.7	488.5	425.3	1.37	1.35	14.18	14.23
Taraba	410.7	354.1	477.5	409.0	480.2	411.2	0.57	0.53	16.91	16.12
Yobe	415.4	372.7	475.6	423.1	484.4	431.0	1.86	1.85	16.61	15.63
Zamfara	414.4	372.4	475.7	423.7	488.2	433.6	2.62	2.32	17.81	16.43

Note: Indices may not be used for inter-state price comparison because market baskets differ from state to state

CONTACT



National Bureau of Statistics

Head Office

Plot 762 Independence Avenue,
Central Business District, Garki
Abuja.

Sunday J. Ichedi

Information Desk

Head, Communication & Public
Relations Department (C&PRD)
Phone: +2348037051701
sjichedi@nigerianstat.gov.ng

Moses Mathew

Statistical Information Officer

Phone: +2347069071157
matmoses@nigerianstat.gov.ng

Nuhu Joseph Waney II

Chief of Protocol

Phone: +2348037020063
jwnuhu@nigerianstat.gov.ng



@nigerianstat



NBSNigeria



Nbs_nigeria

