

CONSUMER PRICE INDEX

(BASE PERIOD NOVEMBER 2009 = 100)



No. 545
AUGUST 2015



NATIONAL BUREAU OF STATISTICS

BRIEF METHODOLOGY:

The CPI measures the average change over time in prices of goods and services consumed by people for day-to-day living. The construction of the CPI combines economic theory, sampling and other statistical techniques using data from other surveys to produce a weighted measure of average price changes in the Nigerian economy. The weighting occurs to capture the importance of the selected commodities in the entire index. The production of the CPI requires skills of economists, statisticians, computer scientists, data collectors and others.

Key in the construction of the price index is the selection of the market basket of goods and services. Every month, 10,534 informants spread across the country provide price data for the computation of the CPI. The market items currently comprise of 740 goods and services regularly priced.

The first stage in the calculation of the CPI is the collection of prices on each item (740 goods and services) from outlets in each sector (rural or urban) for each state. Prices are then averaged for each item according to sector across the state. The next step is to use the average price to calculate the basic index for each commodity: The current year price of each commodity is compared with a base year's price to obtain a relative price.

Next we use the Laspeyres formula to compute an aggregated index for each class (which has a multitude of commodities which have similar consumption purposes): Here the sum of the product of weights (obtained from the expenditure

survey) and relative prices for each item is divided by the sum of the weight of the items in that class, and the result multiplied by 100 gives the required index number. This index number is still classified according to the urban or rural classification sector for each of the 36 states and the FCT. This yields 85 classes then 48 groups which are then reclassified into 12 Divisions to derive:

1. The country composite index
2. The Urban National index
3. The Rural National index
4. The Combined Urban and Rural State Composite index

The survey methodology generates 3774 all items indices for all states and the FCT.

This edition of the Statistical News contains the revised Consumer Price Index (CPI) based on Nigeria Living Standard Survey (NLSS) 2003/2004. The consumption expenditure data were re-valued to November 2009, which is the base period for the revised CPI.

The May 2003 and September 1985 based indices are being continued using factors derived from the new CPI. All of these indices will yield the same price change for any commodity group contained in all the series. A new sub index – Imported Food Index – is available in the revised CPI.

Note: The urban and rural indices were weighted with the ratio of their populations to the national i.e. 0.455 and 0.545 respectively to compute the composite indices at the 12 COICOP functions and all items levels. This may cause variance between a recalculated all items index using the weights published on table 2 and the

published all items index because the published weights were computed only from consumption expenditure survey result. The following

breakdown highlights a non-exhaustive list of the components of the current CPI:

FOOD AND NON ALCOHOLIC BEVERAGES

Food

Bread and cereals

Meat

Fish

Milk, cheese and eggs

Oils and fats

Fruit

Vegetables

Potatoes, Yam & other tubers

Food products n.e.c

Coffee, tea and cocoa

Soft drinks

ALCOHOLIC BEVERAGES, TOBACCO AND KOLA

Spirits

Wine

Tobacco

Narcotics

CLOTHING AND FOOTWEAR

Clothing materials, other articles of clothing

Garments

Cleaning, repair and hire of clothing

Shoes and other footwear

Repair and hire of footwear

HOUSING, WATER, ELECTRICITY, GAS

Actual and imputed rentals for housing

Water supply

Miscellaneous services relating to the dwelling

Electricity

Gas

Liquid fuel

Solid fuels

FURNISHINGS, HOUSEHOLD EQUIPMENT

Furniture and furnishings

Carpets and other floor coverings

Repair of Furniture

Household textiles

Major household appliances whether electric or not

Repair of household appliances

Glassware, tableware and household utensils

Non-durable household goods
Domestic services and household services
HEALTH
Pharmaceutical products
Medical services
Dental services
Paramedical services
Hospital services
TRANSPORT
Motor cars
Motor cycles
Bicycles
Vehicle spare parts
Fuels and lubricants for personal transportation
Maintenance and repair of personal transport
Passenger transport by road
Passenger transport by air
Passenger transport by sea and inland waterways
COMMUNICATION
Postal services
Telephone and telefax equipment
Telephone and telefax services
RECREATION AND CULTURE
Audio-visual, photographic and information processing equipment
Photographic development
Musical instrument
Recreational and sporting services
Games of chance
EDUCATION
Books & stationery
RESTAURANTS AND HOTELS
Catering services
Accommodation services
MISCELLANEOUS GOODS AND SERVICES
Hairdressing salons and personal grooming establishments
Appliances, articles and products for personal care
Jewellery, clocks and watches
Insurance
Other services.

ALL ITEMS INDEX

In August, the Consumer Price Index (CPI) which measures inflation edged higher to 9.3% (year-on-year), from 9.2% in July. The marginal increase was as a result of slower increases in *Alcoholic Beverages, Tobacco and Kola; Health, Transport; and Recreation and Culture Divisions*. On a month-on-month basis, the pace of increases of food prices as reflected by the Food Sub-index has slowed, contributing to the relatively slower pace of increases reflected on the year-on-year rates between July and August.

The Food Sub-index rose by 10.1% (year-on-year) in August, slightly higher from 10.0% in July. While increases were observed in major groups within the index: Bread and Cereals, Meats and Fish, the index was weighted upon by a slower increase in the *Fruit, Vegetables, and Potatoes, Yams and Other Tubers* groups.

The advances recorded by the “All Items less Farm Produce” or Core sub-index increased at a faster pace in August relative to July. The Core Sub-index increased by 9.0% in August (year-on-year), 0.2 %points from 8.8% in July. Of the COICOP divisions that contribute to the Core sub-index, the largest pressures were recorded in the *Housing Water, Electricity, Gas and Other Fuels; Education, Restaurants and Hotels; and Miscellaneous Goods and Services divisions*. The pace of increases slowed in the *Health, Transportation, and Recreation and Culture* divisions, however.

It should be noted that the Headline Index is made up of the Core Index and Farm Produce items. As Processed Foods are included in both the Core and Food sub-indices, this

COMPOSITION OF THE MAJOR INDEX AND SUB-INDICES	
All Items	= Farm Produce + Core index
Food	= Farm Produce + Processed Foods
Core	= All Items – Farm Produce

implies that these sub-indices are not mutually-exclusive.

On a month-on-month basis, the pace of the increase in the Headline index eased for the third consecutive month. The Headline index increased by 0.6% in August, marginally lower from 0.7% in July. The Headline index increased at a slower rate as all COICOP divisions slowed during the period with the exceptions being *Furnishings & Household Equipment Maintenance; Education and Restaurant and Hotels Divisions*.

The Urban index increased by 9.2 percent (year-on-year), increasing at the same pace for three consecutive months, while the Rural index increased 0.2% points to 9.4%, from 9.2% in July. On a month-on-month basis, both the Urban and Rural indices increased at a slower pace, increasing by 0.6% in August. The Urban and Rural indices both grew by 0.7% in July.

The percentage change in the average composite CPI for the twelve-month period ending in August over the average of the CPI for the previous twelve-month period was 8.6 percent, marginally higher from the 8.5 percent rate recorded in July. The corresponding twelve-month year-on-year average percentage change for the Urban index increased marginally from 8.5% to 8.6%, while the corresponding Rural index also edged higher to 8.5% in August from 8.4 percent in July.

FOOD INDEX

In August, Food prices increased at a marginally higher pace relative to July. Food prices as observed by the Food Sub-index increased by 10.1%, as prices of, *Fruits, Vegetables; and Potatoes, Yams and Tubers* groups grew at a slower pace and weighed on the index. All three group indices increased at a slower pace for the second consecutive month. Imported food prices however remain high. On a month-on-month basis, the Food Sub-index increased at a slower pace

for the second consecutive month in August, increasing by 0.6% from 0.8% in July. All groups which contribute to the Food Sub-index increased at a slower rate in July with the exceptions being the *Eggs, Milk and Cheese; and the Oils and Fats* groups. The average annual rate of change of the Food Sub-index for the twelve-month period ending in August 2015 over the previous twelve month average was 9.6 percent, holding at the same rate for two consecutive months.

ALL ITEMS LESS FARM PRODUCE

The pace of increases recorded on the “All items less Farm Produce” or Core sub-index, which excludes the prices of volatile agricultural produce increased at a faster pace in August. Prices increased by 9.0% up by 0.2% points from the rate recorded in July. On a month-on-month basis, the Core Sub-index increased at the same rate for two consecutive months at 0.6%. The largest increases were recorded in *Liquid Fuel (Kerosene)* as a result of tight market conditions, and *Solid*

Fuels (which include Charcoal and firewood) groups which are often substitutes for *Liquid Fuels*. Other notable increases were in *Books and Stationaries* as a result of the start of the new school year and *Catering Services*. The average twelve month annual rate of rise of the index was recorded at 7.4% for the twelve-month period ending in August 2015, 0.2% points higher from the twelve month rate recorded in July.

For enquiries relating to this CPI report, please contact:
ykale@nigerianstat.gov.ng and udeokenwa@yahoo.com

Follow us on twitter [@nigerianstat](https://twitter.com/nigerianstat) and online at www.nigerianstat.gov.ng

Table 1 Composite Consumer Price Index (Base November 2009 = 100)														
		All Items Index (Farm Produce + All Items Less Farm Produce)					All Items less Farm Produce (includes Processed Food)				Food (Farm Produce + Processed Food)			
		Monthly	12- Month Average	Month- on change (%)	Year-on change (%)	12- Month average change (%)	Monthly	Month- on change (%)	Year- on change (%)	12- Month average change (%)	Monthly	Month- on change (%)	Year- on change (%)	12- Month average change (%)
Weights**		1000.0					513.10				507.06			
Please note that the above weights are only expenditure weights which are still adjusted by population across 37 states. They should not be taken as the final weights in the computation of the CPI														
2009	Jan	90.15	86.02	0.55	14.03	12.03	91.14	-0.11	8.01	5.52	89.46	0.92	18.44	16.54
	Feb	90.83	86.99	0.75	14.58	12.57	91.68	0.60	7.18	5.59	90.22	0.84	20.04	17.45
	Mar	91.36	87.94	0.59	14.37	13.10	91.98	0.33	11.84	6.51	90.94	0.81	16.23	17.74
	Apr	91.90	88.84	0.59	13.27	13.51	92.52	0.59	10.85	7.30	91.62	0.74	15.34	17.89
	May	93.59	89.75	1.84	13.21	13.79	94.19	1.80	9.88	7.85	93.50	2.05	15.74	17.95
	June	95.32	90.55	1.85	11.19	13.69	95.32	1.20	8.47	8.26	95.60	2.25	13.14	17.50
	July	97.29	91.36	2.07	11.09	13.44	96.80	1.55	8.28	8.55	97.87	2.37	12.87	16.81
	Aug	98.39	92.18	1.13	11.05	13.31	97.27	0.49	8.04	8.91	98.90	1.05	12.75	16.28
	Sep	98.88	92.95	0.50	10.39	13.07	98.09	0.85	7.43	8.94	99.49	0.60	12.47	15.86
	Oct	99.35	93.81	0.48	11.59	12.80	98.87	0.79	8.93	9.02	99.92	0.44	13.52	15.40
	Nov	100.00	94.73	0.65	12.37	12.61	100.00	1.14	10.70	9.14	100.00	0.08	13.48	15.02
	Dec	102.15	95.77	2.15	13.93	12.54	101.50	1.50	11.25	9.23	102.40	2.40	15.52	14.84
2010	Jan	103.13	96.85	0.96	14.40	12.59	102.14	0.63	12.06	9.57	103.70	1.27	15.92	14.67
	Feb	105.04	98.03	1.85	15.65	12.70	104.50	2.32	13.98	10.14	104.84	1.10	16.21	14.41
	Mar	104.90	99.16	-0.14	14.81	12.76	104.11	-0.37	13.18	10.27	105.30	0.44	15.79	14.39
	Apr	105.72	100.31	0.79	15.04	12.92	104.41	0.28	12.84	10.44	106.56	1.19	16.31	14.49
	May	105.68	101.32	-0.04	12.91	12.89	105.22	0.78	11.71	10.60	105.68	-0.83	13.02	14.27

Table 1 Composite Consumer Price Index (Base November 2009 = 100)														
		All Items Index (Farm Produce + All Items Less Farm Produce)					All Items less Farm Produce (includes Processed Food)				Food (Farm Produce + Processed Food)			
		Monthly	12- Month Average	Month- on change (%)	Year-on change (%)	12- Month average change (%)	Monthly	Month- on change (%)	Year- on change (%)	12- Month average change (%)	Monthly	Month- on change (%)	Year- on change (%)	12- Month average change (%)
Weights**		1000.0					513.10				507.06			
Please note that the above weights are only expenditure weights which are still adjusted by population across 37 states. They should not be taken as the final weights in the computation of the CPI														
	Jun	108.76	102.44	2.91	14.10	13.13	107.41	2.08	12.69	10.95	109.99	4.08	15.05	14.42
	Jul	109.94	103.50	1.08	13.00	13.28	107.72	0.29	11.29	11.19	111.61	1.47	14.04	14.51
	Aug	111.87	104.62	1.76	13.70	13.50	109.30	1.47	12.37	11.55	113.82	1.98	15.09	14.71
	Sep	112.38	105.74	0.46	13.65	13.76	110.68	1.26	12.83	12.00	113.98	0.14	14.57	14.87
	Oct	112.72	106.86	0.30	13.45	13.91	111.89	1.10	13.17	12.35	113.98	0.00	14.07	14.91
	Nov	112.77	107.92	0.04	12.77	13.93	111.75	-0.13	11.75	12.42	114.35	0.33	14.35	14.97
	Dec	114.22	108.93	1.29	11.82	13.74	112.58	0.75	10.92	12.38	115.40	0.92	12.70	14.72
2011	Jan	115.59	109.97	1.20	12.08	13.54	114.51	1.72	12.12	12.39	114.33	-0.93	10.26	14.23
	Feb	116.70	110.94	0.96	11.10	13.16	115.54	0.90	10.57	12.10	117.65	2.90	12.22	13.90
	Mar	118.30	112.05	1.37	12.78	13.00	117.45	1.65	12.81	12.08	118.12	0.40	12.17	13.61
	Apr	117.66	113.05	-0.54	11.29	12.69	117.86	0.34	12.88	12.09	118.95	0.71	11.63	13.23
	May	118.73	114.14	0.91	12.35	12.65	118.90	0.89	13.01	12.20	118.55	-0.34	12.18	13.15
	Jun	119.89	115.06	0.97	10.23	12.32	119.79	0.74	11.52	12.10	120.13	1.34	9.22	12.65
	Jul	120.27	115.93	0.32	9.40	12.01	120.08	0.24	11.47	12.11	120.40	0.23	7.88	12.12
	Aug	122.27	116.79	1.67	9.30	11.64	121.17	0.91	10.86	11.98	123.68	2.72	8.66	11.57

Table 1 Composite Consumer Price Index (Base November 2009 = 100)														
		All Items Index (Farm Produce + All Items Less Farm Produce)					All Items less Farm Produce (includes Processed Food)				Food (Farm Produce + Processed Food)			
		Monthly	12- Month Average	Month- on change (%)	Year-on change (%)	12- Month average change (%)	Monthly	Month- on change (%)	Year- on change (%)	12- Month average change (%)	Monthly	Month- on change (%)	Year- on change (%)	12- Month average change (%)
Weights**		1000.0					513.10				507.06			
Please note that the above weights are only expenditure weights which are still adjusted by population across 37 states. They should not be taken as the final weights in the computation of the CPI														
	Sep	124.00	117.76	1.41	10.34	11.36	123.48	1.91	11.57	11.88	124.78	0.89	9.48	11.15
	Oct	124.60	118.75	0.49	10.54	11.13	124.80	1.07	11.54	11.75	124.98	0.16	9.66	10.80
	Nov	124.65	119.74	0.04	10.54	10.95	124.55	-0.20	11.46	11.72	125.35	0.30	9.62	10.42
	Dec	125.97	120.72	1.06	10.28	10.83	124.76	0.17	10.82	11.71	128.12	2.21	11.02	10.30
2012	Jan	130.19	121.94	3.35	12.63	10.89	129.11	3.48	12.75	11.77	129.26	0.89	13.05	10.54
	Feb	130.55	123.09	0.28	11.87	10.95	129.30	0.14	11.90	11.87	129.10	-0.13	9.73	10.34
	Mar	132.63	124.28	1.59	12.11	10.91	135.06	4.46	15.00	12.07	132.11	2.34	11.85	10.33
	Apr	132.80	125.55	0.13	12.87	11.05	135.18	0.09	14.70	12.24	132.33	0.16	11.25	10.30
	May	133.80	126.80	0.75	12.69	11.10	136.65	1.08	14.93	12.42	133.89	1.18	12.94	10.39
	Jun	135.34	128.09	1.15	12.89	11.32	137.99	0.98	15.20	12.73	134.54	0.48	11.99	10.62
	Jul	135.66	129.37	0.24	12.80	11.60	138.14	0.11	15.04	13.03	134.96	0.32	12.09	10.96
	Aug	136.57	130.56	0.67	11.69	11.79	139.00	0.62	14.71	13.35	135.94	0.72	9.91	11.06
	Sep	137.95	131.73	1.01	11.25	11.86	139.66	0.47	13.10	13.47	137.47	1.12	10.16	11.10
	Oct	139.17	132.94	0.88	11.69	11.95	140.28	0.44	12.40	13.53	138.81	0.98	11.06	11.22
	Nov	140.01	134.22	0.60	12.32	12.09	140.86	0.41	13.09	13.65	139.84	0.74	11.55	11.37

Table 1 Composite Consumer Price Index (Base November 2009 = 100)														
		All Items Index (Farm Produce + All Items Less Farm Produce)					All Items less Farm Produce (includes Processed Food)				Food (Farm Produce + Processed Food)			
		Monthly	12- Month Average	Month- on change (%)	Year-on change (%)	12- Month average change (%)	Monthly	Month- on change (%)	Year- on change (%)	12- Month average change (%)	Monthly	Month- on change (%)	Year- on change (%)	12- Month average change (%)
Weights**		1000.0					513.10				507.06			
Please note that the above weights are only expenditure weights which are still adjusted by population across 37 states. They should not be taken as the final weights in the computation of the CPI														
	Dec	141.06	135.48	0.75	11.98	12.22	141.84	0.70	13.69	13.87	141.19	0.97	10.20	11.30
2013	Jan	141.94	136.46	0.62	9.03	11.91	143.75	1.35	11.34	13.74	142.32	0.80	10.11	11.05
	Feb	143.00	137.50	0.75	9.54	11.70	143.76	0.00	11.18	13.66	143.26	0.66	10.97	11.15
	Mar	144.02	138.44	0.71	8.59	11.39	144.76	0.70	7.18	12.96	144.64	0.96	9.48	10.95
	Apr	144.82	139.45	0.55	9.05	11.07	144.48	-0.20	6.87	12.28	145.57	0.64	10.01	10.84
	May	145.79	140.45	0.67	8.96	10.76	145.16	0.47	6.23	11.53	146.37	0.55	9.32	10.55
	Jun	146.65	141.39	0.59	8.35	10.38	145.55	0.27	5.47	10.70	147.46	0.75	9.61	10.35
	Jul	147.44	142.37	0.54	8.68	10.05	147.23	1.16	6.58	10.01	148.45	0.67	9.99	10.19
	Aug	147.81	143.31	0.25	8.23	9.76	149.07	1.25	7.25	9.40	149.16	0.48	9.72	10.17
	Sep	148.92	144.22	0.75	7.95	9.49	150.01	0.63	7.41	8.94	150.44	0.86	9.44	10.10
	Oct	150.04	145.13	0.75	7.81	9.17	150.91	0.60	7.58	8.55	151.65	0.80	9.25	9.95
	Nov	151.11	146.05	0.72	7.93	8.82	151.77	0.57	7.75	8.14	152.86	0.80	9.31	9.77
	Dec	152.29	146.99	0.78	7.96	8.50	153.00	0.81	7.87	7.69	154.25	0.91	9.25	9.70
2014	Jan	153.26	147.93	0.64	7.98	8.41	153.31	0.20	6.65	7.32	155.52	0.82	9.27	9.63
	Feb	154.03	148.85	0.50	7.71	8.26	154.06	0.49	7.17	7.00	156.45	0.60	9.21	9.48
	Mar	155.23	149.78	0.78	7.78	8.19	154.66	0.39	6.84	6.98	158.02	1.00	9.25	9.46

Table 1 Composite Consumer Price Index (Base November 2009 = 100)														
		All Items Index (Farm Produce + All Items Less Farm Produce)					All Items less Farm Produce (includes Processed Food)				Food (Farm Produce + Processed Food)			
		Monthly	12- Month Average	Month- on change (%)	Year- on change (%)	12- Month average change (%)	Monthly	Month- on change (%)	Year- on change (%)	12- Month average change (%)	Monthly	Month- on change (%)	Year- on change (%)	12- Month average change (%)
Weights**		1000.0					513.10				507.06			
Please note that the above weights are only expenditure weights which are still adjusted by population across 37 states. They should not be taken as the final weights in the computation of the CPI														
	Apr	156.19	150.73	0.62	7.85	8.09	155.32	0.43	7.51	7.03	159.27	0.79	9.41	9.42
	May	157.41	151.70	0.78	7.96	8.01	156.33	0.65	7.69	7.15	160.56	0.81	9.70	9.45
	Jun	158.62	152.70	0.77	8.17	8.00	157.37	0.67	8.12	7.37	161.88	0.82	9.78	9.46
	Jul	159.65	153.71	0.65	8.28	7.97	157.71	0.22	7.12	7.41	163.11	0.77	9.88	9.46
	Aug	160.42	154.76	0.48	8.53	8.00	158.41	0.45	6.26	7.33	164.01	0.55	9.96	9.48
	Sep	161.31	155.80	0.55	8.32	8.03	159.43	0.64	6.28	7.23	165.00	0.60	9.68	9.50
	Oct	162.13	156.80	0.51	8.06	8.05	160.34	0.58	6.25	7.12	165.82	0.50	9.34	9.51
	Nov	163.09	157.80	0.59	7.93	8.05	161.27	0.58	6.26	6.99	166.84	0.62	9.14	9.49
	Dec	164.44	158.82	0.82	7.98	8.05	162.53	0.78	6.22	6.85	168.37	0.92	9.15	9.48
2015	Jan	165.77	159.86	0.81	8.16	8.06	163.72	0.73	6.79	6.86	169.85	0.88	9.21	9.47
	Feb	166.90	160.93	0.68	8.36	8.12	164.83	0.68	6.99	6.85	171.10	0.74	9.36	9.49
	Mar	168.42	162.03	0.91	8.49	8.18	166.19	0.83	7.46	6.91	172.84	1.02	9.38	9.49
	Apr	169.71	163.16	0.76	8.66	8.24	167.22	0.62	7.66	6.92	174.39	0.90	9.49	9.50
	May	171.58	164.34	1.10	9.00	8.33	169.23	1.20	8.25	6.97	176.27	1.08	9.78	9.51
	June	173.17	165.55	0.93	9.17	8.42	170.59	0.80	8.40	7.01	178.13	1.06	10.04	9.53
	July	174.37	166.77	0.69	9.22	8.50	171.64	0.61	8.83	7.15	179.50	0.77	10.05	9.55
	Aug	175.40	168.02	0.59	9.34	8.57	172.69	0.61	9.01	7.38	180.63	0.63	10.13	9.57

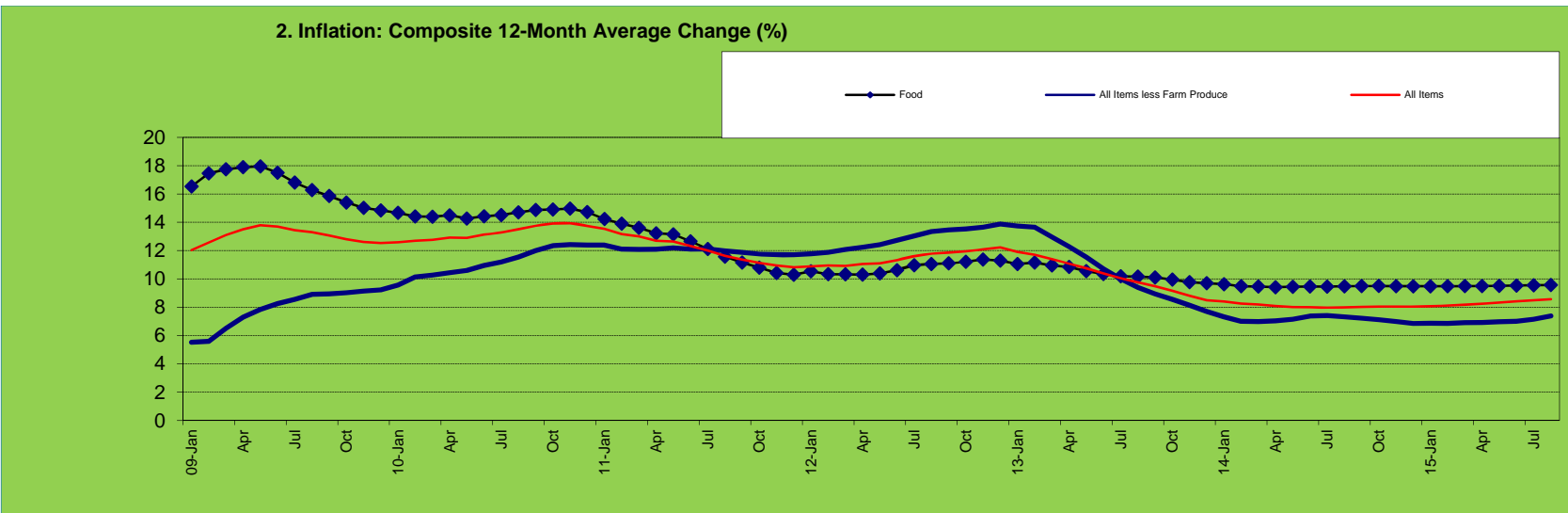
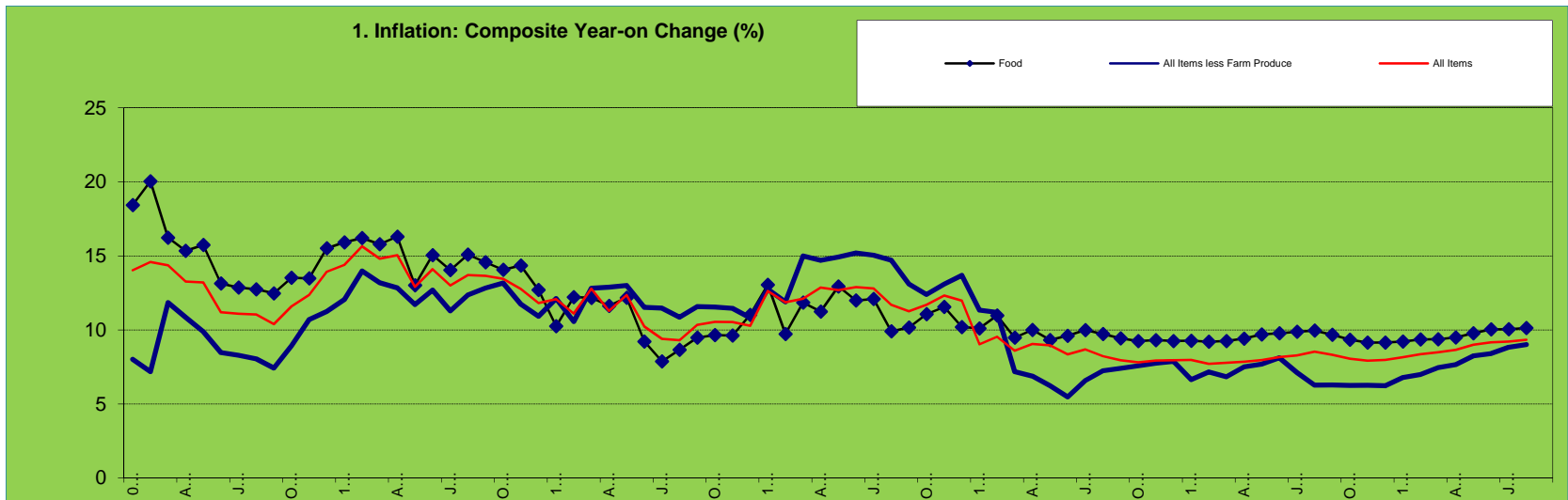


Table 2 Composite Consumer Price Index (Base November 2009 = 100)

		All Items	All Items less Farm Produce.	All Items less Farm Produce. and Energy	Imported Food	Food	Food & Non Alcoholic Bev.	Alcoholic Beverage. Tobacco and Kola	Clothing and Footwear	Housing Water, Electricity. Gas and Other Fuel	Furnishings & Household Equipment Maintenance.	Health.	Transport	Communication	Recreation & Culture.	Education	Restaurant & Hotels	Miscellaneous Goods & Services	Month-on (%)	Year-on (%)	12-month average (%)
Weights**		1000	513.1	428.1	132.5	507.06	518	10.87	76.5	167.3	50.26	30	65.1	6.8	6.91	39.44	12.1	16.6			
Please note that the above weights are only expenditure weights which are still adjusted by population across 37 states. They should not be taken as the final weights in the computation of the CPI																					
2009	Jan	90.15	91.14	92.56		89.46	89.50	97.59	97.04	92.28	87.27	97.15	91.22	97.08	93.69	88.28	99.37	93.89	0.55	14.03	12.03
	Feb	90.83	91.68	92.65		90.22	90.24	98.47	97.00	92.61	87.38	98.61	90.23	97.10	92.75	88.09	100.41	94.06	0.75	14.58	12.57
	Mar	91.36	91.98	93.14		90.94	90.99	98.47	97.06	92.55	87.87	99.01	90.96	97.09	92.65	89.91	100.18	94.93	0.59	14.37	13.10
	Apr	91.90	92.52	94.06		91.62	91.65	99.06	97.46	92.90	89.60	101.10	94.36	97.09	93.42	89.32	101.32	95.43	0.59	13.27	13.51
	May	93.59	94.19	95.42		93.50	93.52	99.48	96.69	94.34	88.77	99.15	95.96	97.09	94.56	92.26	100.23	94.48	1.84	13.21	13.79
	June	95.32	95.32	96.63		95.60	95.59	99.73	97.08	96.27	89.59	100.11	94.04	97.09	95.05	92.57	101.09	97.78	1.85	11.19	13.69
	July	97.29	96.80	98.45		97.87	97.85	101.35	97.88	98.28	99.26	101.71	92.50	99.44	96.75	93.92	98.94	98.81	2.07	11.09	13.44
	Aug	98.39	97.27	97.71		98.90	98.88	100.20	99.13	98.38	100.24	101.76	93.15	101.48	98.11	99.43	101.22	99.97	1.13	11.05	13.31
	Sep	98.88	98.09	98.52		99.49	99.45	99.27	99.06	98.73	98.71	101.55	94.93	101.19	97.57	99.63	99.95	100.13	0.50	10.39	13.07
	Oct	99.35	98.87	99.07		99.92	99.92	99.68	99.62	99.51	99.08	102.32	95.99	100.42	97.54	97.72	98.99	99.72	0.48	11.59	12.80
	Nov	100.00	100.00	100.00	100.00	100.00	100.00	100.00	100.00	100.00	100.00	100.00	100.00	100.00	100.00	100.00	100.00	100.00	0.65	12.37	12.61
	Dec	102.15	101.50	101.94	101.49	102.40	102.69	101.87	101.51	100.23	101.68	101.81	101.77	99.99	101.87	101.49	102.58	101.74	2.15	13.93	12.54
2010	Jan	103.13	102.14	102.55	101.67	103.70	103.95	102.30	102.37	100.57	103.01	102.99	103.05	99.58	102.99	103.11	106.75	103.30	0.96	14.40	12.59
	Feb	105.04	104.50	104.99	103.23	104.84	105.42	102.65	103.42	102.32	104.66	104.90	104.69	100.32	99.44	106.00	106.35	105.90	1.85	15.65	12.70
	Mar	104.90	104.11	104.59	103.00	105.30	105.35	104.30	104.48	102.20	105.66	105.26	104.85	100.63	103.26	105.50	105.56	104.43	-0.14	14.81	12.76
	Apr	105.72	104.41	105.14	103.91	106.56	106.66	104.81	105.06	102.25	103.77	104.91	106.76	100.35	103.08	105.58	109.73	106.16	0.79	15.04	12.92
	May	105.68	105.22	106.52	104.94	105.68	106.21	103.77	105.87	102.12	102.61	104.80	106.27	100.22	103.25	108.62	110.08	107.15	-0.04	12.91	12.89
	Jun	108.76	107.41	108.61	109.55	109.99	110.15	108.48	109.11	104.79	110.74	108.45	107.42	102.08	102.61	106.55	106.88	109.60	2.91	14.10	13.13
	Jul	109.94	107.72	108.84	109.29	111.61	111.98	109.55	110.31	105.13	109.02	110.27	107.45	102.57	102.96	105.71	105.04	110.66	1.08	13.00	13.28
	Aug	111.87	109.30	110.42	109.29	113.82	114.13	112.28	112.78	106.20	110.27	112.32	108.58	100.60	105.02	106.02	107.32	111.16	1.76	13.70	13.50

Table 2 Composite Consumer Price Index (Base November 2009 = 100)

		All Items	All items less Farm Produce.	All items less Farm Produce. and Energy	Imported Food	Food	Food & Non Alcoholic Bev.	Alcoholic Beverage. Tobacco and Kola	Clothing and Footwear	Housing Water, Electricity. Gas and Other Fuel	Furnishings & Household Equipment Maintenance.	Health.	Transport	Communication	Recreation & Culture.	Education	Restaurant & Hotels	Miscellaneous Goods & Services	Month-on (%)	Year-on (%)	12-month average (%)
Weights**		1000	513.1	428.1	132.5	507.06	518	10.87	76.5	167.3	50.26	30	65.1	6.8	6.91	39.44	12.1	16.6			
Please note that the above weights are only expenditure weights which are still adjusted by population across 37 states. They should not be taken as the final weights in the computation of the CPI																					
	Sep	112.38	110.68	111.71	113.56	113.98	113.53	108.95	112.41	109.88	112.10	111.97	112.18	101.82	108.37	108.36	107.12	111.74	0.46	13.65	13.76
	Oct	112.72	111.89	111.99	114.09	113.98	114.07	111.75	112.82	110.97	113.22	114.78	107.05	102.90	109.57	110.11	108.50	110.64	0.30	13.45	13.91
	Nov	112.77	111.75	111.33	115.09	114.35	114.26	112.16	112.01	112.61	113.10	111.11	111.72	102.00	107.76	107.69	108.17	112.80	0.04	12.77	13.93
	Dec	114.22	112.58	112.49	115.39	115.40	115.46	111.90	113.66	113.19	113.25	112.75	112.94	102.35	107.76	109.14	109.59	112.06	1.29	11.82	13.74
2011	Jan	115.59	114.51	113.01	96.04	114.33	118.69	110.64	114.40	113.86	113.55	111.35	109.23	103.62	108.35	110.22	110.48	113.15	1.20	12.08	13.54
	Feb	116.70	115.54	115.50	124.02	117.65	117.93	113.41	116.04	114.73	115.62	114.66	117.21	104.89	106.30	110.59	112.27	114.18	0.96	11.10	13.16
	Mar	118.30	117.45	117.47	119.42	118.12	118.18	112.74	116.54	116.02	115.92	117.53	115.47	105.09	107.36	111.04	112.23	112.77	1.37	12.78	13.00
	Apr	117.66	117.86	117.94	119.12	118.95	117.99	114.51	116.18	121.02	115.44	117.20	114.77	105.07	107.06	111.37	113.35	114.73	-0.54	11.29	12.69
	May	118.73	118.90	118.98	120.55	118.55	118.49	115.08	118.21	121.18	116.56	116.63	115.74	105.69	107.39	111.90	113.77	115.59	0.91	12.35	12.65
	Jun	119.89	119.79	119.81	111.89	120.13	119.54	114.21	118.00	121.58	116.30	119.85	118.48	105.64	107.93	112.20	114.27	117.93	0.97	10.23	12.32
	Jul	120.27	120.08	119.85	112.60	120.40	120.23	112.36	117.66	122.47	117.56	118.31	120.73	106.17	111.09	112.64	115.03	119.83	0.32	9.40	12.01
	Aug	122.27	121.17	121.08	115.97	123.68	123.40	116.40	118.75	124.51	119.95	120.43	121.94	106.36	109.53	112.90	115.10	121.49	1.67	9.30	11.64
	Sep	124.00	123.48	122.67	117.63	124.78	124.23	116.23	119.93	126.10	119.21	122.34	122.28	106.20	109.75	113.77	115.69	121.56	1.41	10.34	11.36
	Oct	124.60	124.80	123.95	116.95	124.98	124.28	117.61	120.59	128.50	119.47	121.76	122.20	106.65	117.05	113.96	116.61	121.97	0.49	10.54	11.13
	Nov	124.65	124.55	123.49	124.21	125.35	125.12	118.94	121.86	128.08	120.24	122.68	123.29	107.08	115.72	114.17	116.85	125.48	0.04	10.54	10.95
	Dec	125.97	124.76	123.63	125.30	128.12	127.78	119.02	122.31	131.91	119.94	122.83	128.74	106.53	113.33	114.60	118.86	122.66	1.06	10.28	10.83
2012	Jan	130.19	129.11	129.22	121.59	129.26	130.83	123.19	121.09	131.77	120.60	122.70	127.83	108.66	114.51	115.04	120.03	125.87	3.35	12.63	10.89
	Feb	130.55	129.30	129.37	121.64	129.10	129.08	123.20	121.12	131.83	120.61	122.71	127.85	108.66	114.51	115.06	120.04	125.88	0.28	11.87	10.95
	Mar	132.63	135.06	134.49	129.90	132.11	131.91	120.55	133.73	139.70	130.19	129.67	134.41	113.39	116.70	125.60	121.36	131.57	1.59	12.11	10.91
	Apr	132.80	135.18	134.70	131.29	132.33	132.13	121.33	134.11	139.51	130.74	130.15	134.63	113.98	117.55	125.01	121.86	132.00	0.13	12.87	11.05
	May	133.80	136.65	136.30	132.53	133.89	133.67	121.97	134.67	139.75	131.09	130.78	135.11	114.35	118.43	125.50	122.60	132.56	0.75	12.69	11.10

Table 2 Composite Consumer Price Index (Base November 2009 = 100)

		All Items	All Items less Farm Produce.	All Items less Farm Produce. and Energy	Imported Food	Food	Food & Non Alcoholic Bev.	Alcoholic Beverage. Tobacco and Kola	Clothing and Footwear	Housing Water, Electricity. Gas and Other Fuel	Furnishings & Household Equipment Maintenance.	Health.	Transport	Communication	Recreation & Culture.	Education	Restaurant & Hotels	Miscellaneous Goods & Services	Month-on (%)	Year-on (%)	12-month average (%)
Weights**		1000	513.1	428.1	132.5	507.06	518	10.87	76.5	167.3	50.26	30	65.1	6.8	6.91	39.44	12.1	16.6			
Please note that the above weights are only expenditure weights which are still adjusted by population across 37 states. They should not be taken as the final weights in the computation of the CPI																					
	Jun	135.34	137.99	136.22	132.59	134.54	134.31	122.46	134.79	146.48	131.25	131.08	135.50	114.81	118.51	125.69	123.07	132.87	1.15	12.89	11.32
	Jul	135.66	138.14	136.51	132.88	134.96	134.74	122.79	134.91	146.72	131.27	131.27	135.82	114.85	118.86	125.86	123.45	133.13	0.24	12.80	11.60
	Aug	136.57	139.00	137.06	134.18	135.94	135.71	123.34	135.65	147.85	131.99	131.96	136.55	115.21	119.37	126.38	124.36	133.73	0.67	11.69	11.79
	Sep	137.95	139.66	137.68	134.19	137.47	137.23	123.83	136.52	150.10	132.89	132.40	137.30	115.65	120.56	126.69	124.98	134.36	1.01	11.25	11.86
	Oct	139.17	140.28	138.08	135.30	138.81	138.56	124.50	137.53	151.51	133.47	133.06	138.49	116.03	121.36	128.08	125.43	135.32	0.88	11.69	11.95
	Nov	140.01	140.86	138.74	136.24	139.84	139.58	125.30	138.18	152.34	134.09	133.52	138.89	116.16	121.83	128.82	125.70	135.60	0.60	12.32	12.09
	Dec	141.06	141.84	139.61	137.61	141.19	140.92	126.11	139.09	153.21	134.37	133.88	140.19	116.34	122.07	129.07	126.10	135.98	0.75	11.98	12.22
2013	Jan	141.94	143.75	140.34	138.72	142.32	142.04	127.06	140.09	153.84	135.38	134.29	140.62	116.43	122.20	129.27	126.43	136.28	0.62	9.03	11.91
	Feb	143.00	143.76	140.51	139.07	143.26	142.97	128.06	141.32	155.17	136.43	135.46	141.88	116.90	123.26	130.19	127.49	137.44	0.75	9.54	11.70
	Mar	144.02	144.76	142.91	139.30	144.64	144.34	128.73	141.77	155.86	136.90	136.44	142.40	117.30	123.74	131.21	127.66	138.77	0.71	8.59	11.39
	Apr	144.82	144.48	142.28	139.93	145.57	145.26	129.39	142.79	156.27	137.64	137.25	143.24	117.41	124.55	131.75	128.14	139.66	0.55	9.05	11.07
	May	145.79	145.16	141.86	140.05	146.37	146.06	130.13	144.00	157.18	139.30	138.61	144.48	117.85	125.80	133.21	129.13	140.64	0.67	8.96	10.76
	Jun	146.65	145.55	142.18	141.37	147.46	147.14	130.67	144.58	157.99	139.89	139.40	144.98	118.13	126.29	133.33	129.69	141.14	0.59	8.35	10.38
	Jul	147.44	147.23	145.09	142.39	148.45	148.12	131.26	145.20	158.75	140.37	139.98	145.54	118.47	126.64	133.53	130.31	141.48	0.54	8.68	10.05
	Aug	147.81	149.07	146.32	143.21	149.16	148.82	131.58	145.32	158.54	140.45	140.02	145.64	118.55	126.73	133.75	130.50	141.64	0.25	8.23	9.76
	Sep	148.92	150.01	147.85	144.26	150.44	150.10	132.42	146.33	159.44	141.29	140.88	146.66	119.12	127.46	134.87	131.51	142.60	0.75	7.95	9.49
	Oct	150.04	150.91	148.62	145.46	151.65	151.30	133.43	147.51	160.27	142.32	141.97	147.76	120.03	128.47	136.05	132.65	143.80	0.75	7.81	9.17
	Nov	151.11	151.77	149.54	146.34	152.86	152.51	134.15	148.67	161.26	143.16	142.69	148.61	120.45	129.27	136.96	133.57	144.92	0.72	7.93	8.82
	Dec	152.29	153.00	150.81	147.42	154.25	153.89	134.75	149.75	162.18	144.13	143.52	149.59	120.93	130.08	137.88	134.42	145.94	0.78	7.96	8.50
2014	Jan	153.26	153.31	150.70	148.39	155.52	155.15	135.48	150.67	162.72	144.99	144.28	150.40	121.27	131.01	138.28	134.91	146.55	0.64	7.98	8.41
	Feb	154.03	154.06	151.78	149.12	156.45	156.08	136.00	151.35	163.31	145.51	145.00	151.01	121.57	131.97	138.67	135.31	146.88	0.50	7.71	8.26
	Mar	155.23	154.66	152.54	150.25	158.02	157.65	136.74	151.95	164.17	146.47	145.90	152.01	122.10	132.77	139.40	136.15	147.71	0.78	7.78	8.19

Table 2 Composite Consumer Price Index (Base November 2009 = 100)

	All Items	All Items less Farm Produce.	All Items less Farm Produce. and Energy	Imported Food	Food	Food & Non Alcoholic Bev.	Alcoholic Beverage. Tobacco and Kola	Clothing and Footwear	Housing Water, Electricity. Gas and Other Fuel	Furnishings & Household Equipment Maintenance.	Health.	Transport	Communication	Recreation & Culture.	Education	Restaurant & Hotels	Miscellaneous Goods & Services	Month-on (%)	Year-on (%)	12-month average (%)	
Weights**	1000	513.1	428.1	132.5	507.06	518	10.87	76.5	167.3	50.26	30	65.1	6.8	6.91	39.44	12.1	16.6				
Please note that the above weights are only expenditure weights which are still adjusted by population across 37 states. They should not be taken as the final weights in the computation of the CPI																					
	Apr	156.19	155.32	153.11	151.10	159.27	158.89	137.51	152.66	164.91	147.00	146.32	152.58	122.59	133.55	139.86	136.89	148.38	0.62	7.85	8.09
	May	157.41	156.33	154.01	152.37	160.56	160.17	138.30	154.06	166.00	148.24	147.40	153.76	123.09	134.47	140.85	138.07	149.58	0.78	7.96	8.01
	Jun	158.62	157.37	154.99	153.43	161.88	161.48	139.33	155.29	167.33	149.30	148.42	154.83	123.71	135.30	141.33	139.17	150.67	0.77	8.17	8.00
	Jul	159.65	157.71	155.35	154.00	163.11	162.70	140.24	156.15	168.27	150.32	149.12	155.44	124.06	136.51	141.77	139.93	151.33	0.65	8.28	7.97
	Aug	160.42	158.41	156.04	154.88	164.01	163.59	140.96	156.81	168.71	151.10	149.92	156.25	124.23	137.40	142.64	140.51	152.04	0.48	8.53	8.00
	Sep	161.31	159.43	157.07	155.97	165.00	164.57	141.76	157.63	169.39	152.17	150.55	156.93	124.56	137.87	143.88	141.30	152.86	0.55	8.32	8.03
	Oct	162.13	160.34	157.99	156.95	165.82	165.39	142.61	158.63	170.06	153.10	151.42	157.65	124.91	138.36	145.01	142.35	153.85	0.51	8.06	8.05
	Nov	163.09	161.27	158.93	158.02	166.84	166.41	143.37	159.83	170.81	154.21	152.41	158.41	125.27	138.91	146.00	143.25	154.87	0.59	7.93	8.05
	Dec	164.44	162.53	160.24	159.45	168.37	167.94	144.74	161.29	171.78	155.47	153.54	159.69	125.48	139.64	146.98	144.59	156.21	0.82	7.98	8.05
2015	Jan	165.77	163.72	161.41	160.84	169.85	169.40	145.66	162.66	172.94	156.89	154.74	160.77	125.64	140.55	148.11	145.80	157.36	0.81	8.16	8.06
	Feb	166.90	164.83	162.53	162.31	171.10	170.64	146.73	163.78	173.93	158.00	155.86	161.75	126.06	141.28	149.04	146.86	158.41	0.68	8.36	8.12
	Mar	168.42	166.19	163.93	163.65	172.84	172.38	147.92	165.22	175.11	159.49	157.37	163.06	126.27	142.03	150.28	148.04	159.86	0.91	8.49	8.18
	Apr	169.71	167.22	164.87	165.01	174.39	173.92	148.90	166.13	176.23	160.34	158.31	164.48	126.54	142.62	150.99	148.92	160.77	0.76	8.66	8.24
	May	171.58	169.23	166.75	166.89	176.27	175.79	150.48	168.14	178.24	161.94	160.18	166.52	126.88	143.73	152.69	150.42	162.57	1.10	9.00	8.33
	Jun	173.17	170.59	167.95	168.55	178.13	177.63	151.69	169.46	179.54	162.92	161.00	168.35	127.32	145.03	154.02	151.79	164.28	0.93	9.17	8.42
	July	174.37	171.64	168.93	169.98	179.50	178.99	152.76	170.69	180.60	163.60	162.02	169.56	127.64	145.95	154.89	152.57	165.30	0.69	9.22	8.50
	Aug	175.40	172.69	169.84	171.35	180.63	180.11	153.51	171.56	181.65	164.45	162.79	170.24	127.91	146.29	156.38	153.41	166.30	0.59	9.34	8.57

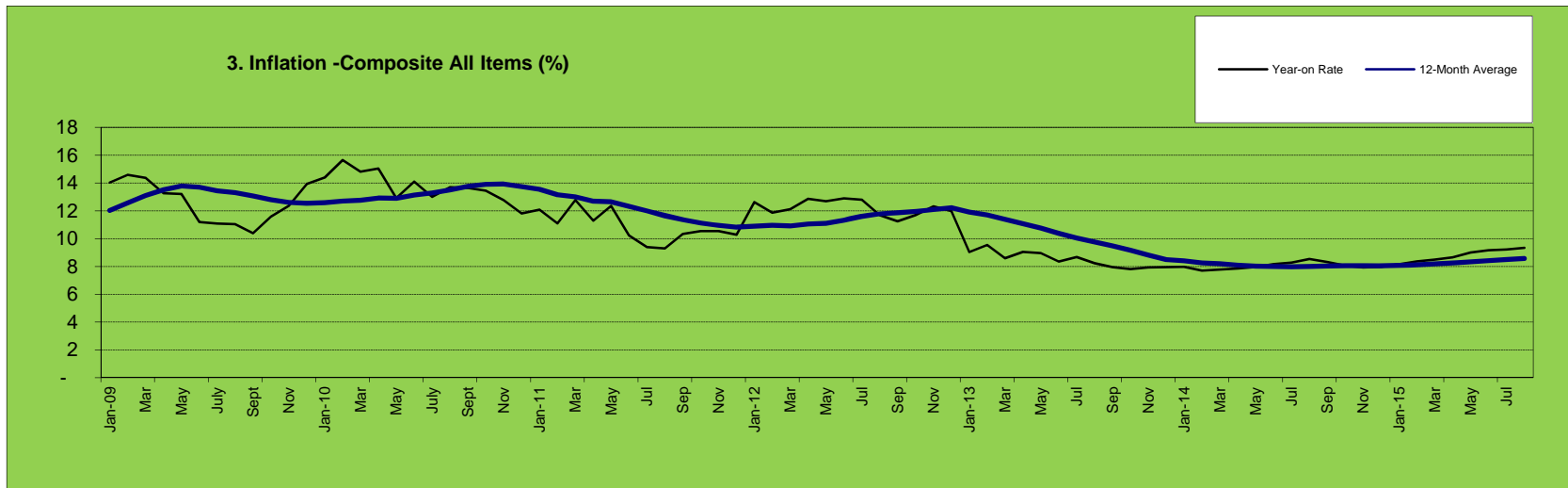


Table 3 Urban Consumer Price Index (Base November 2009 = 100)

		All Items	All Items less Farm Produce.	All Items less Farm Produce. and Energy	Imported Food	Food	Food & Non Alcoholic Bev.	Alcoholic Beverage. Tobacco and Kola	Clothing and Footwear	Housing Water, Electricity. Gas and Other Fuel	Furnishings & Household Equipment Maintenance.	Health.	Transport	Communication	Recreation & Culture.	Education	Restaurant & Hotels	Miscellaneous Goods & Services	Month-on (%)	Year-on (%)	12-month average (%)
Weights		1000	575.22	440.93	155.13	476.82	490.59	11.19	65.5	191.51	49.74	27.4	74.54	10.14	7.2	40.05	14.49	17.65			
Please note that the above weights are only expenditure weights which are still adjusted by population across 37 states. They should not be taken as the final weights in the computation of the CPI																					
2009	Jan	92.81	96.59	97.75		90.49	90.54	97.63	97.80	96.37	96.26	96.28	94.00	99.30	97.80	92.27	102.03	95.97	0.04	10.44	11.84
	Feb	93.56	96.30	97.58		91.99	92.04	98.60	98.20	95.48	96.22	98.14	93.00	99.30	97.77	90.92	103.17	95.25	0.81	9.77	11.56
	Mar	93.90	96.51	98.02		92.37	92.44	98.83	97.89	95.53	96.52	98.29	94.11	99.30	96.72	92.98	104.15	95.14	0.36	9.91	11.54
	Apr	94.34	97.36	98.83		92.55	92.62	99.92	98.62	96.39	97.99	99.65	95.74	99.30	97.80	89.74	104.41	95.63	0.47	8.62	11.32
	May	95.67	98.22	98.69		94.08	94.13	100.07	96.89	98.07	96.19	97.95	97.11	99.30	98.94	96.34	104.17	98.22	1.42	9.55	11.25
	June	97.24	98.76	99.66		96.27	96.32	100.65	97.04	98.55	97.35	99.34	96.67	99.30	99.88	96.67	106.18	98.06	1.63	9.17	11.04
	July	98.87	99.46	100.32		98.36	98.40	102.14	99.86	100.16	98.78	100.85	95.65	100.84	100.08	97.57	100.09	98.54	1.68	9.32	10.74
	Aug	99.61	99.72	99.42		99.28	99.31	100.66	99.86	100.62	99.67	100.33	95.10	102.11	101.21	97.44	105.17	99.86	0.74	8.40	10.42
	Sep	99.77	99.50	99.16		99.81	99.82	99.82	99.69	100.31	101.12	98.80	95.97	101.51	100.47	99.48	99.68	100.80	0.16	8.07	9.97
	Oct	99.76	99.87	99.31		99.61	99.62	99.79	100.33	100.79	100.92	99.95	96.79	100.93	100.06	98.95	97.97	100.66	0.00	8.30	9.54
	Nov	100.00	100.00	100.00	100.00	100.00	100.00	100.00	100.00	100.00	100.00	100.00	100.00	100.00	100.00	100.00	100.00	100.00	0.24	8.78	9.28
	Dec	101.40	101.31	101.76	100.54	101.61	101.69	99.94	100.88	101.42	100.81	101.55	101.96	99.22	104.24	100.74	103.23	101.55	1.40	9.30	9.12
2010	Jan	102.59	102.46	102.68	101.06	102.83	102.84	100.73	103.08	102.61	101.93	102.42	103.47	99.71	105.77	102.53	108.25	102.84	1.17	10.53	9.14
	Feb	104.40	105.38	105.39	103.10	102.91	103.63	101.64	103.60	104.44	103.60	105.37	103.94	100.07	99.38	107.98	106.73	106.27	1.76	11.58	9.30
	Mar	105.98	105.74	105.93	103.51	106.14	105.93	103.80	105.91	104.82	106.09	106.83	108.08	100.89	107.09	106.80	107.46	106.09	1.51	12.86	9.56
	Apr	105.89	105.41	105.64	103.44	106.30	106.06	103.87	105.98	103.93	105.49	106.86	106.71	100.77	108.29	106.61	111.51	107.00	-0.09	12.24	9.86
	May	103.83	103.70	104.87	104.46	103.84	104.65	101.98	104.71	99.18	103.02	104.10	105.89	101.19	105.01	105.75	109.31	104.83	-1.94	8.52	9.77
	Jun	107.72	106.99	107.96	109.97	108.50	108.59	106.75	108.72	105.22	108.70	107.89	106.23	103.42	103.98	106.77	108.62	109.27	3.75	10.78	9.90
	Jul	109.07	107.91	108.43	109.05	110.39	110.55	109.18	110.42	103.87	108.37	111.56	109.30	103.99	102.80	106.65	106.42	110.57	1.25	10.31	9.99
	Aug	110.49	108.95	109.94	111.03	112.77	112.85	109.96	112.10	102.96	110.68	112.96	110.01	100.88	106.37	108.07	111.63	111.67	1.30	10.92	10.20
	Sep	110.63	109.41	110.52	112.95	112.62	112.43	106.63	112.39	105.99	110.46	110.04	112.15	101.36	110.09	107.63	107.27	109.24	0.13	10.89	10.43
	Oct	111.19	110.01	110.10	114.31	113.46	113.52	109.63	111.56	110.75	109.37	110.76	105.81	101.41	109.02	108.43	105.98	110.82	0.51	11.46	10.69
	Nov	111.75	111.29	111.09	113.44	112.76	112.85	110.00	112.20	111.04	111.11	111.84	110.39	101.15	109.68	107.94	107.83	113.08	0.50	11.75	10.93
	Dec	112.25	111.17	111.03	113.48	113.42	113.36	109.71	113.78	111.83	111.53	112.91	111.66	100.85	109.18	109.29	111.29	112.71	0.45	10.70	11.04

Table 3 Urban Consumer Price Index (Base November 2009 = 100)

		All Items	All Items less Farm Produce.	All Items less Farm Produce. and Energy	Imported Food	Food	Food & Non Alcoholic Bev.	Alcoholic Beverage. Tobacco and Kola	Clothing and Footwear	Housing Water, Electricity. Gas and Other Fuel	Furnishings & Household Equipment Maintenance.	Health.	Transport	Communication	Recreation & Culture.	Education	Restaurant & Hotels	Miscellaneous Goods & Services	Month-on (%)	Year-on (%)	12-month average (%)
Weights		1000	575.22	440.93	155.13	476.82	490.59	11.19	65.5	191.51	49.74	27.4	74.54	10.14	7.2	40.05	14.49	17.65			
Please note that the above weights are only expenditure weights which are still adjusted by population across 37 states. They should not be taken as the final weights in the computation of the CPI																					
2011	Jan	110.67	108.52	105.96	67.19	111.70	116.52	107.80	114.90	110.79	112.37	111.65	108.28	105.83	108.12	111.17	113.25	111.57	-1.40	7.88	10.81
	Feb	114.24	114.13	114.36	117.57	115.51	115.16	110.25	115.13	115.51	114.44	118.61	111.63	101.90	103.74	111.66	114.88	114.59	3.22	9.43	10.62
	Mar	114.98	114.88	114.17	118.03	115.96	116.26	109.84	115.69	118.24	115.12	120.51	111.93	101.83	105.12	111.60	115.93	113.84	0.65	8.50	10.26
	Apr	115.53	116.28	116.15	114.89	116.39	115.46	112.29	116.27	116.09	114.77	117.78	112.23	102.48	106.12	111.60	115.11	115.49	0.48	9.11	10.01
	May	115.77	116.84	116.74	116.00	116.67	116.21	112.85	117.22	115.98	116.38	120.06	116.18	102.78	105.64	111.69	115.94	114.66	0.21	11.50	10.25
	Jun	116.64	116.65	116.26	112.40	117.97	117.21	112.12	117.23	116.33	115.36	121.10	116.51	102.02	106.47	111.71	116.84	114.71	0.75	8.28	10.03
	Jul	116.28	116.77	115.56	111.77	118.05	117.57	112.18	117.43	118.28	116.74	118.79	119.04	103.35	104.92	112.50	117.32	115.83	-0.31	6.61	9.71
	Aug	118.29	118.67	117.81	113.42	119.86	119.13	113.81	117.93	119.91	119.73	121.11	122.07	103.43	107.89	112.59	116.12	116.86	1.73	7.06	9.38
	Sep	119.97	121.32	119.56	115.52	120.68	119.75	114.14	118.37	124.85	120.22	123.56	121.34	103.72	108.22	113.21	117.67	117.18	1.42	8.44	9.18
	Oct	119.87	121.18	119.15	115.53	120.91	119.98	114.56	119.13	125.57	120.30	121.69	121.25	104.26	111.06	113.22	118.80	116.67	-0.09	7.80	8.88
	Nov	119.98	121.12	118.93	118.97	120.85	119.75	115.51	120.93	125.14	119.73	123.31	122.84	104.96	108.61	113.69	118.98	120.47	0.09	7.36	8.52
	Dec	122.34	122.00	119.60	121.12	124.52	123.82	115.19	120.19	128.04	119.20	122.14	128.17	104.63	107.89	114.60	121.11	117.37	1.97	8.99	8.40
2012	Jan	128.87	128.21	127.40	113.45	125.46	127.09	119.33	119.67	135.40	120.61	123.28	127.44	105.86	108.92	114.86	123.37	119.92	5.34	16.45	9.12
	Feb	129.23	128.41	127.55	113.50	126.26	126.22	119.33	119.69	135.48	120.62	123.29	127.47	105.86	108.92	114.88	123.37	119.92	0.28	13.12	9.44
	Mar	130.74	132.57	132.06	129.47	129.08	128.92	113.18	135.16	136.90	127.35	128.98	137.60	110.55	115.11	124.24	122.92	131.41	1.17	13.70	9.89
	Apr	131.07	132.98	132.58	130.72	129.37	129.21	114.59	136.31	136.95	128.09	129.35	137.58	111.10	116.40	124.44	123.07	132.27	0.25	13.45	10.26
	May	132.12	133.96	133.63	132.08	131.09	130.89	115.50	136.79	137.16	128.42	130.09	138.16	111.75	117.76	125.32	123.52	132.98	0.81	14.13	10.50
	Jun	134.15	135.84	133.97	132.06	131.43	131.26	116.09	137.04	146.51	128.30	130.43	138.29	112.14	117.62	125.46	123.72	133.39	1.53	15.01	11.06
	Jul	134.45	135.48	133.62	132.39	131.72	131.56	116.38	137.01	146.91	128.47	130.79	138.67	112.19	118.35	125.88	124.18	133.63	0.23	15.63	11.81
	Aug	135.39	136.72	134.31	133.76	132.52	132.35	117.02	137.90	148.34	129.48	131.54	139.64	112.60	119.25	126.07	126.04	134.80	0.70	14.46	12.42
	Sep	136.96	137.66	135.40	133.93	134.15	133.97	117.34	138.91	151.07	130.33	132.30	140.37	113.29	121.01	126.60	126.24	136.09	1.16	14.16	12.89
	Oct	138.16	138.31	135.64	134.48	135.30	135.10	117.61	139.67	152.91	131.22	132.99	141.55	113.65	121.93	127.93	126.85	136.86	0.87	15.26	13.51
	Nov	138.98	138.89	136.05	134.55	136.19	135.97	118.07	140.07	154.18	131.78	133.25	142.12	113.69	122.81	128.61	127.16	136.96	0.59	15.84	14.20

Table 3 Urban Consumer Price Index (Base November 2009 = 100)

	All Items	All Items less Farm Produce.	All Items less Farm Produce. and Energy	Imported Food	Food	Food & Non Alcoholic Bev.	Alcoholic Beverage. Tobacco and Kola	Clothing and Footwear	Housing Water, Electricity, Gas and Other Fuel	Furnishings & Household Equipment Maintenance.	Health.	Transport	Communication	Recreation & Culture.	Education	Restaurant & Hotels	Miscellaneous Goods & Services	Month-on (%)	Year-on (%)	12-month average (%)	
Weights	1000	575.22	440.93	155.13	476.82	490.59	11.19	65.5	191.51	49.74	27.4	74.54	10.14	7.2	40.05	14.49	17.65				
Please note that the above weights are only expenditure weights which are still adjusted by population across 37 states. They should not be taken as the final weights in the computation of the CPI																					
2013	Dec	140.03	139.80	136.87	136.74	137.58	137.35	118.76	141.15	155.10	132.05	133.56	143.15	113.83	122.84	129.03	127.28	137.21	0.76	14.46	14.64
	Jan	140.75	142.34	137.91	137.84	138.64	138.40	120.05	141.83	155.42	132.36	134.00	143.61	113.92	122.94	129.36	127.46	137.63	0.52	9.22	14.01
	Feb	141.96	142.35	137.91	137.85	139.86	139.61	120.96	143.04	156.70	133.28	135.29	144.91	114.35	124.06	130.50	128.62	138.91	0.86	9.85	13.70
	Mar	142.84	141.99	139.30	138.47	140.72	140.47	121.68	143.95	157.55	134.23	136.29	145.87	114.89	124.84	131.49	129.11	140.04	0.62	9.25	13.30
	Apr	143.72	142.58	140.13	138.60	141.97	141.70	122.47	144.73	158.32	134.64	136.69	146.27	114.96	125.38	131.60	129.26	140.30	0.62	9.66	12.97
	May	144.53	142.68	138.72	139.03	142.73	142.46	122.91	145.81	158.84	135.62	137.80	147.32	115.50	126.35	132.81	130.43	141.56	0.56	9.39	12.56
	Jun	145.47	143.13	139.09	140.38	143.89	143.59	123.65	146.53	159.90	135.91	138.62	148.13	115.69	126.63	132.96	131.29	142.12	0.65	8.44	12.00
	Jul	146.35	145.40	142.90	141.45	144.96	144.67	123.94	147.16	160.80	136.55	139.24	148.92	116.08	127.18	133.16	131.75	142.41	0.60	8.85	11.44
	Aug	146.81	147.67	144.13	142.64	145.80	145.49	124.15	147.25	160.82	136.65	139.26	149.10	116.23	127.22	133.34	132.12	142.67	0.31	8.43	10.95
	Sep	147.94	147.73	145.34	143.73	147.07	146.75	125.29	148.49	161.70	137.62	140.21	150.19	116.80	128.40	134.50	133.17	143.72	0.77	8.01	10.44
	Oct	149.07	148.62	145.96	144.96	148.31	147.99	126.15	149.81	162.59	138.45	141.36	151.35	117.69	129.47	135.61	134.44	144.98	0.77	7.90	9.85
	Nov	150.22	149.40	146.73	145.84	149.58	149.25	127.04	151.05	163.78	139.01	142.05	152.38	118.11	130.34	136.69	135.43	145.85	0.77	8.09	9.24
Dec	151.40	150.39	147.75	146.72	151.00	150.65	127.64	152.19	164.85	139.76	142.74	153.43	118.65	131.14	137.72	135.89	146.76	0.79	8.12	8.75	
2014	Jan	152.24	150.67	147.64	147.71	152.28	151.92	128.39	153.03	165.19	140.73	143.38	153.64	118.66	131.74	137.76	136.10	147.06	0.56	8.16	8.66
	Feb	153.02	151.56	148.86	148.58	153.21	152.84	128.90	153.64	165.85	141.09	144.39	154.39	119.18	132.42	138.42	136.49	147.49	0.51	7.79	8.49
	Mar	154.17	152.07	149.70	149.75	154.73	154.35	129.60	154.09	166.68	142.10	145.21	155.31	119.86	133.57	139.24	137.39	148.31	0.75	7.94	8.38
	Apr	155.14	152.63	150.01	150.66	156.07	155.68	130.46	154.71	167.40	142.68	145.52	155.67	120.21	134.46	139.76	138.42	149.53	0.63	7.95	8.25
	May	156.37	153.61	150.81	151.81	157.39	156.99	131.11	156.12	168.51	143.84	146.54	156.94	120.65	135.36	140.69	139.57	150.75	0.79	8.20	8.15
	Jun	157.63	154.60	151.81	152.76	158.76	158.35	132.25	157.46	169.84	144.89	147.77	158.03	121.26	136.19	141.30	140.85	151.81	0.81	8.36	8.15
	Jul	158.73	155.26	152.26	153.53	160.11	159.67	133.18	158.26	170.69	146.37	148.53	158.93	121.91	138.15	141.95	141.51	152.48	0.70	8.46	8.12
	Aug	159.54	156.09	153.06	154.56	161.08	160.64	133.93	158.76	171.15	147.23	149.35	159.92	122.02	139.39	142.77	142.20	153.05	0.51	8.67	8.14
	Sep	160.30	156.88	153.80	155.59	161.97	161.52	134.76	159.15	171.61	147.99	149.99	160.85	122.59	139.77	143.92	143.04	153.64	0.48	8.36	8.17

Table 3 Urban Consumer Price Index (Base November 2009 = 100)

	All Items	All Items less Farm Produce.	All Items less Farm Produce. and Energy	Imported Food	Food	Food & Non Alcoholic Bev.	Alcoholic Beverage. Tobacco and Kola	Clothing and Footwear	Housing Water, Electricity. Gas and Other Fuel	Furnishings & Household Equipment Maintenance.	Health.	Transport	Communication	Recreation & Culture.	Education	Restaurant & Hotels	Miscellaneous Goods & Services	Month-on (%)	Year-on (%)	12-month average (%)	
Weights	1000	575.22	440.93	155.13	476.82	490.59	11.19	65.5	191.51	49.74	27.4	74.54	10.14	7.2	40.05	14.49	17.65				
Please note that the above weights are only expenditure weights which are still adjusted by population across 37 states. They should not be taken as the final weights in the computation of the CPI																					
	Oct	161.09	157.88	154.76	156.48	162.74	162.29	135.58	160.14	172.27	148.95	150.69	161.68	122.77	140.31	145.22	144.03	154.56	0.50	8.06	8.18
	Nov	162.08	158.83	155.76	157.63	163.84	163.38	136.53	161.36	172.91	150.20	151.72	162.67	123.21	140.87	146.23	145.00	155.68	0.62	7.90	8.17
	Dec	163.43	160.06	157.05	159.21	165.39	164.92	138.07	162.88	173.81	151.56	152.74	163.99	123.51	141.75	147.43	146.43	157.13	0.83	7.95	8.15
2015	Jan	164.74	161.20	158.13	160.66	166.90	166.40	138.93	164.15	174.89	152.97	153.92	165.26	123.62	142.61	148.55	147.56	158.35	0.80	8.21	8.15
	Feb	165.89	162.38	159.37	162.25	168.20	167.69	140.16	165.12	175.79	154.20	155.03	166.56	124.06	143.54	149.30	148.68	159.36	0.70	8.41	8.21
	Mar	167.40	163.69	160.74	163.64	169.94	169.41	141.42	166.61	176.86	155.63	156.70	168.14	124.24	144.31	150.87	149.87	160.81	0.91	8.58	8.26
	Apr	168.71	164.75	161.74	164.90	171.58	171.04	142.71	167.53	177.89	156.44	157.78	169.50	124.54	144.90	151.62	150.76	161.79	0.78	8.74	8.33
	May	170.59	166.81	163.73	167.00	173.53	172.97	144.31	169.47	179.67	157.93	159.57	171.91	124.83	145.93	153.69	152.07	163.53	1.11	9.09	8.40
	Jun	172.18	168.19	164.92	168.64	175.39	174.80	145.38	170.54	181.07	158.67	160.52	174.23	125.36	147.39	154.94	153.28	165.06	0.93	9.23	8.48
	July	173.30	169.16	165.81	169.99	176.71	176.10	146.41	171.65	181.98	159.40	161.40	175.58	125.66	148.35	155.60	153.61	166.25	0.65	9.18	8.54
	Aug	174.30	170.18	166.70	171.31	177.85	177.24	146.94	172.42	182.91	160.44	162.24	176.06	125.92	148.81	157.02	154.36	167.34	0.57	9.25	8.59

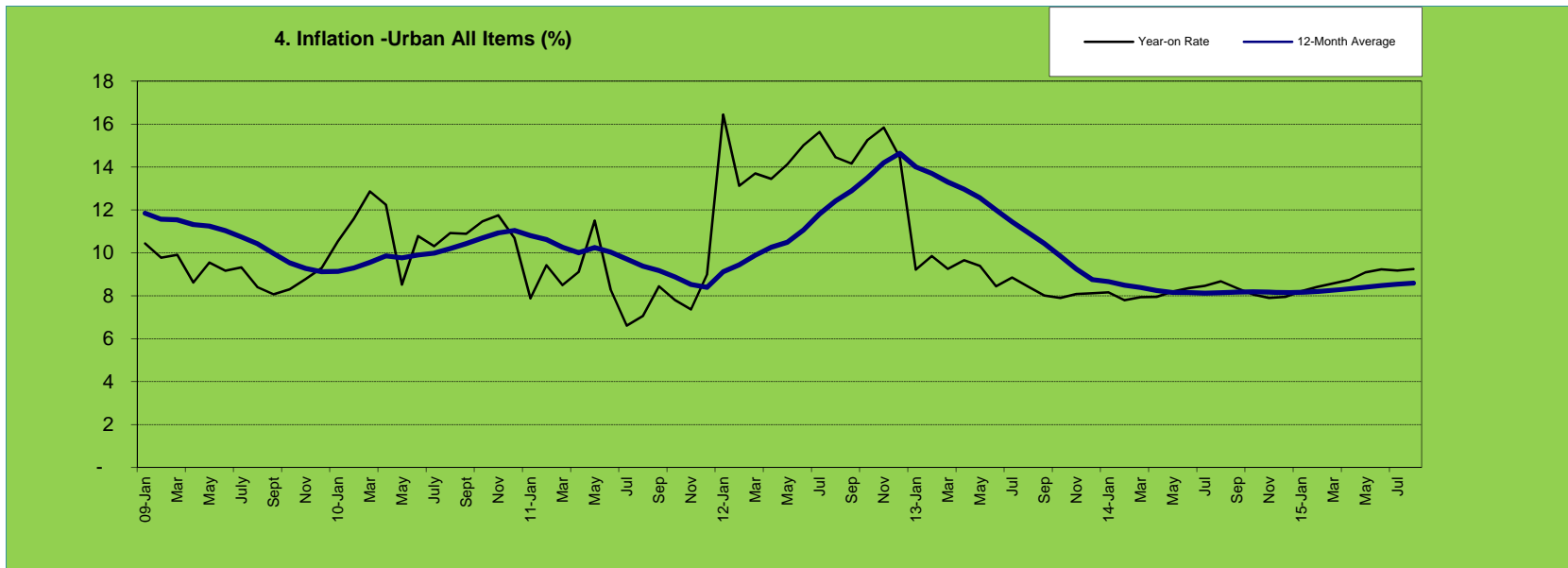


Table 4 Rural Consumer Price Index (Base November 2009 = 100)

		All Items	All Items less Farm Produce.	All Items less Farm Produce. and Energy	Imported Food	Food	Food & Non Alcoholic Bev.	Alcoholic Beverage, Tobacco and Kola	Clothing and Footwear	Housing Water, Electricity, Gas and Other Fuel	Furnishings & Household Equipment Maintenance.	Health.	Transport	Communication	Recreation & Culture.	Education	Restaurant & Hotels	Miscellaneous Goods & Services	Month-on (%)	Year-on (%)	12-month average (%)
Weights		1000.0	503.1	417.4	113.7	532.3	540.9	10.6	85.7	147.2	50.7	32.2	57.2	4.0	6.7	38.9	10.1	15.8			
2009	Jan	88.88	88.54	90.03		89.10	89.13	97.53	96.21	87.15	81.73	97.89	86.56	95.21	91.20	84.46	97.85	92.13	0.79	15.92	12.13
	Feb	89.52	89.48	90.24		89.60	89.62	98.30	95.68	89.02	81.93	99.02	85.58	95.24	89.72	85.40	98.83	93.05	0.72	17.15	13.09
	Mar	90.16	89.83	90.75		90.45	90.49	98.03	96.14	88.84	82.53	99.63	85.68	95.23	90.20	86.98	97.90	94.74	0.71	16.73	13.91
	Apr	90.73	90.21	91.74		91.30	91.32	97.99	96.18	88.53	84.44	102.35	92.04	95.23	90.79	88.92	99.54	95.26	0.64	15.73	14.64
	May	92.60	92.26	93.82		93.30	93.31	98.76	96.46	89.68	84.20	100.20	94.04	95.23	91.91	88.37	97.97	91.29	2.06	15.11	15.10
	June	94.41	93.67	95.14		95.37	95.34	98.58	97.11	93.43	84.81	100.76	89.65	95.23	92.13	88.65	98.17	97.54	1.95	12.21	15.07
	July	96.53	95.52	97.54		97.70	97.66	100.36	95.73	95.94	99.56	102.46	87.23	98.27	94.75	90.44	98.28	99.03	2.25	11.97	14.83
	Aug	97.81	96.10	96.87		98.77	98.73	99.65	98.33	95.59	100.59	102.99	89.89	100.95	96.24	101.34	98.95	100.05	1.32	12.38	14.80
	Sep	98.46	97.42	98.21		99.38	99.33	98.60	98.36	96.76	97.23	103.93	93.19	100.92	95.81	99.77	100.11	99.56	0.67	11.55	14.66
	Oct	99.16	98.39	98.96		100.03	100.02	99.54	98.85	97.91	97.95	104.38	94.64	100.00	96.01	96.55	99.58	98.91	0.71	13.24	14.49
	Nov	100.00	100.00	100.00	100.00	100.00	100.00	100.00	100.00	100.00	100.00	100.00	100.00	100.00	100.00	100.00	100.00	100.00	0.85	14.16	14.32
	Dec	102.78	101.66	102.09	102.29	103.06	103.53	103.49	102.03	99.24	102.40	102.03	101.61	100.63	99.90	102.11	102.04	101.90	2.78	16.56	14.32
2010	Jan	103.59	101.87	102.45	102.17	104.42	104.87	103.62	101.77	98.87	103.91	103.46	102.70	99.47	100.67	103.59	105.49	103.70	0.78	16.55	14.39
	Feb	105.58	103.76	104.66	103.33	106.44	106.92	103.49	103.27	100.55	105.54	104.51	105.32	100.52	99.50	104.34	106.03	105.58	1.92	17.93	14.49
	Mar	103.99	102.75	103.47	102.58	104.60	104.86	104.71	103.29	100.02	105.30	103.95	102.14	100.42	100.07	104.42	103.97	103.05	-1.50	15.35	14.40
	Apr	105.59	103.56	104.72	106.63	106.78	107.16	105.59	104.29	100.84	102.34	103.29	106.80	100.00	98.73	104.72	108.25	105.46	1.54	16.37	14.47
	May	107.23	106.48	107.90	105.35	107.20	107.51	105.26	106.84	104.57	102.26	105.39	106.60	99.41	101.78	111.01	110.72	109.10	1.55	15.79	14.54
	Jun	109.63	107.76	109.15	109.20	111.23	111.46	109.92	109.43	104.42	112.44	108.92	108.42	100.96	101.46	106.36	105.43	109.87	2.24	16.13	14.86
	Jul	110.66	107.57	109.19	109.48	112.64	113.16	109.85	110.22	106.18	109.56	109.20	105.91	101.39	103.09	104.92	103.88	110.74	0.94	14.63	15.07
	Aug	113.02	109.59	110.82	111.36	114.69	115.19	114.21	113.35	108.91	109.93	111.79	107.38	100.38	103.88	104.31	103.73	110.74	2.13	15.56	15.33
	Sep	113.84	111.74	112.71	114.06	115.11	114.45	110.89	112.43	113.12	113.46	113.57	112.21	102.21	106.93	108.96	106.99	113.83	0.73	15.62	15.66

Table 4 Rural Consumer Price Index (Base November 2009 = 100)

		All Items	All Items less Farm Produce.	All Items less Farm Produce. and Energy	Imported Food	Food	Food & Non Alcoholic Bev.	Alcoholic Beverage, Tobacco and Kola	Clothing and Footwear	Housing, Water, Electricity, Gas and Other Fuel	Furnishings & Household Equipment Maintenance.	Health.	Transport	Communication	Recreation & Culture.	Education	Restaurant & Hotels	Miscellaneous Goods & Services	Month-on (%)	Year-on (%)	12-month average (%)
	Weights	1000.0	503.1	417.4	113.7	532.3	540.9	10.6	85.7	147.2	50.7	32.2	57.2	4.0	6.7	38.9	10.1	15.8			
	Oct	113.99	113.47	113.57	113.90	114.40	114.53	113.51	113.88	111.16	116.43	118.14	108.08	104.14	110.03	111.52	110.60	110.50	0.13	14.95	15.79
	Nov	113.62	112.13	111.53	116.46	115.68	115.44	113.96	111.85	113.93	114.75	110.50	112.82	102.71	106.16	107.49	108.46	112.57	-0.33	13.62	15.72
	Dec	115.87	113.76	113.71	116.98	117.06	117.22	113.72	113.57	114.32	114.69	112.61	114.00	103.61	106.57	109.02	108.17	111.52	1.99	12.74	15.39
2011	Jan	119.70	119.52	118.90	120.13	116.53	120.50	113.01	113.98	116.42	114.53	111.09	110.03	101.78	108.53	109.43	108.18	114.47	3.30	15.55	15.31
	Feb	118.76	116.72	116.45	129.40	119.44	120.24	116.05	116.79	114.08	116.61	111.36	121.88	107.37	108.44	109.70	110.10	113.84	-0.79	12.48	14.86
	Mar	121.07	119.60	120.23	120.58	119.92	119.79	115.15	117.26	114.16	116.58	115.04	118.42	107.81	109.23	110.57	109.14	111.88	1.95	16.42	14.96
	Apr	119.44	119.17	119.43	122.65	121.09	120.10	116.35	116.11	125.13	116.01	116.72	116.89	107.23	107.84	111.18	111.88	114.09	-1.35	13.12	14.69
	May	121.21	120.62	120.85	124.36	120.11	120.40	116.94	119.04	125.52	116.71	113.77	115.37	108.12	108.85	112.08	111.96	116.37	1.48	13.04	14.46
	Jun	122.60	122.41	122.77	111.47	121.93	121.49	115.95	118.64	125.97	117.09	118.81	120.12	108.66	109.16	112.60	112.13	120.62	1.15	11.83	14.10
	Jul	123.61	122.84	123.44	113.28	122.37	122.45	112.52	117.85	125.97	118.24	117.90	122.14	108.53	116.24	112.76	113.13	123.17	0.82	11.70	13.84
	Aug	125.60	123.27	123.81	118.09	126.87	126.97	118.57	119.43	128.36	120.14	119.86	121.82	108.82	110.89	113.16	114.24	125.36	1.61	11.13	13.46
	Sep	127.36	125.28	125.27	119.40	128.21	127.97	117.97	121.24	127.15	118.37	121.32	123.06	108.27	111.03	114.24	114.03	125.21	1.40	11.88	13.16
	Oct	128.55	127.83	127.97	118.15	128.38	127.86	120.15	121.82	130.95	118.78	121.82	122.99	108.64	122.05	114.57	114.79	126.39	0.94	12.78	12.98
	Nov	128.55	127.42	127.30	128.59	129.12	129.61	121.80	122.64	130.52	120.67	122.16	123.66	108.86	121.65	114.58	115.08	129.67	0.00	13.15	12.95
	Dec	129.00	127.07	127.00	128.80	131.13	131.09	122.22	124.09	135.14	120.56	123.41	129.22	108.11	117.88	114.60	116.99	127.08	0.35	11.33	12.82
2012	Jan	131.28	129.86	130.74	128.39	132.43	133.95	126.42	122.28	128.74	120.59	122.21	128.15	111.00	119.17	115.20	117.25	130.84	1.77	9.68	12.33
	Feb	131.65	130.03	130.89	128.43	131.76	131.74	126.42	122.31	128.80	120.61	122.22	128.17	111.00	119.17	115.21	117.25	130.85	0.28	10.86	12.19
	Mar	134.40	137.14	136.51	130.26	134.90	134.69	127.43	132.31	142.68	133.25	130.22	129.98	114.58	117.93	126.73	120.21	131.74	2.09	11.01	11.76
	Apr	134.41	137.02	136.48	131.77	135.03	134.82	127.70	132.02	142.29	133.59	130.72	130.33	115.10	118.35	125.48	120.99	131.82	0.01	12.54	11.72
	May	135.41	138.89	138.53	132.91	136.55	136.33	128.13	132.63	142.57	133.92	131.28	130.66	115.29	118.77	125.65	121.92	132.24	0.74	11.71	11.62
	Jun	136.53	139.79	138.10	133.03	137.44	137.22	128.48	132.64	146.27	134.35	131.57	131.28	115.72	119.04	125.88	122.57	132.47	0.83	11.36	11.58
	Jul	136.87	140.37	138.92	133.29	137.98	137.75	128.95	132.91	146.38	134.22	131.63	131.56	115.76	119.07	125.85	122.89	132.73	0.25	10.73	11.50
	Aug	137.76	140.91	139.36	134.53	139.10	138.87	129.41	133.49	147.18	134.69	132.21	132.13	116.02	119.26	126.63	122.99	132.85	0.65	9.68	11.37
	Sep	138.99	141.34	139.58	134.40	140.55	140.31	130.00	134.25	148.92	135.68	132.39	132.92	116.25	119.99	126.78	123.98	132.90	0.89	9.13	11.13

Table 4 Rural Consumer Price Index (Base November 2009 = 100)

		All Items	All Items less Farm Produce.	All Items less Farm Produce. and Energy	Imported Food	Food	Food & Non Alcoholic Bev.	Alcoholic Beverage, Tobacco and Kola	Clothing and Footwear	Housing, Water, Electricity, Gas and Other Fuel	Furnishings & Household Equipment Maintenance.	Health.	Transport	Communication	Recreation & Culture.	Education	Restaurant & Hotels	Miscellaneous Goods & Services	Month-on (%)	Year-on (%)	12-month average (%)
	Weights	1000.0	503.1	417.4	113.7	532.3	540.9	10.6	85.7	147.2	50.7	32.2	57.2	4.0	6.7	38.9	10.1	15.8			
	Oct	140.21	141.92	140.11	135.99	142.02	141.77	131.03	135.45	149.86	135.99	133.05	133.98	116.61	120.67	128.20	124.31	134.03	0.88	9.07	10.82
	Nov	141.10	142.50	140.98	137.65	143.19	142.93	131.97	136.30	150.26	136.68	133.70	134.18	116.85	120.81	128.99	124.54	134.48	0.63	9.76	10.55
	Dec	142.13	143.54	141.90	138.33	144.51	144.24	132.84	137.11	151.05	136.95	134.11	135.67	117.03	121.23	129.10	125.20	134.96	0.73	10.18	10.46
2013	Jan	143.17	144.93	142.37	139.46	145.71	145.43	133.62	138.42	151.98	138.53	134.49	136.12	117.12	121.36	129.19	125.64	135.15	0.73	9.05	10.39
	Feb	144.10	144.93	142.68	140.10	146.42	146.14	134.71	139.66	153.37	139.70	135.57	137.35	117.60	122.37	129.93	126.62	136.22	0.65	9.46	10.28
	Mar	145.28	147.08	145.92	140.00	148.25	147.94	135.40	139.76	153.88	139.80	136.54	137.55	117.89	122.62	130.97	126.52	137.70	0.82	8.09	10.02
	Apr	146.38	146.51	144.39	140.49	149.15	148.85	136.17	141.23	154.67	142.17	137.93	139.00	118.03	124.46	132.77	127.27	139.11	0.76	8.91	9.73
	May	147.11	147.23	144.48	140.91	149.78	149.49	137.12	142.31	155.26	143.03	139.29	139.94	118.41	125.16	133.54	128.12	139.87	0.50	8.65	9.48
	Jun	147.90	147.56	144.77	142.20	150.82	150.51	137.54	142.75	155.88	143.91	140.03	140.16	118.73	125.80	133.63	128.42	140.31	0.54	8.33	9.24
	Jul	148.64	148.76	146.91	143.17	151.75	151.43	138.40	143.37	156.58	144.23	140.59	140.56	119.01	125.98	133.85	129.17	140.69	0.50	8.60	9.06
	Aug	148.95	150.25	148.16	143.70	152.35	152.03	138.80	143.50	156.22	144.29	140.66	140.59	119.05	126.12	134.10	129.21	140.77	0.20	8.12	8.93
	Sep	150.04	151.91	149.94	144.70	153.65	153.32	139.51	144.29	157.14	145.01	141.45	141.50	119.57	126.47	135.18	130.19	141.64	0.74	7.95	8.83
	Oct	151.14	152.82	150.84	145.88	154.83	154.50	140.65	145.36	157.92	146.21	142.48	142.50	120.47	127.43	136.41	131.22	142.80	0.73	7.79	8.72
	Nov	152.17	153.75	151.89	146.76	155.99	155.65	141.31	146.45	158.77	147.32	143.20	143.19	120.88	128.17	137.19	132.08	144.13	0.68	7.85	8.56
	Dec	153.33	155.19	153.37	148.01	157.36	157.03	141.96	147.47	159.54	148.48	144.14	144.08	121.32	128.98	138.02	133.27	145.23	0.76	7.88	8.38
2014	Jan	154.38	155.52	153.26	148.95	158.61	158.27	142.67	148.42	160.16	149.20	144.94	145.34	122.10	130.16	138.71	133.99	146.11	0.68	7.83	8.28
	Feb	155.13	156.15	154.22	149.57	159.54	159.20	143.20	149.16	160.71	149.87	145.43	145.87	122.30	131.33	138.88	134.39	146.36	0.49	7.66	8.13
	Mar	156.39	156.81	154.92	150.67	161.16	160.81	144.00	149.91	161.58	150.78	146.37	146.89	122.80	131.84	139.54	135.18	147.19	0.81	7.65	8.09
	Apr	157.32	157.57	155.71	151.46	162.33	161.98	144.74	150.70	162.34	151.28	146.89	147.57	123.41	132.54	139.94	135.67	147.41	0.59	7.47	7.97
	May	158.53	158.60	156.68	152.85	163.59	163.23	145.65	152.09	163.42	152.58	148.02	148.62	124.00	133.48	140.99	136.88	148.59	0.77	7.76	7.90
	Jun	159.71	159.67	157.65	153.99	164.85	164.49	146.60	153.22	164.75	153.66	148.86	149.61	124.66	134.30	141.36	137.83	149.71	0.74	7.98	7.87
	Jul	160.66	159.76	157.94	154.39	166.01	165.63	147.49	154.10	165.75	154.24	149.50	150.01	124.80	134.91	141.63	138.69	150.36	0.60	8.09	7.83
	Aug	161.41	160.35	158.52	155.14	166.84	166.47	148.22	154.88	166.19	154.96	150.29	150.66	125.00	135.50	142.53	139.16	151.20	0.47	8.37	7.86
	Sep	162.41	161.55	159.80	156.28	167.90	167.52	148.95	156.05	167.06	156.32	150.94	151.17	125.17	136.05	143.84	139.92	152.20	0.62	8.24	7.88

Table 4 Rural Consumer Price Index (Base November 2009 = 100)

		All Items	All Items less Farm Produce.	All Items less Farm Produce. and Energy	Imported Food	Food	Food & Non Alcoholic Bev.	Alcoholic Beverage, Tobacco and Kola	Clothing and Footwear	Housing, Water, Electricity, Gas and Other Fuel	Furnishings & Household Equipment Maintenance.	Health.	Transport	Communication	Recreation & Culture.	Education	Restaurant & Hotels	Miscellaneous Goods & Services	Month-on (%)	Year-on (%)	12-month average (%)
	Weights	1000.0	503.1	417.4	113.7	532.3	540.9	10.6	85.7	147.2	50.7	32.2	57.2	4.0	6.7	38.9	10.1	15.8			
	Oct	163.26	162.40	160.68	157.34	168.76	168.38	149.85	157.07	167.75	157.22	152.00	151.75	125.71	136.48	144.83	141.02	153.26	0.52	8.02	7.90
	Nov	164.19	163.30	161.59	158.34	169.71	169.33	150.47	158.24	168.63	158.20	152.99	152.27	126.04	137.05	145.81	141.87	154.19	0.57	7.90	7.91
	Dec	165.53	164.59	162.90	159.66	171.24	170.85	151.63	159.64	169.67	159.36	154.22	153.42	126.19	137.65	146.61	143.13	155.43	0.82	7.96	7.91
2015	Jan	166.87	165.81	164.16	160.99	172.67	172.28	152.59	161.14	170.91	160.78	155.49	154.38	126.39	138.63	147.74	144.40	156.52	0.81	8.09	7.94
	Feb	168.00	166.88	165.18	162.36	173.87	173.48	153.53	162.39	171.96	161.78	156.62	155.07	126.76	139.19	148.82	145.43	157.61	0.67	8.29	7.99
	Mar	169.52	168.28	166.59	163.65	175.63	175.23	154.62	163.79	173.24	163.30	158.03	156.16	127.02	139.92	149.78	146.59	159.05	0.91	8.40	8.05
	Apr	170.78	169.29	167.48	165.10	177.11	176.70	155.41	164.71	174.45	164.20	158.81	157.42	127.22	140.50	150.46	147.46	159.90	0.74	8.56	8.14
	May	172.63	171.25	169.27	166.80	178.93	178.52	156.93	166.75	176.62	165.91	160.76	159.13	127.62	141.66	151.86	149.10	161.78	1.08	8.90	8.24
	Jun	174.24	172.59	170.48	168.47	180.79	180.36	158.20	168.31	177.87	167.09	161.48	160.58	127.98	142.83	153.25	150.63	163.63	0.93	9.10	8.33
	July	175.50	173.70	171.54	169.97	182.22	181.79	159.29	169.62	179.04	167.74	162.59	161.62	128.31	143.72	154.29	151.78	164.51	0.73	9.24	8.43
	Aug	176.55	174.78	172.46	171.38	183.32	182.89	160.22	170.58	180.23	168.41	163.30	162.40	128.58	143.94	155.85	152.71	165.44	0.60	9.38	8.52

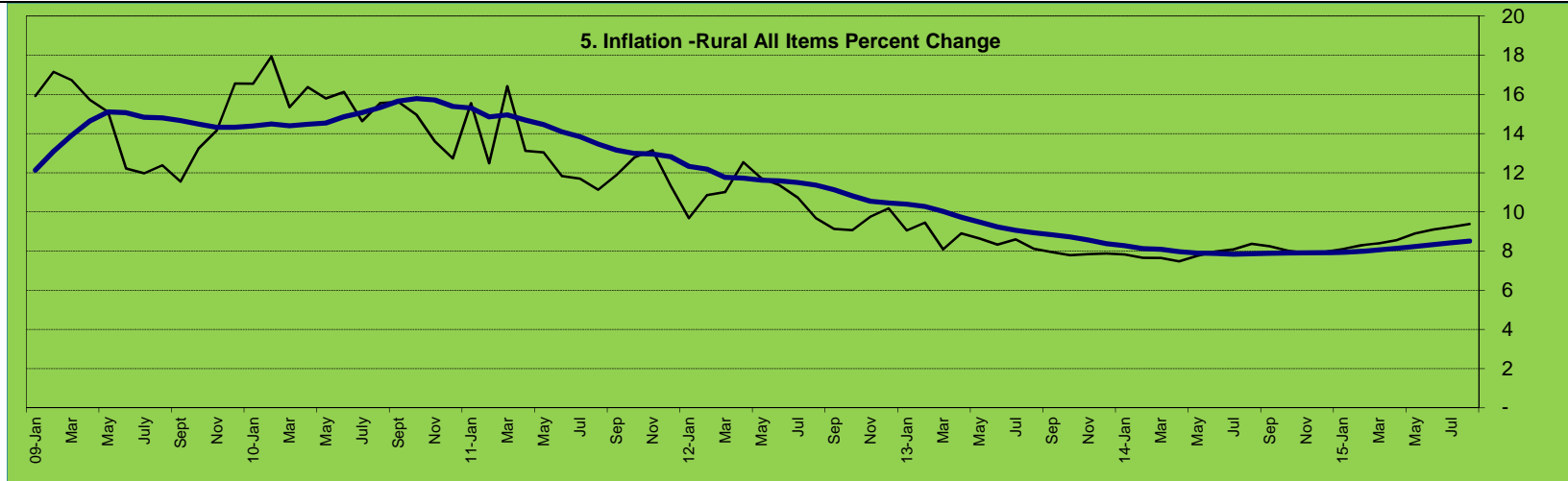


Table 5 Combined Urban And Rural State Consumer Price Index

(Base Period: November 2009 = 100)						
	AUG-14		JUL-15		AUG-15	
State	Food	All Items	Food	All Items	Food	All Items
Abia	170.02	161.89	187.12	177.69	188.67	178.80
Abuja	158.75	166.22	172.37	175.44	173.62	176.34
Adamawa	163.40	159.93	178.00	175.93	179.11	176.63
Akwalbom	167.81	158.39	186.04	174.28	187.11	175.43
Anambra	156.24	154.76	174.85	171.19	176.24	172.88
Bauchi	154.76	162.14	171.19	174.34	172.88	176.51
Bayelsa	173.31	171.05	191.78	186.79	192.88	187.62
Benue	180.23	168.82	194.96	182.96	195.29	183.74
Borno	163.71	155.99	182.69	171.92	183.59	172.44
Cross River	159.27	159.48	175.74	173.38	177.15	174.53
Delta	159.23	156.90	175.96	171.53	176.90	172.68
Ebonyi	158.94	155.37	171.66	167.56	172.72	168.69
Edo	157.98	174.86	174.48	186.85	175.61	187.67
Ekiti	158.16	154.73	171.56	166.14	171.81	166.81
Enugu	160.62	155.49	174.04	166.29	175.86	167.70
Gombe	163.78	161.11	180.36	176.32	181.49	177.41
Imo	163.45	157.76	179.00	170.85	180.20	171.94
Jigawa	164.40	160.53	179.25	173.98	179.51	174.45
Kaduna	163.92	160.10	180.60	176.67	182.19	177.80
Kano	160.57	158.23	176.36	172.54	177.83	174.08
Katsina	163.71	148.42	181.62	164.27	184.14	165.79
Kebbi	154.89	157.13	169.16	171.21	169.59	171.90
Kogi	219.87	203.25	233.08	217.16	232.01	216.60
Kwara	167.08	182.12	179.21	192.40	179.94	193.18
Lagos	172.31	170.80	186.79	185.29	187.60	185.95
Nassarawa	154.68	155.92	166.87	168.55	168.47	169.83
Niger	155.98	160.67	168.81	173.98	170.21	174.93
Ogun	163.14	163.68	182.52	180.11	182.91	180.79
Ondo	164.06	161.05	181.94	177.43	182.64	178.15
Osun	159.49	159.01	173.12	171.23	174.02	172.05
Oyo	176.91	169.95	191.15	184.02	192.02	184.86
Plateau	165.17	161.71	179.29	176.78	180.18	177.58
Rivers	166.86	158.71	182.89	172.82	183.45	173.41
Sokoto	156.85	154.08	170.24	168.35	170.97	169.52
Taraba	167.57	161.65	180.89	173.95	182.02	175.21
Yobe	167.42	164.15	185.27	179.49	185.49	179.80
Zamfara	160.51	156.76	177.38	171.93	179.71	173.82

Note: Indices may not be used for inter-state price comparison because market baskets differ from State to State