

CONSUMER PRICE INDEX  
(BASE PERIOD NOVEMBER 2009 = 100)



**NATIONAL BUREAU OF STATISTICS**

No. 514  
December 2012

## BRIEF METHODOLOGY:

The CPI measures the average change over time in prices of goods and services consumed by people for day-to-day living. The construction of the CPI combines economic theory, sampling and other statistical techniques using data from other surveys to produce a weighted measure of average price changes in the Nigerian economy. The weighting occurs to capture the importance of the selected commodities in the entire index. The production of the CPI requires skills of economists, statisticians, computer scientists, data collectors and others.

Key in the construction of the price index is the selection of the market basket of goods and services. Every month, 10,534 informants spread across the country provide price data for the computation of the CPI. The market items currently comprise of 740 goods and services regularly priced.

The first stage in the calculation of the CPI is the collection of prices on each item (740 goods and services) from outlets in each sector (rural or urban) for each state. Prices are then averaged for each item according to sector across the state. The next step is to use the average price to calculate the basic index for each commodity: The current year price of each commodity is compared with a base year's price to obtain a relative price.

Next we use the Laspeyres formula to compute an aggregated index for each class (which has a multitude of commodities which have similar consumption purposes): Here the sum of the product of weights

(obtained from the expenditure survey) and relative prices for each item is divided by the sum of the weight of the items in that class, and the result multiplied by 100 gives the required index number. This index number is still classified according to the urban or rural classification sector for each of the 36 states and the FCT. This yields 85 classes then 48 groups which are then reclassified into 12 Divisions to derive:

1. The country composite index
2. The Urban Composite index
3. The Rural Composite index
4. The Combined Urban and Rural State Composite index

The survey methodology generates 3774 all items indices for all states and the FCT.

This edition of the Statistical News contains the revised Consumer Price Index (CPI) based on Nigeria Living Standard Survey (NLSS) 2003/2004. The consumption expenditure data were re-valued to November 2009, which is the base period for the revised CPI.

The May 2003 and September 1985 based indices are being continued using factors derived from the new CPI. All of these indices will yield the same price change for any commodity group contained in all the series. A new sub index – Imported Food Index- is available in the revised CPI.

Note: The urban and rural indices were weighted with the ratio of their populations to the national i.e. 0.455 and 0.545 respectively to compute the composite indices at the 12 COICOP functions and all items

levels. This may cause variance between a recalculated all items index using the weights published on table 2 and the published all items index because the published weights

were computed only from consumption expenditure survey result. The following breakdown highlights a non-exhaustive list of the components of the current CPI:

### **FOOD AND NON ALCOHOLIC BEVERAGES**

Food

Bread and cereals

Meat

Fish

Milk, cheese and eggs

Oils and fats

Fruit

Vegetables

Potatoes, Yam & other tubers

Food products n.e.c

Coffee, tea and cocoa

Soft drinks

### **ALCOHOLIC BEVERAGES, TOBACCO AND KOLA**

Spirits

Wine

Tobacco

Narcotics

### **CLOTHING AND FOOTWEAR**

Clothing materials, other articles of clothing

Garments

Cleaning, repair and hire of clothing

Shoes and other footwear

Repair and hire of footwear

### **HOUSING, WATER, ELECTRICITY, GAS**

Actual and imputed rentals for housing

Water supply

Miscellaneous services relating to the dwelling

Electricity

Gas

Liquid fuel

Solid fuels

### **FURNISHINGS, HOUSEHOLD EQUIPMENT**

Furniture and furnishings

Carpets and other floor coverings

Repair of Furniture

Household textiles

Major household appliances whether electric or not

Repair of household appliances

Glassware, tableware and household utensils
Non-durable household goods
Domestic services and household services
<b>HEALTH</b>
Pharmaceutical products
Medical services
Dental services
Paramedical services
Hospital services
<b>TRANSPORT</b>
Motor cars
Motor cycles
Bicycles
Vehicle spare parts
Fuels and lubricants for personal transportation
Maintenance and repair of personal transport
Passenger transport by road
Passenger transport by air
Passenger transport by sea and inland waterways
<b>COMMUNICATION</b>
Postal services
Telephone and telefax equipment
Telephone and telefax services
<b>RECREATION AND CULTURE</b>
Audio-visual, photographic and information processing equipments
Photographic development
Musical instrument
Recreational and sporting services
Games of chance
<b>EDUCATION</b>
Books & stationery
<b>RESTAURANTS AND HOTELS</b>
Catering services
Accommodation services
<b>MISCELLANEOUS GOODS AND SERVICES</b>
Hairdressing salons and personal grooming establishments
Appliances, articles and products for personal care
Jewellery, clocks and watches
Insurance
Other services.

## ALL ITEMS INDEX

In December 2012, the composite Consumer Price Index which measures inflation rose to 12.0 per cent year-on-year (compared to 12.3 per cent in November). On a year-on-year basis, the relative increase in the headline index in December was as a result of higher prices in the Core Index. This is the second consecutive month where the Core index has deviated from the downward trend it exhibited since the month of July, increasing to 13.7 per cent (from 13.1 in November). On the other hand, food prices moderated during December, giving temporary respite from the lagged effects of the floods which occurred from July to Mid-October, as well as other demand and supply conditions. The Food index increased year on year to 10.2 percent from 11.6 percent in November.

It should be noted that the Headline Index is made up of *the Core Index* and *Farm Produce items*. As Processed Foods are included in both the Core and Food sub-indices, this implies that these sub-indices

are not mutually-exclusive. In December, the composite CPI increased by 0.75 percent month-on-month from index levels recorded in November 2012.

The Urban inflation rate was recorded at 14.5 percent year-on-year, a decrease of 1.3 percentage points from the 15.8 percent recorded in November, while the Rural index increased by 0.4 percentage points to 10.2 percent on a year-on-year basis.

On a month-on-month basis, the Urban All-item index increased by 0.8percent from levels recorded in November, while the Rural All Items index increased by 0.7 percent between November and December. The percentage change in the average composite CPI for the twelve-month period ending December 2012 over the average of the CPI for the previous twelve-month period was recorded at 12.2 percent. The corresponding 12-month year-on-year average percentage change for the Urban index was 14.6 percent while the corresponding Rural index remained unchanged at 10.5 per cent.

## FOOD INDEX

In December, the composite Food Index increased year-on-year by 10.2 percent to 141.2 points. This was 1.4 percentage points higher than 11.6 percent recorded in November.

On a month-on-month basis, the Food index increased by 1.0 percent from November to December. The rise in the Food Index was as a result of higher food prices in various classes within the index led by bread and cereals, higher vegetable prices due to the dry season and higher

prices of potato, yams, and other tubers. The higher food prices occurred largely as a result of increases in eight of the eleven food classes.

On a year-on-year basis, the moderation in food prices in December was the first in five months. The average annual rate of rise of the index for the twelve-month period ending in December 2012 was 11.3 percent when compared to the same period in 2011.

## ALL ITEMS LESS FARM PRODUCE

In December, the "All items less Farm Produce" index which excludes

the prices of volatile agricultural products increased by 13.7 percent year-on-year. This was 0.6

---

percentage points higher than the 13.1 percent recorded in November. On month-on-month basis, the Core index increased by 0.7 percent from levels recorded in November. The increases in the Core index was as a result of increases in the Housing, Electricity, Gas and other Fuels division, in particular liquid (kerosene) and solid fuels (firewood

and charcoal), rental and imputed rent prices, clothing prices, garment prices, and air transport fares. The average 12 month annual rate of rise of the index was recorded at 13.9 percent (year-on-year) for the twelve-month period ending December 2012, 0.3 percentage points from the 13.6 percent recorded in November.

---

For enquiries relating to this CPI report, please contact:  
[sg@nigerianstat.gov.ng](mailto:sg@nigerianstat.gov.ng) and [kocimo@nigerianstat.gov.ng](mailto:kocimo@nigerianstat.gov.ng)

**Follow us on twitter @nigerianstat and online at [www.nigerianstat.gov.ng](http://www.nigerianstat.gov.ng)**

Table 1 Composite Consumer Price Index (Base November 2009 = 100)

		All Items Index (Farm Produce + All Items Less Farm Produce)					All Items less Farm Produce (includes Processed Food)				Food (Farm Produce + Processed Food)			
		Monthly	12-Month Average	Month-on change (%)	Year-on change (%)	12-Month average change (%)	Monthly	Month-on change (%)	Year-on change (%)	12-Month average change (%)	Monthly	Month-on change (%)	Year-on change (%)	12-Month average change (%)
Weights**		1000.0					513.10				507.06			
Please note that the above weights are only expenditure weights which are still adjusted by population across 37 states. They should not be taken as the final weights in the computation of the CPI														
2008	Jan	79.1	76.8	1.4	8.6	5.5	84.4	2.1	2.5	7.9	75.5	0.5	12.6	2.9
	Feb	79.3	77.3	0.3	8.0	5.5	85.5	1.4	6.4	7.5	75.2	-0.5	8.7	3.3
	Mar	79.9	77.8	0.8	7.8	5.8	82.2	-3.9	0.5	6.8	78.2	4.1	12.4	4.2
	Apr	81.1	78.3	1.6	8.2	6.1	83.5	1.5	1.2	6.4	79.4	1.5	13.1	5.1
	May	82.7	78.9	1.9	9.7	6.5	85.7	2.7	3.3	6.3	80.8	1.7	14.7	6.1
	Jun	85.7	79.6	3.7	12.0	7.0	87.9	2.5	3.6	5.8	84.5	4.6	18.1	7.4
	Jul	87.6	80.5	2.2	14.0	7.8	89.4	1.7	4.8	5.4	86.7	2.6	20.9	9.0
	Aug	88.6	81.3	1.2	12.4	8.5	90.0	0.7	3.9	4.8	87.7	1.2	18.8	10.7
	Sep	89.6	82.2	1.1	13.0	9.2	91.3	1.4	6.9	4.5	88.5	0.8	17.1	12.3
	Oct	89.0	83.2	-0.6	14.7	10.1	90.8	-0.6	7.9	4.3	88.0	-0.5	19.2	14.0
	Nov	89.0	84.1	-0.05	14.8	10.9	90.3	-0.5	9.3	4.5	88.1	0.1	18.1	15.3
	Dec	89.7	85.1	0.8	15.1	11.6	91.2	1.0	10.4	5.1	88.6	0.6	18.0	16.1
2009	Jan	90.2	86.0	0.5	14.0	12.0	91.1	-0.1	8.0	5.5	89.5	0.9	18.4	16.5
	Feb	90.8	87.0	0.7	14.6	12.6	91.7	0.6	7.2	5.6	90.2	0.8	20.0	17.5
	Mar	91.4	87.9	0.6	14.4	13.1	92.0	0.3	11.8	6.5	90.9	0.8	16.2	17.7
	Apr	91.9	88.8	0.6	13.3	13.5	92.5	0.6	10.9	7.3	91.6	0.7	15.3	17.9
	May	93.6	89.8	1.8	13.2	13.8	94.2	1.8	9.9	7.8	93.5	2.0	15.7	17.9

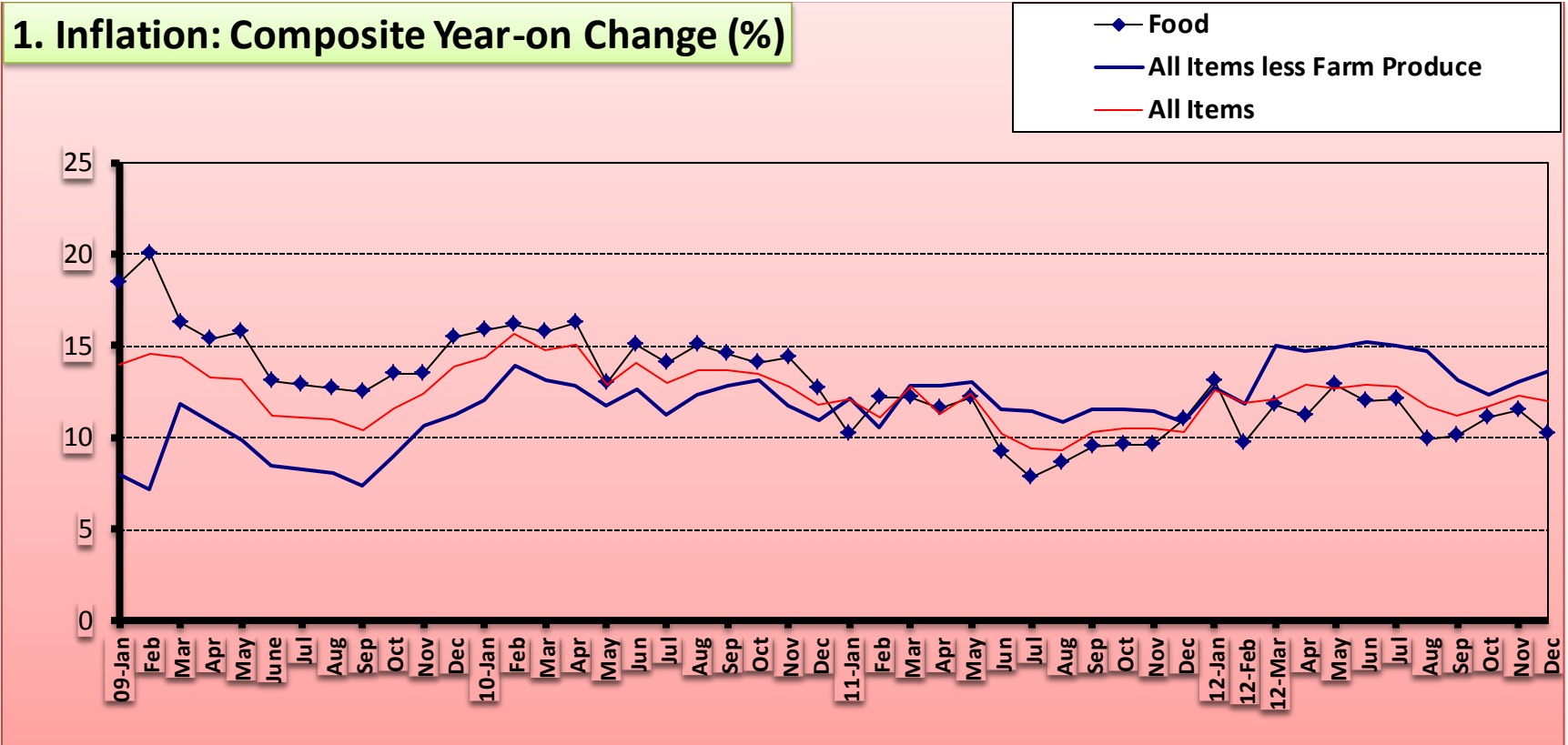
Table 1 Composite Consumer Price Index (Base November 2009 = 100)														
		All Items Index (Farm Produce + All Items Less Farm Produce)					All Items less Farm Produce (includes Processed Food)				Food (Farm Produce + Processed Food)			
		Monthly	12-Month Average	Month-on change (%)	Year-on change (%)	12-Month average change (%)	Monthly	Month-on change (%)	Year-on change (%)	12-Month average change (%)	Monthly	Month-on change (%)	Year-on change (%)	12-Month average change (%)
Weights**		1000.0					513.10				507.06			
Please note that the above weights are only expenditure weights which are still adjusted by population across 37 states. They should not be taken as the final weights in the computation of the CPI														
	June	95.3	90.6	1.8	11.2	13.7	95.3	1.2	8.5	8.3	95.6	2.2	13.1	17.5
	July	97.3	91.4	2.1	11.1	13.4	96.8	1.5	8.3	8.6	97.9	2.4	12.9	16.8
	Aug	98.4	92.2	1.1	11.0	13.3	97.3	0.5	8.0	8.9	98.9	1.1	12.7	16.3
	Sep	98.9	93.0	0.5	10.4	13.1	98.1	0.8	7.4	8.9	99.5	0.6	12.5	15.9
	Oct	99.4	93.8	0.5	11.6	12.8	98.9	0.8	8.9	9.0	99.9	0.4	13.5	15.4
	Nov	100.0	94.7	0.7	12.4	12.6	100.0	1.1	10.7	9.1	100.0	0.1	13.5	15.0
	Dec	102.2	95.8	2.2	13.9	12.5	101.5	1.5	11.2	9.2	102.4	2.4	15.5	14.8
2010	Jan	103.1	96.9	1.0	14.4	12.6	102.1	0.6	12.1	9.6	103.7	1.3	15.9	14.7
	Feb	105.0	98.0	1.9	15.6	12.7	104.5	2.3	14.0	10.1	104.8	1.1	16.2	14.4
	Mar	104.9	99.2	-0.1	14.8	12.8	104.1	-0.4	13.2	10.3	105.3	0.4	15.8	14.4
	Apr	105.7	100.3	0.8	15.0	12.9	104.4	0.3	12.8	10.4	106.6	1.2	16.3	14.5
	May	105.7	101.3	-0.04	12.9	12.9	105.2	0.8	11.7	10.6	105.7	-0.8	13.0	14.3
	Jun	108.8	102.4	2.91	14.1	13.1	107.4	2.1	12.7	10.9	110.0	4.1	15.1	14.4
	Jul	109.9	103.5	1.08	13.0	13.3	107.7	0.3	11.3	11.2	111.6	1.5	14.0	14.5
	Aug	111.9	104.6	1.76	13.7	13.5	109.3	1.5	12.4	11.5	113.8	2.0	15.1	14.7
	Sep	112.4	105.7	0.46	13.6	13.8	110.7	1.3	12.8	12.0	114.0	0.1	14.6	14.9



Table 1 Composite Consumer Price Index (Base November 2009 = 100)														
		All Items Index (Farm Produce + All Items Less Farm Produce)					All Items less Farm Produce (includes Processed Food)				Food (Farm Produce + Processed Food)			
		Monthly	12-Month Average	Month-on change (%)	Year-on change (%)	12-Month average change (%)	Monthly	Month-on change (%)	Year-on change (%)	12-Month average change (%)	Monthly	Month-on change (%)	Year-on change (%)	12-Month average change (%)
Weights**		1000.0					513.10				507.06			
Please note that the above weights are only expenditure weights which are still adjusted by population across 37 states. They should not be taken as the final weights in the computation of the CPI														
	Oct	112.7	106.9	0.30	13.4	13.9	111.9	1.1	13.2	12.3	114.0	-0.0	14.1	14.9
	Nov	112.8	107.9	0.04	12.8	13.9	111.7	-0.1	11.7	12.4	114.4	0.3	14.4	15.0
	Dec	114.2	108.9	1.29	11.8	13.7	112.6	0.7	10.9	12.4	115.4	0.9	12.7	14.7
2011	Jan	115.6	110.0	1.20	12.1	13.5	114.5	1.7	12.1	12.4	114.3	-0.9	10.3	14.2
	Feb	116.7	110.9	0.96	11.1	13.2	115.5	0.9	10.6	12.1	117.7	2.9	12.2	13.9
	Mar	118.3	112.1	1.37	12.8	13.0	117.5	1.7	12.8	12.1	118.1	0.4	12.2	13.6
	Apr	117.7	113.0	-0.54	11.3	12.7	117.9	0.3	12.9	12.1	119.0	0.7	11.6	13.2
	May	118.7	114.1	0.91	12.4	12.6	118.9	0.9	13.0	12.2	118.5	-0.3	12.2	13.2
	Jun	119.9	115.1	0.97	10.2	12.3	119.8	0.7	11.5	12.1	120.1	1.3	9.2	12.7
	Jul	120.3	115.9	0.32	9.4	12.0	120.1	0.2	11.5	12.1	120.4	0.2	7.9	12.1
	Aug	122.3	116.8	1.67	9.3	11.6	121.2	0.9	10.9	12.0	123.7	2.7	8.7	11.6
	Sep	124.0	117.8	1.41	10.3	11.4	123.5	1.9	11.6	11.9	124.8	0.9	9.5	11.2
	Oct	124.6	118.8	0.49	10.5	11.1	124.8	1.1	11.5	11.7	125.0	0.2	9.7	10.8
	Nov	124.7	119.7	0.04	10.5	11.0	124.6	-0.2	11.5	11.7	125.4	0.3	9.6	10.4
	Dec	126.0	120.7	1.06	10.3	10.8	124.8	0.2	10.8	11.7	128.1	2.2	11.0	10.3

Table 1 Composite Consumer Price Index (Base November 2009 = 100)

		All Items Index (Farm Produce + All Items Less Farm Produce)					All Items less Farm Produce (includes Processed Food)				Food (Farm Produce + Processed Food)			
		Monthly	12-Month Average	Month-on change (%)	Year-on change (%)	12-Month average change (%)	Monthly	Month-on change (%)	Year-on change (%)	12-Month average change (%)	Monthly	Month-on change (%)	Year-on change (%)	12-Month average change (%)
Weights**		1000.0					513.10				507.06			
Please note that the above weights are only expenditure weights which are still adjusted by population across 37 states. They should not be taken as the final weights in the computation of the CPI														
2012	Jan	130.2	121.9	3.35	12.6	10.9	129.1	3.5	12.7	11.8	129.3	0.9	13.1	10.5
	Feb	130.5	123.1	0.28	11.9	11.0	129.3	0.1	11.9	11.9	129.1	-0.1	9.7	10.3
	Mar	132.6	124.3	1.59	12.1	10.9	135.1	4.5	15.0	12.1	132.1	2.3	11.8	10.3
	Apr	132.8	125.5	0.13	12.9	11.1	135.2	0.1	14.7	12.2	132.3	0.2	11.2	10.3
	May	133.8	126.8	0.75	12.7	11.1	136.7	1.1	14.9	12.4	133.9	1.2	12.9	10.4
	Jun	135.3	128.1	1.15	12.9	11.3	138.0	1.0	15.2	12.7	134.5	0.5	12.0	10.6
	Jul	135.7	129.4	0.24	12.8	11.6	138.1	0.1	15.0	13.0	135.0	0.3	12.1	11.0
	Aug	136.6	130.6	0.67	11.7	11.8	139.0	0.6	14.7	13.3	135.9	0.7	9.9	11.1
	Sep	138.0	131.7	1.01	11.3	11.9	139.7	0.5	13.1	13.5	137.5	1.1	10.2	11.1
	Oct	139.2	133.0	0.88	11.7	11.9	140.3	0.4	12.4	13.5	138.8	1.0	11.1	11.2
	Nov	140.0	134.2	0.60	12.3	12.1	140.9	0.4	13.1	13.6	139.8	0.7	11.6	11.4
	Dec	141.1	135.5	0.75	12.0	12.2	141.8	0.7	13.7	13.9	141.2	1.0	10.2	11.3



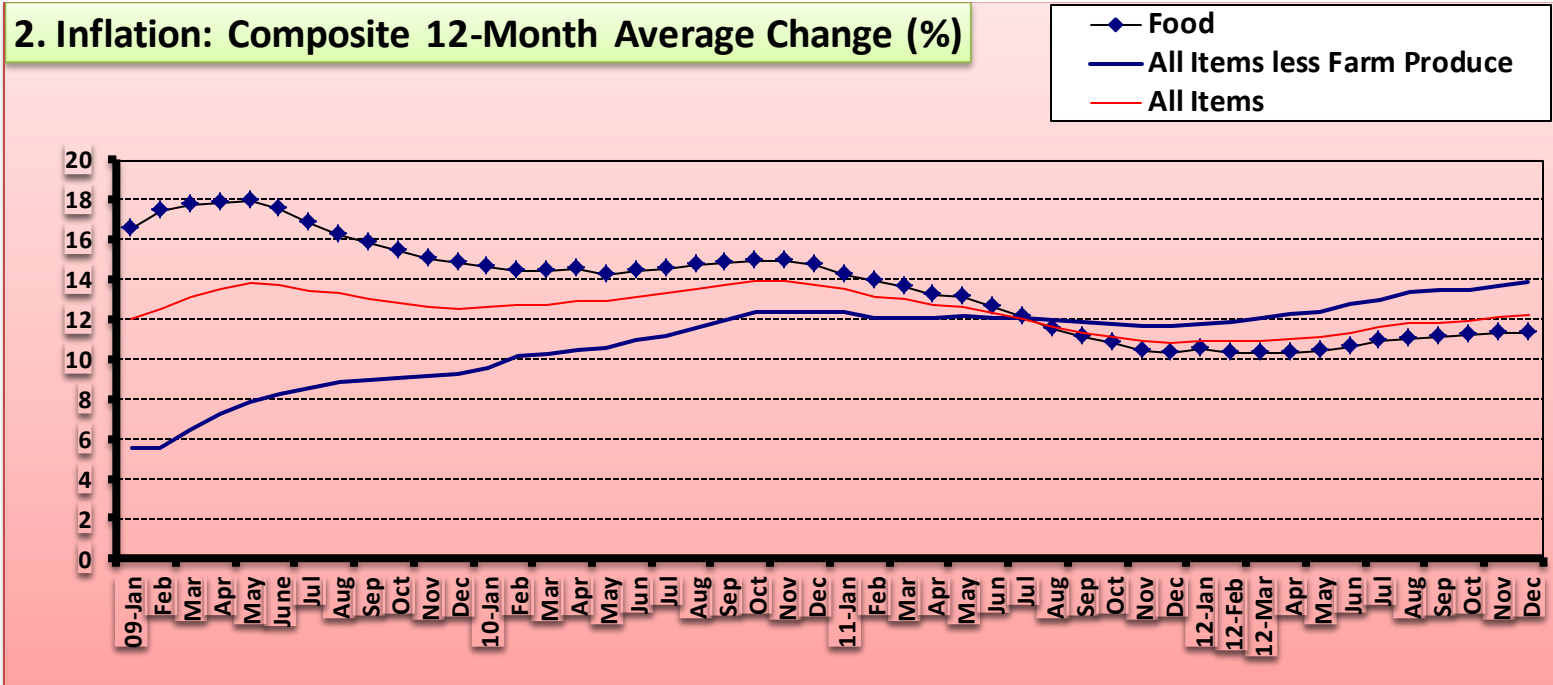


Table 2 Composite Consumer Price Index (Base November 2009 = 100)

		All Items	All Items less Farm Produce.	All Items less Farm Produce. and Energy	Imported Food	Food	Food & Non Alcoholic Bev.	Alcoholic Beverage. Tobacco and Kola	Clothing and Footwear	Housing Water, Electricity. Gas and Other Fuel	Furnishings & Household Equipment Maintenance.	Health.	Transport	Communication	Recreation & Culture.	Education	Restaurant & Hotels	Miscellaneous Goods & Services	Month-on (%)	Year-on (%)	12-month average (%)
Weights**		1000	513.1	428.1	132.5	507.06	518	10.87	76.5	167.3	50.26	30	65.1	6.8	6.91	39.44	12.1	16.6			
Please note that the above weights are only expenditure weights which are still adjusted by population across 37 states. They should not be taken as the final weights in the computation of the CPI																					
2008	Jan	79.1	84.4	82.2		75.5	75.8	96.7	86.3	84.6	78.2	83.9	86.5	83.1	88.8	75.3	76.9	82.1	1.4	8.6	5.5
	Feb	79.3	85.5	84.9		75.2	75.4	95.7	86.6	85.2	78.5	83.4	88.4	82.9	87.1	75.5	78.4	81.8	0.3	8.0	5.5
	Mar	79.9	82.2	80.8		78.2	78.4	98.1	85.1	83.3	80.5	86.1	84.4	81.9	88.2	74.8	79.6	79.4	0.8	7.8	5.8
	Apr	81.1	83.5	83.0		79.4	79.7	97.7	89.4	84.3	81.6	89.4	88.6	93.9	87.9	73.7	82.8	80.5	1.6	8.2	6.1
	May	82.7	85.7	84.8		80.8	81.0	99.7	90.7	85.6	83.7	90.5	87.9	97.6	89.0	74.9	91.9	86.4	1.9	9.7	6.5
	Jun	85.7	87.9	88.4		84.5	84.6	99.4	92.8	88.4	86.3	91.6	88.3	96.5	88.7	78.4	94.3	86.4	3.7	12.0	7.0
	Jul	87.6	89.4	87.6		86.7	86.8	100.2	94.2	90.8	87.8	93.5	89.7	97.3	90.9	80.9	94.3	90.8	2.2	14.0	7.8
	Aug	88.6	90.0	89.4		87.7	87.8	100.3	95.7	92.5	87.4	92.4	88.6	97.3	92.4	83.7	97.8	88.0	1.2	12.4	8.5
	Sep	89.6	91.3	90.2		88.5	88.5	99.2	95.5	94.1	87.4	92.3	88.3	97.7	92.5	83.1	97.1	88.9	1.1	13.0	9.2
	Oct	89.0	90.8	90.5		88.0	88.1	97.8	96.0	93.3	88.0	93.3	88.8	97.3	92.9	84.7	97.6	90.5	-0.6	14.7	10.1
	Nov	89.0	90.3	90.1		88.1	88.2	97.6	95.9	92.0	87.1	94.2	89.2	97.1	93.9	84.9	98.0	91.1	0.05	14.8	10.9
	Dec	89.7	91.2	91.7		88.6	88.7	97.5	96.9	93.5	87.1	96.1	90.9	97.1	93.5	87.6	99.5	92.9	0.8	15.1	11.6
2009	Jan	90.2	91.1	92.6		89.5	89.5	97.6	97.0	92.3	87.3	97.1	91.2	97.1	93.7	88.3	99.4	93.9	0.5	14.0	12.0
	Feb	90.8	91.7	92.6		90.2	90.2	98.5	97.0	92.6	87.4	98.6	90.2	97.1	92.8	88.1	100.4	94.1	0.7	14.6	12.6
	Mar	91.4	92.0	93.1		90.9	91.0	98.5	97.1	92.6	87.9	99.0	91.0	97.1	92.7	89.9	100.2	94.9	0.6	14.4	13.1
	Apr	91.9	92.5	94.1		91.6	91.7	99.1	97.5	92.9	89.6	101.1	94.4	97.1	93.4	89.3	101.3	95.4	0.6	13.3	13.5
	May	93.6	94.2	95.4		93.5	93.5	99.5	96.7	94.3	88.8	99.2	96.0	97.1	94.6	92.3	100.2	94.5	1.8	13.2	13.8
	June	95.3	95.3	96.6		95.6	95.6	99.7	97.1	96.3	89.6	100.1	94.0	97.1	95.0	92.6	101.1	97.8	1.8	11.2	13.7
	July	97.3	96.8	98.4		97.9	97.8	101.4	97.9	98.3	99.3	101.7	92.5	99.4	96.8	93.9	98.9	98.8	2.1	11.1	13.4
	Aug	98.4	97.3	97.7		98.9	98.9	100.2	99.1	98.4	100.2	101.8	93.1	101.5	98.1	99.4	101.2	100.0	1.1	11.0	13.3
	Sep	98.9	98.1	98.5		99.5	99.5	99.3	99.1	98.7	98.7	101.6	94.9	101.2	97.6	99.6	99.9	100.1	0.5	10.4	13.1

Table 2 Composite Consumer Price Index (Base November 2009 = 100)

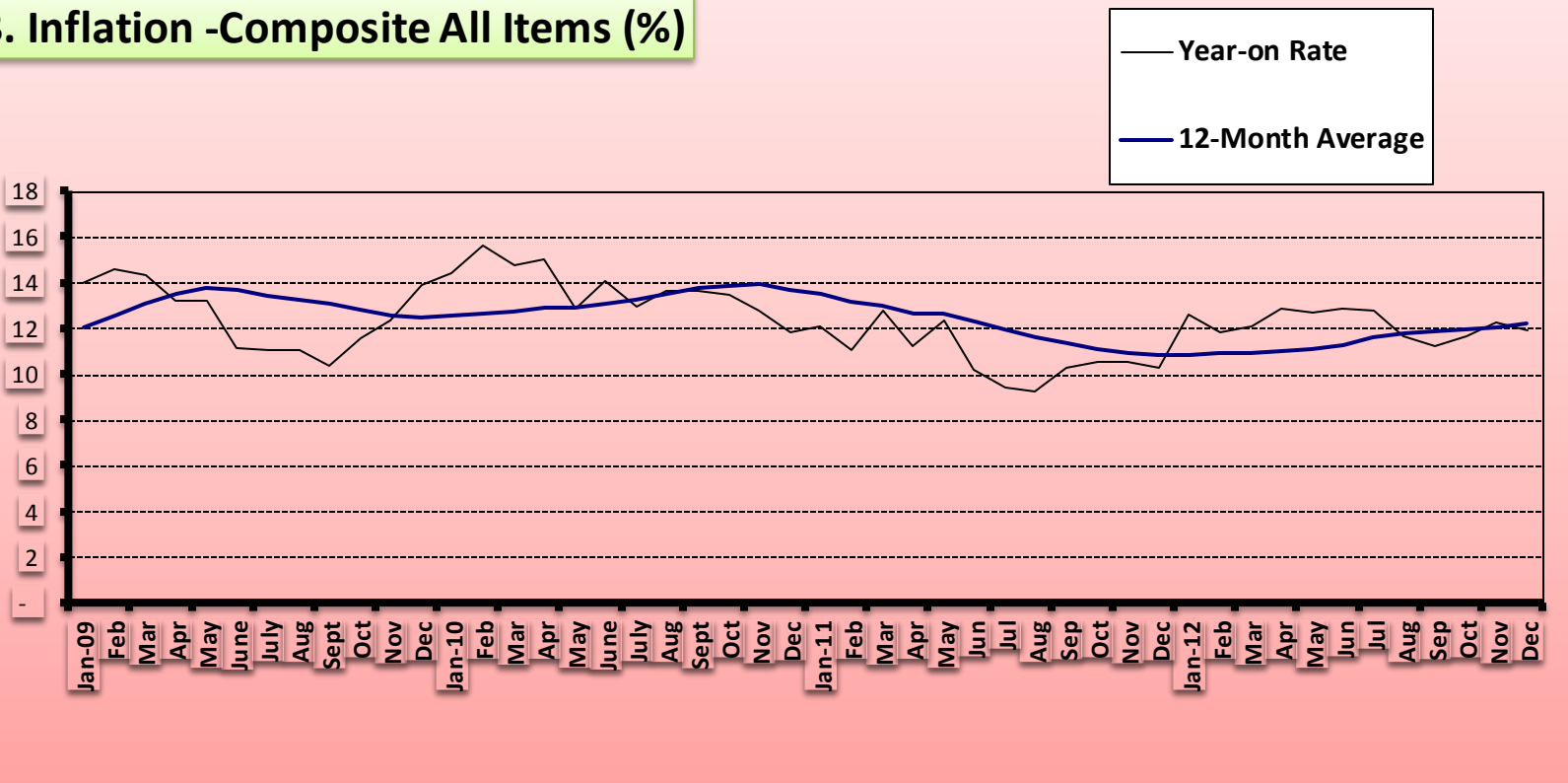
		All Items	All Items less Farm Produce.	All Items less Farm Produce. and Energy	Imported Food	Food	Food & Non Alcoholic Bev.	Alcoholic Beverage. Tobacco and Kola	Clothing and Footwear	Housing Water, Electricity. Gas and Other Fuel	Furnishings & Household Equipment Maintenance.	Health.	Transport	Communication	Recreation & Culture.	Education	Restaurant & Hotels	Miscellaneous Goods & Services	Month-on (%)	Year-on (%)	12-month average (%)
Weights**		1000	513.1	428.1	132.5	507.06	518	10.87	76.5	167.3	50.26	30	65.1	6.8	6.91	39.44	12.1	16.6			
Please note that the above weights are only expenditure weights which are still adjusted by population across 37 states. They should not be taken as the final weights in the computation of the CPI																					
	Oct	99.4	98.9	99.1		99.9	99.9	99.7	99.6	99.5	99.1	102.3	96.0	100.4	97.5	97.7	99.0	99.7	0.5	11.6	12.8
	Nov	100.0	100.0	100.0	100.0	100.0	100.0	100.0	100.0	100.0	100.0	100.0	100.0	100.0	100.0	100.0	100.0	100.0	0.7	12.4	12.6
	Dec	102.2	101.5	101.9	101.5	102.4	102.7	101.9	101.5	100.2	101.7	101.8	101.8	100.0	101.9	101.5	102.6	101.7	2.2	13.9	12.5
2010	Jan	103.1	102.1	102.6	101.7	103.7	103.9	102.3	102.4	100.6	103.0	103.0	103.0	99.6	103.0	103.1	106.7	103.3	1.0	14.4	12.6
	Feb	105.0	104.5	105.0	103.2	104.8	105.4	102.6	103.4	102.3	104.7	104.9	104.7	100.3	99.4	106.0	106.3	105.9	1.9	15.6	12.7
	Mar	104.9	104.1	104.6	103.0	105.3	105.3	104.3	104.5	102.2	105.7	105.3	104.8	100.6	103.3	105.5	105.6	104.4	-0.1	14.8	12.8
	Apr	105.7	104.4	105.1	103.9	106.6	106.7	104.8	105.1	102.2	103.8	104.9	106.8	100.4	103.1	105.6	109.7	106.2	0.8	15.0	12.9
	May	105.7	105.2	106.5	104.9	105.7	106.2	103.8	105.9	102.1	102.6	104.8	106.3	100.2	103.3	108.6	110.1	107.2	0.04	12.9	12.9
	Jun	108.8	107.4	108.6	109.6	110.0	110.2	108.5	109.1	104.8	110.7	108.5	107.4	102.1	102.6	106.6	106.9	109.6	2.91	14.1	13.1
	Jul	109.9	107.7	108.8	109.3	111.6	112.0	109.6	110.3	105.1	109.0	110.3	107.5	102.6	103.0	105.7	105.0	110.7	1.08	13.0	13.3
	Aug	111.9	109.3	110.4	109.3	113.8	114.1	112.3	112.8	106.2	110.3	112.3	108.6	100.6	105.0	106.0	107.3	111.2	1.76	13.7	13.5
	Sep	112.4	110.7	111.7	113.6	114.0	113.5	109.0	112.4	109.9	112.1	112.0	112.2	101.8	108.4	108.4	107.1	111.7	0.46	13.6	13.8
	Oct	112.7	111.9	112.0	114.1	114.0	114.1	111.7	112.8	111.0	113.2	114.8	107.1	102.9	109.6	110.1	108.5	110.6	0.30	13.4	13.9
	Nov	112.8	111.7	111.3	115.1	114.4	114.3	112.2	112.0	112.6	113.1	111.1	111.7	102.0	107.8	107.7	108.2	112.8	0.04	12.8	13.9
	Dec	114.2	112.6	112.5	115.4	115.4	115.5	111.9	113.7	113.2	113.2	112.7	112.9	102.4	107.8	109.1	109.6	112.1	1.29	11.8	13.7
2011	Jan	115.6	114.5	113.0	96.0	114.3	118.7	110.6	114.4	113.9	113.5	111.3	109.2	103.6	108.3	110.2	110.5	113.2	1.2	12.1	13.5
	Feb	116.7	115.5	115.5	124.0	117.7	117.9	113.4	116.0	114.7	115.6	114.7	117.2	104.9	106.3	110.6	112.3	114.2	0.96	11.1	13.2
	Mar	118.3	117.5	117.5	119.4	118.1	118.2	112.7	116.5	116.0	115.9	117.5	115.5	105.1	107.4	111.0	112.2	112.8	1.37	12.8	13.0
	Apr	117.7	117.9	117.9	119.1	119.0	118.0	114.5	116.2	121.0	115.4	117.2	114.8	105.1	107.1	111.4	113.3	114.7	0.54	11.3	12.7
	May	118.7	118.9	119.0	120.6	118.5	118.5	115.1	118.2	121.2	116.6	116.6	115.7	105.7	107.4	111.9	113.8	115.6	0.91	12.4	12.6

Table 2 Composite Consumer Price Index (Base November 2009 = 100)

		All Items	All Items less Farm Produce.	All Items less Farm Produce. and Energy	Imported Food	Food	Food & Non Alcoholic Bev.	Alcoholic Beverage. Tobacco and Kola	Clothing and Footwear	Housing Water, Electricity. Gas and Other Fuel	Furnishings & Household Equipment Maintenance.	Health.	Transport	Communication	Recreation & Culture.	Education	Restaurant & Hotels	Miscellaneous Goods & Services	Month-on (%)	Year-on (%)	12-month average (%)
Weights**		1000	513.1	428.1	132.5	507.06	518	10.87	76.5	167.3	50.26	30	65.1	6.8	6.91	39.44	12.1	16.6			
Please note that the above weights are only expenditure weights which are still adjusted by population across 37 states. They should not be taken as the final weights in the computation of the CPI																					
	Jun	119.9	119.8	119.8	111.9	120.1	119.5	114.2	118.0	121.6	116.3	119.9	118.5	105.6	107.9	112.2	114.3	117.9	0.97	10.2	12.3
	Jul	120.3	120.1	119.9	112.6	120.4	120.2	112.4	117.7	122.5	117.6	118.3	120.7	106.2	111.1	112.6	115.0	119.8	0.32	9.4	12.0
	Aug	122.3	121.2	121.1	116.0	123.7	123.4	116.4	118.7	124.5	120.0	120.4	121.9	106.4	109.5	112.9	115.1	121.5	1.67	9.3	11.6
	Sep	124.0	123.5	122.7	117.6	124.8	124.2	116.2	119.9	126.1	119.2	122.3	122.3	106.2	109.8	113.8	115.7	121.6	1.41	10.3	11.4
	Oct	124.6	124.8	124.0	117.0	125.0	124.3	117.6	120.6	128.5	119.5	121.8	122.2	106.6	117.0	114.0	116.6	122.0	0.49	10.5	11.1
	Nov	124.7	124.6	123.5	124.2	125.4	125.1	118.9	121.9	128.1	120.2	122.7	123.3	107.1	115.7	114.2	116.9	125.5	0.04	10.5	11.0
	Dec	126.0	124.8	123.6	125.3	128.1	127.8	119.0	122.3	131.9	119.9	122.8	128.7	106.5	113.3	114.6	118.9	122.7	1.06	10.3	10.8
2012	Jan	130.2	129.1	129.2	121.6	129.3	130.8	123.2	121.1	131.8	120.6	122.7	127.8	108.7	114.5	115.0	120.0	125.9	3.35	12.6	10.9
	Feb	130.5	129.3	129.4	121.6	129.1	129.1	123.2	121.1	131.8	120.6	122.7	127.9	108.7	114.5	115.1	120.0	125.9	0.28	11.9	11.0
	Mar	132.6	135.1	134.5	129.9	132.1	131.9	120.6	133.7	139.7	130.2	129.7	134.4	113.4	116.7	125.6	121.4	131.6	1.59	12.1	10.9
	Apr	132.8	135.2	134.7	131.3	132.3	132.1	121.3	134.1	139.5	130.7	130.1	134.6	114.0	117.6	125.0	121.9	132.0	0.13	12.9	11.1
	May	133.8	136.7	136.3	132.5	133.9	133.7	122.0	134.7	139.7	131.1	130.8	135.1	114.4	118.4	125.5	122.6	132.6	0.75	12.7	11.1
	Jun	135.3	138.0	136.2	132.6	134.5	134.3	122.5	134.8	146.5	131.3	131.1	135.5	114.8	118.5	125.7	123.1	132.9	1.15	12.9	11.3
	Jul	135.7	138.1	136.5	132.9	135.0	134.7	122.8	134.9	146.7	131.3	131.3	135.8	114.9	118.9	125.9	123.4	133.1	0.24	12.8	11.6
	Aug	136.6	139.0	137.1	134.2*	135.9	135.7	123.3	135.6	147.8	132.0	132.0*	136.6	115.2	119.4	126.4	124.4	133.7	0.67	11.7	11.8
	Sep	138.0	139.7	137.7	134.2	137.5	137.2	123.8	136.5	150.1	132.9	132.4	137.3	115.6	120.6	126.7	125.0	134.4	1.01	11.3	11.9
	Oct	139.2	140.3	138.1	135.3	138.8	136.6	124.5	137.5	151.5	133.5	133.1	138.5	116.6	121.4	128.1	125.4	135.3	0.88	11.7	11.9
	Nov	140.0	140.9	138.7	136.2	139.8	139.6	125.3	138.2	152.3	134.1	133.5	138.9	116.2	121.8	128.8	125.7	135.6	0.60	12.3	12.1
	Dec	141.1	141.8	139.6	137.6	141.2	140.9	126.1	139.1	153.2	134.4	133.9	140.2	116.3	122.1	129.1	126.1	136.0	0.75	12.0	12.2

NB: \*indicates class indices revised due to rounding errors

### 3. Inflation -Composite All Items (%)





**Table 3 Urban Consumer Price Index (Base November 2009 = 100)**

		All Items	All Items less Farm Produce.	All Items less Farm Produce. and Energy	Imported Food	Food	Food & Non Alcoholic Bev.	Alcoholic Beverage. Tobacco and Kola	Clothing and Footwear	Housing Water, Electricity. Gas and Other Fuel	Furnishings & Household Equipment Maintenance.	Health.	Transport	Communication	Recreation & Culture.	Education	Restaurant & Hotels	Miscellaneous Goods & Services	Month-on (%)	Year-on (%)	12-month average (%)
Weights		1000	575.22	440.93	155.13	476.82	490.59	11.19	65.5	191.51	49.74	27.4	74.54	10.14	7.2	40.05	14.49	17.65			
Please note that the above weights are only expenditure weights which are still adjusted by population across 37 states. They should not be taken as the final weights in the computation of the CPI																					
2007	Jan	74.5	80.3	78.2		71.6	71.6	97.4	89.1	75.8	78.1	86.6	89.8	99.1	96.3	74.5	78.1	77.7	-0.1	11.9	11.0
	Feb	75.3	80.3	78.8		73.0	73.0	97.8	90.2	75.2	78.0	85.0	89.5	98.3	93.2	77.3	77.9	75.2	1.1	9.2	10.5
	Mar	77.6	82.5	81.5		75.1	75.1	95.5	90.2	80.6	79.9	84.0	84.9	98.9	91.2	73.5	74.7	92.0	3.1	11.2	10.3
	Apr	78.2	82.5	81.5		75.9	75.8	96.6	90.2	80.8	81.3	81.4	84.2	99.1	92.5	80.4	76.6	92.3	0.7	11.2	10.1
	May	79.2	86.0	84.2		75.4	75.4	98.6	84.9	85.6	82.3	75.7	94.4	99.1	92.0	79.7	71.5	87.3	1.3	12.4	10.3
	Jun	79.9	85.7	83.1		76.4	76.4	98.0	84.4	84.1	84.2	80.6	93.1	99.1	96.4	79.4	83.5	81.8	0.8	12.0	10.6
2008	Jan	84.0	89.9	90.5		80.8	80.9	101.8	91.7	87.8	89.7	91.1	92.8	101.4	98.8	89.4	91.8	87.7	0.9	12.7	10.7
	Feb	85.2	90.9	91.3		82.1	82.2	102.6	93.0	89.2	90.1	92.0	92.5	101.5	99.6	86.7	91.9	88.6	1.4	13.1	11.1
	Mar	85.4	91.2	91.7		82.3	82.4	103.5	92.3	88.8	90.2	94.4	92.1	101.5	99.0	85.6	96.9	89.4	0.2	10.1	11.0
	Apr	86.9	92.5	93.2		83.9	84.0	105.7	93.4	90.1	91.4	97.5	92.5	101.5	100.7	85.2	97.4	90.7	1.7	11.1	11.0
	May	87.3	92.8	92.5		84.6	84.6	104.8	94.0	90.4	92.1	97.5	91.5	101.5	101.3	84.5	96.5	90.4	0.6	10.3	10.8
	Jun	89.1	94.7	95.3		86.2	86.2	103.7	95.1	93.2	95.9	96.2	91.2	99.1	98.9	84.7	98.8	91.4	2.0	11.5	10.8
	Jul	90.4	96.6	97.6		87.3	87.3	105.4	97.7	95.6	96.5	96.6	91.5	99.3	99.3	84.7	99.7	93.0	1.5	12.9	11.0
	Aug	91.9	98.2	99.0		88.5	88.6	104.5	97.7	98.1	96.8	95.7	92.3	99.3	98.6	86.5	101.6	92.2	1.6	12.1	11.1
	Sep	92.3	97.9	97.7		89.2	89.2	101.6	97.3	98.7	95.9	94.2	91.8	100.7	97.1	86.6	100.7	92.7	0.5	13.5	11.5
	Oct	92.1	97.8	98.2		88.9	89.0	98.3	97.2	98.2	97.8	94.7	92.0	99.8	97.9	88.4	102.3	92.1	-0.2	13.8	11.9
	Nov	91.9	96.8	97.3		89.3	89.3	97.9	96.6	96.4	96.8	94.6	92.1	99.4	98.5	89.0	102.6	92.4	-0.2	12.0	12.1
	Dec	92.8	97.8	97.9		89.6	89.7	97.5	98.5	98.8	96.2	95.9	93.9	99.3	98.6	90.9	102.7	93.7	0.9	11.4	12.0
2009	Jan	92.8	96.6	97.8		90.5	90.5	97.6	97.8	96.4	96.3	96.3	94.0	99.3	97.8	92.3	102.0	96.0	0.0	10.4	11.8
	Feb	93.6	96.3	97.6		92.0	92.0	98.6	98.2	95.5	96.2	98.1	93.0	99.3	97.8	90.9	103.2	95.2	0.8	9.8	11.6

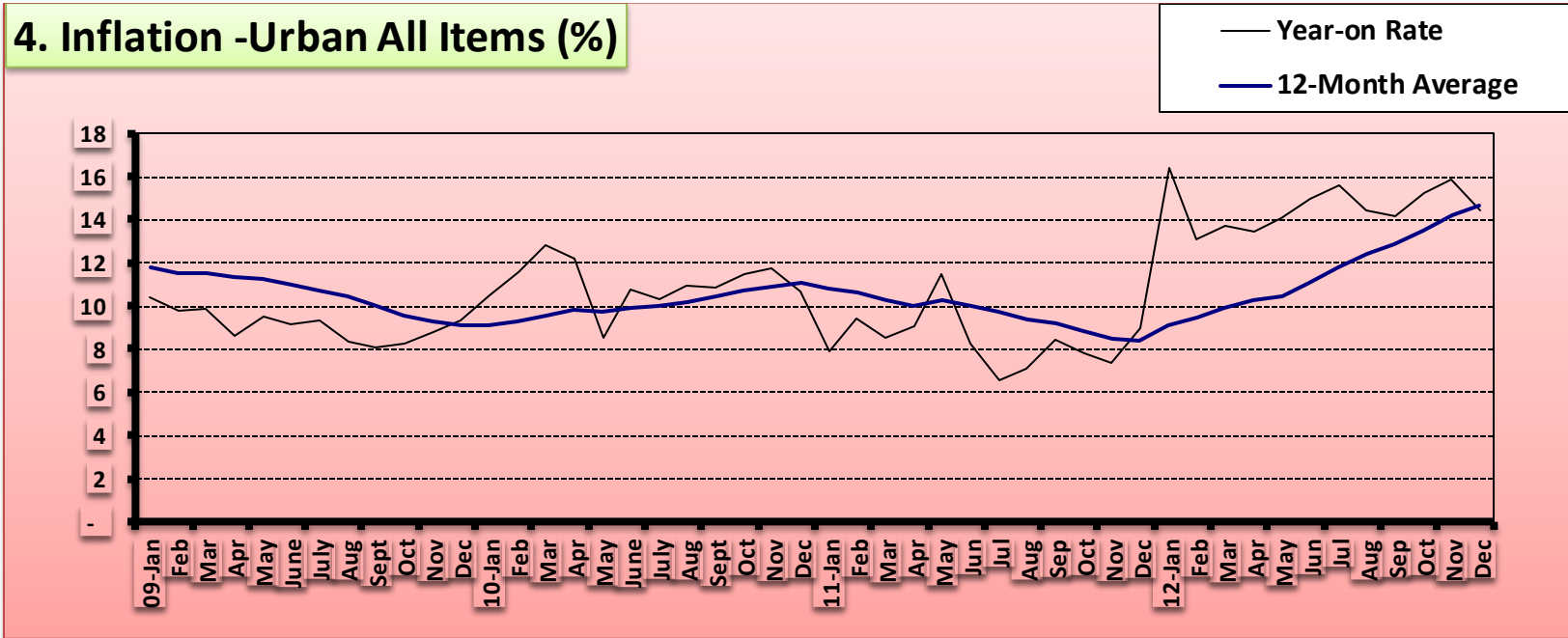
**Table 3 Urban Consumer Price Index (Base November 2009 = 100)**

		All Items	All Items less Farm Produce.	All Items less Farm Produce. and Energy	Imported Food	Food	Food & Non Alcoholic Bev.	Alcoholic Beverage. Tobacco and Kola	Clothing and Footwear	Housing Water, Electricity. Gas and Other Fuel	Furnishings & Household Equipment Maintenance.	Health.	Transport	Communication	Recreation & Culture.	Education	Restaurant & Hotels	Miscellaneous Goods & Services	Month-on (%)	Year-on (%)	12-month average (%)
Weights		1000	575.22	440.93	155.13	476.82	490.59	11.19	65.5	191.51	49.74	27.4	74.54	10.14	7.2	40.05	14.49	17.65			
Please note that the above weights are only expenditure weights which are still adjusted by population across 37 states. They should not be taken as the final weights in the computation of the CPI																					
	Mar	93.9	96.5	98.0		92.4	92.4	98.8	97.9	95.5	96.5	98.3	94.1	99.3	96.7	93.0	104.1	95.1	0.4	9.9	11.5
	Apr	94.3	97.4	98.8		92.5	92.6	99.9	98.6	96.4	98.0	99.6	95.7	99.3	97.8	89.7	104.4	95.6	0.5	8.6	11.3
	May	95.7	98.2	98.7		94.1	94.1	100.1	96.9	98.1	96.2	97.9	97.1	99.3	98.9	96.3	104.2	98.2	1.4	9.5	11.2
	June	97.2	98.8	99.7		96.3	96.3	100.6	97.0	98.5	97.4	99.3	96.7	99.3	99.9	96.7	106.2	98.1	1.6	9.2	11.0
	July	98.9	99.5	100.3		98.4	98.4	102.1	99.9	100.2	98.8	100.9	95.7	100.8	100.1	97.6	100.1	98.5	1.7	9.3	10.7
	Aug	99.6	99.7	99.4		99.3	99.3	100.7	99.9	100.6	99.7	100.3	95.1	102.1	101.2	97.4	105.2	99.9	0.7	8.4	10.4
	Sep	99.8	99.5	99.2		99.8	99.8	99.8	99.7	100.3	101.1	98.8	96.0	101.5	100.5	99.5	99.7	100.8	0.2	8.1	10.0
	Oct	99.8	99.9	99.3		99.6	99.6	99.8	100.3	100.8	100.9	99.9	96.8	100.9	100.1	98.9	98.0	100.7	0.0	8.3	9.5
	Nov	100.0	100.0	100.0	100.0	100.0	100.0	100.0	100.0	100.0	100.0	100.0	100.0	100.0	100.0	100.0	100.0	100.0	0.2	8.8	9.3
	Dec	101.4	101.3	101.8	100.5	101.6	101.7	99.9	100.9	101.4	100.8	101.6	102.0	99.2	104.2	100.7	103.2	101.6	1.4	9.3	9.1
2010	Jan	102.6	102.5	102.7	101.1	102.8	102.8	100.7	103.1	102.6	101.9	102.4	103.5	99.7	105.8	102.5	108.3	102.8	1.2	10.5	9.1
	Feb	104.4	105.4	105.4	103.1	102.9	103.6	101.6	103.6	104.4	103.6	105.4	103.9	100.1	99.4	108.0	106.7	106.3	1.8	11.6	9.3
	Mar	106.0	105.7	105.9	103.5	106.1	105.9	103.8	105.9	104.8	106.1	106.8	108.1	100.9	107.1	106.8	107.5	106.1	1.5	12.9	9.6
	Apr	105.9	105.4	105.6	103.4	106.3	106.1	103.9	106.0	103.9	105.5	106.9	106.7	100.8	108.3	106.6	111.5	107.0	-0.1	12.2	9.9
	May	103.8	103.7	104.9	104.5	103.8	104.7	102.0	104.7	99.2	103.0	104.1	105.9	101.2	105.0	105.7	109.3	104.8	-1.9	8.5	9.8
	Jun	107.7	107.0	108.0	110.0	108.5	108.6	106.8	108.7	105.2	108.7	107.9	106.2	103.4	104.0	106.8	108.6	109.3	3.7	10.8	9.9
	Jul	109.1	107.9	108.4	109.1	110.4	110.6	109.2	110.4	103.9	108.4	111.6	109.3	104.0	102.8	106.7	106.4	110.6	1.3	10.3	10.0
	Aug	110.5	109.0	109.9	111.0	112.8	112.9	110.0	112.1	103.0	110.7	113.0	110.0	100.9	106.4	108.1	111.6	111.7	1.3	10.9	10.2
	Sep	110.6	109.4	110.5	113.0	112.6	112.4	106.6	112.4	106.0	110.5	110.0	112.2	101.4	110.1	107.6	107.3	109.2	0.1	10.9	10.4
	Oct	111.2	110.0	110.1	114.3	113.5	113.5	109.6	111.6	110.7	109.4	110.8	105.8	101.4	109.0	108.4	106.0	110.8	0.5	11.5	10.7
	Nov	111.7	111.3	111.1	113.4	112.8	112.8	110.0	112.2	111.0	111.1	111.8	110.4	101.1	109.7	107.9	107.8	113.1	0.5	11.7	10.9
	Dec	112.2	111.2	111.0	113.5	113.4	113.4	109.7	113.8	111.8	111.5	112.9	111.7	100.8	109.2	109.3	111.3	112.7	0.4	10.7	11.0
2011	Jan	110.7	108.5	106.0	67.2	111.7	116.5	107.8	114.9	110.8	112.4	111.6	108.3	105.8	108.1	111.2	113.2	111.6	-1.4	7.9	10.8
	Feb	114.2	114.1	114.4	117.6	115.5	115.2	110.2	115.1	115.5	114.4	118.6	111.6	101.9	103.7	111.7	114.9	114.6	3.2	9.4	10.6
	Mar	115.0	114.9	114.2	118.0	116.0	116.3	109.8	115.7	118.2	115.1	120.5	111.9	101.8	105.1	111.6	115.9	113.8	0.7	8.5	10.3
	Apr	115.5	116.3	116.1	114.9	116.4	115.5	112.3	116.3	116.1	114.8	117.8	112.2	102.5	106.1	111.6	115.1	115.5	0.5	9.1	10.0

**Table 3 Urban Consumer Price Index (Base November 2009 = 100)**

		All Items	All Items less Farm Produce.	All Items less Farm Produce. and Energy	Imported Food	Food	Food & Non Alcoholic Bev.	Alcoholic Beverage. Tobacco and Kola	Clothing and Footwear	Housing Water, Electricity. Gas and Other Fuel	Furnishings & Household Equipment Maintenance.	Health.	Transport	Communication	Recreation & Culture.	Education	Restaurant & Hotels	Miscellaneous Goods & Services	Month-on (%)	Year-on (%)	12-month average (%)
Weights		1000	575.22	440.93	155.13	476.82	490.59	11.19	65.5	191.51	49.74	27.4	74.54	10.14	7.2	40.05	14.49	17.65			
Please note that the above weights are only expenditure weights which are still adjusted by population across 37 states. They should not be taken as the final weights in the computation of the CPI																					
	May	115.8	116.8	116.7	116.0	116.7	116.2	112.9	117.2	116.0	116.4	120.1	116.2	102.8	105.6	111.7	115.9	114.7	0.2	11.5	10.2
	Jun	116.6	116.6	116.3	112.4	118.0	117.2	112.1	117.2	116.3	115.4	121.1	116.5	102.0	106.5	111.7	116.8	114.7	0.7	8.3	10.0
	Jul	116.3	116.8	115.6	111.8	118.0	117.6	112.2	117.4	118.3	116.7	118.8	119.0	103.4	104.9	112.5	117.3	115.8	-0.3	6.6	9.7
	Aug	118.3	118.7	117.8	113.4	119.9	119.1	113.8	117.9	119.9	119.7	121.1	122.1	103.4	107.9	112.6	116.1	116.9	1.7	7.1	9.4
	Sep	120.0	121.3	119.6	115.5	120.7	119.8	114.1	118.4	124.8	120.2	123.6	121.3	103.7	108.2	113.2	117.7	117.2	1.4	8.4	9.2
	Oct	119.9	121.2	119.1	115.5	120.9	120.0	114.6	119.1	125.6	120.3	121.7	121.3	104.3	111.1	113.2	118.8	116.7	-0.1	7.8	8.9
	Nov	120.0	121.1	118.9	119.0	120.8	119.7	115.5	120.9	125.1	119.7	123.3	122.8	105.0	108.6	113.7	119.0	120.5	0.1	7.4	8.5
	Dec	122.3	122.0	119.6	121.1	124.5	123.8	115.2	120.2	128.0	119.2	122.1	128.2	104.6	107.9	114.6	121.1	117.4	2.0	9.0	8.4
2012	Jan	128.9	128.2	127.4	113.4	125.5	127.1	119.3	119.7	135.4	120.6	123.3	127.4	105.9	108.9	114.9	123.4	119.9	5.3	16.4	9.1
	Feb	129.2	128.4	127.5	113.5	126.3	126.2	119.3	119.7	135.5	120.6	123.3	127.5	105.9	108.9	114.9	123.4	119.9	0.3	13.1	9.4
	Mar	130.7	132.6	132.1	129.5	129.1	128.9	113.2	135.2	136.9	127.4	129.0	137.6	110.6	115.1	124.2	122.9	131.4	1.2	13.7	9.9
	Apr	131.1	133.0	132.6	130.7	129.4	129.2	114.6	136.3	136.9	128.1	129.4	137.6	111.1	116.4	124.4	123.1	132.3	0.3	13.4	10.3
	May	132.1	134.0	133.6	132.1	131.1	130.9	115.5	136.8	137.2	128.4	130.1	138.2	111.7	117.8	125.3	123.5	133.0	0.8	14.1	10.5
	Jun	134.1	135.8	134.0	132.1	131.4	131.3	116.1	137.0	146.5	128.3	130.4	138.3	112.1	117.6	125.5	123.7	133.4	1.5	15.0	11.1
	Jul	134.5	135.5	133.6	132.4	131.7	131.6	116.4	137.0	146.9	128.5	130.8	138.7	112.2	118.4	125.9	124.2	133.6	0.2	15.6	11.8
	Aug	135.4	136.7	134.3	133.8*	132.5	132.4*	117.0	137.9	148.3	129.5	131.5	139.6	112.6	119.3	126.1	126.0	134.8	0.7	14.5*	12.4
	Sep	137.0	137.7	135.4	133.9	134.2	134.0	117.3	138.9	151.1	130.3	132.3	140.4	113.3	121.0	126.6	126.2	136.1	1.2	14.2	12.9
	Oct	138.2	138.3	135.6	134.5	135.3	135.1	117.6	139.7	152.9	131.2	133.0	141.5	113.6	121.9	127.9	126.8	136.9	0.9	15.3	13.5
	Nov	139.0	138.9	136.1	134.5	136.2	136.0	118.1	140.1	154.2	131.8	133.3	142.1	113.7	122.8	128.6	127.2	137.0	0.6	15.8	14.2
	Dec	140.0	139.8	136.9	136.7	137.6	137.3	118.8	141.2	155.1	132.1	133.6	143.1	113.8	122.8	129.0	127.3	137.2	0.8	14.5	14.6

NB: \*indicates class indices revised due to rounding errors



**Table 4 Rural Consumer Price Index (Base November 2009 = 100)**

		All Items	All Items less Farm Produce.	All Items less Farm Produce and Energy	Imported Food	Food	Food & Non Alcoholic Bev.	Alcoholic Beverage, Tobacco and Kola	Clothing and Footwear	Housing Water, Electricity, Gas and Other Fuel	Furnishings & Household Equipment Maintenance.	Health.	Transport	Communication	Recreation & Culture.	Education	Restaurant & Hotels	Miscellaneous Goods & Services	Month-on (%)	Year-on (%)	12-month average (%)
Weights		1000.0	503.1	417.4	113.7	532.3	540.9	10.6	85.7	147.2	50.7	32.2	57.2	4.0	6.7	38.9	10.1	15.8			
2008	Jan	76.7	81.7	78.1		73.7	74.0	90.3	80.5	80.6	71.2	77.5	76.0	67.7	82.8	61.8	68.3	77.4	1.7	6.5	2.9
	Feb	76.4	83.0	81.8		72.7	73.0	87.2	79.5	80.3	71.3	75.8	81.4	67.3	79.5	64.7	70.7	76.1	-0.3	5.5	2.9
	Mar	77.2	78.0	75.4		76.8	77.1	91.4	77.3	76.4	74.5	78.8	71.5	65.4	81.8	64.5	69.8	70.8	1.1	6.6	3.2
	Apr	78.4	79.2	78.0		77.9	78.2	87.8	85.0	77.2	75.5	82.4	82.0	87.6	80.2	62.6	74.4	71.8	1.5	6.7	3.7
	May	80.4	82.3	81.0		79.5	79.7	93.4	87.2	79.6	78.5	84.5	81.9	94.3	81.6	65.7	89.3	82.9	2.6	9.4	4.4
	Jun	84.1	84.6	85.0		83.9	84.1	94.0	90.2	82.4	80.4	87.6	83.4	94.3	82.6	72.4	91.8	82.1	4.6	12.3	5.1
	Jul	86.2	85.9	82.7		86.5	86.6	93.8	90.4	84.8	82.4	90.8	86.6	95.6	85.8	77.2	91.2	88.9	2.5	14.5	6.2
	Aug	87.0	86.1	84.7		87.4	87.5	95.1	93.5	85.5	81.7	89.6	82.5	95.6	88.7	81.0	95.6	84.4	1.0	12.5	7.1
	Sep	88.3	88.2	86.4		88.2	88.3	96.2	93.6	88.3	82.1	90.7	82.5	95.2	89.8	79.7	95.0	85.7	1.4	12.8	8.1
	Oct	87.6	87.4	86.7		87.7	87.8	97.2	94.7	87.2	82.0	92.0	83.4	95.2	89.9	81.1	94.9	89.1	-0.8	15.2	9.2
	Nov	87.6	87.3	86.6		87.7	87.7	97.3	95.1	86.5	81.2	93.8	84.3	95.2	91.1	81.0	95.3	89.9	0.0	16.3	10.3
	Dec	88.2	88.1	88.7		88.3	88.3	97.5	95.2	86.8	81.4	96.2	85.8	95.3	90.5	84.4	97.7	92.2	0.7	17.0	11.4
2009	Jan	88.9	88.5	90.0		89.1	89.1	97.5	96.2	87.1	81.7	97.9	86.6	95.2	91.2	84.5	97.8	92.1	0.8	15.9	12.1
	Feb	89.5	89.5	90.2		89.6	89.6	98.3	95.7	89.0	81.9	99.0	85.6	95.2	89.7	85.4	98.8	93.1	0.7	17.2	13.1
	Mar	90.2	89.8	90.8		90.5	90.5	98.0	96.1	88.8	82.5	99.6	85.7	95.2	90.2	87.0	97.9	94.7	0.7	16.7	13.9
	Apr	90.7	90.2	91.7		91.3	91.3	98.0	96.2	88.5	84.4	102.4	92.0	95.2	90.8	88.9	99.5	95.3	0.6	15.7	14.6
	May	92.6	92.3	93.8		93.3	93.3	98.8	96.5	89.7	84.2	100.2	94.0	95.2	91.9	88.4	98.0	91.3	2.1	15.1	15.1
	June	94.4	93.7	95.1		95.4	95.3	98.6	97.1	93.4	84.8	100.8	89.6	95.2	92.1	88.6	98.2	97.5	1.9	12.2	15.1
	July	96.5	95.5	97.5		97.7	97.7	100.4	95.7	95.9	99.6	102.5	87.2	98.3	94.7	90.4	98.3	99.0	2.3	12.0	14.8

**Table 4 Rural Consumer Price Index (Base November 2009 = 100)**

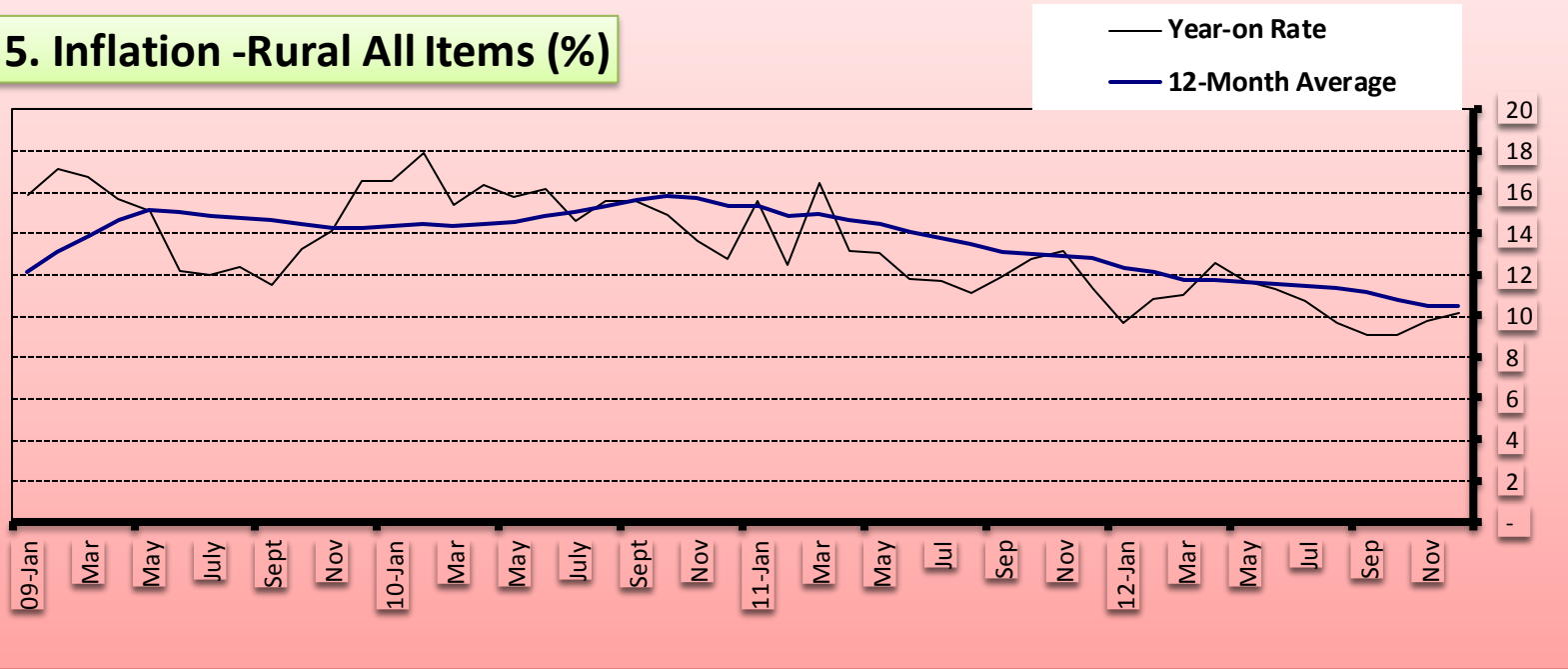
		All Items	All Items less Farm Produce.	All Items less Farm Produce. and Energy	Imported Food	Food	Food & Non Alcoholic Bev.	Alcoholic Beverage. Tobacco and Kola	Clothing and Footwear	Housing Water, Electricity, Gas and Other Fuel	Furnishings & Household Equipment Maintenance.	Health.	Transport	Communication	Recreation & Culture.	Education	Restaurant & Hotels	Miscellaneous Goods & Services	Month-on (%)	Year-on (%)	12-month average (%)
Weights		1000.0	503.1	417.4	113.7	532.3	540.9	10.6	85.7	147.2	50.7	32.2	57.2	4.0	6.7	38.9	10.1	15.8			
	Aug	97.8	96.1	96.9		98.8	98.7	99.6	98.3	95.6	100.6	103.0	89.9	100.9	96.2	101.3	98.9	100.1	1.3	12.4	14.8
	Sep	98.5	97.4	98.2		99.4	99.3	98.6	98.4	96.8	97.2	103.9	93.2	100.9	95.8	99.8	100.1	99.6	0.7	11.5	14.7
	Oct	99.2	98.4	99.0		100.0	100.0	99.5	98.9	97.9	98.0	104.4	94.6	100.0	96.0	96.6	99.6	98.9	0.7	13.2	14.5
	Nov	100.0	100.0	100.0	100.0	100.0	100.0	100.0	100.0	100.0	100.0	100.0	100.0	100.0	100.0	100.0	100.0	100.0	0.8	14.2	14.3
	Dec	102.8	101.7	102.1	102.3	103.1	103.5	103.5	102.0	99.2	102.4	102.0	101.6	100.6	99.9	102.1	102.0	101.9	2.8	16.6	14.3
2010	Jan	103.6	101.9	102.4	102.2	104.4	104.9	103.6	101.8	98.9	103.9	103.5	102.7	99.5	100.7	103.6	105.5	103.7	0.8	16.5	14.4
	Feb	105.6	103.8	104.7	103.3	106.4	106.9	103.5	103.3	100.6	105.5	104.5	105.3	100.5	99.5	104.3	106.0	105.6	1.9	17.9	14.5
	Mar	104.0	102.8	103.5	102.6	104.6	104.9	104.7	103.3	100.0	105.3	104.0	102.1	100.4	100.1	104.4	104.0	103.0	-1.5	15.3	14.4
	Apr	105.6	103.6	104.7	106.6	106.8	107.2	105.6	104.3	100.8	102.3	103.3	106.8	100.0	98.7	104.7	108.2	105.5	1.5	16.4	14.5
	May	107.2	106.5	107.9	105.4	107.2	107.5	105.3	106.8	104.6	102.3	105.4	106.6	99.4	101.8	111.0	110.7	109.1	1.6	15.8	14.5
	Jun	109.6	107.8	109.2	109.2	111.2	111.5	109.9	109.4	104.4	112.4	108.9	108.4	101.0	101.5	106.4	105.4	109.9	2.2	16.1	14.9
	Jul	110.7	107.6	109.2	109.5	112.6	113.2	109.9	110.2	106.2	109.6	109.2	105.9	101.4	103.1	104.9	103.9	110.7	0.9	14.6	15.1
	Aug	113.0	109.6	110.8	111.4	114.7	115.2	114.2	113.4	108.9	109.9	111.8	107.4	100.4	103.9	104.3	103.7	110.7	2.1	15.6	15.3
	Sep	113.8	111.7	112.7	114.1	115.1	114.5	110.9	112.4	113.1	113.5	113.6	112.2	102.2	106.9	109.0	107.0	113.8	0.7	15.6	15.7
	Oct	114.0	113.5	113.6	113.9	114.4	114.5	113.5	113.9	111.2	116.4	118.1	108.1	104.1	110.0	111.5	110.6	110.5	0.1	15.0	15.8
	Nov	113.6	112.1	111.5	116.5	115.7	115.4	114.0	111.8	113.9	114.8	110.5	112.8	102.7	106.2	107.5	108.5	112.6	-0.3	13.6	15.7
	Dec	115.9	113.8	113.7	117.0	117.1	117.2	113.7	113.6	114.3	114.7	112.6	114.0	103.6	106.6	109.0	108.2	111.5	2.0	12.7	15.4
2011	Jan	119.7	119.5	118.9	120.1	116.5	120.5	113.0	114.0	116.4	114.5	111.1	110.0	101.8	108.5	109.4	108.2	114.5	3.3	15.6	15.3
	Feb	118.8	116.7	116.4	129.4	119.4	120.2	116.1	116.8	114.1	116.6	111.4	121.9	107.4	108.4	109.7	110.1	113.8	-0.8	12.5	14.9
	Mar	121.1	119.6	120.2	120.6	119.9	119.8	115.2	117.3	114.2	116.6	115.0	118.4	107.8	109.2	110.6	109.1	111.9	1.9	16.4	15.0
	Apr	119.4	119.2	119.4	122.6	121.1	120.10	116.4	116.1	125.1	116.0	116.7	116.9	107.2	107.8	111.2	111.9	114.1	-1.3	13.1	14.7
	May	121.2	120.6	120.8	124.4	120.1	120.40	116.9	119.0	125.5	116.7	113.8	115.4	108.1	108.8	112.1	112.0	116.4	1.5	13.0	14.5
	Jun	122.6	122.4	122.8	111.5	121.9	121.49	116.0	118.6	126.0	117.1	118.8	120.1	108.7	109.2	112.6	112.1	120.6	1.1	11.8	14.1
	Jul	123.6	122.8	123.4	113.3	122.4	122.45	112.5	117.9	126.0	118.2	117.9	122.1	108.5	116.2	112.8	113.1	123.2	0.8	11.7	13.8

**Table 4 Rural Consumer Price Index (Base November 2009 = 100)**

		All Items	All Items less Farm Produce.	All Items less Farm Produce. and Energy	Imported Food	Food	Food & Non Alcoholic Bev.	Alcoholic Beverage. Tobacco and Kola	Clothing and Footwear	Housing Water, Electricity. Gas and Other Fuel	Furnishings & Household Equipment Maintenance.	Health.	Transport	Communication	Recreation & Culture.	Education	Restaurant & Hotels	Miscellaneous Goods & Services	Month-on (%)	Year-on (%)	12-month average (%)
Weights		1000.0	503.1	417.4	113.7	532.3	540.9	10.6	85.7	147.2	50.7	32.2	57.2	4.0	6.7	38.9	10.1	15.8			
	Aug	125.6	123.3	123.8	118.1	126.9	127.0	118.6	119.4	128.4	120.1	119.9	121.8	108.8	110.9	113.2	114.2	125.4	1.6	11.1	13.5
	Sep	127.4	125.3	125.3	119.4	128.2	128.0	118.0	121.2	127.2	118.4	121.3	123.1	108.3	111.0	114.2	114.0	125.2	1.4	11.9	13.2
	Oct	128.6	127.8	128.0	118.1	128.4	127.9	120.1	121.8	131.0	118.8	121.8	123.0	108.6	122.1	114.6	114.8	126.4	0.9	12.8	13.0
	Nov	128.6	127.4	127.3	128.6	129.1	129.6	121.8	122.6	130.5	120.7	122.2	123.7	108.9	121.6	114.6	115.1	129.7	0.0	13.1	13.0
	Dec	129.0	127.1	127.0	128.8	131.1	131.1	122.2	124.1	135.1	120.6	123.4	129.2	108.1	117.9	114.6	117.0	127.1	0.3	11.3	12.8
2012	Jan	131.3	129.9	130.7	128.4	132.4	134.0	126.4	122.3	128.7	120.6	122.2	128.2	111.0	119.2	115.2	117.2	130.8	1.8	9.7	12.3
	Feb	131.6	130.0	130.9	128.4	131.8	131.7	126.4	122.3	128.8	120.6	122.2	128.2	111.0	119.2	115.2	117.2	130.8	0.3	10.9	12.2
	Mar	134.4	137.1	136.5	130.3	134.9	134.7	127.4	132.3	142.7	133.2	130.2	130.0	114.6	117.9	126.7	120.2	131.7	2.1	11.0	11.8
	Apr	134.4	137.0	136.5	131.8	135.0	134.8	127.7	132.0	142.3	133.6	130.7	130.3	115.1	118.3	125.5	121.0	131.8	0.01	12.5	11.7
	May	135.4	138.9	138.5	132.9	136.5	136.3	128.1	132.6	142.6	133.9	131.3	130.7	115.3	118.8	125.7	121.9	132.2	0.74	11.7	11.6
	Jun	136.5	139.8	138.1	133.0	137.4	137.2	128.5	132.6	146.3	134.3	131.6	131.3	115.7	119.0	125.9	122.6	132.5	0.83	11.4	11.6
	Jul	136.9	140.4	138.9	133.3	138.0	137.7	129.0	132.9	146.4	134.2	131.6	131.6	115.8	119.1	125.8	122.9	132.7	0.25	10.7	11.5
	Aug	137.8	140.9*	139.4	134.5	139.1	138.9	129.4	133.5	147.2	134.7	132.2*	132.1	116.0	119.3	126.6	123.0	132.8	0.65*	9.7	11.4
	Sep	139.0	141.3	139.6	134.4	140.6	140.3	130.0	134.2	148.9	135.7	132.4	132.9	116.2	120.0	126.8	124.0	132.9	0.89	9.1	11.1
	Oct	140.2	141.9	140.1	136.0	142.0	141.8	131.0	135.5	149.9	136.0	133.0	134.0	116.6	120.7	128.2	124.3	134.0	0.88	9.1	10.8
	Nov	141.1	142.5	141.0	137.7	143.2	142.9	132.0	136.3	150.3	136.7	133.7	134.2	116.8	120.8	129.0	124.5	134.5	0.63	9.8	10.5
	Dec	142.1	143.5	141.9	138.3	144.5	144.2	132.8	137.1	151.1	136.9	134.1	135.7	117.0	121.2	129.1	125.2	135.0	0.73	10.2	10.5

NB: \*indicates class indices adjusted due to rounding errors

### 5. Inflation -Rural All Items (%)





**Table 5 Combined Urban And Rural State Consumer Price Index**

(Base Period: November 2009 = 100)

State	Nov-11		Oct-12		Nov-12	
	Food	All Items	Food	All Items	Food	All Items
Abia	121.6	120.2	138.8	137.4	139.3	138.3
Abuja	128.0	124.4	143.5	141.1	139.3	134.8
Adamawa	120.9	120.7	140.7	139.9	148.2	146.0
Akw a Ibom	127.9	127.2	134.5	138.1	134.3	137.4
Anambra	115.8	113.8	138.4	138.2	136.9	138.0
Bauchi	128.7	131.8	138.2	141.5	138.0	140.9
Bayelsa	123.0	119.1	144.6	144.5	146.3	142.9
Benue	128.4	125.0	138.5	139.3	141.6	141.9
Borno	125.1	135.2	142.5	143.8	139.9	143.7
Cross River	126.1	121.8	142.5	140.5	144.7	137.1
Delta	123.5	123.2	138.9	138.4	134.4	137.6
Ebonyi	133.7	128.2	138.0	137.4	140.2	136.7
Edo	136.0	144.0	140.8	150.3	139.7	151.7
Ekiti	114.9	124.5	144.1	139.9	144.7	140.9
Enugu	120.9	108.5	134.7	133.8	137.8	138.0
Gombe	120.7	123.4	135.9	136.8	139.3	140.2
Imo	136.3	126.5	138.5	133.6	140.0	135.6
Jigawa	124.3	126.5	137.2	139.5	141.1	141.6
Kaduna	123.8	124.0	138.5	140.2	139.4	140.1
Kano	127.9	126.6	137.1	137.6	136.1	134.6
Katsina	127.2	119.0	138.7	132.4	139.9	133.8
Kebbi	123.2	125.0	134.2	135.7	133.6	134.6
Kogi	127.2	131.3	140.7	141.5	136.7	142.7
Kwara	114.2	137.8	129.6	160.0	135.1	164.3
Lagos	123.7	120.9	134.7	140.0	142.0	143.6
Nassarawa	122.4	123.1	139.3	138.3	132.3	135.2
Niger	122.5	125.5	136.0	137.2	132.2	137.6
Ogun	119.3	120.4	134.7	141.1	139.6	144.8
Ondo	129.5	125.0	148.8	145.4	141.3	141.4
Osun	113.6	119.4	135.8	134.6	140.3	135.5
Oyo	120.1	120.8	146.2	144.4	144.3	143.3
Plateau	120.2	123.6	132.3	134.8	133.7	136.8
Rivers	121.7	116.6	140.7	135.4	145.7	139.4
Sokoto	116.4	121.4	129.6	139.4	123.7	136.7
Taraba	112.0	112.4	142.0	138.8	143.7	140.1
Yobe	118.7	119.8	149.2	149.3	151.5	148.1
Zamfara	120.8	119.3	137.8	136.1	139.5	137.3

Note: Indices may not be used for inter-state price comparison because market baskets differ from state to state